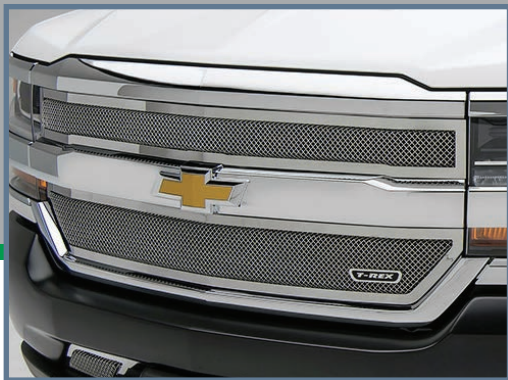


T-REX

GRILLES



UPPER CLASS GRILLE

MAIN GRILLE OVERLAY #54124 / #51124

2016-2017 CHEVROLET SILVERADO 1500

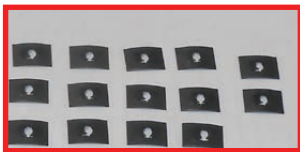
PARTS INCLUDED

(1) X-Metal Grille - 2 Piece - Main Insert / Overlay

Insert / Overlay - Polished - Part #6711240 OR
 Insert / Overlay - Black - Part #6711241

HARDWARE INCLUDED

(14) - #8 Screws
 (14) - #8 Flat Nuts



HARDWARE FOR INSERT



HARDWARE FOR OVERLAY

TOOLS REQUIRED

- Drill
- 1/8" Drill Bit
- Screwdriver set (Phillips)
- Needle Nose Pliers
- Socket Set
- Ratchet Tool
- 1/2" Plastic Spatula

GRILLE REMOVAL & GRILLE INSTALLATION GUIDE

START HERE

PLEASE READ AND UNDERSTAND ALL INSTRUCTIONS BEFORE INSTALLATION. Auto makers offer varied models to each vehicle and occasionally manufacture more than one body style of the same model.

* APPLICATION MODELS VARY. WE RECOMMEND TO VERIFY FITMENT BEFORE BEGINNING INSTALLATION PROCESS.
 * IMAGES FEATURED IN THE INSTRUCTION DOCUMENTS MAY NOT ALWAYS EXACTLY MATCH YOUR GRILL.

STEP 1 FRONT BUMPER REMOVAL

1) Turn off engine and chalk tires with stop block. Open Hood. Disconnect Battery.

PRO TIP:

Before you begin, use "3M Painters Tape" to apply a protective guard around the work areas. Attend to the fender and bumper valance. This will help protect the paint and finish of your vehicle.

STEP 2

This Install Guide covers how to install the Grille as a Overlay.

2) Begin by removing all of the hardware that secures the factory grille to the vehicle core support.

There should be the (3)

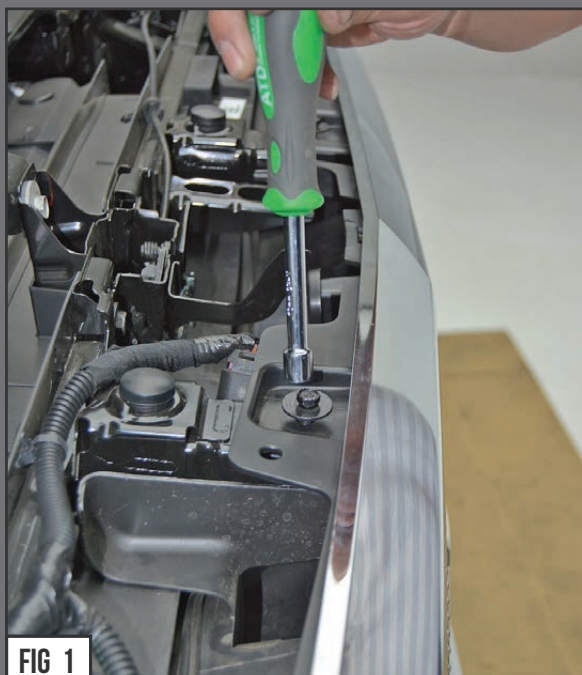


FIG 1

UPPER CLASS GRILLE

GRILLE REMOVAL - CONTINUED

MAIN GRILLE OVERLAY #54124 / #51124

2016-2017 CHEVROLET SILVERADO 1500

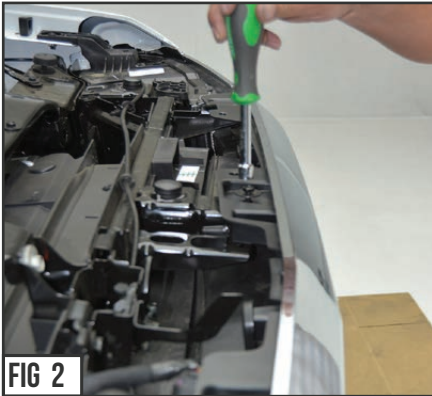


FIG 2

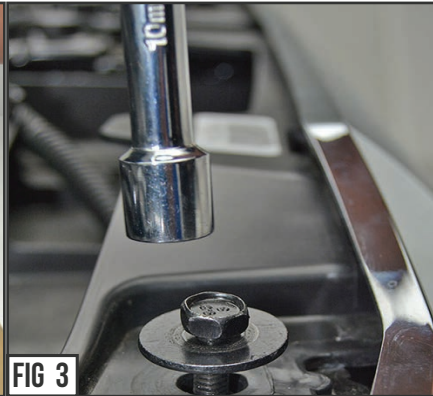


FIG 3



FIG 4



FIG 5

STEP 3

SEE FIGURES 4 & 5

3) With the hardware removed the factory grille overlay is now ready to be un-installed off the vehicle.

Using both hands, grab the very bottom corners of each side and firmly pull on both sides. This action will pull loose the clips at bottom of grill and release the grille from the grille mounts. The Grille should now be free to pull away from truck.

ASSEMBLE YOUR HARDWARE

STEP 4

SEE FIGURES 6

4) Assemble your provided hardware. Mate the Flat Nut Plates to the L Shaped Anchor Bracket.

Note the orientation in Figures 1 & 2.



FIG 6

OVERLAY THE GRILLE

STEP 6

SEE FIGURES 4 & 5

6) With the hardware removed the factory grille overlay is now ready to be un-installed off the vehicle.

Using both hands, grab the very bottom corners of each side and firmly pull on both sides. This action will pull loose the clips at bottom of grill and release the grille from the grille mounts. The Grille should now be free to pull away from truck.

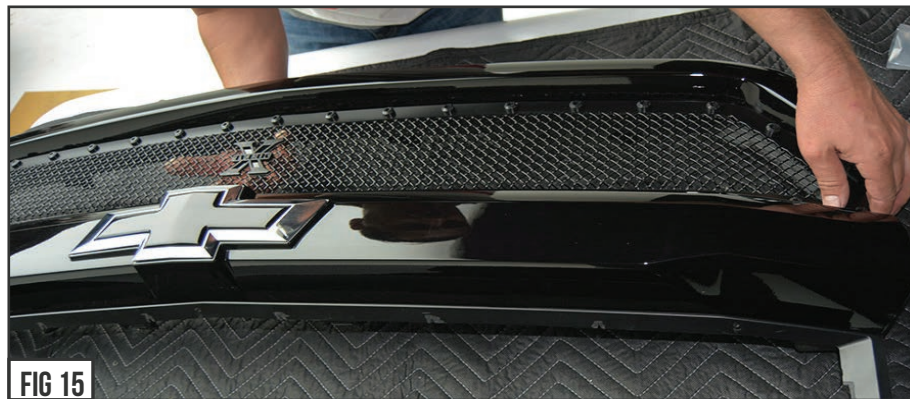
UPPER CLASS GRILLE

GRILLE ASSEMBLY - START

MAIN GRILLE OVERLAY #54124 / #51124
2016-2017 CHEVROLET SILVERADO 1500



ASSEMBLE THE HARDWARE TO GRILLE



STEP 6

6) Flip the Grille Assembly over on its face.

Take the Hardware and thread them onto the T-REX Grille's pre-determined mounting post threads. Note that the "L-Bracket" will need to be pointing back towards the grille to properly be able to properly mount the grille

Spin the assembled "L-Bracket" down so that they tighten the grille and secure it into position.

GRILLE ASSEMBLY - COMPLETE

GRILLE ASSEMBLY - COMPLETE

UPPER CLASS GRILLE

GRILLE INSTALLATION - START

MAIN GRILLE OVERLAY #54124 / #51124
2016-2017 CHEVROLET SILVERADO 1500



STEP 7

SEE FIGURES 17 & 18

7) Take the grille assembly and carefully put it back into position on the nose of the vehicle and insert it onto and over its mount.

STEP 8

SEE FIGURES 19-20

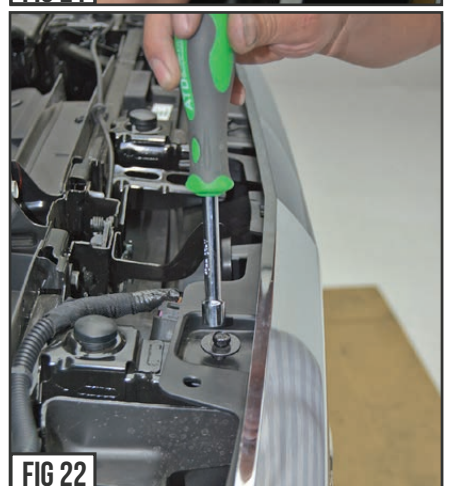
8) Give it a firm push in the lower bottom corners till it snaps. This will confirm that it has been installed properly.



STEP 9

SEE FIGURES 21-22

9) Re-install all the removed hardware that secures the factory grille to the vehicle core support. .



GRILLE INSTALLATION - COMPLETE

UPPER CLASS GRILLE

INSPECT YOUR WORK

MAIN GRILLE OVERLAY #54124 / #51124
2016-2017 CHEVROLET SILVERADO 1500



STEP 10

10) Check over your work for hardware tightness and visual inspection.

STEP 11

SEE FIGURES 23 - 25

11) At this point you want to look over your work and examine the gap alignments around all edges and in between the new T-REX Grille and the vehicle components and body lines. Carefully close the hood for a complete visual inspection. If adjustment is needed, you can remove grille and loosen the hardware mounts and shift side to side or up & down to achieve proper look.

GRILLE INSTALL - COMPLETE





LED LIGHTING EQUIPMENT INSTALLATION / DISCLAIMER

WARNING

PLEASE CONSULT YOUR LOCAL AUTOMOTIVE ELECTRICAL PROFESSIONAL FOR INSTALLATION SERVICES AND ADVICE. T-REX IS ONLY EQUIPPED TO PROVIDE BASIC TECHNICAL ASSISTANCE DUE TO THE DIVERSITY OF VEHICLES, VEHICLE OPTIONS & MODIFICATIONS AND LIGHTING CONFIGURATION OPTIONS AVAILABLE. T-REX Truck Products cannot be held liable due to improper component installation and / or faulty wiring.

GENERAL GUIDELINES

LED Lights & LED Light Bars operate at relatively high currents and should only be installed by qualified personnel with experience in switched / relayed high draw DC Circuits.

- Light Bars are designed for use only with standard 12v DC power systems
- Light Bars are for OFF-ROAD USE ONLY. Check your local laws & regulations regarding vehicle mounted lights.
- Some Light Bars are equipped with waterproof connectors while others are simply pig-tailed
- Red Wires = POSITIVE | Black Wires = NEGATIVE
- ALWAYS install your lights on a fused circuit. Basic fusing guidelines: maximum 5A for every 10" of LED Light Bar.

GENERAL USE, INSTALL AND ADJUSTMENT TIPS

NOTE 1: T-REX Torch Series Grilles (with LED Light Bars installed), and LED Light Bars themselves are for OFF-ROAD USE ONLY.

NOTE 2: Light Bars in Torch Series Grilles are installed flush with the grille from the factory. This may or may not be the ideal angle for each light depending on the configuration of your vehicle and its options and/or modifications. To adjust the angle of your light bars simply loosen the mounting hardware on either side of each Light Bar, rotate the Light Bar to adjust the angle, then tighten the hardware once the desired angle is achieved (please be careful not to over-tighten the mounting hardware or scratch the protective powder-coat finish). It is best to adjust the angle with the vehicle on level ground with the lights facing a wall, garage door or other solid barrier at a distance of approximately 25-30 feet.

NOTE 3: Please consult a qualified automotive electrical professional for light bar wiring installation.

NOTE 4: An optional universal wiring harness (part# 639HAR1) is also available that includes high-heat & oil/fuel resistant wires, waterproof connector, 12v relay, 12v rocker switch, inline fuse holder. Our universal wiring harness significantly expedites the installation process but is not a vehicles specific "Plug & Play" product and does not eliminate the need for a professional installation.

GRILLE CARE INFORMATION

GRILLE CARE INFORMATION

T-REX grilles are finest in the industry but do require normal care. Wash regularly as you would when caring for your vehicles. Never use dish soap.

POLISHED FINISH

T-REX polished grilles should be waxed at the same time that you wax the vehicle and can be cleaned with soap and water. A polished finish can be cared for in the same fashion that would care for your vehicles factory chrome. Never leave wet water spots as that may leave a blemish.

MATTE BLACK FINISH

Paint warranty applies to defects in material and / or workmanship, it does not cover the matte finish surface appearance.

To enjoy the matte appearance for many years to come, please follow these owner care and maintenance tips.

Get a no-shine matte car wash soap that uses no fillers, no silicone, and won't strip your matte paint of its layer of protection.

Do not use wax, detail spray, armorall®, or any products made for normal paint. Use only products specifically developed for matte finish paint. Do not use products that are even mildly abrasive, such as polishes, glazes, or rubbing compounds. Do not use mechanical cleaners or polishers. Do not use terrycloth, cloth, or paper towels. Do not rub the finish vigorously, this will burnish the paint finish, causing a permanent shiny spot. Shiny spots cannot be removed.

Do not use commercial car wash facilities or their shine enhancement products. Most car wash brushes, large mechanized "towels," and shine enhancement products can damage matte paint.

Remove foreign substances such as insect remains, tar, and road debris using a soft applicator and a mild solvent; saturate and soak area before cleaning—rub lightly.

Hand-wash with a soft wash mitt and mild cleaning product safe for matte paint. Use microfiber cleaning cloths with alcohol-based window cleaner for basic surface clean-up.

GLOSS BLACK FINISH

T-REX Grilles with Gloss Black Powder Coated Finish may be washed regularly as you would when caring for your vehicles finish using soap and water. T-REX grilles should be waxed at the same time that you wax the vehicle. As a general rule, anything you use to clean your vehicles painted surfaces can be used to clean and maintain your T-REX grille. A Gloss powder Coated Finish can be cared for in the same fashion that you would care for your vehicles factory paint job. Never leave wet water spots as that may leave a blemish.

Learn more about car and truck custom grilles we have.