

T-REX

GRILLES



BILLET SERIES GRILLE

MAIN GRILLE - #21213, AND #21213B

2019-2021 GMC SIERRA 1500

ALL RIGHTS RESERVED - COPYRIGHT ©2020 - T-REX TRUCK PRODUCTS, INC.

PARTS INCLUDED

- 5 Piece Billet Overlay - Part # 21213 (Polished) or
- 5 Piece Billet Overlay - Part # 21213B (Black)

HARDWARE INCLUDED

- (16) - #8 Oval Screws
- (12) - #8 U-Nut / Black Speed Nuts
- (12) - "J" Hook Brackets
- (4) - #8 Flat Nuts

TOOLS REQUIRED

- Prying Tool
- Screw Drivers
- Various Socket Set
- Various Wrenches
- Ratchet Tool
- Ratchet Extensions

INSTALLATION GUIDE

BEFORE YOU BEGIN

PLEASE READ AND UNDERSTAND ALL INSTRUCTIONS BEFORE INSTALLATION. Auto makers offer varied models to each vehicle and occasionally manufacture more than one body style of the same model.

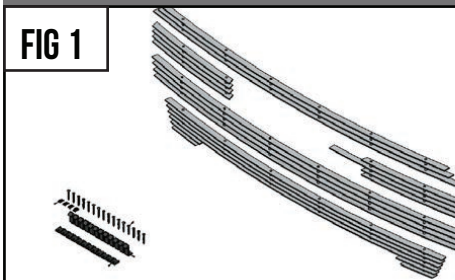
* APPLICATION MODELS VARY. WE RECOMMEND TO VERIFY FITMENT BEFORE BEGINNING INSTALLATION PROCESS.
* IMAGES FEATURED IN THE INSTRUCTION DOCUMENTS MAY NOT ALWAYS EXACTLY MATCH YOUR MODEL OR PART.

START HERE

Turn off engine, chalk tires with stop block, open the hood and disconnect the battery.

LED LIGHT BRACKET INSTALLATION

FIG 1



STEP 1

1) Open and unbox the package. Sort out all components and hardware pack.

STEP 2

2) Take the top Billet Piece (3 Bars) and put into position the Billet Grille over and onto the top OEM grille opening.

SEE FIGURE 2

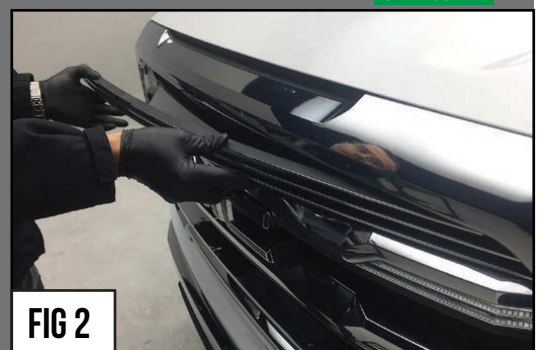


FIG 2

T-REX

GRILLES

GRILLE INSTALLATION - CONTINUED

ALL RIGHTS RESERVED - COPYRIGHT ©2020 - T-REX TRUCK PRODUCTS, INC.

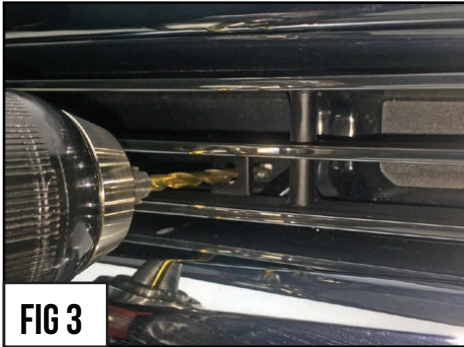


FIG 3



FIG 4



FIG 5

STEP 3

SEE FIGURES 3 & 4

3) With the T-REX Billet Grille properly centered in the OEM Grille opening, use the pre-determined mounting point to locate where to drill. Mark this location. Remove T-REX Grille and drill the OEM Grille Shell with a 3/16" Drill Bit.

STEP 4

4) Repeat as necessary for all the pre-determined mounting points along the top Billet Piece.

STEP 5

SEE FIGURE 5

5) Now it is time to gain access behind OEM Grille. Remove the bolts that holds Grille Shell onto core support. With the bolts removed, pull up the Grille Shell.



FIG 6

STEP 6

SEE FIGURE 6

6) Put the top Billet Piece and put it back into place in the top grille opening. Take one of the #8 Screws and a Flange Nut.



FIG 7

STEP 7

SEE FIGURE 7 & 8

7) Secure the T-REX Grille top Billet Piece in place using the #8 Screw from the front and tighten into the Flange Nut from behind OEM Grille Shell as seen in Figures #7 and #8.

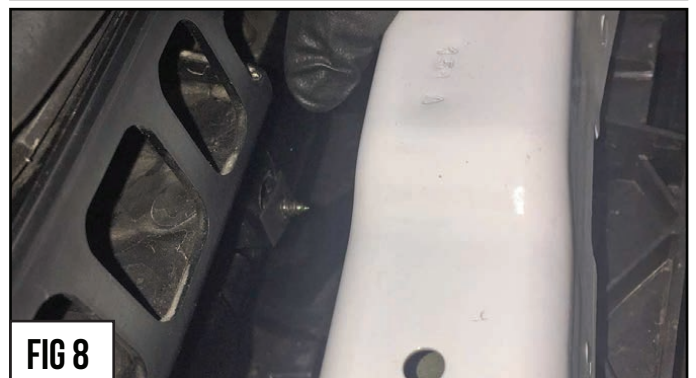


FIG 8

GRILLE INSTALLATION - CONTINUED

T-REX

GRILLES

GRILLE INSTALLATION - CONTINUED

ALL RIGHTS RESERVED - COPYRIGHT ©2020 - T-REX TRUCK PRODUCTS, INC.



STEP 8

SEE FIGURE 9

8) For the next T-REX Billet Grille, moving from the top down, you will have to assemble the U-Nuts with the J Hook Brackets. Slip the U-Nut onto and over the J Hook as seen in Figure #9. Do this and assemble all the U-Nuts onto the J Hooks.

STEP 9

SEE FIGURE 10

9) Put into place the #8 Screws in the pre-determined Billet Grille Mounting Point., and then thread on the previously assembled U-Nut / J Hooks. Insert the screws into all Grille Mounting Points.

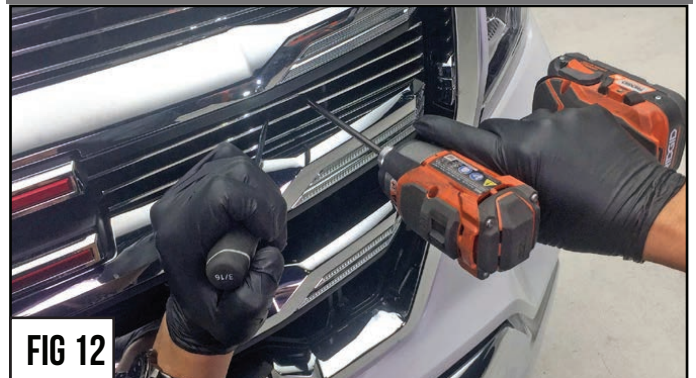
Note the J Hooks proper orientation as seen in Figure #10.

STEP 10

SEE FIGURE 11 - 13

10) Put all of the T-REX Billet Grille Pieces into place in each of the Grille Openings. Secure them into position by tightening the screws. As the screws are tightened the J Hooks will need to be positioned to work as a clamp and fix itself to the Grille Shell.

A prying tool will help control the hardware until it can be properly positioned and tightened as seen in Figure #12.



STEP 11

SEE FIGURE 13

11) Continue for each of the T-REX Billet Grille pieces until all is properly installed.

Check your work and confirm that each J Hook is properly fixed into position and securely holding the Grille Overlay in place.



STEP 12

SEE FIGURE 14

12) Return the OEM Grille Shell into the proper position. It should be easily popped or pushed back into place. Secure and tighten the bolts that were removed in Step # 5.



GRILLE INSTALLATION - COMPLETE

T-REX GRILLES

INSPECT YOUR WORK

ALL RIGHTS RESERVED - COPYRIGHT ©2020 - T-REX TRUCK PRODUCTS, INC.

STEP 13

INSPECT YOUR WORK

13) Carefully inspect your work and make certain all vehicle panels have been installed and align correctly as factory fitment.



GRILLE INSTALLATION - COMPLETE