

**672206X**  
**07-10 GMC SIERRA**  
**2500HD / 3500**



**672206X**  
**07-10 GMC SIERRA**  
**2500HD / 3500**

## **07-10 GMC SIERRA 2500HD / 3500** **X-Metal Series Bumper Grille 2 Pc.**

### **TOOLS REQUIRED:**

Flat / Slotted Screwdriver  
Socket & Ratchet Set  
Drill/Drill Bit Set  
7/16" Wrench

### **PARTS LIST:**

(2) X-Metal Grilles  
(2) 1/4"-20 x 3/4 Bolts  
(2) 1/4" -20 Nuts  
(8) #10 Flat Washers  
(2) Fender Washers  
(2) 1/4" Flat Washers  
(2) 1/4" Lock Washers  
(8) 6/32" Nylon Lock Nuts  
(2) 2" Machine Screws

### **Step 1**

Remove the four plastic clips on splash shield to allow access from behind the bumper. Center the mesh behind the bumper openings. Use the factory hole in the bumper to secure the mounting brackets. These brackets apply pressure to the back of the mesh insert; this will hold it securely in place. If more pressure is required to hold the mesh insert; remove the brackets and use pliers to flatten the brackets. Place the bolt into the stock holes in bumper; then place a flat washer, lock washer and nut then tighten (Fig 1). Replace clips into available stock holes.

### **Step 2**

Use a screw driver to remove the license plate. The factory license plate mount is held to the bumper air dam by four aluminum rivets. Drill the rivets out using a 3/16" drill bit. Remove and set aside to re-install the license plate. Use a 19mm (or 3/4") socket to remove the factory tow hooks. Remove the tow hooks if applicable.

### **Step 3**

Test fit the grille into the bumper opening. The grille has six studs welded to the back; use these as a guide to mark the holes onto the air dam. Drill 3/16" holes at each mark (Fig 2). Re-center the grille; from behind the air dam, secure each screw using the smaller #10 washers and lock nuts.

### **Step 4**

The factory license plate mount can be modified to mount on the bumper billet. A portion of the license plate mount must be trimmed to re-install. As shown; apply a strip of masking tape to draw a line on each end (Fig 3). Use a die grinder to remove the excess material from the license plate mount (Fig 4). The last picture shows a profile view of the license mount after your cuts (Fig 5). Center the upper mounting holes on the plate mount to the factory holes in the air dam. Install the 2" machine screws and fender washers into the upper mounting holes; secure the screws from behind the air dam using the remaining #10 washers and lock nuts. Installation complete.

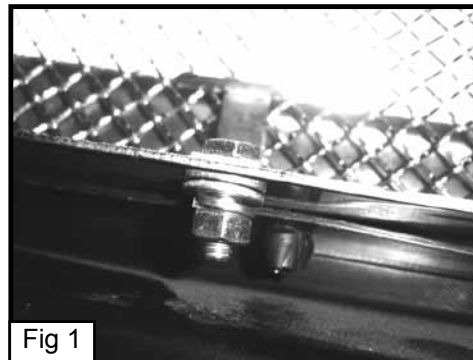


Fig 1

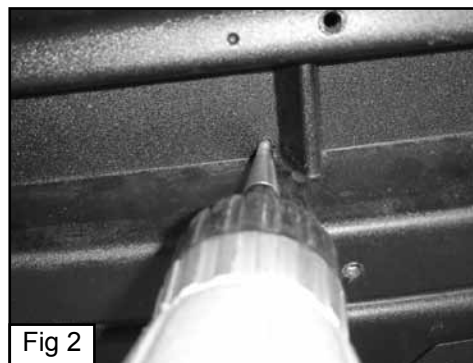


Fig 2

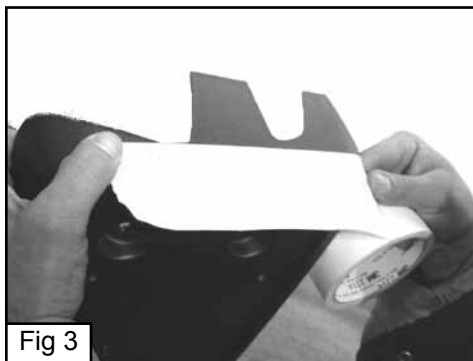


Fig 3



Fig 4

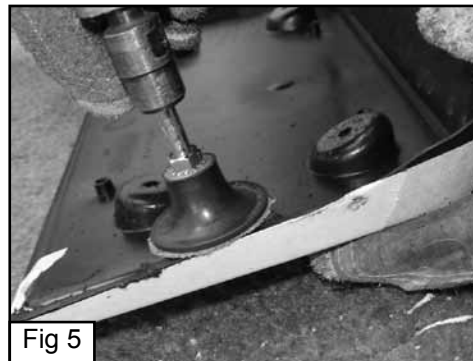


Fig 5