

T-REX Billet Grilles

54391

06-08 BUICK
LUCERNE

54391

06-08 BUICK
LUCERNE

06-08 BUICK LUCERNE **STAINLESS STEEL MESH INSERT OVERLAY**

Recommended Tools:

Phillips / Slotted Screwdrivers
Diagonal Cutters

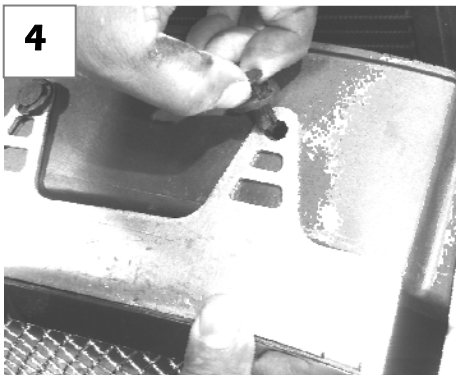
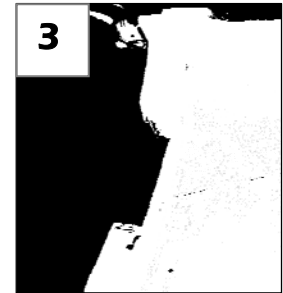
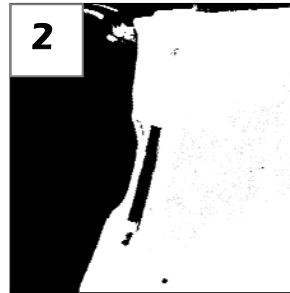
Parts List / Hardware:

1 Billet Insert
4 Plastic Fasteners
4 6/32 Nylon Nuts
4 #10 Washers
1 Upper Steel Retainer
1 Lower Plastic Retainer

Read and understand instructions before attempting installation

Step 1

Remove the 8 plastic rivets securing the radiator cover by pressing on rivet center. Remove the 6 plastic retainer clips from top of grill and near head lights. Use a flat screw driver to compress pressure clips on lower grill radius.



Step 2

With grille out, cut the two, top left and right, side clips on bumper (1-3). Fasten top steel plate using the provided nuts and washers. Position the grill into place using the bumper slot as guides. Fasten lower plastic retainer and grille to lower bumper using four plastic fasteners. Place upper steel retainer on studs with #10 washers and 6/32 nylon nuts. Tighten these down.

Step 3

Using the factory clips, Place the four clips into bracket holding the grille to the vehicle (4). Replace plastic cover on motor.

Thank you for purchasing a T-Rex Billet Grille. 6/17/07