

54209
11-13 GMC
SIERRA HD



54209
11-13 GMC
SIERRA HD

GMC SIERRA HD

Upper Class Mesh Grille Insert

TOOLS REQUIRED:

Phillips Screwdriver
Drill & 6/32 Drill bit
Plastic Prybar

PARTS LIST

(4) 4.5 L-Brackets (4) 6/32 Nylon Lock Nuts
(5) Flatnuts (1) Mesh Grille
(5) #8 Screw

PLEASE READ AND UNDERSTAND ALL INSTRUCTIONS BEFORE ATTEMPTING INSTALLATION.

Step 1

Remove (10) clips from plastic cover. (Fig. 1)
Remove plastic cover.
Remove (4) 10mm bolts along the top of grille. (Fig. 2)

Step 2

Grille is attached to bumper filler and requires removal to remove grille. Remove 2 10mm bolts from side fender. (Fig. 3)

Step 3

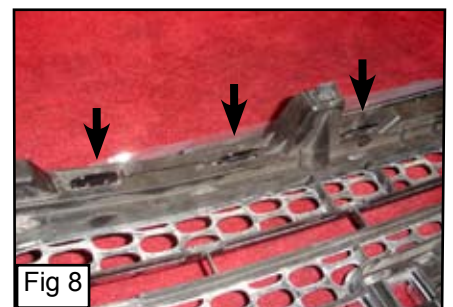
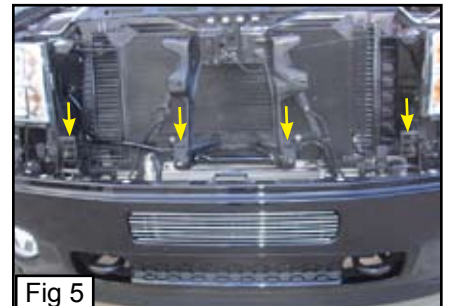
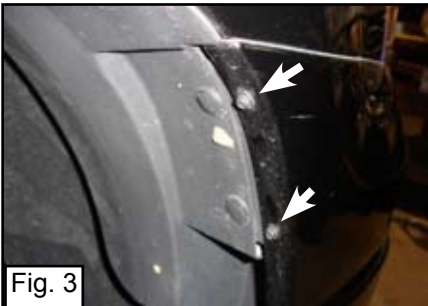
Unclip 4 clips that secure the factory grille. (Fig. 4 & 5)

Step 4

On each end, 3 molded clips secure bumper filler, Carefully pull on side bumper to release clips. (Fig. 6)
Remove factory grille and bumper (grille and bumper are clipped together). (Fig. 7)

Step 5

Unclip 4 clips from factory grille to separate the grille shell from the bumper filler. (Fig. 8)



GMC SIERRA HD

Upper Class Mesh Grille Insert

Step 6

Mark along the grille shell (Fig. 9 & 10)
With a Jigsaw, cut around grille to remove the 3 plastic bars.
(Grind and cut excess material). Leave the flat plastic area on top of grille. (Fig. 10)

Step 7

With the 6/32 Nylon Locks, Install (4) 4.5 L-Brackets along the top of grille. (Fig. 11)

Step 8

Insert the factory shell on the billet grille. (Fig. 12)
Drill a 6/32 hole through the hole on the bracket.(Fig. 13 & 14)

Step 9

Insert a #8 screw where you drilled the hole.(Fig. 15)
Insert a Flatnut behind to screw in place. (Fig. 16)
Re-Assemble bumper, plastic cover, nuts and clips.

Installation Complete.

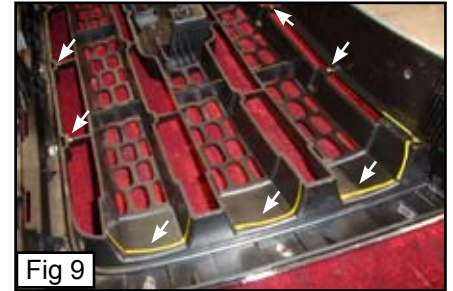


Fig 9

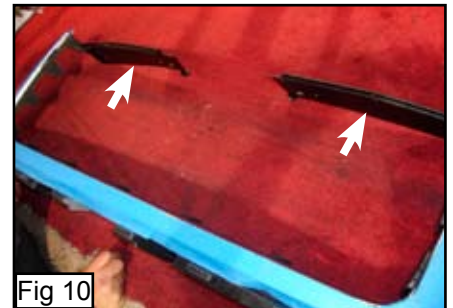


Fig 10



Fig 11



Fig 12



Fig 13

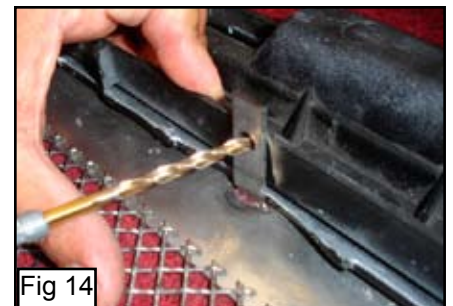


Fig 14



Fig 15



Fig 16



Fig 17