

# T-REX TRUCK PRODUCTS INC.

## 25440

**94-01 DODGE**  
**RAM TRUCK**  
**6 BAR - BILLET**  
**BUMPER INSERT**

## 25440

**94-01 DODGE**  
**RAM TRUCK**  
**6 BAR - BILLET**  
**BUMPER INSERT**

### Tools Required:

Phillips Screwdriver  
7/16" Wrench  
7/16" Socket  
Ratchet

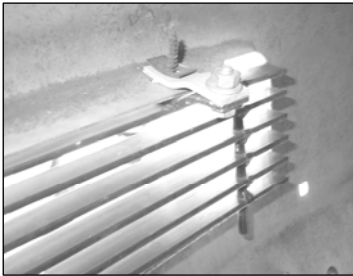
### Hardware / Parts List:

2	Bumper Inserts (6 bar)	4	¼-20 x ¾ Bolts
4	#10 x 1" Phillip Screws	4	¼-20 Nuts
4	#10 Flat Nuts	4	¼ Flat Washers
4	Extension Brackets	4	¼ Lock Washers

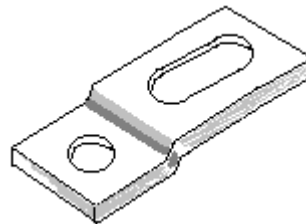
## Read and understand instructions before attempting installation

### Step 1

The factory bumper inserts are held in by rivets and plastic tabs; Break these and remove the factory bumper inserts. Now attach the extension brackets to the inserts with the ¼" fasteners (bolts, nuts & washers).



Secure this end to  
the billet insert.



### Step 2

Place each bumper billet in the bumper opening with the brackets on top. The extension brackets attach to factory holes in the bumper. Fasten using the #10 screws and flat nuts. The holes in the brackets are extended so you can adjust the billets in the bumper opening.



### Step 3

Make sure the inserts are centered and tighten the fasteners.

***Thank you for purchasing your T-Rex billet grille. 9/16/05***