

21114 21114B 11-13 CHEVY SILVERADO HD 2500HD/3500



21114 21114B 11-13 CHEVY SILVERADO HD 2500HD/3500

11-13 CHEVY SILVERADO HD 2500HD/3500

Billet Grille Overlay Bolt-On or Insert - 2 Pc.

TOOLS REQUIRED:

Socket & Ratchet Set
Screwdriver Set
Punch Set
Jigsaw/Grinder/Cutting Wheel
Masking Tape
Vise Grips

PARTS LIST

(18) 3/8" Screws
(6) 6" Custom Brackets (6) 3/4" #8 Screws
(6) 4" Custom Brackets (6) #8 Nut Plates
(12) #8 U-Nuts
(12) 2" #8 (6) Head Screws



Step 1 Factory Grille Removal

Remove the factory grille from the vehicle. There are 10 plastic pop clips on the radiator top cover, remove them (Fig 1) and remove the radiator cover. Now remove the four 10mm bolts from the top of the factory grille (Fig 2). Now reach down behind the factory grille and unlatch the plastic latches along the bottom of the back side of the factory grille and remove the grille from the vehicle.

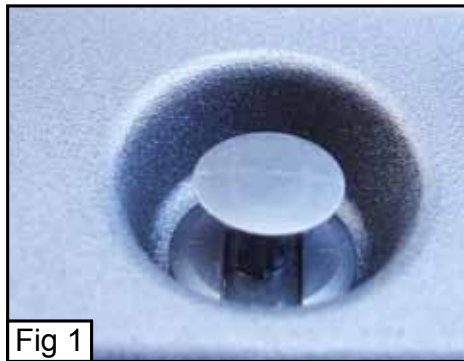


Fig 1

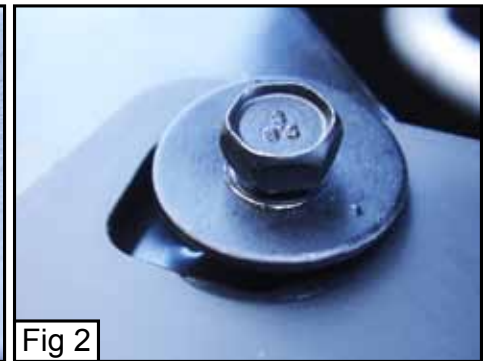


Fig 2

Step 2 Billet Installation ***INSERT METHOD***

This section will guide you through installing the billet grille as an insert which means the black cross hatch pattern in the factory grille will be cut out. This method requires more work than the overlay method. If you would like to install the billet grille as an overlay skip to the next section "Billet Grille Installation ***Overlay Method***". With the factory grille removed you will now cut out the cross hatch pattern plastic from the two openings of the factory grille. Use masking tape over the chrome sections on the factory grille to prevent scratches. Now take the parts bag and locate the six 6" brackets and the six 4" brackets along with the twelve u-nuts. Install the u-nuts onto the brackets, on the 6" brackets the barb on the u-nuts will go on the side of the bracket with the bends (Fig 3). On the 4" brackets the barb on the u-nuts will be on the side where the arrow points to in (Fig 4).

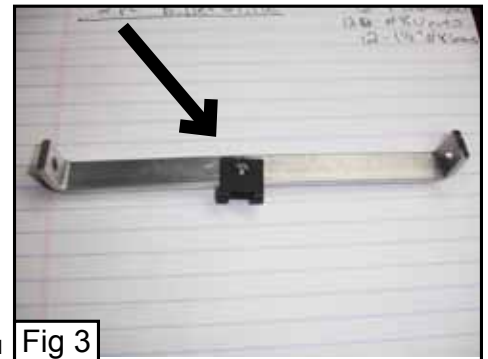


Fig 3

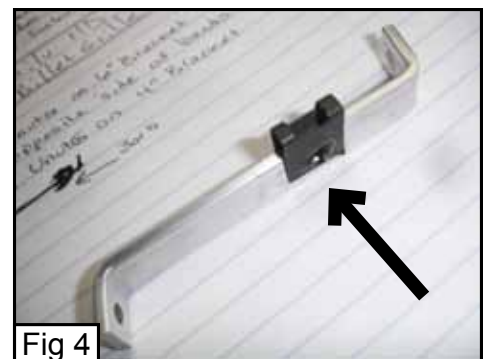


Fig 4

21114 21114B

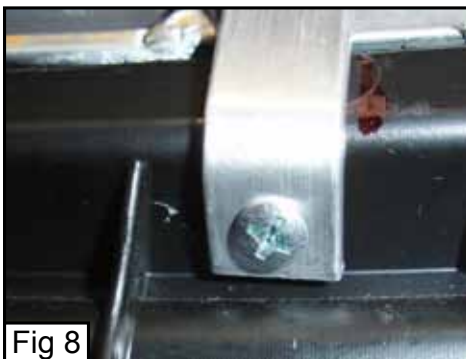
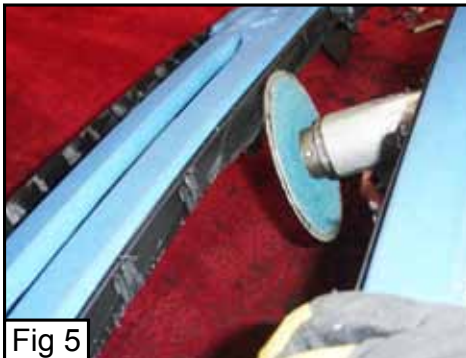


21114 21114B

CHEVY SILVERADO HD 2500HD/3500 Billet Grille Overlay Bolt-On or Insert - 2 Pc.

Step 2 Billet Installation ***INSERT METHOD*** Continued

Now take the factory grille and place it on a workbench. You will now cut the mesh cross hatch out of the two openings. Use a jigsaw or grinding wheel to cut the cross hatch from the backside of the factory grille. Now use a grinding wheel to smooth the cuts clean (Fig 5). Insert the billet grille into the lower opening in the factory grille from the front (Fig 6). Now take the 1 1/2" screws and insert them through the billet bars and the small square tabs welded onto the back of the billet grille, take the six 6" brackets and from the backside of the grille install them onto the screws you just inserted with the bent ends of the brackets wrapping around the plastic lip on the factory grille, make a mark where the brackets line up on the plastic lip of the factory grille shell (Fig 7). Remove any plastic fins that interfere with the bracket installation. Now take twelve of the small 3/8" screws and insert them through the holes in the bent arms on the brackets for the lower billet grille, use a screwdriver to tighten the screws, they will screw into the plastic lip in the factory grille opening and keep the brackets from moving (Fig 8). Now tighten the six screws that you installed through the billet bars and into the u-nuts on the brackets. Now insert the top billet into the factory grille. You will repeat the process on the top billet with the shorter brackets. On the top billet the bent end of the bracket with the hole near it will face rearward. Make a mark where the brackets line up on the plastic lip of the factory grille shell and remove any plastic fins that interfere with the bracket installation. On the lower bent end of the brackets repeat the process using the 3/8" screws. On the upper bent ends drill a small hole through the top plastic plate on the factory grille where the hole in the bracket lines up. Insert the 3/4" screws through the drilled holes in the plastic, the hole in the bracket and place a nut plate on the back and tighten (Fig 9). Reinstall the completed grille onto the vehicle and reinstall the radiator top cover.



21114 21114B



21114 21114B

CHEVY SILVERADO HD 2500HD/3500 Billet Grille Overlay Bolt-On or Insert - 2 Pc.

Step 2 Billet Installation ***OVERLAY METHOD***

Now take the factory grille and place it on a workbench. Insert the billet grille into the lower opening in the factory grille from the front (Fig 6). Now take the 1 1/2" screws and insert them through the billet bars and the small square tabs welded onto the back of the billet grille, take the six 6" brackets and from the backside of the grille install them onto the screws you just inserted with the bent ends of the brackets wrapping around the plastic lip on the factory grille (Fig 11). Now tighten the six screws that you installed through the billet bars and into the u-nuts on the brackets. Now insert the top billet into the factory grille. You will repeat the process on the top billet with the shorter brackets. On the top billet the bent end of the bracket with the hole near it will face rearward. On the upper bent ends drill a small hole through the top plastic plate on the factory grille where the hole in the bracket lines up. Insert the 3/4" screws through the drilled holes in the plastic, the hole in the bracket and place a nut plate on the back and tighten (Fig 11). Reinstall the completed grille onto the vehicle and reinstall the radiator top cover.

