

25211-25211B

2015 GMC Sierra
2500/3500 HD



25211-25211B

2015 GMC Sierra
2500/3500 HD

2015 GMC Sierra 2500/ 3500 HD Billet Bumper Grille Insert

TOOLS REQUIRED:

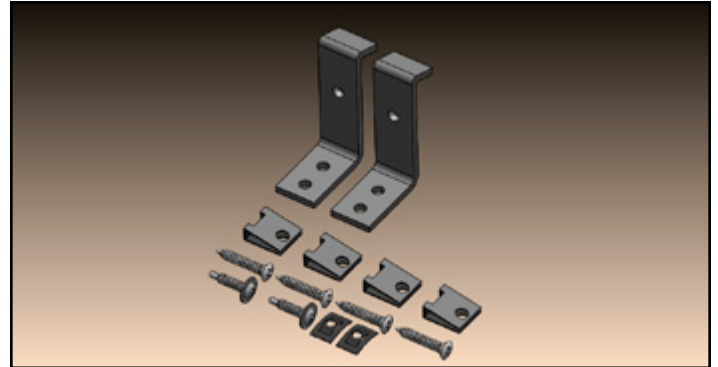
Phillips Screwdriver
Drill

PARTS LIST

2- Mounting bracket hooks
4- #8 u-nuts
4- #8 1" 6 Head screws
2- 3/4" self drilling screw
2- #8 flat nut

NOTE:

- We recommend painting all areas exposed behind grille black prior to installing for best results.



Step 1

Attach the two U Nuts to each side of the mounting brackets. (Fig 1)



Step 2

Place the bracket on the inside of the bumper opening. Drill a 3/16" hole thru the plastic using the bracket as a guide. Secure on the back of the plastic with the flat nut and screw bract into place with the #10 screws. (Fig 2)



25211-25211B

2015 GMC Sierra
2500/3500 HD



25211-25211B

2015 GMC Sierra
2500/3500 HD

Step 3

Insert grille assembly into bumper opening. Secure with the four #8 screws into the U Nuts. (Fig 3)



Step 4

Your installation is now complete.
(Fig 4)

