

**21205**  
**07-13 GMC**  
**SIERRA**



**21205**  
**07-13 GMC**  
**SIERRA**

**2007-13 GMC SIERRA**  
**BILLET OVERLAY**

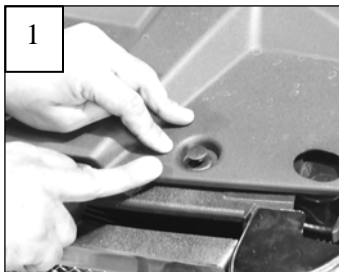
**Recommended Tools:**

Phillips / Slotted Screwdrivers  
10mm Socket & Ratchet

**Parts List / Hardware:**

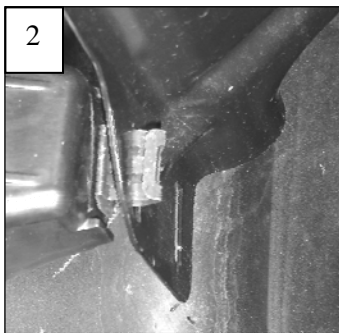
1 Billet Insert  
6 #8 x 1 1/4" Screws (#6 Head)  
6 #8 U-Nuts  
6 1.5" J Hooks

**Read and understand instructions before attempting installation**



**Step 1**

Test fit the grille into the opening. Remove plastic rivets securing the radiator cover; on top of the grille (1). Now remove the four 10mm bolts along the top of the grille. The grille has six metal clips that clip into the core support (2); two behind the GMC logo and four along the bottom. Pull the grille forward; use a slotted screwdriver to release the clips and remove the grille.

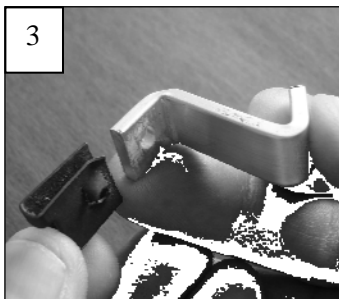


**Step 2**

Slide a u-nut over the small hole in each J hook (3).

**Step 3**

Center the billet over the factory grille. Insert a screw into each hole on the insert. Thread a J hook onto each screw; wrap the hook around the plastic bars; use a screwdriver to tighten hardware. Snug the hardware up evenly around the grille.



**Step 4**

Re-install the grille and radiator cover onto the vehicle.

***Thank you for purchasing a T-Rex Billet Grille.***

