

20457

09-12 DODGE
RAM



20457

09-12 DODGE
RAM

09-12 DODGE RAM 1 Pc. Billet Grille

TOOLS REQUIRED:

Jigsaw
Die Grinder w/ cut & sand Wheels
Pop Rivet Gun
Vise Grips
Drill & 5/32 Bit
10mm Socket & Ratchet
Phillips and Flathead Screwdrivers
Black Marker

PARTS LIST

(8) #8 3/4" Screws
(8) #8 Flat Nut Plates
(2) Pop Rivets
(1) Billet Grille

Step 1 Grille Removal

PLEASE READ AND UNDERSTAND ALL INSTRUCTIONS BEFORE ATTEMPTING INSTALLATION. Remove the 6 clips on the radiator cover with a flat head screwdriver by prying them up until they pop. (Fig 1)

Step 2

Remove the 4 bolts on the top of the grille shell that attach the shell to the radiator support. (Fig 2)

Step 3

Once you have the top of the grille shell loose you need to pull the bottom corners of the grille shell straight out from the vehicle until the clips holding the lower part of the grille pop loose. Do not force the grille, if you need to you can reach down behind the lower portion of the grille and pop the tabs out with your hand. (Fig 3)

Step 4

Once you have the grille shell off of the vehicle apply masking tape over the front of the grille shell to prevent any scratches.

Step 5

Now you are ready to separate the grille shell, the grille shell consists of a front part and a back part. Turn the grille shell face down on a work table so you are looking at the back side of the grille shell. The back part of the grille shell has tabs that hold it into the front part. Unlock these tabs with a flathead screwdriver. Make sure you have them all unlocked. (Fig 4)

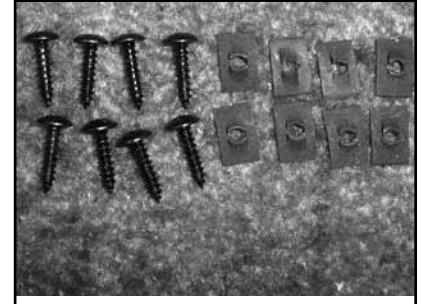


Fig 1

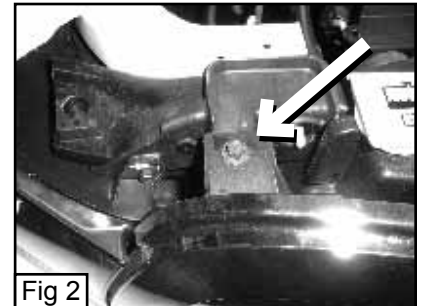


Fig 2

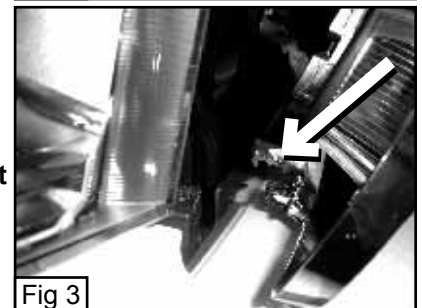


Fig 3

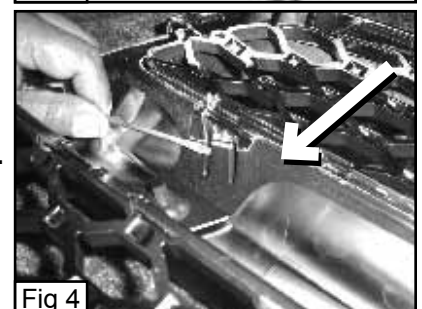


Fig 4

20457

09-12 DODGE
RAM



20457

09-12 DODGE
RAM

Step 6

After all of the tabs are unlocked pry the 2 halves of the grille shell apart using a flathead screwdriver. (Fig 5)

Step 7

The horizontal and vertical bars will now be cut out of the front part of the grille shell. Use a jigsaw and cut the bars leaving approximately 3/8" of material. (Fig 6)

Step 8

Use a sanding wheel to smooth the areas where you cut out the bars. Leave about 1/4" of material where the cuts were made. (Fig 7)

Step 9

Use a black marker to cover up the cut areas. (Fig 8)

Step 10

Set the front part of the grille shell aside. Now take the back part of the grille shell, you will need to cut several parts from it. Using a grinding wheel cut the outside portion of the frame from the inside portion. Cut along the highlighted areas seen below. You will be using the 3 pieces that were cut from the outside. (Fig 9) Use a sanding wheel to smooth the outside frame parts where the cuts were made. (Fig 10)



Fig 5

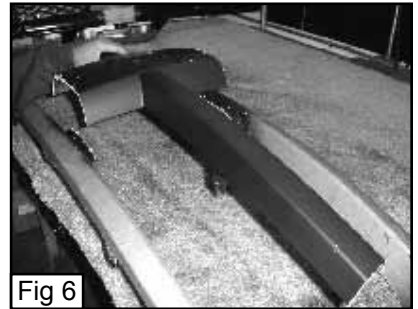


Fig 6

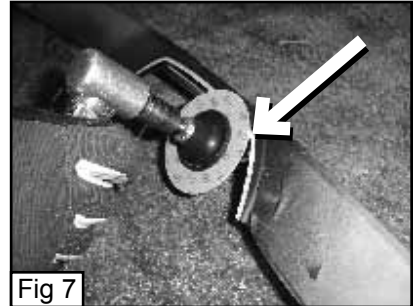


Fig 7



Fig 8

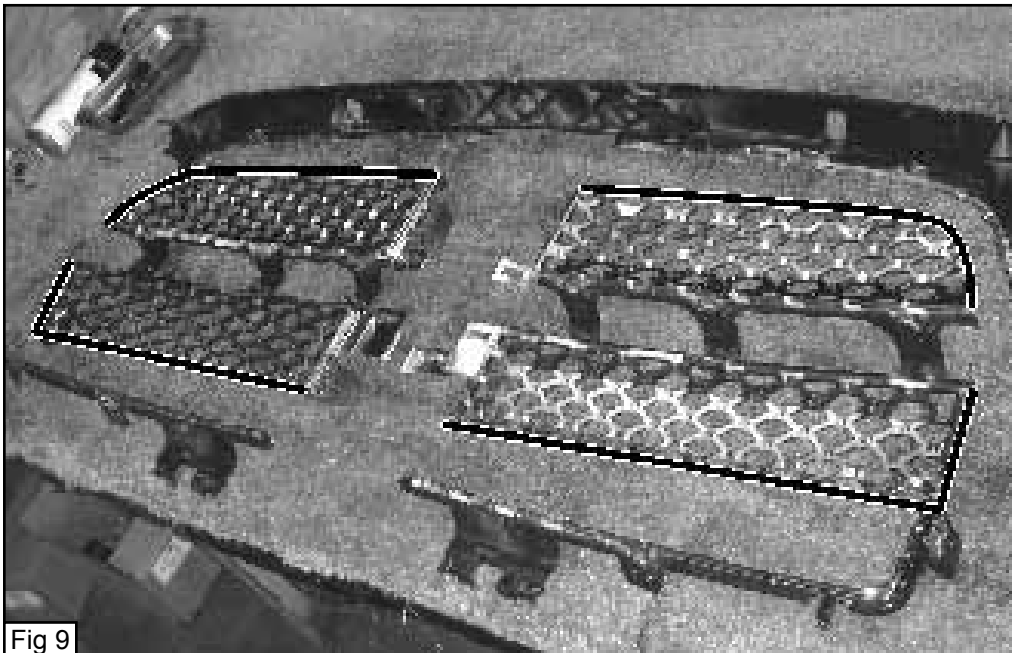


Fig 9

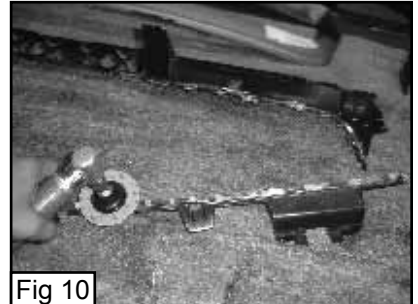


Fig 10

20457

09-12 DODGE
RAM



20457

09-12 DODGE
RAM

Step 11

The 3 parts that were cut from the back of the grille shell will now be installed into the front of the grille shell. The largest of the 3 pieces will snap into the grille shell from the back using the factory latches. (Fig 11)

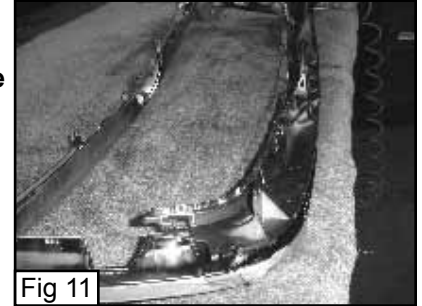


Fig 11

Step 12

The 2 lower parts that were cut will be installed next. Install them on the corresponding side of the grille shell and snap the latches. (Fig 12)



Fig 12

Step 13

The 2 lower parts have a wide section that needs to be riveted to the grille shell. Drill a hole through the grille shell and the cut part and install a pop rivet to secure the 2 pieces. (Fig 13)

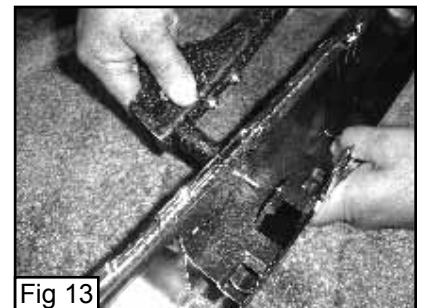


Fig 13

Step 14

Next take the assembly and turn it over on the bench. Put the billet grille into the assembly. (Fig 14) Center the billet grille in the grille shell.

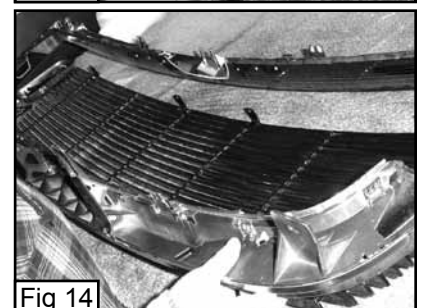


Fig 14

Step 15

Make sure the front of the billet grille and the grille shell are flush. Use a couple of sets of vise grips to hold the billet grille secure. Clamp the vise grips on the tabs of the billet grille and the inner grille shell frame. Drill a hole through the tab on the billet grille and the inner part of the grille shell frame. (Fig 15)

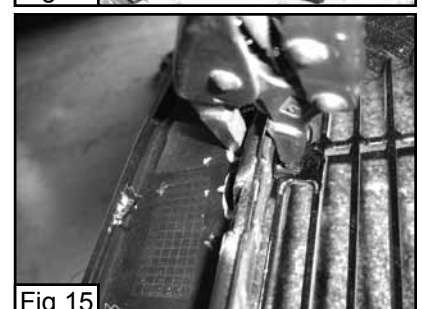
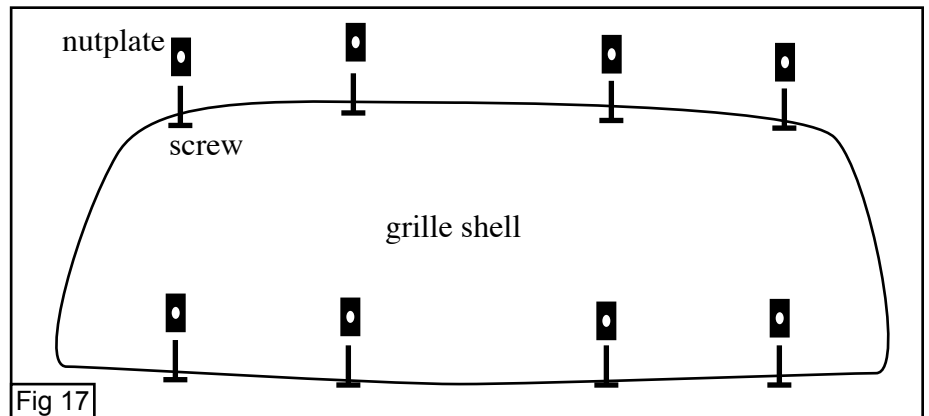
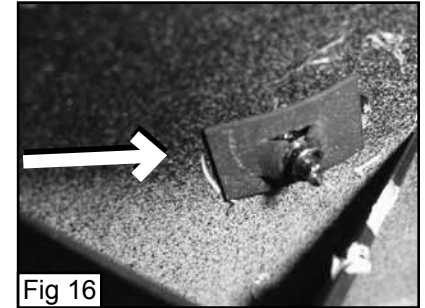


Fig 15

Step 16

Use 8 screws and a nutplate to secure the billet grille to the grille shell frame. Repeat this step on all 8 of the tabs on the mesh grille. (Fig 16)

The 4 screws in the top of the grille shell will install from the center of the shell through the tabs on the billet grille and then through the grille shell and the nut plate. The 4 screws on the bottom of the grille shell will install through the grille shell then the tabs on the billet grille and the nut plate. Install the screws this way to prevent interference when the hood is closed. (Fig 17)



Step 17

Reinstall the completed grille shell assembly onto the vehicle. Align the grille shell up to the vehicle. The lower tabs will be installed first. Reach down behind the grille shell to guide the lower tabs into the tab sockets and push the lower part of the grille inward until you feel the tabs lock in place. Next reinstall the 4 bolts holding the grille shell to the radiator support. Replace the radiator cover and the 6 clips. Installation is complete.

