

# T-REX

## GRILLES



## BILLET SERIES GRILLE

### MAIN GRILLE - #20371 / #20371B

### 2015 GMC CANYON

#### NOTE BEFORE INSTALL:

Your factory grille components and other vehicle front end features may be visible once your new grille is fully installed. To counter this visual element, we have found that you can hide or mostly eliminate the components by blacking out with flat black aerosol spray paint, plasti-dip or any other similar product. If you choose to take on this extra modification, you are advised to mask off any parts or panels that you do not wish to paint over.

T-REX TRUCK PRODUCTS DOES NOT TAKE ON ANY RESPONSIBILITY FOR THIS ADDITIONAL MODIFICATION.

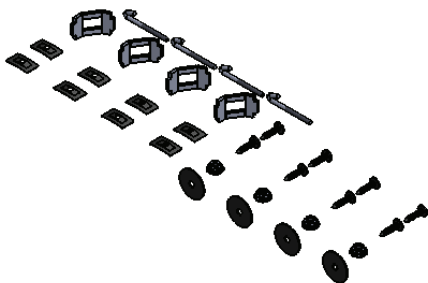
#### GRILLE INSTALLATION GUIDE

#### PARTS INCLUDED

- (1) Main Grille Replacement  
 Polished - Part #20371 OR  
 Black - Part #20371B

#### HARDWARE INCLUDED

- (4) - 1 1/2 J Threaded Hooks
- (4) - Brackets
- (8) - #8 Screws
- (8) - #8 Flat Nut Plates
- (4) - Black Fender Washers
- (4) - #6-32 Stainless Steel Flange Nuts



#### TOOLS REQUIRED

- Jigsaw
- Socket Set
- Socket Extension
- Basic Wrench Set
- Die Grinder
- Torx Bit Set
- Screwdriver Set
- Flash Light

#### STEP 1 | DISASSEMBLY

- 1) Turn off engine and chalk tires with stop block. Open Hood.

#### PRO TIP:

Before you begin, use "3M Painters Tape" to apply a protective guard around the work areas. Attend to exposed chrome, fender bumper valance. This will help protect the paint and finish of your vehicle.

#### STEPS 2-3

- 2) Prepare your work space and and laying out the required tools.
- 3) Now you are ready for the removal of vehicle's front bumper fascia. Start under the nose of the vehicle, remove (6) screws to loosen exterior bottom bumper fascia component.



# BILLET SERIES GRILLE

## MAIN GRILLE - #20371 / #20371B

### 2015 GMC CANYON

## GRILLE REMOVAL - CONTINUED



### STEPS 4 - 6

SEE FIGURES 4 - 7

- 4) Remove (10) screws to loosen and remove wheel well fender liner.
- 5) In the front wheel well peel back the fender liner to access the (3) 7mm bolts that fix lower bumper to front fender. Bolts can be located inside and behind fender liner. Loosen and remove nuts.
- 6) Disconnect plugs to fog lights for both driver and passenger sides of vehicle.



### STEP 7

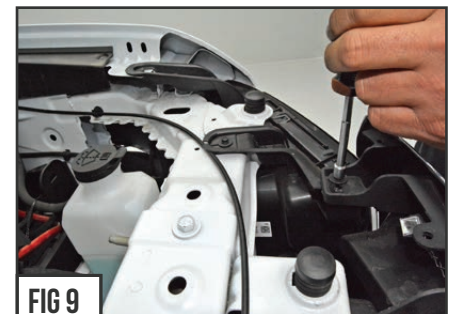
7) Remove (2) bolts located in lower bumper opening behind and underneath. These may be tricky to find so grab a flash light and locate them way up deep inside a small dark plastic shell with hole for your 10 mm socket, long extension, and swivel.



### STEP 8

SEE FIGURES 8 & 9

8) Remove (6) screws across the top that hangs and secures upper grille shroud.



### STEP 9

SEE FIGURE 10

9) For this next step, it may be advised to enlist a friend to help pull and remove the front bumper fascia from the rest of the vehicle. You will need to firmly pop free the tabs near the headlights that secure the front fascia to the fenders. It should now be loose and easily free to remove from nose of vehicle.



## GRILLE REMOVAL - CONTINUED

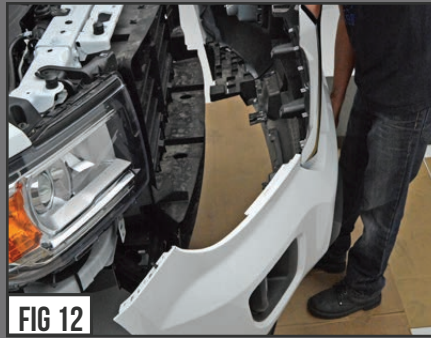
# BILLET SERIES GRILLE

## MAIN GRILLE - #20371 / #20371B

### 2015 GMC CANYON

## GRILLE REMOVAL - CONTINUED

## GRILLE / BUMPER FASCIA REMOVED FROM VEHICLE



STEP 10

SEE FIGURE 11 - 14

10) With the front fascia assembly removed and set down on a flat cushioned surface, use a flat head screwdriver and carefully pry in to release plastic tabs that holds the grille in place and secured to the front bumper fascia.

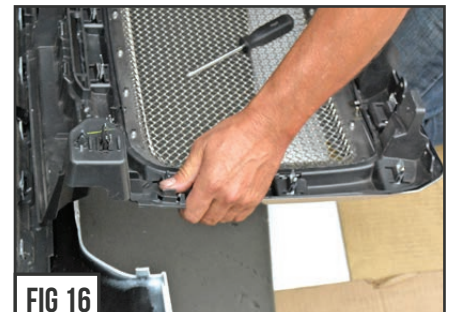


STEP 11

SEE FIGURES 15 & 16

11) Finally, to free the middle OEM grille piece from the complete bumper fascia, locate the snap clip on each side of the corner and pry the tab loose.

The middle grille piece should now be free. Take the front fascia and set aside for assembly.



STEP 12

SEE FIGURE 17

12) Take the middle grille piece and prepare to cut out the middle grille pattern from the center grille component. You will need to leave the chrome shell outer edge intact with a decent amount of plastic material left over inside from the shell.



STEP 13

SEE FIGURE 18

13) Begin making a cut line with a automotive paint pen or bright marker as seen in Figure #18. Make sure to mark your line, from the back side, and flip grille over multiple times to inspect and verify that you are leaving a decent amount of plastic material left over inside from the shell, and that the chrome shell outer edge will be intact and untouched.



## GRILLE INSTALL - CONTINUED

# BILLET SERIES GRILLE

## MAIN GRILLE - #20371 / #20371B

### 2015 GMC CANYON

#### GRILLE / BUMPER FASCIA REMOVED FROM VEHICLE



STEP 14

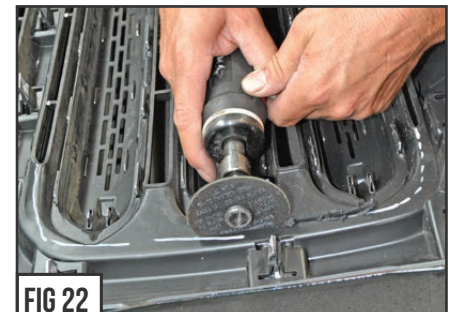
SEE FIGURE 19

14) Continue your cut line along the lower edge where you see 6 gaps and 6 connecting points.



**STEP 15** **SEE FIGURE 20**

15) Continue your cut line along the top edge similar to the example provided in Figure #20.



**STEP 16** **INSPECT YOUR WORK** **SEE FIGURE 23**

16) From the front side, you should again inspect your cuts and verify that you are cutting clear and away from the factory OEM Chrome Shell.



**STEP 17** **SEE FIGURE 21-24**

17) Continue the cut procedure and to cut free the center pattern from the middle grille peice component.



#### GRILLE INSTALL - CONTINUED

# BILLET SERIES GRILLE

## MAIN GRILLE - #20371 / #20371B

### 2015 GMC CANYON

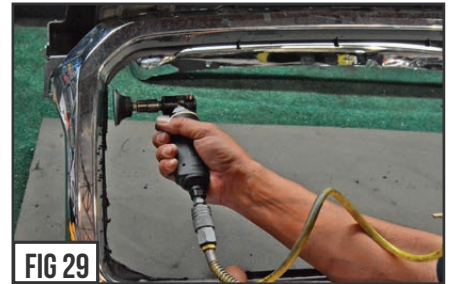
#### GRILLE / BUMPER FASCIA REMOVED FROM VEHICLE



**STEP 18**

SEE FIGURE 26- 28

18) With cut procedure complete and the center pattern cut free from the middle grille component and outer shell, remove the cut pattern and set aside.



**STEP 19**

SEE FIGURE 29

19) Take the grille shell and carefully begin cleaning up the plastic cut debris with a sanding pad or similar tool. Make sure to keep clear of the chrome shell piece, you do not want to scuff up the chrome finish as any damage or marks will be apparent.



**STEP 20**

SEE FIGURE 30

20) Continue sanding down so that main edges will be just about flush with the outer shell.

**STEP 21**

SEE FIGURE 31

21) At this point, you are ready to mate the new T-rex Grille Insert to the OEM Grille Shell.



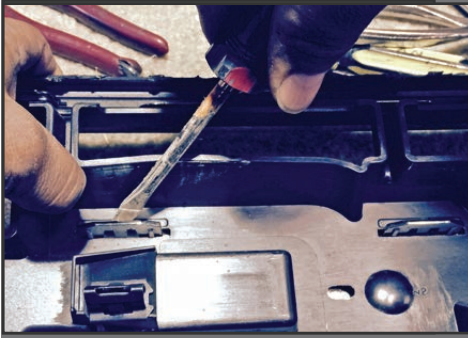
#### GRILLE ASSEMBLY INSTALL START

# BILLET SERIES GRILLE

## MAIN GRILLE - #20371 / #20371B

### 2015 GMC CANYON

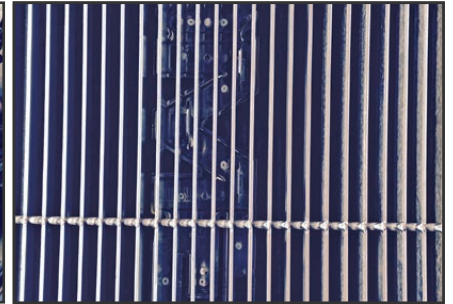
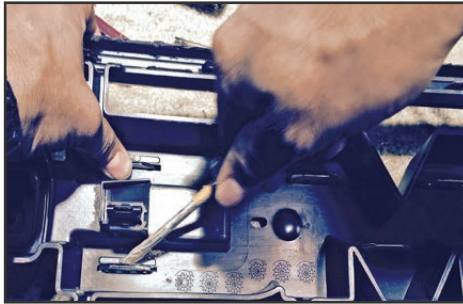
#### OPTIONAL FACTORY BADGE INSTALL - START



##### BADGE INSTALL STEP 1

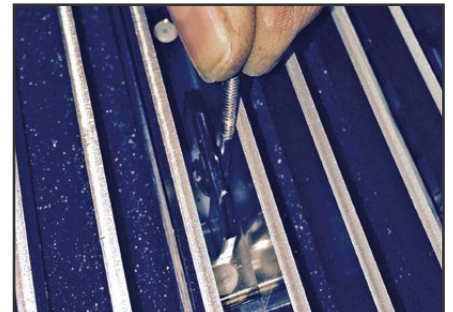
1) This next section is for those that desire to retain their factory OEM Badging. These steps will require a cutting to the badges factory tabs so that it will sit flush on your new grille replacement. You will also have the option to install other types of aftermarket badging accessories as you wish.

2) With the middle grille pattern component removed and set face down on a flat cushioned surface, access the badge mounting components from behind. With a thin flat head screw driver or pry bar, vpry loose the mounting tabs and round push nuts off the post mounting tabs till the "badge" pops free. Leave all tabs in place. You will need these in tact to mount badge.



##### BADGE INSTALL STEP 3

3) At this point you want to take your new grille replacement and from the front side, test fit the badge component so that you find your preferred mounting location. We like the center middle. Mark your location left and right and top and bottom with a washable marker.



##### BADGE INSTALL STEP 4

4) Now clean off the exterior side of the new grille to remove finger prints, grease, oil, ect. We recommend applying some 3M type automotive double sided tape to the backside of the badge plate and carefully place it into your preferred and marker position.



##### BADGE INSTALL STEP 5

5) From the backside of the new T-Rex Grille, insert the provided Threaded J Hooks grabbing the badge tab mount openings and hold tightly. Use the (4) provided brackets and then fit washers and nuts to tighten in place.

See the sample images to the right for the finished look after the grille install is complete.



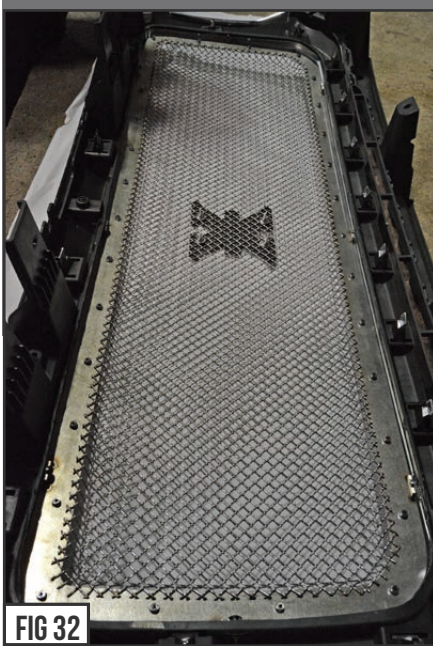
#### OPTIONAL FACTORY BADGE INSTALL - COMPLETE

# BILLET SERIES GRILLE

## MAIN GRILLE - #20371 / #20371B

### 2015 GMC CANYON

#### GRILLE ASSEMBLY INSTALL START



STEP 22 & 23

SEE FIGURE 32

- 22) With the new T-Rex Grille Insert aligned and fitted nicely inside the OEM Grille Shell, pinch the T-Rex Grille mounting tabs with clamps or vice grips to secure the grille fitment and position.
- 23) Inspect component for visual alignment and also appropriate fitting grille depth inside shell .



FIG 32

FIG 33

FIG 34

STEP 24

SEE FIGURES 33 & 34

- 24) Once satisfied, with grille alignment and grille fitment with OEM Shell, using the T-Rex Grille's pre-fabricated mounting tabs to determine where you will drill holes into the OEM Grille Shell Plastic with an 1/8th drill bit.



FIG 35

STEP 25

SEE FIGURE 35

- 25) Insert (8) provided #8 screws into all mounting tabs.



FIG 36

STEP 26

SEE FIGURES 36 & 37

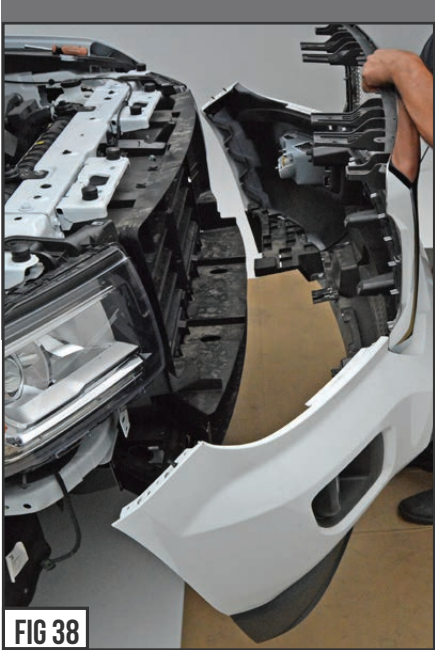
- 26) Using Phillips head screwdriver, screw down and tighten grille insert to OEM Grille Shell. It is important to "marry" the grille seamlessly and tightly so that you can eliminate any gaps or overlaps visible from the exterior side.



FIG 37

#### GRILLE ASSEMBLY INSTALL - COMPLETE

## GRILLE / BUMPER FASCIA INSTALL ON VEHICLE



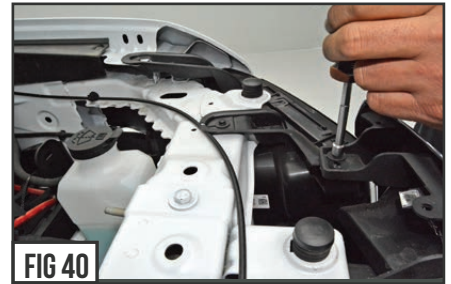
### STEP 27

SEE FIGURES 38 - 40

27) Reverse the process of grille shell removal & separation from the front bumper fascia to re-install & re-assemble vehicle components.

### STEP 28

28) Push back into place the front bumper fascia so that the body will meet and sit flush with the front fenders and hug the edge of the head lamps.



### STEP 30

30) In the front wheel wells, peel back fender liner to fix the 7mm bolts that secure the lower bumper to front fender.

### STEP 31

31) Plug in the Fog light electrical connection.

SEE FIGURE 41

### STEP 32

32) Under the nose of the vehicle, insert the (6) screws to reattach the exterior bottom bumper fascia component to the vehicle's underbody.

SEE FIGURE 42

### STEP 33

33) Insert screws back into fender liner. Re-Install hardware removed from top grille component hanging mounts and put back into place plastic cover shroud.

SEE FIGURE 43 & 40



## GRILLE INSTALL - COMPLETE!



# BILLET SERIES GRILLE

## MAIN GRILLE - #20371 / #20371B

### 2015 GMC CANYON

#### INSPECT YOUR WORK



#### STEP 24 POST INSTALLATION VISUAL INSPECTION

SEE FIGURES 32 - 33

24) At this point you want to look over your work and examine the gap alignments around all edges and in between the new T-REX Grille and the vehicle components and body lines. Carefully close the hood for a complete visual inspection. Finally confirm grille is tight and secure. Check over all vehicle hardware to proper tightness. Install complete! If adjustment is needed, you can loosen the hardware mounts and shift side to side or up & down to achieve proper look.





## T-REX GRILLES PRODUCT WARRANTY

### T-REX GRILLES PRODUCT WARRANTY

T-REX Truck Products warrants its grille products to be free from defects in material and workmanship for the lifetime of the grille. T-REX Truck Products warrants the finish of its grille products for a 3 year period beginning at the time of sale to the end user. These warranties are limited warranties and do not cover abuse, modification or improper installation nor do they cover finish failure caused by caustic cleaning agents, road salts or other chemicals. T-REX Truck Products reserves the right to repair or replace a defective product at its sole discretion. Any T-REX product must be returned to T-REX for warranty consideration and must be returned at the customer's expense. In the event that the product is deemed to be defective, the repaired or replaced item will be returned via a surface shipping method to the customer at T-REX Truck Products expense. No provision is made for any labor, rental car or other costs incurred by the failure of its products.

## LED LIGHTING EQUIPMENT INSTALLATION / DISCLAIMER

### WARNING

**PLEASE CONSULT YOUR LOCAL AUTOMOTIVE ELECTRICAL PROFESSIONAL FOR INSTALLATION SERVICES AND ADVICE.** T-REX IS ONLY EQUIPPED TO PROVIDE BASIC TECHNICAL ASSISTANCE DUE TO THE DIVERSITY OF VEHICLES, VEHICLE OPTIONS & MODIFICATIONS AND LIGHTING CONFIGURATION OPTIONS AVAILABLE. T-REX Truck Products cannot be held liable due to improper component installation and / or faulty wiring.

### GENERAL GUIDELINES

LED Lights & LED Light Bars operate at relatively high currents and should only be installed by qualified personnel with experience in switched / relayed high draw DC Circuits.

- Light Bars are designed for use only with standard 12v DC power systems
- Light Bars are for OFF-ROAD USE ONLY. Check your local laws & regulations regarding vehicle mounted lights.
- Some Light Bars are equipped with waterproof connectors while others are simply pig-tailed
- Red Wires = POSITIVE | Black Wires = NEGATIVE
- ALWAYS install your lights on a fused circuit. Basic fusing guidelines: maximum 5A for every 10" of LED Light Bar.

### GENERAL USE, INSTALL AND ADJUSTMENT TIPS

NOTE 1: T-Rex Torch Series Grilles (with LED Light Bars installed), and LED Light Bars themselves are for OFF-ROAD USE ONLY.

NOTE 2: Light Bars in Torch Series Grilles are installed flush with the grille from the factory. This may or may not be the ideal angle for each light depending on the configuration of your vehicle and its options and/or modifications. To adjust the angle of your light bars simply loosen the mounting hardware on either side of each Light Bar, rotate the Light Bar to adjust the angle, then tighten the hardware once the desired angle is achieved (please be careful not to over-tighten the mounting hardware or scratch the protective powder-coat finish). It is best to adjust the angle with the vehicle on level ground with the lights facing a wall, garage door or other solid barrier at a distance of approximately 25-30 feet.

NOTE 3: Please consult a qualified automotive electrical professional for light bar wiring installation.

NOTE 4: An optional universal wiring harness (part# 639HAR1) is also available that includes high-heat & oil/fuel resistant wires, waterproof connector, 12v relay, 12v rocker switch, in-line fuse holder. Our universal wiring harness significantly expedites the installation process but is not a vehicles specific "Plug & Play" product and does not eliminate the need for a professional installation.

## GRILLE CARE INFORMATION

### GRILLE CARE INFORMATION

T-REX grilles are finest in the industry but do require normal care. Wash regularly as you would when caring for your vehicles. Never use dish soap.

### POLISHED FINISH

T-REX polished grilles should be waxed at the same time that you wax the vehicle and can be cleaned with soap and water. A polished finish can be cared for in the same fashion that would care for your vehicles factory chrome. Never leave wet water spots as that may leave a blemish.

### MATTE BLACK FINISH

Paint warranty applies to defects in material and / or workmanship, it does not cover the matte finish surface appearance.

To enjoy the matte appearance for many years to come, please follow these owner care and maintenance tips.

Get a no-shine matte car wash soap that uses no fillers, no silicone, and won't strip your matte paint of its layer of protection.

Do not use wax, detail spray, armorall®, or any products made for normal paint. Use only products specifically developed for matte finish paint. Do not use products that are even mildly abrasive, such as polishes, glazes, or rubbing compounds. Do not use mechanical cleaners or polishers. Do not use terry cloth, cloth, or paper towels. Do not rub the finish vigorously, this will burnish the paint finish, causing a permanent shiny spot. Shiny spots cannot be removed.

Do not use commercial car wash facilities or their shine enhancement products. Most car wash brushes, large mechanized "towels," and shine enhancement products can damage matte paint.

Remove foreign substances such as insect remains, tar, and road debris using a soft applicator and a mild solvent; saturate and soak area before cleaning—rub lightly.

Hand-wash with a soft wash mitt and mild cleaning product safe for matte paint. Use micro fiber cleaning cloths with alcohol-based window cleaner for basic surface clean-up.

### GLOSS BLACK FINISH

T-Rex Grilles with Gloss Black Powder Coated Finish may be washed regularly as you would when caring for your vehicles finish using soap and water. T-REX grilles should be waxed at the same time that you wax the vehicle. As a general rule, anything you use to clean your vehicles painted surfaces can be used to clean and maintain your T-REX grille. A Gloss powder Coated Finish can be cared for in the same fashion that you would care for your vehicles factory paint job. Never leave wet water spots as that may leave a blemish.