

INSTRUCTION SHEET

PRODUCT: 65145 Exo Aero Roof Mount Kayak Holder

▪ Page 1 of 1



Mounting Instructions

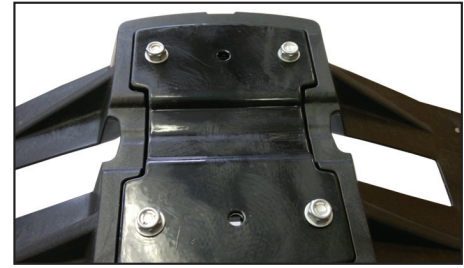
1. Attach the metal support plate to the bottom of the Exo Aero using the 6mm x 20mm Carriage style bolts, washers and nuts. **NOTE:** Do not over-tighten. Image #1.
2. Place the Kayak Holder onto the load bars as shown in Image #2. **NOTE:** The load bars need to be at least 24" between the load bars.
3. Attach the bracket using the two wing style knobs. Do not tighten.
4. Position the second Kayak Holder on the load bar so that it is approximately the same width of the Kayak. Now align each saddle and tighten the knobs on both saddles.
5. Run the end of the webbing strap through the slot as shown in Image #3. Pull the strap until the two straps are equal in length. Repeat for the second saddle.
6. Position the straps off to the front and back of the vehicle. This will allow you to access the straps once the Kayak is loaded. Image #4.
7. Load the Kayak and adjust so that it is evenly centered between the two Kayak saddles. Ensure that the Kayak is in line with the vehicle. **NOTE:** always ensure that the Kayak and the Kayak Holder are clean before loading. Any dirt or sand can cause scratches on the underside of the Kayak when you are loading. **NOTE:** Loading can be done from the back of the vehicle. Set the front of the Kayak on the rear Kayak Holders, and lift the rear of the kayak and slide forward. Care must be taken to ensure that the kayak does not contact the vehicle finish.

Attaching the Kayak

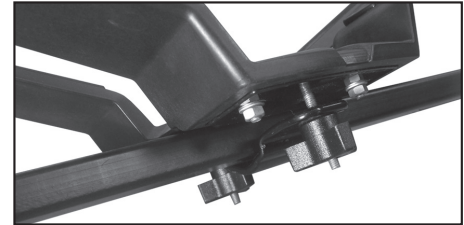
1. Position the webbing straps so that they are over the kayak.
2. Ensure the straps are not covering the kayak opening or any area that is not load bearing.
3. Pull the strap so that the cam buckle is mid point on the side of the kayak. Image #5.
4. Run the free end of the strap down through the slot. Then run the strap up through the inner slot into the cam buckle. Pull the strap to tighten. Image #6. Wrap the free end of the strap around the cross bar so it does not flap in the wind
5. Attach the bow and stern tie downs to a secure point on the bumper or vehicle tow hook. Check the lines regularly to ensure they are always tight.
6. For stability on larger Kayaks run the webbing straps under the cross bar before going through the slot on the kayak holder.

Warnings

1. The load bars must be a minimum of 24" part and the kayak must line up with the vehicle.
2. Make sure that the load bars or roof rack do not exceed the manufacturers limitation for load.
3. Make sure that the straps are on a non load-bearing surface or damage can occur.
4. The rack is designed for Sea Kayaks and White Water Kayaks. It is not designed for aluminum boats.
5. Check straps periodically to ensure they are tight



1



2



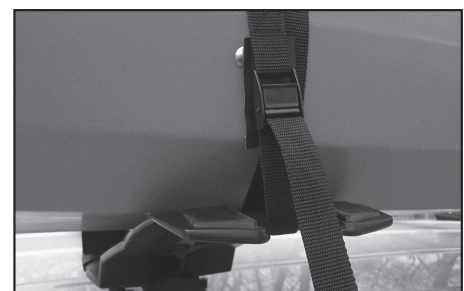
3



4



5



6