

SumoSprings Front

Suspension Enhancement

Jeep Wrangler JK [2007-present]

SumoSprings Part# SSF-402-54 ~ SSF-403-54 ~ SSF-404-54



For unlifted offroad



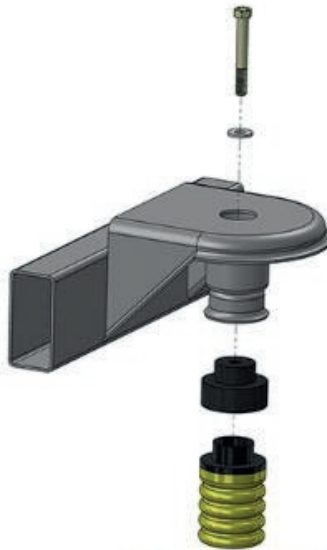
2" lift offroad



4" lift offroad



SSF-402-54



SSF-403-54



SSF-404-54

Installation Instructions

- 1) Park vehicle on level hard surface. Engage emergency brake. Place blocks in front and behind rear wheels to prevent rolling. Observe all safety precautions and wear safety glasses.
- 2) Raise front of vehicle allowing the axle to hang freely. Support the frame using safety jack stands.
- 3) Disconnect the sway bar and shocks from the axle.
- 4) Disconnect the draglink from the pitman arm.
- 5) Lower the axle far enough to remove the front coil.
- 6) Remove the factory bump-stop from the frame.
- 7) If spacers will be used, install them on the top of the Sumospring.
- 8) Locate top of Sumospring, or top spacer into OE bumpstop mounting cup on frame.
- 9) Attach with flat washer and proper length 7/16" bolt.

Note: Correct bolt length must be used to prevent damage to Sumospring

Number of Spacers Used	Length of Bolt
0	2-1/4"
1	3-1/4"
2	4-1/2"

- 10) Reinstall the coil and reattach the draglink, shocks, and sway bar.
- 11) Jack up vehicle, remove safety jack stands.
- 12) Carefully lower vehicle to the hard surface. Remove the blocks in front and back of the rear wheels.
- 13) Release emergency brake.
- 14) Fill out warranty card and send to SuperSprings. The warranty card is on the reverse side of this page.

Important Notice.

- 1) For easy installation please read instructions completely first and have all necessary tools available.
- 2) We recommend that this installation be done by a professional or persons with sound mechanical knowledge.
- 3) SumoSprings are designed to work with the original factory [springs](#) only.
- 4) These instructions are meant as a guide for the installation of SumoSprings. SuperSprings International assumes no liability for the actual installation process. Installers should apply common automotive safety practices when raising, lowering and working on vehicles.
- 5) SumoSprings are designed to enhance the vehicles load carrying performance and road handling however it does not authorize (or recommend) loading beyond the manufacturer's GVWR specifications.

To prevent damage to the vehicle and to ensure safety, do not exceed the maximum load recommended by the vehicles manufacturer (GVWR).