



SUPERLIFT®
S U S P E N S I O N

SUPERLIFT® STEERING STABILIZER KIT
INSTALLATION INSTRUCTIONS

INTRODUCTION

Installation requires a professional mechanic. Prior to beginning, inspect the steering sector-to-frame and all suspension-to-frame attaching points for stress cracks. The overall vehicle must be in excellent working condition; repair or replace all worn parts.

Read instructions several times before starting. Be sure you have all needed parts and know where they install. Read each step completely as you go.

NOTES:

- **Prior to beginning the installation, check all parts and hardware in the box with the parts list below. If you find a packaging error, contact Superlift directly. Do not contact the dealer where the system was originally purchased. You will need the control number from each box when calling; this number is located at the bottom of the part number label and to the right of the bar code.**
- A foot-pound (unless noted) torque reading is given in parenthesis () after each appropriate fastener.
- Prior to attaching components, be sure all mating surfaces are free of grit, grease, undercoating, etc.
- A factory service manual should be on hand for reference.

PARTS LIST ... The part number is stamped into each part or printed on an adhesive label. Identify each part and place the appropriate mounting hardware with it.

Part Number	Qty. per Kit	Description	Qty. per Bracket	New Attaching Hardware	Hardware Bag Number
01-81200 (651991)	2	hydraulic steering stabilizer	1	711027 tapered sleeve	77-92660A
			1	01-60451 sleeve	
			1	1/2" x 3-1/2" fine thread bolt	77-92050A
			1	1/2" lock washer	
			1	1/2" standard nut	
			2	1/2" uss washer (thick)	
			1	1/2" uss washer (thin)	
			1	7/16" fine thread nut	01-60465
			1	7/16" lock washer	
			1	1/2" fine thread nut	
			1	1/2" lock washer	
			1	7/16" USS washer	
			1	shock mounting stud	
55-01-92660	1	center mounting bracket	2	7/16" x 3" x 3-1/4" u-bolt	77-92660B
			4	7/16" Nyloc nut	
			4	7/16" SAE washer	
55-02-92620	2	tie rod mounting bracket	2	5/16" x 1-1/4" x 2" u-bolt	77-92660B
			4	5/16" locking flange nut	

Kit Part Number 92660			Kit Part Number 77-92050A		
Part Number	Qty.	Description	Part Number	Qty.	Description
01-81200 (651991)	2	hydraulic steering stabilizer	12X312F8CS	1	1/2" X 3-1/2" fine thread bolt
55-01-92660	1	center mounting bracket	12F5N	1	1/2" fine thread nut
55-02-92660	2	tie rod mounting bracket	12LW	1	1/2" lock washer
77-92660A	1	hardware bag	1550	2	1/2" USS washer (thick)
77-92660B	1	hardware bag	12UW	1	1/2" USS washer (thin)
Kit Part Number 77-92660A			Kit Part Number 01-60465		
Part Number	Qty.	Description	Part Number	Qty.	Description
77-92050A	1	hardware bag	716F5N	1	7/16" fine thread nut
01-60465	4	shock stud kit	716LW	1	7/16" lock washer
711027	1	tapered sleeve	12F5N	1	1/2" fine thread nut
01-60451	1	sleeve - 0.625" ID x 0.50" x 1.38" L	12LW	1	1/2" lock washer
			716UW	1	7/16" USS washer
Kit Part Number 77-92660B			Shock Stud	1	shock mounting stud
Part Number	Qty.	Description			
516X114X2UB	4	5/16" x 1-1/4" x 2" u-bolt			
516C5FLN	8	5/16" locking flange nut			

GM INSTALLATION

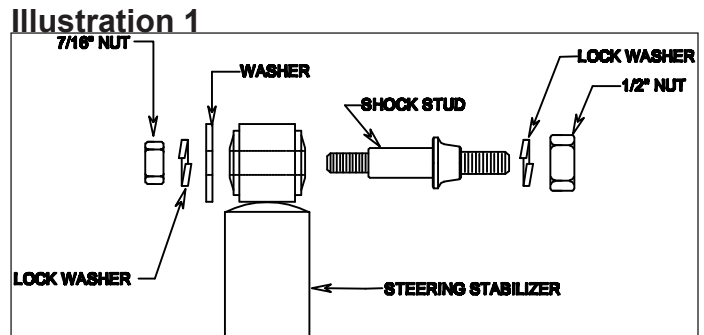
NOTE: Save all factory components and hardware for reuse, unless noted.

- 1) Make sure the wheels are facing straight forward. Remove the factory steering stabilizer.
- 2) Place the center mounting bracket (55-01-92660) on top of the axle, against the side of the differential housing where the axle tube goes into the housing. Attach using the supplied 7/16" u-bolts, washers, and Nyloc nuts. Snug but do not tighten at this time.

3) **[Illustration 1]** Install one of the stud mounting kits (01-60465) into each eye of one stabilizer cylinder.

4) Attach the body end of the cylinder to the bottom of the center mounting bracket (55-01-92660) using the supplied lock washer and nut.

5) Attach the tie rod bracket (55-02-92660) to the shaft end of the cylinder using the supplied lock washer and nut, so the cylinder will be on the top of the tie rod bracket when attached to the tie rod.



6) Extend the shaft end of the cylinder 4-1/2" and attach the tie rod bracket (55-02-92660) to the bottom of the tie rod using the supplied 5/16" u-bolts and flange nuts. Snug but do not tighten at this time.

7) Position the center mounting bracket (55-01-92660) above the tie rod where there will be no interference. Make sure the bracket is still against the differential and tighten u-bolts. (50) Position the tie rod bracket (55-02-92660) to where it will not interfere with the leaf springs and tighten u-bolts. (200 in-lbs)

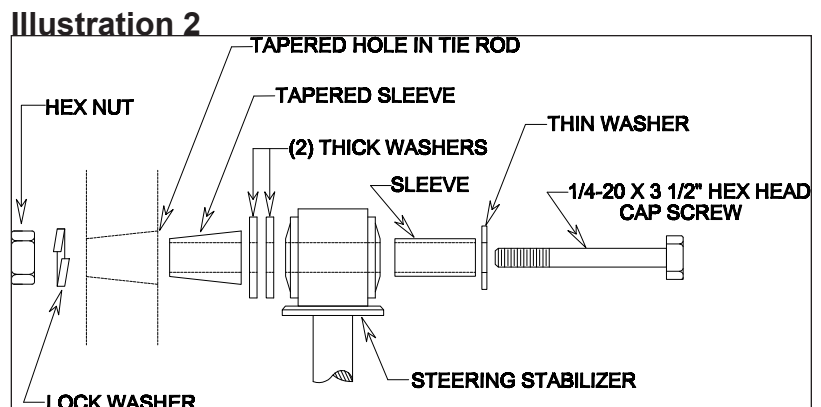
8) **[Illustration 1]** Install one of the stud mounting kits (01-60465) in the eye of the barrel end of the remaining steering stabilizer. Install the supplied sleeve into the eye of the shaft end of the cylinder.

9) Attach the body end of the cylinder to the factory location on the axle using the supplied lock washer and nut. Do not tighten at this time.

10) **[Illustration 2]** Extend the shaft end of the cylinder to the hole in the tie rod. Install the tapered sleeve into the tie rod and attach the cylinder with supplied bolt, washers, lock washers, and nut.

11) Tighten the hardware at the cylinder eyes. (75)

12) Cycle the steering from stop to stop making sure that no interference occurs. Recheck all hardware for tightness.



DODGE INSTALLATION

NOTE: Save all factory components and hardware for reuse, unless noted.

- 1) Make sure the wheels are facing straight forward. Remove the factory steering stabilizer.
- 2) Place the center mounting bracket (55-01-92660) on the bottom of the axle, against the side of the differential housing where the axle tube goes into the housing. Attach using the supplied 7/16" u-bolts, washers, and Nyloc nuts. Snug but do not tighten at this time.

3) **[Illustration 1]** Install one of the stud mounting kits (01-60465) into each eye of stabilizer cylinders. Attach the body end of each cylinder to the top of the center mounting bracket (55-01-92660) using the supplied lock washers and nut.

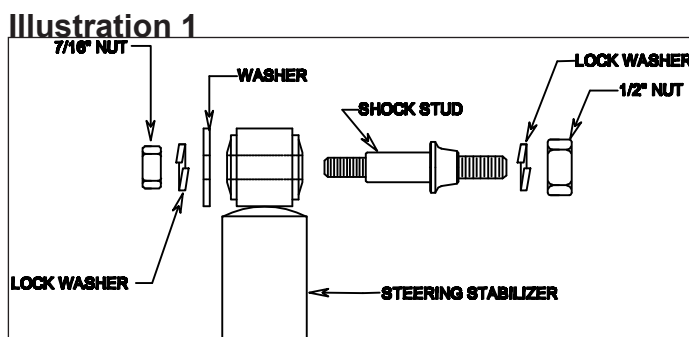
4) Attach the tie rod brackets (55-02-92660) to the shaft end of each cylinder using the supplied lock washers and nuts, so that the cylinder will be on top of the tie rod bracket when attached to the tie rod.

5) Extend the shaft end of the cylinders out 4-1/2" and attach the tie rod brackets (55-02-92660) to the bottom of the tie rod using the supplied 5/16" u-bolts, washers, and flange nuts. Do not tighten at this time.

6) Position the center mounting bracket (55-01-92660) below the tie rod where there will be no interference. Make sure the bracket is still against the differential and tighten u-bolts. (50) Position the tie rod brackets (55-02-92660) to where they will not interfere with the leaf springs and tighten u-bolts. (200 in-lbs)

7) Tighten the hardware at the cylinder eyes. (75)

8) Cycle the steering from stop to stop making sure that no interference occurs. Recheck all hardware for tightness.



FORD INSTALLATION

NOTE: Save all factory components and hardware for reuse, unless noted.

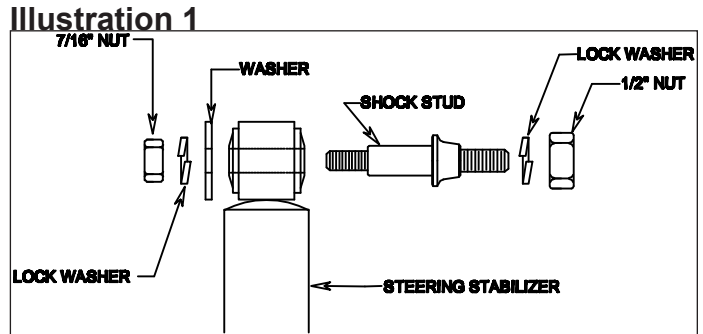
1) Make sure the wheels are facing straight forward.

NOTE: Vehicles from 1977 to 1979 equipped with the original steering stabilizer continue to step number 2, if not skip to step number 3.

2) Remove the factory steering stabilizer. Using a cutoff wheel or appropriate cutting tool, remove the metal locating strap from the tie rod. After the strap has been removed, grind or file the surface smooth.

3) Place the center mounting bracket (55-01-92660) on the top of the axle, against the side of the differential housing where the axle tube goes into the housing. Attach using the supplied 7/16" u-bolts, washers, and Nyloc nuts. Snug but do not tighten at this time.

4) **[Illustration 1]** Install one of the stud mounting kits (01-60465) into each eye of stabilizer cylinders. Attach the shaft end of each cylinder to the top of the center mounting bracket (55-01-92660) using the supplied lock washers and nut.



5) Attach the tie rod brackets (55-02-92660) to the body end of each cylinder using the supplied lock washers and nuts, so that the cylinder will be on the bottom of the tie rod bracket when attached to the tie rod.

6) Extend the body end of the cylinders out 4-1/2" and attach the tie rod brackets (55-02-92660) to the top of the tie rod using the supplied 5/16" u-bolts, washers, and flange nuts. Do not tighten at this time.

7) Position the center mounting bracket (55-01-92660) above the tie rod where there will be no interference. Make sure the crossmember will not come down and contact the bracket also make sure the bracket is still against the differential and tighten u-bolts. (50) Position the tie rod bracket (55-02-92660) to where it will not interfere with the leaf springs and tighten u-bolts. (200 in-lbs)

8) Tighten the hardware at the cylinder eyes. (75)

9) Cycle the steering from stop to stop making sure that no interference occurs. Recheck all hardware for tightness.