

8516 HYDRAULIC SHOP STOOL



- 10-1/2" - 12" (adjustable back)
- 28-1/2" - 33" (adjustable height)
- High-polished chrome finish
- Slip-resistant adjustable feet allow for leveling on uneven surface
- Vinyl padded adjustable backrest for ultimate comfort and support

Tools Needed:	Parts List:	Replacement Parts Available:																										
#2 Phillips Screwdriver 10mm Wrench 1/4" Dr. Ratchet 5mm Hex Bit Socket	<table border="0"> <tr> <td>1. Back Support</td> <td>9. Bolt M6 x 41</td> </tr> <tr> <td>2. Seat</td> <td>10. Connecting Plate</td> </tr> <tr> <td>3. "L" Shaped Support</td> <td>11. Locking Nut M6</td> </tr> <tr> <td>4. Hydraulic Cylinder</td> <td>12. Legs</td> </tr> <tr> <td>5. Bolt M6 x 40</td> <td>13. Locking Nut M6</td> </tr> <tr> <td>6. Connector</td> <td>14. Bolt M6 x 41</td> </tr> <tr> <td>7. Ring</td> <td>15. Ring</td> </tr> <tr> <td>8. M6 Locking Nut</td> <td></td> </tr> </table>	1. Back Support	9. Bolt M6 x 41	2. Seat	10. Connecting Plate	3. "L" Shaped Support	11. Locking Nut M6	4. Hydraulic Cylinder	12. Legs	5. Bolt M6 x 40	13. Locking Nut M6	6. Connector	14. Bolt M6 x 41	7. Ring	15. Ring	8. M6 Locking Nut		<table border="0"> <tr> <td>RS8516SEAT</td> <td>Replacement Seat Cushion</td> </tr> <tr> <td>RSHBSSL</td> <td>Plate with Seat Lever</td> </tr> <tr> <td>RSHBSBK</td> <td>Bolt Kit</td> </tr> <tr> <td>RSHBSHC</td> <td>Hydraulic Cylinder</td> </tr> <tr> <td>RSHBSFT</td> <td>Feet (Set of 4)</td> </tr> </table>	RS8516SEAT	Replacement Seat Cushion	RSHBSSL	Plate with Seat Lever	RSHBSBK	Bolt Kit	RSHBSHC	Hydraulic Cylinder	RSHBSFT	Feet (Set of 4)
1. Back Support	9. Bolt M6 x 41																											
2. Seat	10. Connecting Plate																											
3. "L" Shaped Support	11. Locking Nut M6																											
4. Hydraulic Cylinder	12. Legs																											
5. Bolt M6 x 40	13. Locking Nut M6																											
6. Connector	14. Bolt M6 x 41																											
7. Ring	15. Ring																											
8. M6 Locking Nut																												
RS8516SEAT	Replacement Seat Cushion																											
RSHBSSL	Plate with Seat Lever																											
RSHBSBK	Bolt Kit																											
RSHBSHC	Hydraulic Cylinder																											
RSHBSFT	Feet (Set of 4)																											
Bolt Kit:																												
4 – M6 x 40mm Hex Bolt 8 – M6 x 41mm Bolt 12 – M6 Nylon Nut																												

Assembly Instructions:

Step 1:

Place one of the legs (#12) into the aluminum bracket holder (#6) aligning the holes. Insert one of the M6x40mm hex bolts through the aligned holes, turn the aluminum bracket over so the threads of the bolt are facing up, then place the round metal disc (#11) over the single bolt. Fasten using the M6 nut. Do not completely fasten at this time. Continue the above steps until all four legs are mounted into the aluminum bracket.

Step 2:

Turn the bar stool over onto all four legs.

Step 3:

Place the large round support ring (#15) INSIDE all four legs aligning the holes. Insert one of the M6x41mm bolts through the aligned holes. Fasten using the M6 nut. Repeat this process with the remaining three legs. Do not completely fasten!

Step 4:

Place the smaller round support (#7) on the OUTSIDE of all four legs aligning the holes. Insert one of the M6x41mm bolts through the aligned holes. Fasten using the M6 nut. Repeat this process with the remaining three legs.

Step 5:

Completely tighten all bolts!

Step 6:

Insert the hydraulic cylinder (#4) into the aluminum bracket (#6). The orange portion of the cylinder will be facing up when inserted correctly.

Step 7:

Place the seat (#2) over the hydraulic cylinder. Sit on the seat to ensure that the metal plate is secure on the hydraulic cylinder.

Step 8:

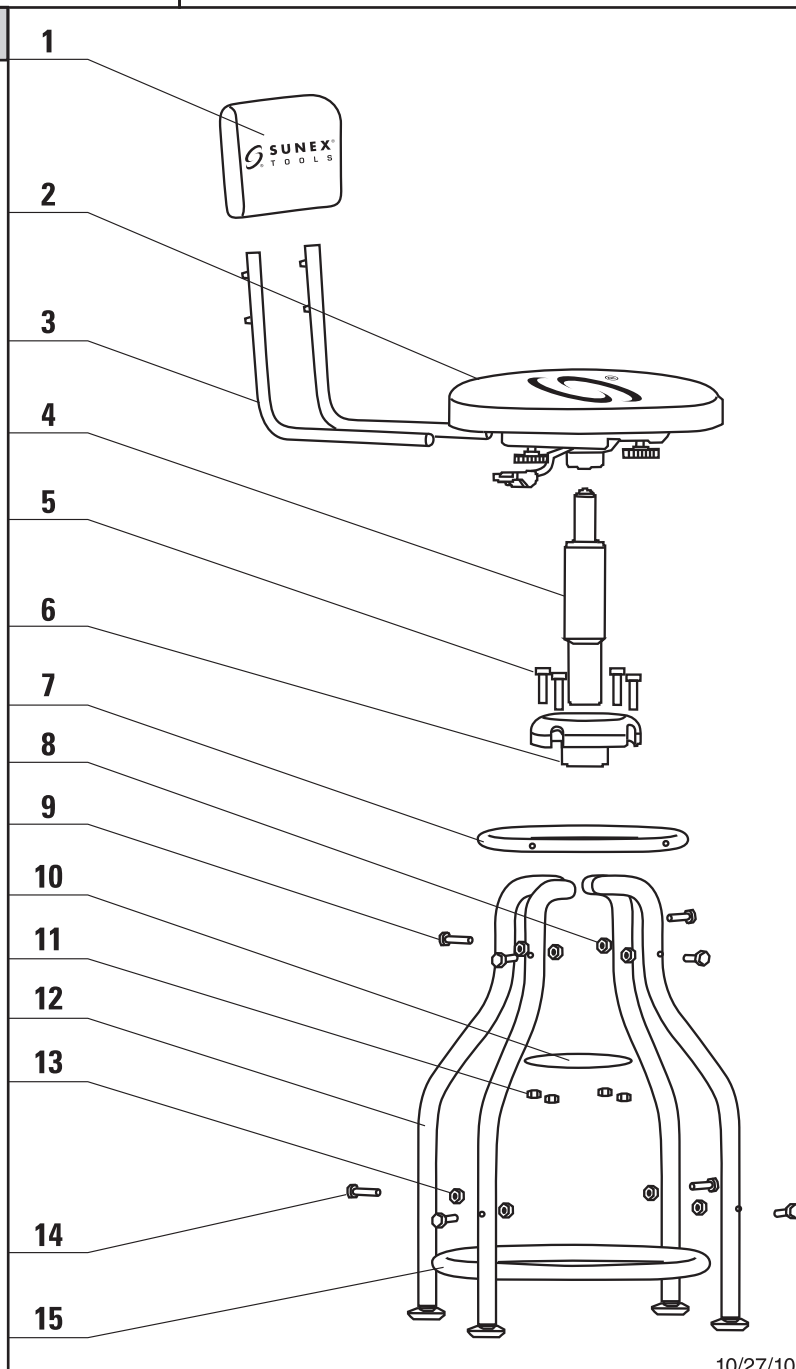
Place the "L" shaped back supports (#3) into the back of the seat. (Note: the back supports can only be inserted from one direction.) Also make sure the screws are completely loosened before inserting. Repeat the same step on the opposite side.

Step 9:

Place the cushioned back support (#1) over the "L" shaped supports. Note that the push buttons must be depressed before the back cushion will slide all the way down.

Step 10:

Go back and completely tighten all fasteners.



10/27/10