

MANUAL

CONTENTS:

Page	1.	Specifications
	2.	Warning Information
	3.	Setup, Operating Instructions and Preventive Maintenance
	4.	Preventive Maintenance, Troubleshooting and Warranty Information
	5.	Exploded View Drawing and Replacement Parts



SPECIFICATIONS

Capacity.....	300 lb
Low Height.....	11.3"
Max. Height	38.6"
Overall Chassis Width.....	24"
Overall Chassis Length	41"
Weight.....	143 lb

WARNING INFORMATION



This is the safety alert symbol. It is used to alert you to potential personal injury hazards. Obey all safety messages that follow this symbol to avoid possible injury or death.



WARNING: Indicates a hazardous situation which, if not avoided, could result in death or serious injury.



IMPORTANT: READ THESE INSTRUCTIONS BEFORE OPERATING

BEFORE USING THIS DEVICE, READ THIS MANUAL COMPLETELY AND THOROUGHLY, UNDERSTAND ITS OPERATING PROCEDURES, SAFETY WARNINGS AND MAINTENANCE REQUIREMENTS.

It is the responsibility of the owner to make sure all personnel read this manual prior to using the device. It is also the responsibility of the device owner to keep this manual intact and in a convenient location for all to see and read. If the manual or product labels are lost or not legible, contact Sunex for replacements. If the operator is not fluent in English, the product and safety instructions shall be read to and discussed with the operator in the operator's native language by the purchaser/owner or his designee, making sure that the operator comprehends its contents.




THE NATURE OF HAZARDOUS SITUATIONS

WARNING

The use of portable automotive lifting devices is subject to certain hazards that cannot be prevented by mechanical means, but only by the exercise of intelligence, care, and common sense. It is therefore essential to have owners and personnel involved in the use and operation of the equipment who are careful, competent, trained, and qualified in the safe operation of the equipment and its proper use. Examples of hazards are dropping, tipping or slipping of loads caused primarily by improperly securing loads, overloading, off-centered loads, use on other than hard level surfaces, and using equipment for a purpose for which it was not designed.

METHODS TO AVOID HAZARDOUS SITUATIONS

WARNING

-  Read, study, understand, and follow all instructions before operating this device.
-  Inspect the jack before each use. Do not use if damaged, altered, modified, in poor condition, leaking hydraulic fluid, or unstable due to loose or missing hardware or parts. Make corrections before using.
-  User and bystanders must wear eye protection that meets ANSI Z87.1 and OSHA standards.
- Use only on a hard, level surface.
- Adequately support the vehicle before starting repairs.
- Consult the vehicle manufacturer for the recommended lift and support locating points.
- Use of this product is limited to the removal, installation and transportation in the lowered position, of clutches and flywheels.
- Do not exceed rated capacity. Do not shock load.
- No alterations or modifications shall be made to this jack.
- Stay clear of jack's pinch points during raising and lowering operations.
- Always release load slowly.
- This product may contain one or more chemicals known to the State of California to cause cancer and birth defects or other reproductive harm. *Wash hands thoroughly after handling.*
- Failure to heed these markings may result in personal injury and/or property damage.

CONSEQUENCES OF NOT AVOIDING HAZARDOUS SITUATIONS

WARNING

Failure to read this manual completely and thoroughly, failure to understand its OPERATING INSTRUCTIONS, SAFETY WARNINGS, MAINTENANCE INSTRUCTIONS and comply with them, and failure to comply with the METHODS TO AVOID HAZARDOUS SITUATIONS could cause accidents resulting in serious or fatal personal injury and/or property damage.

SETUP

PLEASE REFER TO THE EXPLODED VIEW DRAWING IN THIS MANUAL IN ORDER TO IDENTIFY PARTS.

1. This clutch jack is designed to remove, install and transport (in the lowered position) 14" and 15-1/2" double disc clutches and/or flywheel assemblies.
2. Determine the clutch size to be worked on. Install the (#17) 1-3/4" diameter spline shaft in the (#1) shaft receiver if working on a 14" clutch and the (#2) 2" diameter spline shaft for a 15-1/2" clutch. Secure the spline shaft to the (#1) shaft receiver with the (#32) clip pin.
3. Install the (#25) handle in the (#26) handle receiver and turn the handle clockwise until it stops.
4. It may be necessary to bleed air out of the jack's hydraulic system if pumping feels spongy or the jack will not pump to maximum height without a load. Follow these steps to remove air from the hydraulic system:
 - a. Turn the jack's release knob in a clockwise rotation until tight. Now turn the knob counterclockwise two full revolutions.
 - b. Pump the handle 15 full incremental pump strokes without a load.
 - c. Turn the jack's release knob clockwise until tight and pump the jack to maximum height without a load.
 - d. Repeat steps a. through c. until all air is purged from the system.

OPERATING INSTRUCTIONS



This is the safety alert symbol used for the **OPERATING INSTRUCTIONS** section of this manual to alert you to potential personal injury hazards. Obey all instructions to avoid possible injury or death.

1. Assess the work to be done and determine how much clearance is required under the vehicle in order to roll the jack with clutch under the vehicle. Lift the vehicle to the desired work height in accordance with the vehicle manufacturer's recommended procedure and immediately after lifting the vehicle, support it with a match pair of jack stands that have the appropriate capacity rating. Make sure the setup is stable. Determine which spline shaft is required to do the job and install it in the shaft receiver.
2. Position the tilting saddle so the spline shaft is vertical to the floor. Roll the jack under the vehicle and in line with receiving the clutch. If there is not enough clearance it may be necessary to lift the vehicle's front end higher and readjust the jack stand columns accordingly.
3. Once the jack is positioned below the clutch, rotate the tilting saddle so the spline shaft is parallel with the floor. Close the release valve by turning it clockwise until it stops and proceed to pump the jack slowly so the spline shaft is in line with the clutch splines. Adjust the angle of the spline shaft so that it matches the angle of the clutch assembly by rotating the saddle adjustment screw.
4. Match the free end of the spline shaft with the opening of the clutch assembly by pumping and moving the jack in position. Rotate the spline shaft until the splines match with the splines in the clutch assembly. It may be necessary to adjust the spline angle so the clutch assembly will slide right on to the jack's spline shaft. Unbolt the clutch from the flywheel and slide the clutch onto the jack's spline shaft.
5. Pull the clutch jack away from the flywheel and slowly turn the jack's release valve knob in a counterclockwise direction until the clutch is lowered all the way down. Now position the clutch so the jack's spline shaft is vertical to the floor. The jack and clutch should provide a low enough profile to roll them from underneath the vehicle.
6. Follow the vehicle manufacturer's clutch installation procedure and these operating instructions in the proper order to install the clutch.

PREVENTATIVE MAINTENANCE



This is the safety alert symbol used for the **PREVENTATIVE MAINTENANCE** section of this manual to alert you to potential personal injury hazards. Obey all instructions to avoid possible injury or death.

1. Always store the jack in a well protected area where it will not be exposed to inclement weather, corrosive vapors, abrasive dust, or any other harmful elements. The jack must be cleaned of water, snow, sand, grit, oil, grease or other foreign matter before using.
2. The jack must be lubricated periodically in order to prevent premature wearing of parts. A general purpose grease must be applied to the threads on the extension screw. Do not lubricate any portion of the lift saddle and make sure the saddle is free from grease, any kind of lubricant, or debris before using the jack. Jacks found to be defective due to worn parts resulting from inadequate or no lubrication are not eligible for warranty consideration.
3. It should not be necessary to refill or top off the reservoir with hydraulic fluid unless there is an external leak. An external leak requires immediate repair which must be performed in a dirt-free environment by qualified hydraulic repair personnel who are familiar with this equipment. Authorized Service Centers are recommended. **IMPORTANT:** In order to prevent seal damage and jack failure, never use alcohol, hydraulic brake fluid, or transmission oil in the jack. Use hydraulic jack oil, Chevron Hydraulic Oil AW ISO 32 or its equivalent Unocal Unax AW 150.
4. Every jack owner is responsible for keeping the jack label clean and readable. Use a mild soap solution to wash external surfaces of the jack but not any moving hydraulic components.

OWNER'S MANUAL

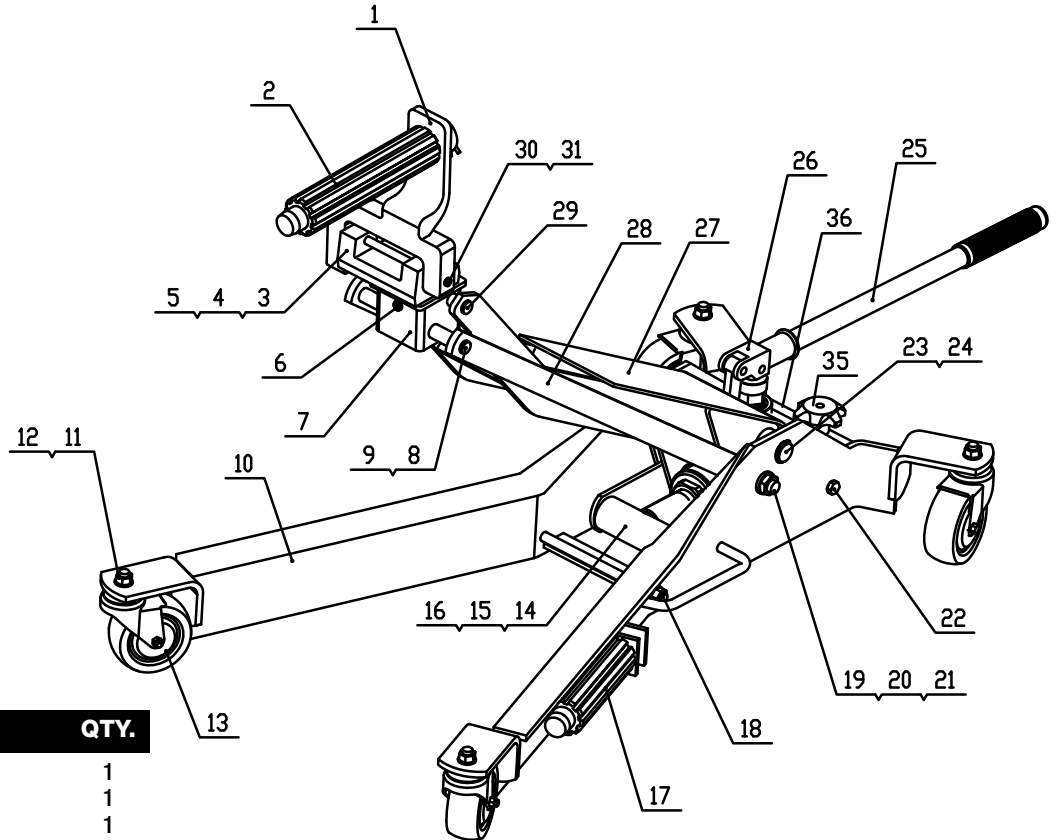
PREVENTATIVE MAINTENANCE (cont.)

5. Inspect the jack before each use. Do not use the jack if any component is cracked, broken, bent, shows sign of damage or leaks hydraulic fluid. Do not use the jack if it has loose or missing hardware or components, or is modified in any way. Take corrective action before using the jack again.
6. Do not attempt to make any hydraulic repairs unless you are a qualified hydraulic repair person that is familiar with this equipment.

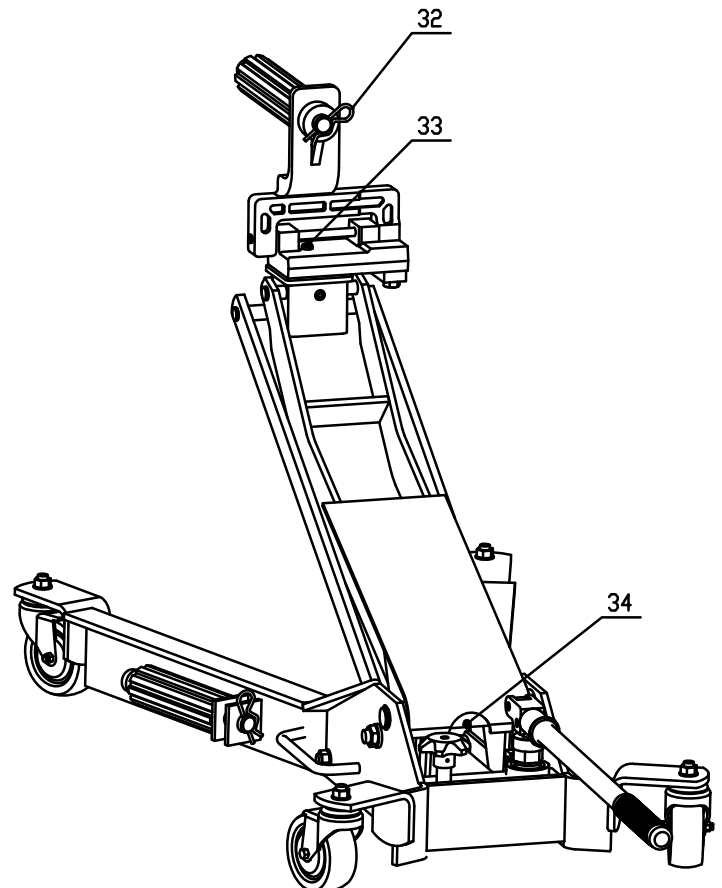
TROUBLESHOOTING

PROBLEM	ACTION
1. Unit will not lift rated load.	Purge air from hydraulic system by following procedure under SETUP.
2. Unit will not sustain rated load or feels "spongy" under rated load.	Purge air from hydraulic system as above.
3. Unit will not lift to full height.	Purge air from hydraulic system as above or check oil level in reservoir.
4. Unit still does not operate.	Contact Sunex authorized hydraulic service center.

**PARTS LIST &
 DRAWING**



REF. #	PART #	DESCRIPTION	QTY.
1		Shaft Receiver	1
2	RS779007	2" Spline Shaft	1
3	RS779001	Saddle Assembly (incl 1,2,3,4,5,6,7,8 & 9)	1
4		Spring	1
5		Steel Ball (8)	1
6		Screw (M6x18)	2
7		Saddle Base	1
8		Guide Arm Bar	1
9		Snap Ring	2
10		Frame	1
11		Nut	6
12		Washer	6
13	RS779002	Swivel Caster Assembly (incl 11,12 & 13)	4
14		Trunion	1
15		Snap Ring	2
16		Trunion Arm	2
17	RS779003	1-3/4" Spline Shaft	1
18		Spacer Pin	1
19		Guide Arm Bolt	2
20		Nut	2
21		Washer	2
22		Screw (M12x40)	2
23		Lift Arm Pivot Pin	1
24		Snap Ring	2
25	RS779004	Handle	1
26		Handle Receiver	1
27		Lift Arm	1
28		Guide Arm	2
29		Shaft	1
30		Shaft	1
31		Snap Ring	2
32	RS779005	Clip Pin	2
33		Screw (M8x20)	1
34		Grease Zerk Fitting	1
35	RS779006	Release Knob Assembly	1
not shown	RS7790HPU	Complete Hydraulic Power Unit	1
not shown	RS7790PLK	Product Label Kit	1



Only numbers identified by Part No. are available separately.