

## MANUAL

### CONTENTS:

Page	1	Specifications
	2	Warning Information
	3	Setup Instructions
	4	Operating and Preventative Maintenance
	5	Parts list and Drawing



## SPECIFICATIONS

Capacity.....	Up to 40 gallon empty fuel tank
Overall Length .....	24-1/2"
Overall Width .....	15"
Overall Height .....	7-3/16"
Tie Down Length .....	8'

Saddle Adjustments	
Length .....	24-1/2" to 39-3/4"
Width .....	15" to 19"
Height .....	7-3/16" to 11"
Shipping Weight .....	52 lbs.

## WARNING INFORMATION



This is the safety alert symbol. It is used to alert you to potential personal injury hazards. Obey all safety messages that follow this symbol to avoid possible injury or death.



**WARNING:** Indicates a hazardous situation which, if not avoided, could result in death or serious injury.



### **IMPORTANT: READ THESE INSTRUCTIONS BEFORE OPERATING**

BEFORE USING THIS DEVICE, READ THIS MANUAL COMPLETELY AND THOROUGHLY, UNDERSTAND ITS OPERATING PROCEDURES, SAFETY WARNINGS AND MAINTENANCE REQUIREMENTS.

It is the responsibility of the owner to make sure all personnel read this manual prior to using the device. It is also the responsibility of the device owner to keep this manual intact and in a convenient location for all to see and read. If the manual or product labels are lost or not legible, contact Sunex for replacements. If the operator is not fluent in English, the product and safety instructions shall be read to and discussed with the operator in the operator's native language by the purchaser/owner or his designee, making sure that the operator comprehends its contents.

### **THE NATURE OF HAZARDOUS SITUATIONS**



The use of attachments, adapters, and accessories with portable automotive lifting devices are subject to certain hazards that cannot be prevented by mechanical means, but only by the exercise of intelligence, care, and common sense. It is therefore essential to have owners and personnel involved in the use and operation of the equipment who are careful, competent, trained, and qualified in the safe operation of the equipment and its proper use. Examples of hazards are fuel tank explosion or fire due to fuel still in tank and in close proximity to smoking, open flames, electrical sparks, etc. Additional hazards are dropping, tipping or slipping of loads caused primarily by improperly securing loads, overloading, off-centered loads, use on other than hard level surfaces, and using equipment for a purpose for which it was not designed.

### **METHODS TO AVOID HAZARDOUS SITUATIONS**



- Study, understand and follow all instructions before operating this device.
- Read the appropriate vehicle service manual for instructions and procedures on fuel tank removal and installation.
- Wear eye protection that meets ANSI Z87.1 and OSHA standards.
- Always have an approved fire extinguisher accessible for immediate use. Never use this device near people smoking, open flames, heat sources or spark.
- Always drain the fuel tank into a grounded storage container before removal or installation.
- Always use ground wires provided in accordance with instructions in the owner's manual.
- Make sure the fuel tank is centered and balanced on the adapter and jack before removal or installation.
- Always secure the fuel tank to this device with the tie-down straps provided before moving the fuel tank.
- The fuel tank may only be transported when the jack has been retracted to its lowest position.
- This product contains one or more chemicals known to the State of California to cause cancer and birth defects or other reproductive harm. *Wash hands thoroughly after handling.*
- Failure to heed these warnings may result in serious or fatal personal injury and/or property damage.

### **CONSEQUENCES OF NOT AVOIDING HAZARDOUS SITUATIONS**



Failure to read this manual completely and thoroughly, failure to understand its OPERATING INSTRUCTIONS, SAFETY WARNINGS, MAINTENANCE INSTRUCTIONS and comply with them, and failure to comply with the METHODS TO AVOID HAZARDOUS SITUATIONS could cause accidents resulting in serious or fatal personal injury and/or property damage.

## OPERATIONS MANUAL

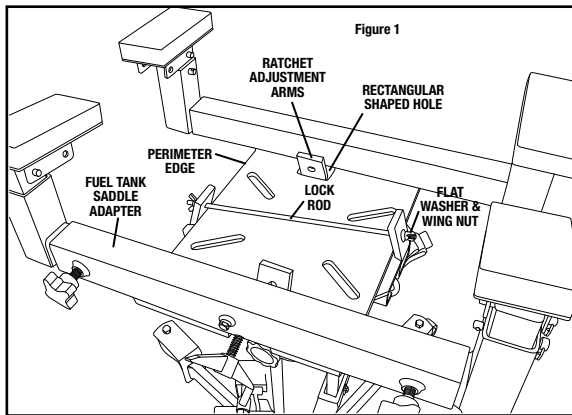
### FUEL TANK SADDLE ADAPTOR SETUP

PLEASE REFER TO THE EXPLODED VIEW DRAWING IN THIS MANUAL IN ORDER TO IDENTIFY PARTS AND PROPER ASSEMBLY CONFIGURATION.

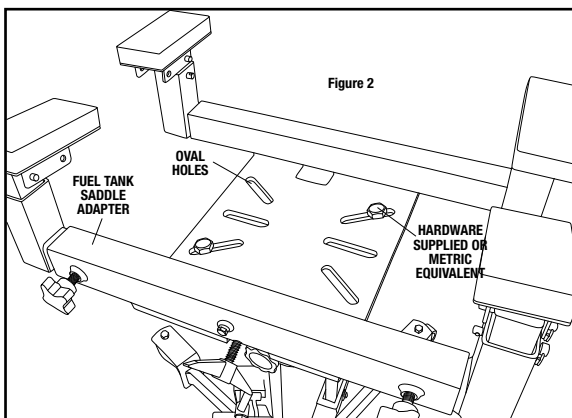
1. Install the #13 arm assemblies in the #12 base assembly as shown in the exploded view drawing on page 5. Secure them in place by screwing in the #11 locking knobs as shown in the drawing.
2. Install the #15 height adjustment tubes in the #13 arm assemblies and secure them to the arm assemblies at the desired height with the #14 detent pins.
3. The #16 support pad assemblies have two mounting locations which enable the pads to be located in towards the center of the adapter or further away from the center of the adapter depending on the fuel tank size and configuration. Secure the #16 support pad assemblies to the top holes of the #15 height adjustment tubes with the #14 detent pins.
4. Feed the #7 ground screw through the #4 flat washer, the electrical connector ends of both #2 ground wires, and through #5 hex nut, and tighten the #7 ground screw in the #12 base assembly. It may be necessary to tighten the #5 nut up against the electrical connectors to ensure the connectors are not loose.

### INSTALLING THE FUEL TANK SADDLE ADAPTER ON UNDER HOIST TRANSMISSION JACKS

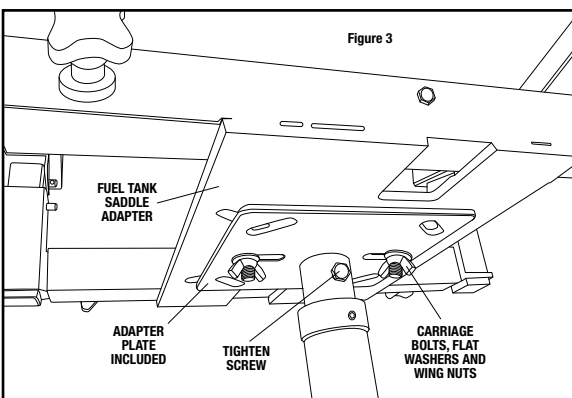
This saddle adapter is designed to fit on three types of transmission jack saddles:



**TYPE 1** - The Sunex model 7795 and 7796 under hoist transmission jacks are equipped with the popular ratchet adjustment arms in their saddles. See figure 1. The center of the saddle adapter has two rectangular shaped holes to accept two of the ratchet arms, and the opposite ratchet arms will fit against the perimeter edge of the center portion of the saddle adapter. Center the saddle adapter on the jack's saddle and tighten the jack's ratchet arms against the adapter. The #6 lock rod can be fed through the holes at the top of two of the ratchet arms and secured with the #4 flat washers and #3 wing nuts as shown in figure 1. This secures the saddle adapter to the jack's saddle.



**TYPE 2** - Some transmission jacks are equipped with flat saddles with arms that can be temporarily removed. See Figure 2. The saddle adapter can be placed on the top of the jack's flat saddle and centered in a position where the oval holes in the saddle adapter align with two hole locations in the jack's saddle. The two hole locations should be directly across from each other so the jack's saddle and saddle adapter can be secured together with the two #8 carriage bolts, #17 flat washers and #18 wing nuts provided. If the provided hardware will not work, use grade 5 hardware or the metric equivalent to secure the two plates together.



**TYPE 3** - Some jacks will have to have their stock saddles removed and replaced with the #10 adapter plate included with the saddle adapter. The adapter plate is secured to the jack's ram by tightening the #9 screw at the base of the adapter plate. See Figure 3. Follow the assembly instructions for TYPE 2 jacks to secure the saddle adapter to the adapter plate.

## OPERATING INSTRUCTIONS



This is the safety alert symbol used for the OPERATING INSTRUCTIONS section of this manual to alert you to potential personal injury hazards. Obey all instructions to avoid possible injury or death.

1. Prepare the fuel tank for removal according to the appropriate vehicle service manual instructions and procedure. Drain the fuel tank into a grounded storage container.
2. Pump the jack up so the fuel tank saddle adapter is close but not touching the vehicle's fuel tank. Attach the alligator clamp at the end of one ground wire to the transmission jack. Attach the alligator clamp at the end of the other ground wire to the lift that is supporting the vehicle. **IMPORTANT: PROPER GROUNDING IS ACCOMPLISHED WITH THE ALLIGATOR CLAMPS AFFIXED TO NON-PAINTED OR NON-COATED PARTS. THE LIFT SUPPORTING THE VEHICLE MUST ALSO BE GROUNDED TO THE EARTH.**
3. Adjust the saddle adapter's arm assemblies, height adjustment tubes and support pad assemblies to fit the fuel tank configuration, and then center and balance the tank on the saddle adapter.
4. Raise the jack so the saddle adapter makes contact with the fuel tank, and make final adjustments. Make sure the locking knobs are tight and detent pins are inserted completely through their corresponding tubes.
5. Secure the fuel tank to the saddle adapter by wrapping the two tie-down straps completely around the tank and saddle. Insert the tie-down straps through their buckles and pull them tight.
6. Make sure the tank is free to be lowered all the way down and there are not obstructions. The jack must be lowered all the way before the tank can be transported.

## PREVENTATIVE MAINTENANCE



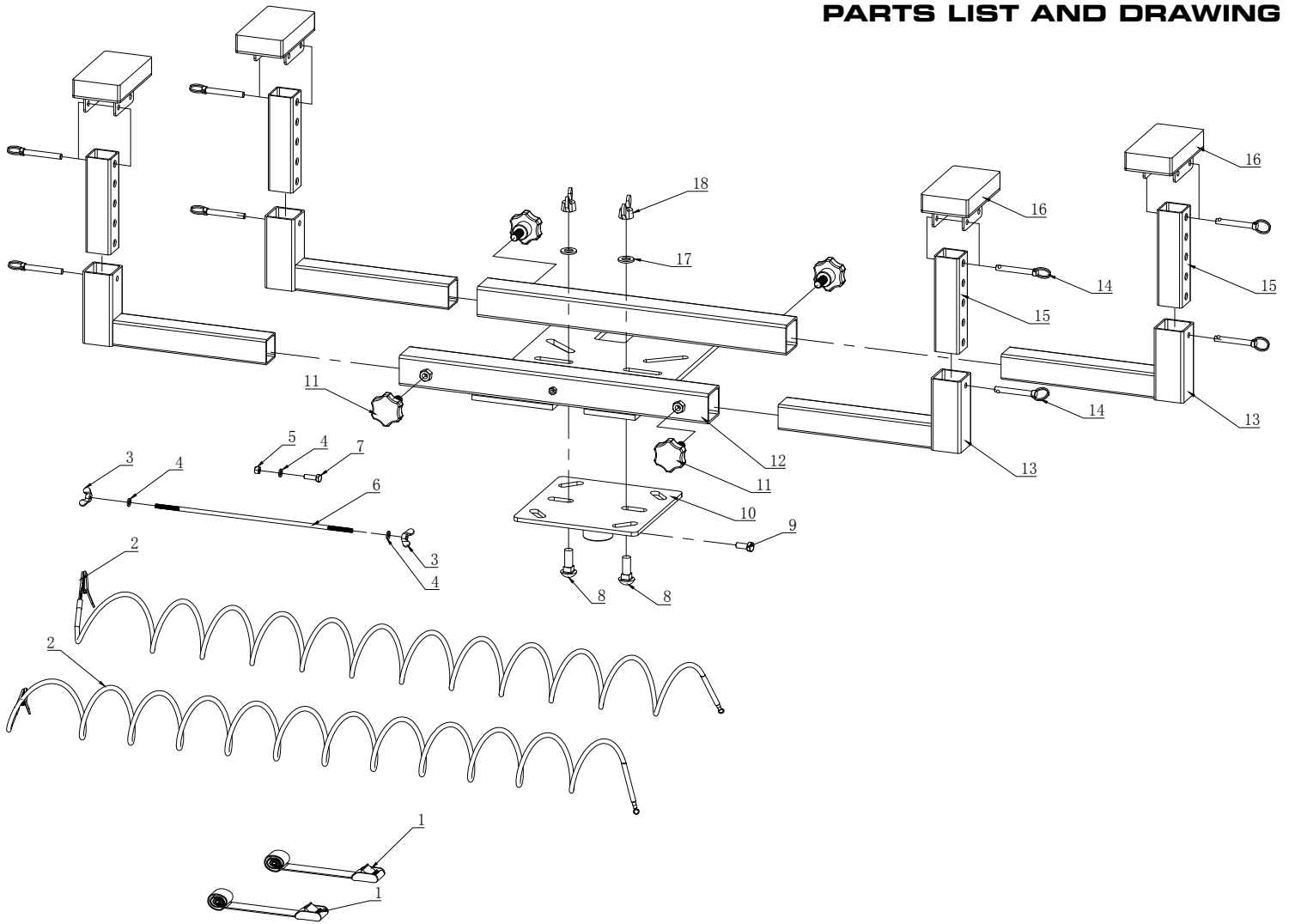
This is the safety alert symbol used for the PREVENTATIVE MAINTENANCE section of this manual to alert you to potential personal injury hazards. Obey all instructions to avoid possible injury or death.

1. Always store the saddle adapter in a well protected area where it will not be exposed to inclement weather, corrosive vapors, abrasive dust, or any other harmful elements. The adapter must be cleaned of water, snow, sand or grit before using.
2. Every saddle adapter owner is responsible for keeping the adapter labels clean and readable. Use a mild soap solution to wash external surfaces of the adapter.
3. Do not attempt to make any repairs unless you are a qualified repair person that is familiar with this equipment. Do not use the saddle adapter if it is damaged, cracked, broken or missing parts. Take it out of service until replaced or properly repaired by an authorized service center.

# SUNEX HD<sup>®</sup>

MODEL 7706  
CAPACITY: UP TO 40 GALLON  
EMPTY FUEL TANK  
SADDLE ADAPTER

## PARTS LIST AND DRAWING



Ref. No.	Part No.	Description	Qty.
1	RS770601	Tie Down	2
2	RS770602	Ground Wire	2
3	*	Wing Nut M6	2
4	*	Flat Washer	3
5	*	Hex Nut M6	1
6	*	Lock Rod	1
7	*	Ground Screw M6	1
8	*	Carriage Bolt M12	2
9	*	Screw M8	1
10	RS770403	Adapter Plate	1
11	RS770611	Locking Knob	4
12		Base Assembly	1
13		Arm Assembly	4
14	*	Detent Pin	8
15		Height Adjustment Tube	4
16	RS770616	Support Pad Assembly	4
17	*	Flat Washer	2
18	*	Wing Nut M12	2

\* Available in bolt kit, RS7706BK. Only Ref No's identified by Part No. are available separately.

Discover other car jacks on our website.