

## WARNING INFORMATION



This is the safety alert symbol. It is used to alert you to potential personal injury hazards. Obey all safety messages that follow this symbol to avoid possible injury or death.



**WARNING:** Indicates a hazardous situation which, if not avoided, could result in death or serious injury.



## IMPORTANT: READ THESE INSTRUCTIONS BEFORE OPERATING

BEFORE USING THESE STANDS, READ THIS MANUAL COMPLETELY AND THOROUGHLY, UNDERSTAND ITS OPERATING PROCEDURES, SAFETY WARNINGS AND MAINTENANCE REQUIREMENTS.

It is the responsibility of the owner to make sure all personnel read this manual prior to using these stands. It is also the responsibility of the stand owner to keep this manual intact and in a convenient location for all to see and read. If the manual or product labels are lost or not legible, contact Sunex for replacements. If the operator is not fluent in English, the product and safety instructions shall be read to and discussed with the operator in the operator's native language by the purchaser/owner or his designee, making sure that the operator comprehends its contents.

## THE NATURE OF HAZARDOUS SITUATIONS

### WARNING

The use of wheel dollies is subject to certain hazards that cannot be prevented by mechanical means, but only by the exercise of intelligence, care, and common sense. It is essential to have personnel involved in the use and operation of the dolly who are careful, competent, trained, and qualified in the safe operation of the dolly and its proper use when working on wheel and tire assemblies. Examples of hazards are dropping or slipping of load, caused by improperly securing loads, overloading, off-centered loads, and improper setups.

## METHODS TO AVOID HAZARDOUS SITUATIONS

### WARNING



- Read, study, understand & follow all instructions before using.
- Inspect the Wheel Dolly before each use. Do not use if damaged, altered, modified, in poor condition or unstable due to loose or missing components. Make corrections before using.
- User and bystanders must wear eye protection that meets ANSI Z87.1 and OSHA standards.
- Do not exceed rated capacity.
- Use only on a hard, level, dry concrete surface free from expansion joints and all obstructions.
- Before moving, lower the load to the lowest possible point.
- Apply load as close to the verticle portion of the lifting member as possible.
- Before moving the load, ensure the load is centered and secured with a load-restraint device.
- No alterations shall be made to this device.
- This product may contain one or more chemicals known to the State of California to cause cancer and birth defects or other reproductive harm. *Wash hands thoroughly after handling.*
- Failure to heed these warnings may result in fatal personal injury and/or property damage.

## CONSEQUENCES OF NOT AVOIDING HAZARDOUS SITUATIONS

### WARNING

Failure to read this manual completely and thoroughly, failure to understand its OPERATING INSTRUCTIONS, SAFETY WARNINGS, MAINTENANCE INSTRUCTIONS and comply with them, and failure to comply with the METHODS TO AVOID HAZARDOUS SITUATIONS could cause accidents resulting in serious or fatal personal injury and/or property damage.

## INSPECTION



This is the safety alert symbol used for the INSPECTION section of this manual to alert you to potential personal injury hazards. Obey all instructions to avoid possible injury.

Visual inspection should be made before each use of the hydraulic wheel dolly, checking for leaking hydraulic fluid and damaged, loose or missing parts. Any wheel dolly which appears to be damaged in any way, found to be badly worn or operated abnormally **MUST BE REMOVED FROM SERVICE**. If the wheel dolly is accidentally subjected to an abnormal load or shock, it must be inspected by a manufacturer's authorized repair facility immediately. It is recommended that an annual inspection of the wheel dolly be made by a manufacturer's authorized repair facility and that any defective parts, decals, or warning labels be replaced with manufacturer's specified parts. A list of authorized repair facilities is available from the manufacturer.

---

## ASSEMBLY INSTRUCTIONS



This is the safety alert symbol used for the ASSEMBLY INSTRUCTIONS section of this manual to alert you to potential personal injury hazards. Obey all instructions to avoid possible injury.

### PLEASE REFER TO THE EXPLODED VIEW DRAWING IN THIS MANUAL IN ORDER TO IDENTIFY PARTS.

1. Secure the swivel caster (#16) to the flange at the bottom of the slide weldment (#23) with the bolts (#14) and nuts (#24). Insert the slide weldment through the bottom of the square receiver in the base upright assembly (#2).
2. Slide the bearing (#20) on the Acme rod (#22). Secure the crank handle (#18) on the Acme rod (#22) by aligning the holes in both and tightening the bolt (#19) and locking nut (#21). Feed the Acme rod (#22) through the top of the square receiver of the base upright assembly (#2) and thread it in the slide weldment (#23).
3. Install the base frame assembly (#1) in the base upright assembly (#2) so the mounting holes line up and secure both assemblies together using the bolts (#10), washers (#11) and nuts (#12).
4. Secure the swivel caster wheels (#15) to the base frame assembly (#1) with the bolts (#14) and spring washers (#13).
5. Install the bottle jack (#3) in the base upright assembly (#2) as shown in the exploded view drawing in this manual.
6. Secure the lifting straps (#6) to the rotating fingers of the base frame assembly (#1) with the bolts (#7) and nuts (#8). Secure the opposite ends of the lifting straps (#6) to the lift bridge of the base upright assembly (#2) with the same hardware. It may be necessary to pump the jack up to align the holes in the straps with holes in the base frame assembly and base upright assembly.
7. Secure a link of the chain (#9) in one of the slots in the base upright assembly (#2). Install the handle caps (#4) on the ends of the base upright assembly grab handles.
8. Sometimes air gets trapped in the hydraulic bottle jack causing the jack ram to extend in sporadic increments instead of one smooth extension.

### PURGING AIR FROM THE MANUAL PUMP SYSTEM

- a. Open the release valve by engaging the handle (#5) with the valve on the bottle jack (#3). The valve is closed when rotated clockwise (to the right) all the way until it stops. Rotate the valve counterclockwise two full rotations from its closed position.
- b. Now install the handle (#5) in the pump linkage of the bottle jack (#3) and pump the jack ten full strokes.
- c. Close the release valve by turning it in a clockwise direction until tight.
- d. Repeat steps "a" through "d" until all air is purged from system.

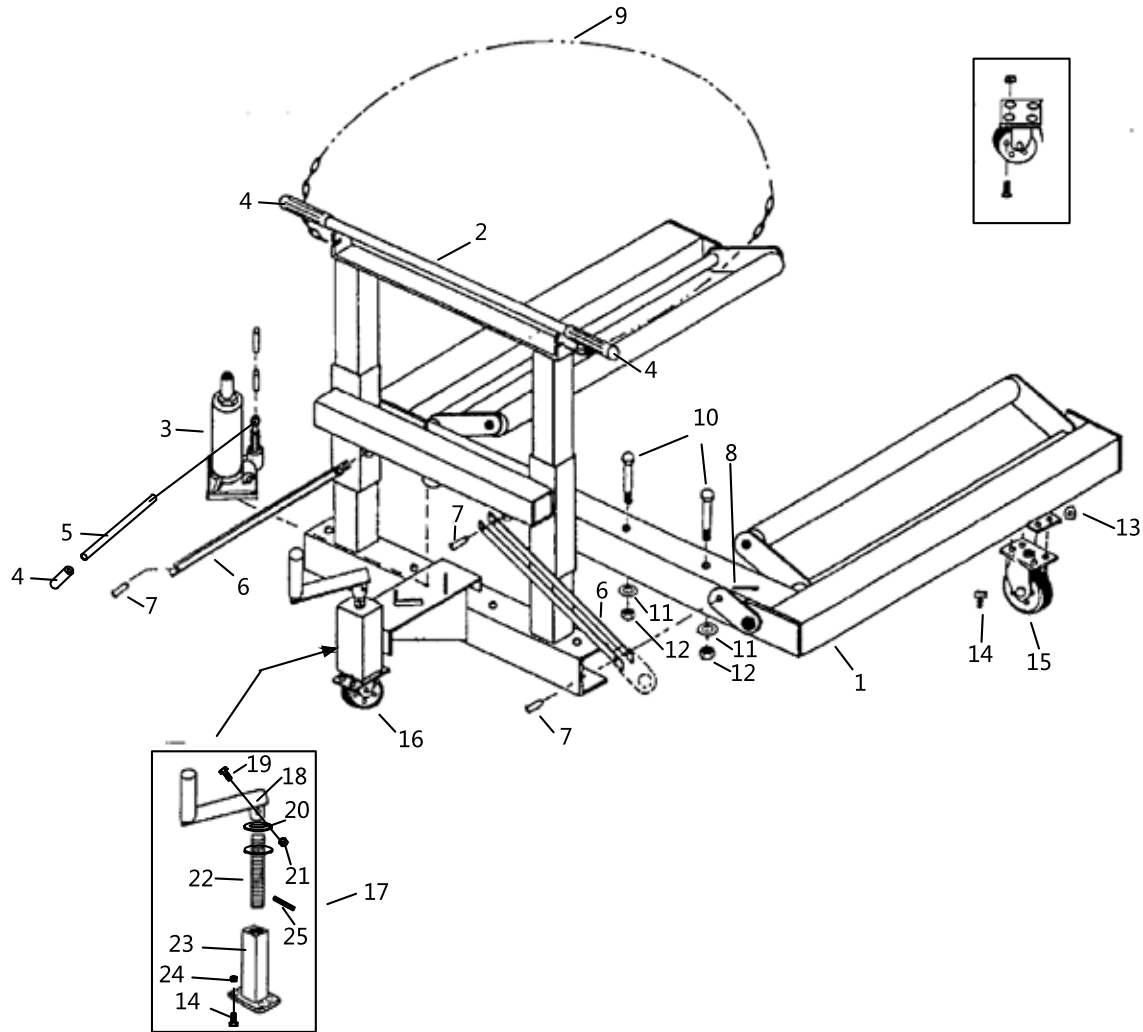
---

## OPERATING INSTRUCTIONS



This is the safety alert symbol used for the OPERATING INSTRUCTIONS section of this manual to alert you to potential personal injury hazards. Obey all instructions to avoid possible injury.

1. A hydraulic bottle jack is used on the wheel dolly. Become familiar with the operation of the bottle jack. The jack's release valve must be turned in a clockwise direction until tight before the jack can be pumped. Turning the release valve very slowly in a counterclockwise direction lowers the load in a safe controlled manner. There should never be a reason to turn the release valve in a counterclockwise direction more than two full turns.
2. Bottle jacks are used to lift tire and wheel combinations that are supported by the lift arms. Raise the vehicle with a jack so the wheels to be removed clear the ground. Support the vehicle with jack stands. Make sure vehicle is properly blocked. It may be necessary to loosen the lug nuts before lifting.
3. This dolly is equipped with a screw adjustable rear caster that is manually raised or lowered to match the spindle angle.
4. After the vehicle is raised and correctly blocked, push the wheel dolly in towards the tire/wheel combination to be lifted. The wheel dolly lift arms should straddle the tire, and the sidewall of the tire should be as close as possible to the vertical portion of the lift member. Raise the lift arms to meet the tire(s) and adjust the lift arm angles so the arms are in full contact with the tire(s).
5. Secure the tire/wheel combination to the dolly with the safety restraint chain provided. Wrap the chain around the tire and secure the chain hook or chain loop to the dolly. Remove the lug nuts.
6. Continue to lift the tire/wheel combination until the entire weight is supported by the dolly lift arms. Back the dolly away to remove the tire/wheel combination.
7. When mounting wheels, load the wheels on the dolly and secure them to the dolly with the chain. Maneuver the dolly into alignment with the axle.
8. Carefully slide the wheels onto the axle by pushing the dolly towards the vehicle. It might be necessary to rotate the wheels so their hole pattern will line up with the mounting studs.
9. Secure the wheel to the hub in accordance with the vehicle manufacturer's directions.



Index#	Part#	Description	Qty.
1		Base Frame Assembly	1
2		Base Upright Assembly	1
3	RS150103	Bottle Jack	1
4		Handle Cap	3
5		Handle	1
6	RS150107	Lifting Straps	4
7	*	Bolt (M8x30)	4
8	*	Nut (M8)	4
9		Chain	1
10	*	Bolt (M12x110)	5
11	*	Washer (12)	5
12	*	Nut (M12)	5
13	*	Spring Washer (8)	8

14	*	Bolt (M8x16)	12
15	RS150115	3.5" Swivel Caster	2
16	RS150116	3" Swivel Caster	1
17	RS150117	Crank Assembly	1
18		Crank Handle	1
19	*	Bolt (M6x40)	1
20		Bearing	1
21	*	Locking Nut (M6)	1
22		Acme Rod	1
23		Slide Weldment	1
24	*	Locking Nut (M8)	4
25	*	Pin (4x25)	1
not shown	RS1501AHK	Hardware Kit *	1
not shown	RS1501APLK	Product Label Kit	1

## PREVENTATIVE MAINTENANCE



This is the safety alert symbol used for the PREVENTATIVE MAINTENANCE section of this manual to alert you to potential personal injury hazards. Obey all instructions to avoid possible injury.

1. Always store the wheel dolly in a well protected area where it will not be exposed to inclement weather, corrosive vapors, abrasive dust, or any other harmful elements. The wheel dolly must be cleaned of water, snow, sand, grit, oil, grease or other foreign matter before using.
2. Lubricate moving parts once a month with a general purpose grease, particularly the rear caster adjustment thread.
3. It should not be necessary to refill or top off the jack's reservoir with hydraulic fluid unless there is an external leak. An external leak requires immediate repair which must be performed in a dirt-free environment by qualified hydraulic repair personnel who are familiar with this equipment. Authorized Service Centers are recommended. **IMPORTANT:** In order to prevent seal damage and hydraulic failure, never use alcohol, hydraulic brake fluid, or transmission oil in the hydraulic system. Use hydraulic jack oil, Chevron Hydraulic Oil AW ISO 32 or its equivalent Unocal Unax AW 150.
4. Every wheel dolly owner is responsible for keeping the dolly label clean and readable. Use a mild soap solution to wash external surfaces of the dolly but not any moving hydraulic components. Contact Sunex for a replacement label if your dolly label is unreadable.
5. Inspect the wheel dolly before each use. Do not use the dolly if any component is cracked, broken, bent, shows sign of damage, or leaks hydraulic fluid. Do not use the dolly if it has loose or missing hardware or components, or is modified in any way. Take corrective action before using the dolly again.
6. Do not attempt to make any hydraulic repairs unless you are a qualified hydraulic repair person that is familiar with this equipment.