



For ALL Your Air Suspension Needs!!!

Lincoln Continental '84-'87

Lincoln Mark 7 '84-'92



36F-15-F

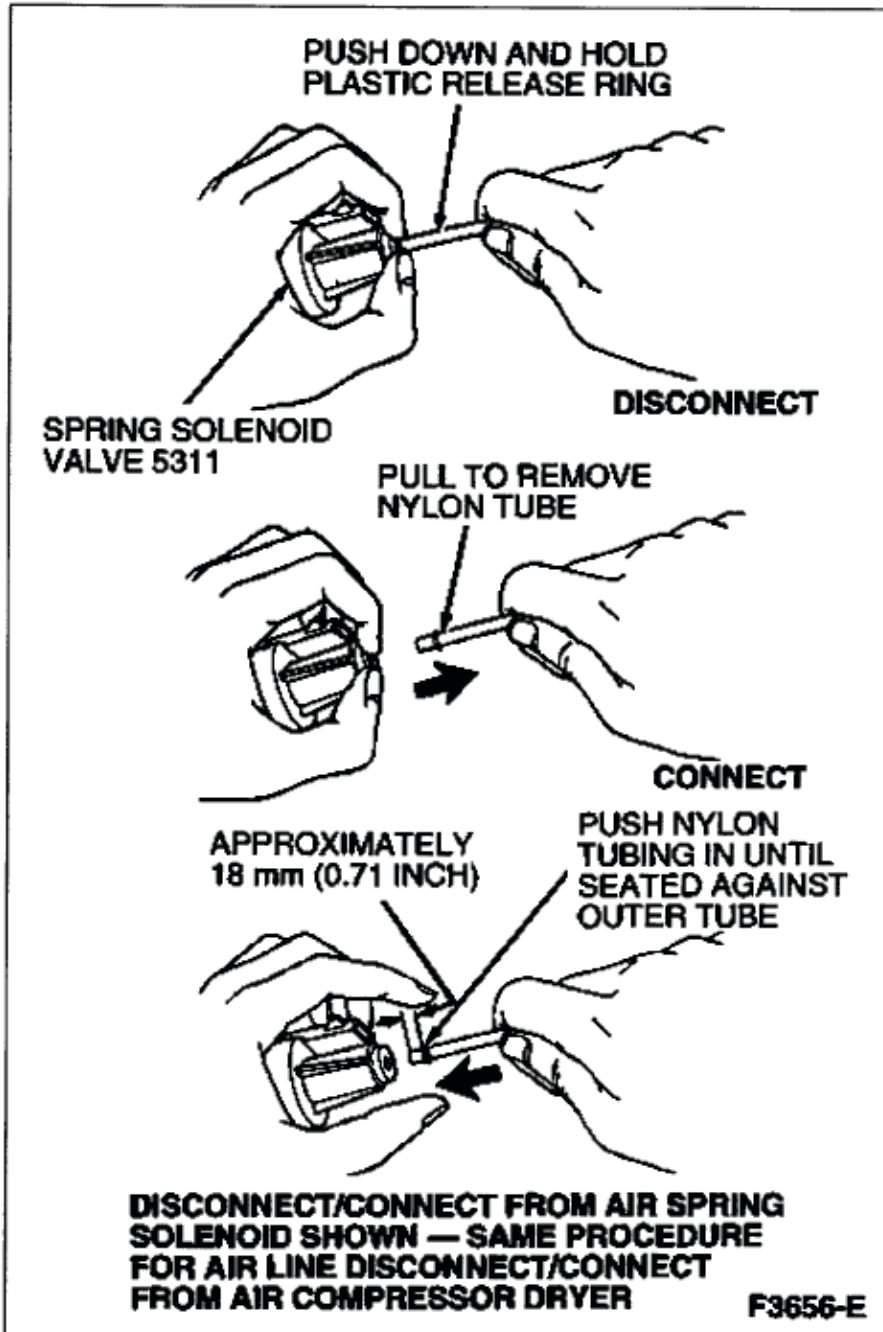
36F-15-R

Front & Rear Air Springs



For ALL Your Air Suspension Needs!!!

WARNING:
BEFORE YOU BEGIN THE REMOVAL OR INSTALLATION, READ ALL INSTRUCTIONS THOROUGHLY!
THE WARRANTY WILL BE VOID IF INSTRUCTIONS ARE NOT FOLLOWED EXACTLY. DO NOT WORK UNDER CAR UNDER A VEHICLE SUPPORTED BY A JACK. ALWAYS SUPPORT THE VEHICLE ON SAFETY STANDS.





For ALL Your Air Suspension Needs!!!

WARNING:

BEFORE YOU BEGIN THE REMOVAL OR INSTALLATION, READ ALL INSTRUCTIONS THOROUGHLY! THE WARRANTY WILL BE VOID IF INSTRUCTIONS ARE NOT FOLLOWED EXACTLY. DO NOT WORK UNDER CAR UNDER A VEHICLE SUPPORTED BY A JACK. ALWAYS SUPPORT THE VEHICLE ON SAFETY STANDS.

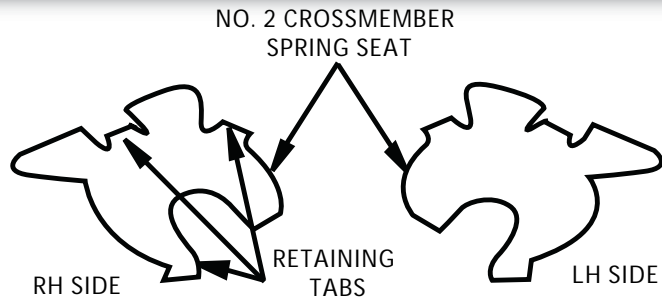
REMOVAL

- 1 Remove air spring solenoid as outlined on PAGE 3.
- 2 If replacing front spring, remove spring to lower control arm retaining clip. If replacing rear spring, remove retaining clip and/or bolts.
- 3 Push down on air spring collar spring clip, then rotate collar counterclockwise until spring releases from body spring seat.
- 4 Remove spring from vehicle.

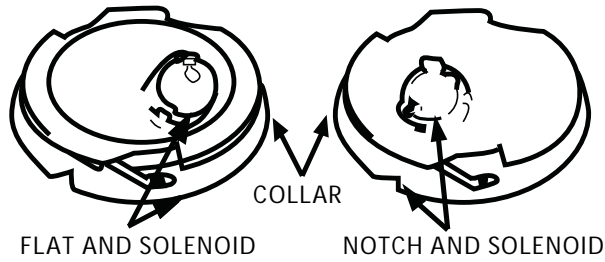
INSTALLATION

- 1 Install air spring solenoid. If left side spring is being replaced, position solenoid so notch on spring collar is in line with center line of solenoid. If right side spring is being replaced, position solenoid so flat on collar is in line with center line of solenoid. Refer to PAGE 2, for correct positioning. Do not attempt to install or inflate any air spring which has become unfolded.
- 2 Install air spring into body spring seat, then rotate spring collar until spring clip snaps into position, PAGE 2.
- 3 Connect air line and electrical connector to solenoid.
- 4 Align and secure spring to lower control arm. The suspension must be at its full travel when replacing the springs, as damage to spring may result.
- 5 Replace wheel assembly.
- 6 Refill air springs as outlined in MAINTENANCE PROCEDURES/AIR SPRINGS REFILL.

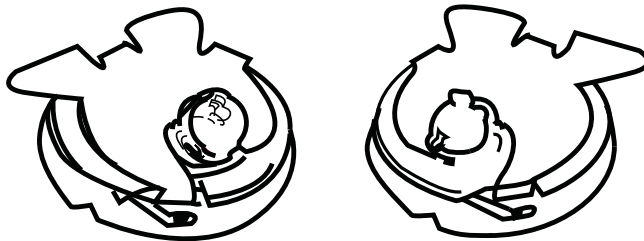
ALWAYS USE EXTREME CAUTION WHEN LIFTING THE VEHICLE
(refer to shop manual for lifting instructions)



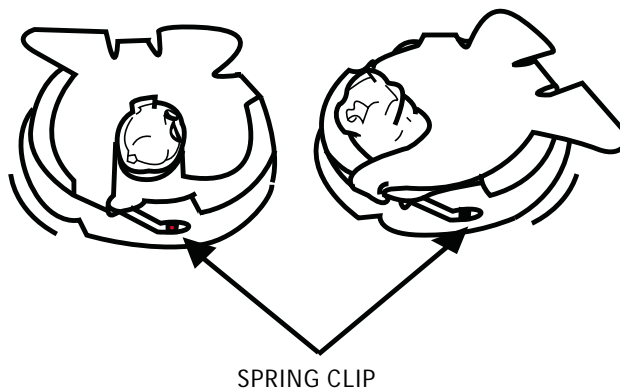
1 ALIGN PROPERLY



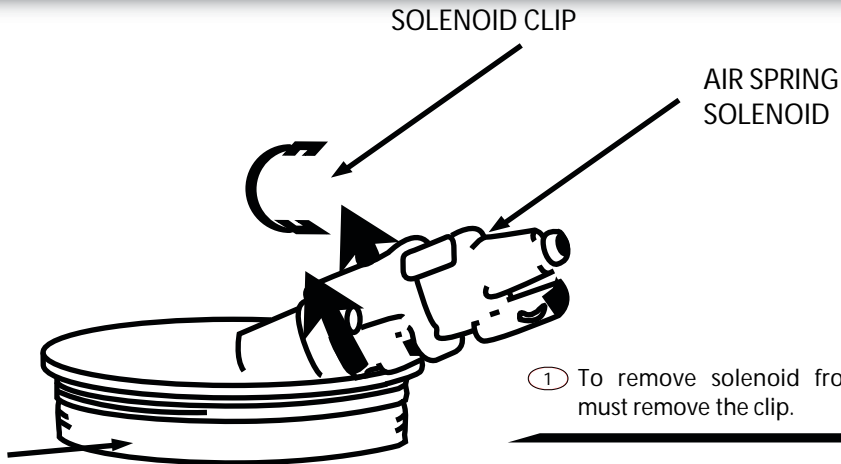
2 POSITION INTO
SPRING SEAT



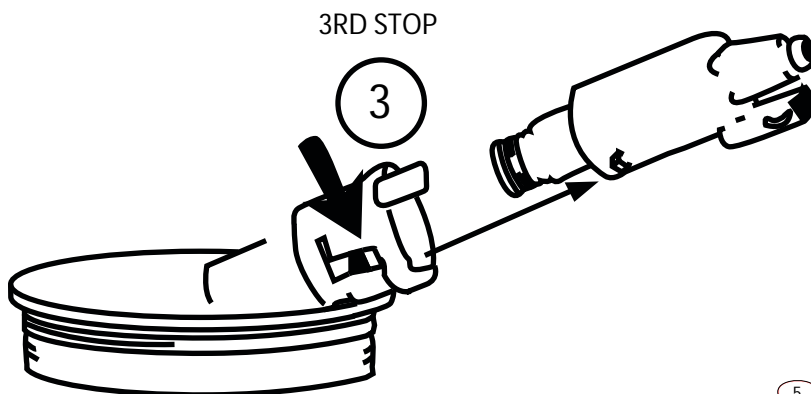
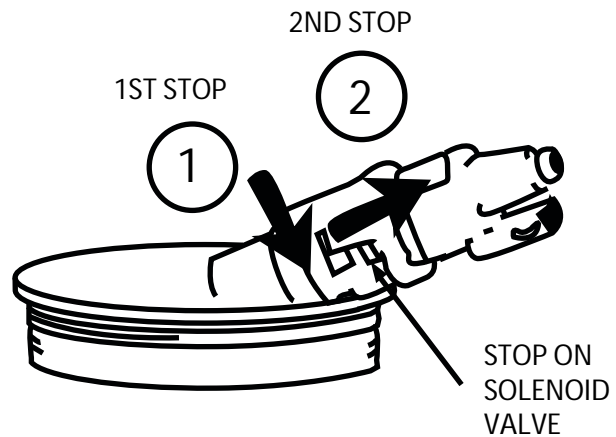
3 ROTATE
COLLAR AS
SHOWN UNTIL
SPRING CLIP
SNAPS INTO
PLACE



AIR SPRING END CAP
(PART OF SPRING ASSEMBLY)



- ② Rotate valve counterclockwise to 1st stop.
- ③ Pull solenoid straight out slowly until all air is deflated from air spring.
- ④ Once deflated, rotate counterclockwise to 2nd stop.



DO NOT REMOVE
UNTIL AIR IS EXHAUSTED
FROM SPRING

- ⑤ Remove solenoid from air spring.

REMOVAL SHOWN - REVERSE SEQUENCE FOR SOLENOID INSTALLATION