

ALL PARTS ARE TO BE INSTALLED BY A CERTIFIED ASE TECHNICIAN



2004-2009 Cadillac SRX

Rear Electronic Air to Passive Gas
Shock Conversion Kit

155G-32-R

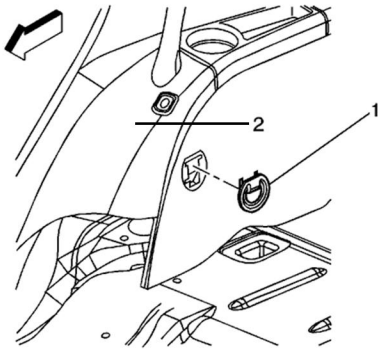


Before you begin the removal or installation, please read all or the instructions thoroughly!
The warranty will be void if instructions are not followed exactly. Do not work under a vehicle supported by a jack.
Always support the vehicle safety standards.

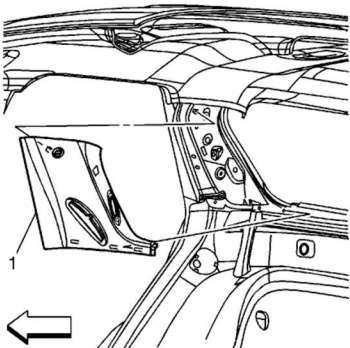
1. Fold Down Rear Seats.

2. Remove Rear Quarter Trim Tie Down Bezel. (1)

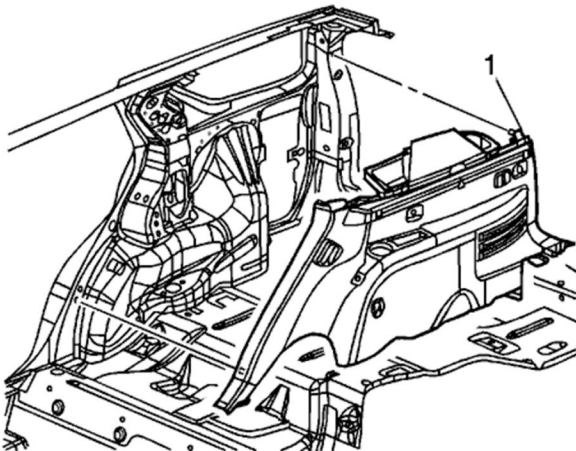
3. Remove the Side Door Garnish Molding by Pulling the Panel From Locator Holes. (2)



4. Remove Upper "C" Pillar Garnish Molding. (1)



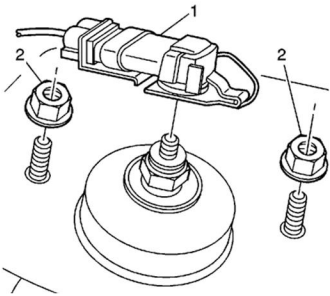
5. Pull the Side Trim Panel Away From the Body. (1)



6. Behind the Trim Panel Just Removed, Remove the Sound Insulator Away From Shock Tower.

7. Remove Electrical Connector From Top of Shock. (1)

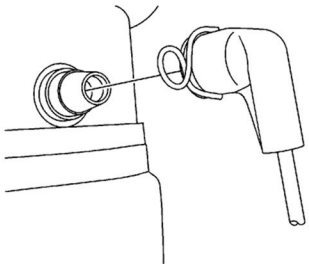
8. Remove the Upper Shock Mounting Nuts. (2)



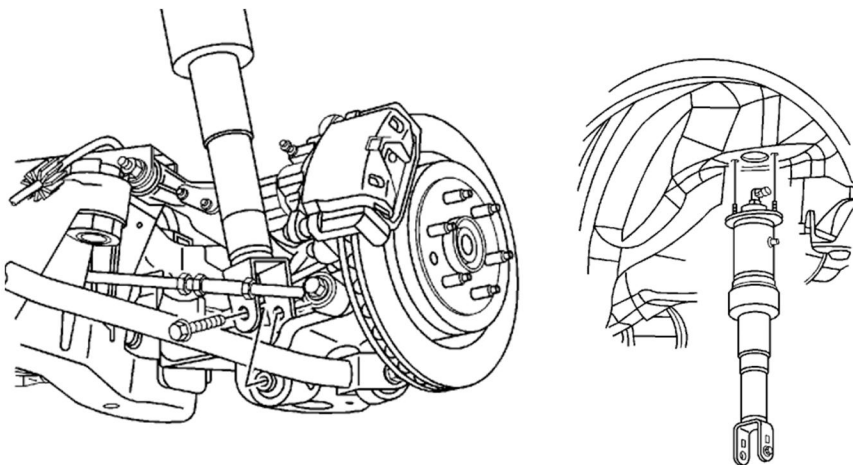
Resistors will be attached to these electrical wires (1). Instructions for resistors are on the next page.

9. Raise and Support the Vehicle.

10. Remove Air Line From Shock.



11. Remove the Lower Shock Mounting Bolt. Remove Shock From Vehicle.



12. Install in Reverse Order.



BEFORE YOU BEGIN THE REMOVAL OR INSTALLATION, PLEASE READ ALL OF THE INSTRUCTIONS THOROUGHLY!

THE WARRANTY WILL BE VOID IF INSTRUCTIONS ARE NOT FOLLOWED EXACTLY. DO NOT WORK UNDER A VEHICLE SUPPORTED BY A JACK.

ALWAYS SUPPORT THE VEHICLE ON SAFETY STANDS.

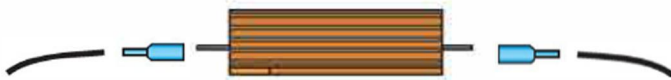
Resistors are connected into the wiring at each wheel to bypass the original dampening solenoid. This will allow the Road Sensing Suspension to function without giving the driver a "Suspension Error" message on the instrument cluster. The resistors are only meant to bypass the dampening solenoids, not disable the entire system. Check the suspension codes to ensure that you don't have other problems that will cause a suspension error message. To get an accurate reading of any suspension problems you may have occurring, you will need to clear all suspension codes and then test drive the vehicle and watch for suspension error messages.

Step 1

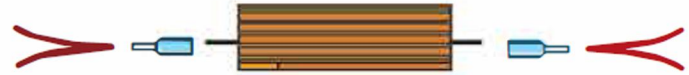
Cut the wires leading to the dampening solenoid (plug) on the wiring harness leading to the strut/ shock. After cutting the plug off there should be two or four wires.

Step 2

Connect the one wire to each end of the resistor. If you have four wires connect two wires to each end of the resistor. (This is an inline resistor, so it doesn't matter which end of the resistor each wire goes to.)



Two wire installation



Four wire installation

Step 3

Secure ends of wire to resistor using the connectors provided to prevent shorts and corrosion. To ensure connectors are secure use crimping tool. Tape or heat shrink wrap may be used as well.

******Resistors get very hot and must be installed and tied back onto frame of the vehicle. This will give resistors the proper ventilation and will prevent any issues.******

Step 4

Tie the resistor back out of the way. Installation is now complete.