

ALL PARTS ARE TO BE INSTALLED BY A CERTIFIED ASE TECHNICIAN



1999 - 2006 Mercedes S Class

W220 Airmatic Suspension
Air to Passive Coil Spring & Strut
Conversion Kit

134M-31-4



Before you begin the removal or installation, please read all or the instructions thoroughly!
The warranty will be void if instructions are not followed exactly. Do not work under a vehicle supported by a jack.
Always support the vehicle safety standards.



BEFORE YOU BEGIN THE REMOVAL OR INSTALLATION, PLEASE READ ALL OF THE INSTRUCTIONS THOROUGHLY!

THE WARRANTY WILL BE VOID IF INSTRUCTIONS ARE NOT FOLLOWED EXACTLY. DO NOT WORK UNDER A VEHICLE SUPPORTED BY A JACK.

ALWAYS SUPPORT THE VEHICLE ON SAFETY STANDS.

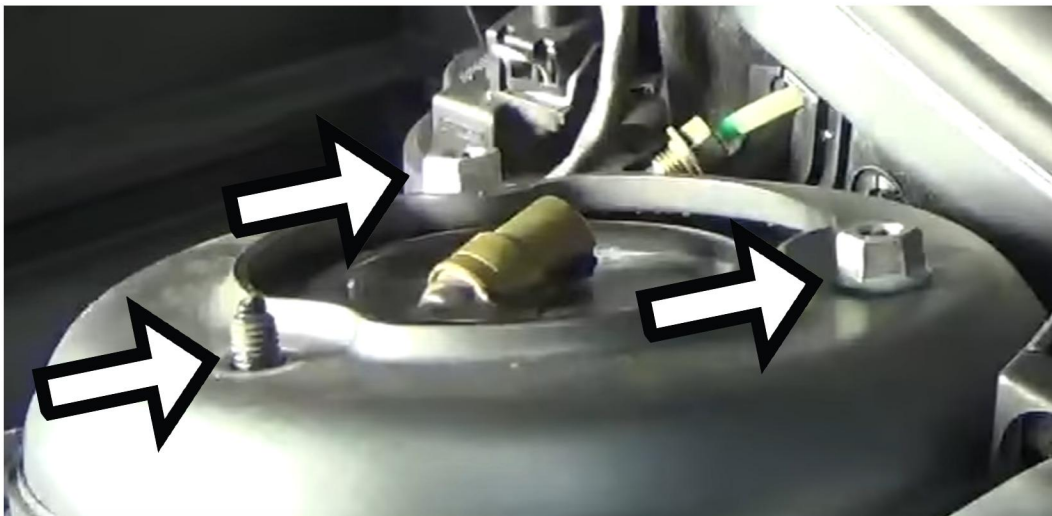
1. Disconnect Battery Located in Passenger Side of Trunk Under Liner.



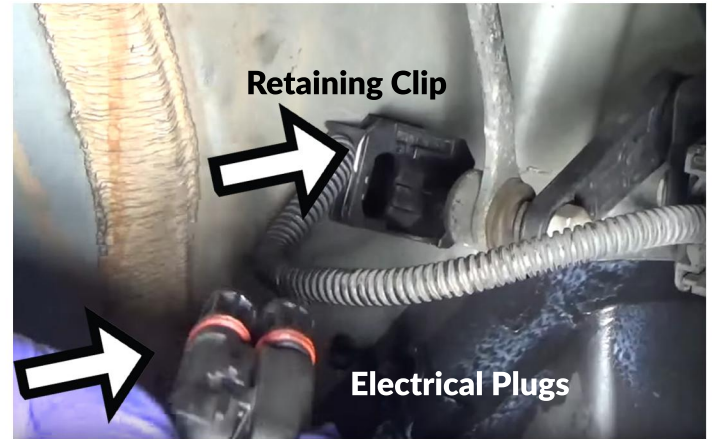
2. Disconnect Air Line Fitting From the top of Strut.



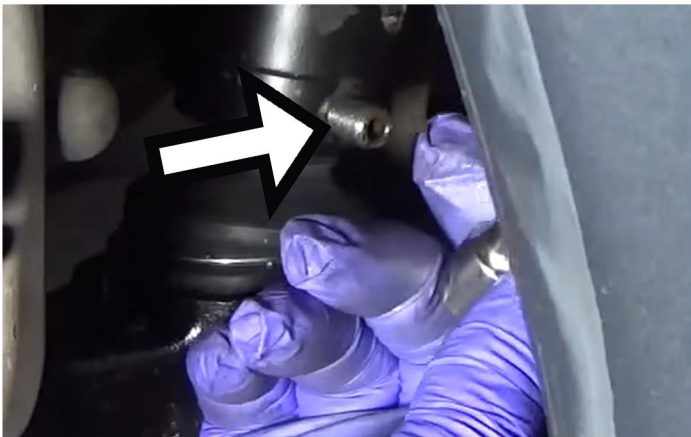
3, Remove the 3 Retaining Nuts From the Top of The Strut



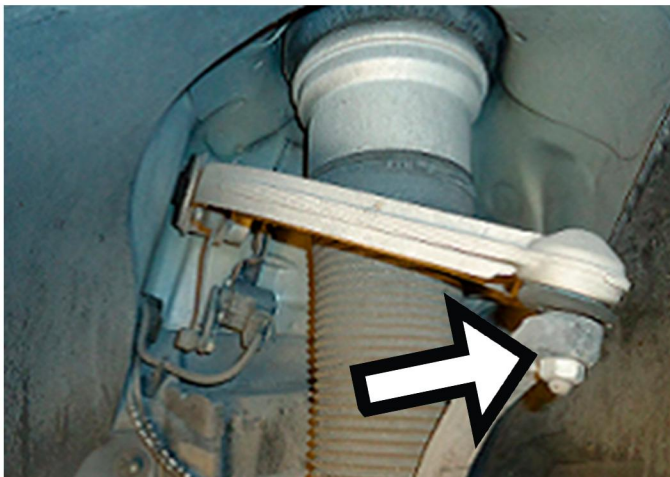
4. Locate the Electrical Plugs Inside the Wheel Well. Lift up the Retaining Clip and Remove Connectors.



5. Remove Set Screws From Bottom of Strut on Either Side.



6. Separate Upper Control Arm Ball Joint from the Spindle Assembly. Remove Strut Assembly.



Pro Tip: Using a Ball Joint Tool Will Remove Easier.



7. Install In Reverse Order.



BEFORE YOU BEGIN THE REMOVAL OR INSTALLATION, PLEASE READ ALL OF THE INSTRUCTIONS THOROUGHLY!

THE WARRANTY WILL BE VOID IF INSTRUCTIONS ARE NOT FOLLOWED EXACTLY. DO NOT WORK UNDER A VEHICLE SUPPORTED BY A JACK.

ALWAYS SUPPORT THE VEHICLE ON SAFETY STANDS.

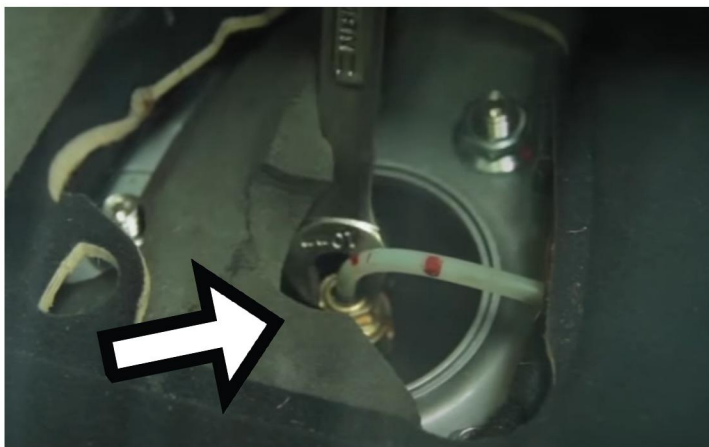
1. Remove Rear Wheel.



2. Inside Cabin on the Rear Decklid by the Window is the Access Panel to Remove the Retaining Nuts to the Rear Suspension. Lift Panel and Remove 3 Retaining Nuts.



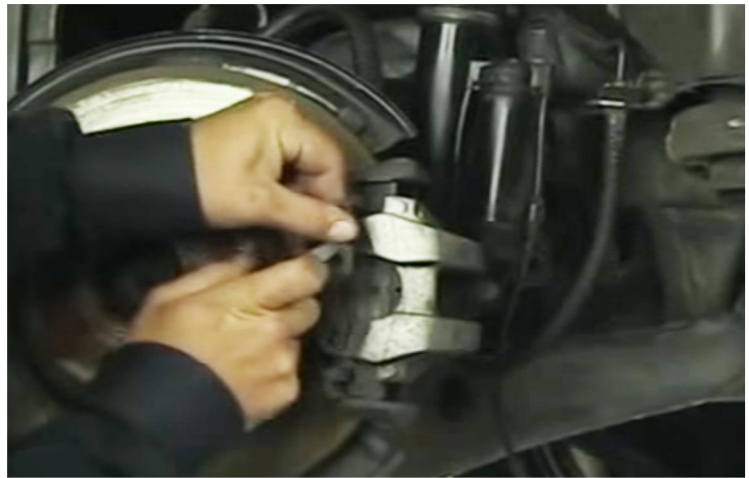
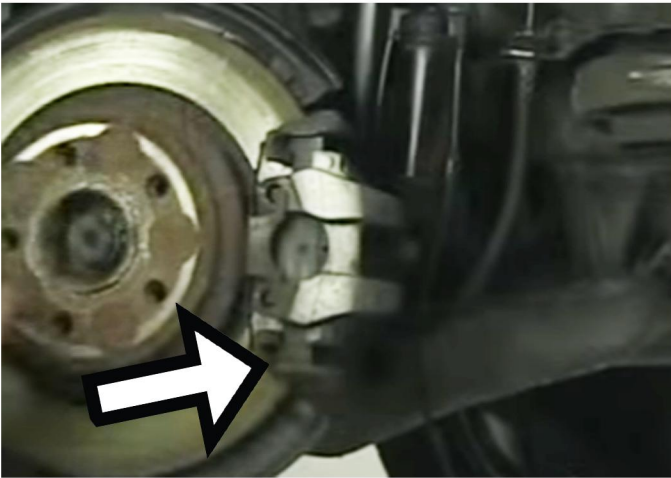
3. Remove Air Fitting From Top of Strut.



4. Under Vehicle, Remove Access Boot Covering Electronics Cable to Rear Brake Caliper.



5. Remove Brake Caliper Spring.



6. Remove Retaining the 2 Bolts from Caliper and Move Caliper Aside.





BEFORE YOU BEGIN THE REMOVAL OR INSTALLATION, PLEASE READ ALL OF THE INSTRUCTIONS THOROUGHLY!

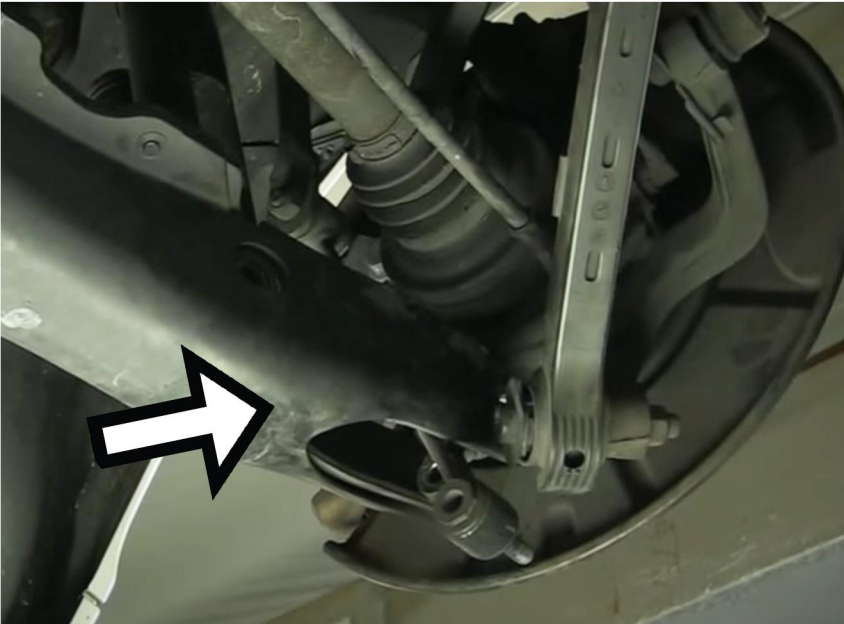
THE WARRANTY WILL BE VOID IF INSTRUCTIONS ARE NOT FOLLOWED EXACTLY. DO NOT WORK UNDER A VEHICLE SUPPORTED BY A JACK.

ALWAYS SUPPORT THE VEHICLE ON SAFETY STANDS.

7. Remove the Bolt to the Lower Sway Bar Link to Disconnect from Knuckle.



8. Remove the Outer Control Arm Bolt. Let Lower Control Arm Swing Down.



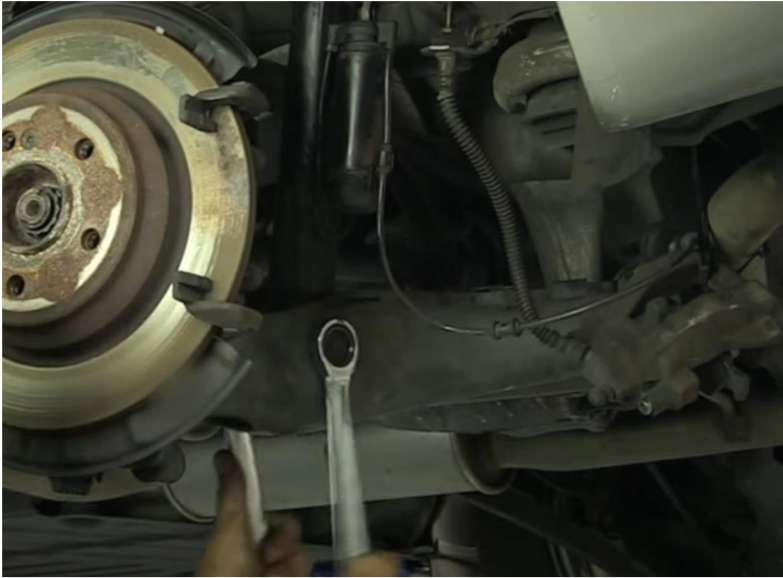


BEFORE YOU BEGIN THE REMOVAL OR INSTALLATION, PLEASE READ ALL OF THE INSTRUCTIONS THOROUGHLY!

THE WARRANTY WILL BE VOID IF INSTRUCTIONS ARE NOT FOLLOWED EXACTLY. DO NOT WORK UNDER A VEHICLE SUPPORTED BY A JACK.

ALWAYS SUPPORT THE VEHICLE ON SAFETY STANDS.

9. Remove Lower Strut Mount Bolts.



10. Pull Downward on the Lower Control Arm to Free Strut Assembly. Remove Strut From Vehicle.



11. Verify the Retaining Nuts on the Replacement Strut are Removed Prior to Installation.

12. Install in Reverse Order.