

ALL PARTS ARE TO BE INSTALLED BY A CERTIFIED ASE TECHNICIAN



1999 - 2006 Mercedes S Class
Electronic Airmatic Suspension Shock
134M-28-R

Installation Instructions



For ALL Your Air Suspension Needs!!!

Before you begin the removal or installation, please read all or the instructions thoroughly!
The warranty will be void if instructions are not followed exactly. Do not work under a vehicle supported by a jack.
Always support the vehicle safety standards.



BEFORE YOU BEGIN THE REMOVAL OR INSTALLATION, PLEASE READ ALL OF THE INSTRUCTIONS THOROUGHLY!

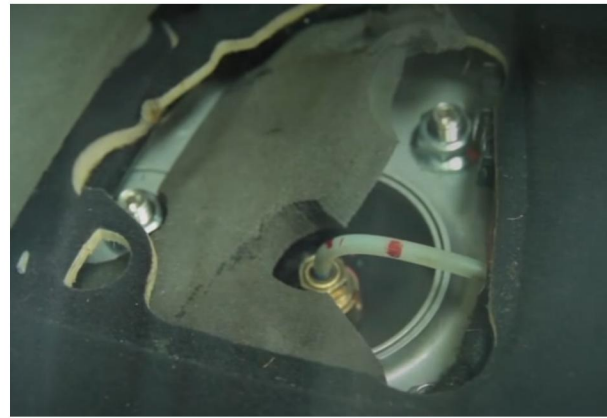
THE WARRANTY WILL BE VOID IF INSTRUCTIONS ARE NOT FOLLOWED EXACTLY. DO NOT WORK UNDER A VEHICLE SUPPORTED BY A JACK.

ALWAYS SUPPORT THE VEHICLE ON SAFETY STANDS.

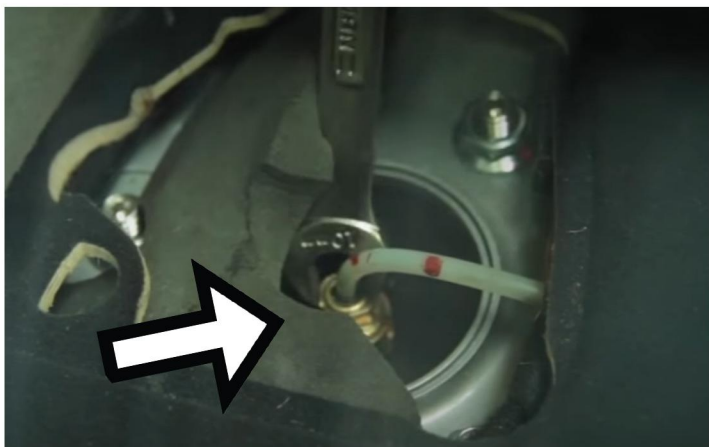
1. Remove Rear Wheel.



2. Inside Cabin on the Rear Decklid by the Window is the Access Panel to Remove the Retaining Nuts to the Rear Suspension. Lift Panel and Remove 3 Retaining Nuts.



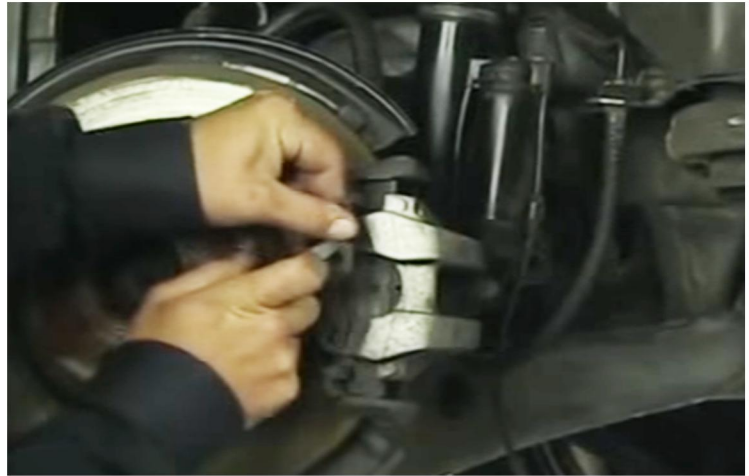
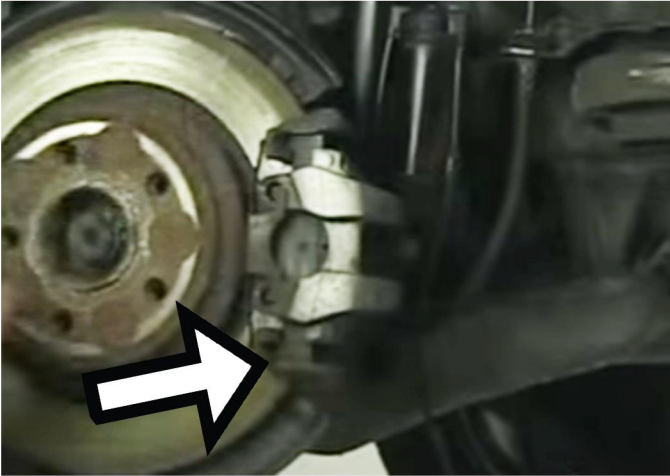
3. Remove Air Fitting From Top of Strut.



4. Under Vehicle, Remove Access Boot Covering Electronics Cable to Rear Brake Caliper.



5. Remove Brake Caliper Spring.



6. Remove Retaining the 2 Bolts from Caliper and Move Caliper Aside.





BEFORE YOU BEGIN THE REMOVAL OR INSTALLATION, PLEASE READ ALL OF THE INSTRUCTIONS THOROUGHLY!

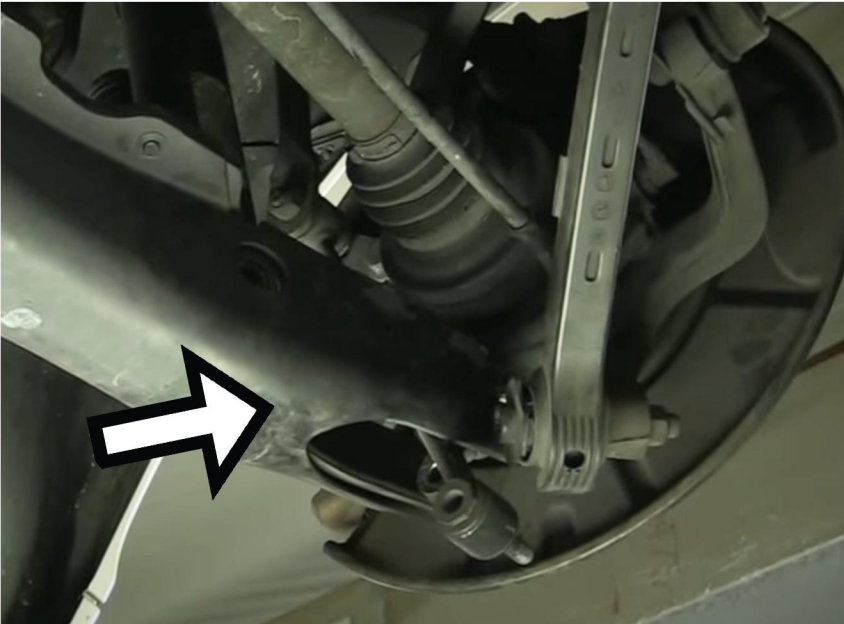
THE WARRANTY WILL BE VOID IF INSTRUCTIONS ARE NOT FOLLOWED EXACTLY. DO NOT WORK UNDER A VEHICLE SUPPORTED BY A JACK.

ALWAYS SUPPORT THE VEHICLE ON SAFETY STANDS.

7. Remove the Bolt to the Lower Sway Bar Link to Disconnect from Knuckle.



8. Remove the Outer Control Arm Bolt. Let Lower Control Arm Swing Down.





BEFORE YOU BEGIN THE REMOVAL OR INSTALLATION, PLEASE READ ALL OF THE INSTRUCTIONS THOROUGHLY!

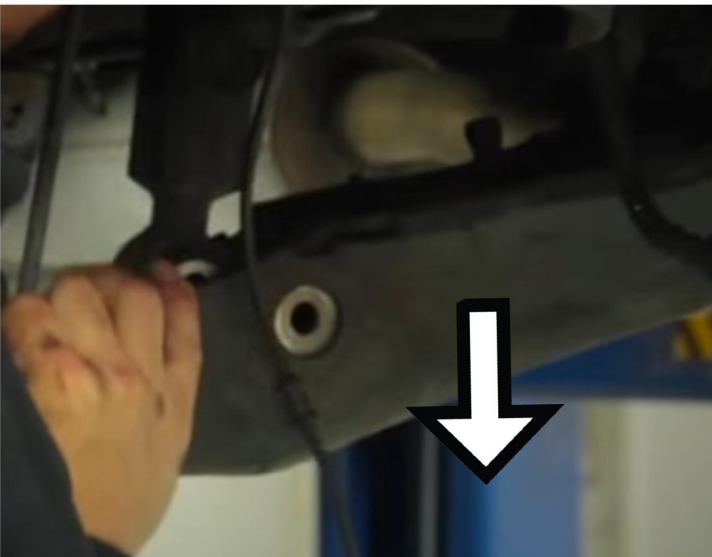
THE WARRANTY WILL BE VOID IF INSTRUCTIONS ARE NOT FOLLOWED EXACTLY. DO NOT WORK UNDER A VEHICLE SUPPORTED BY A JACK.

ALWAYS SUPPORT THE VEHICLE ON SAFETY STANDS.

9. Remove Lower Strut Mount Bolts.



10. Pull Downward on the Lower Control Arm to Free Strut Assembly. Remove Strut From Vehicle.



11. Verify the Retaining Nuts on the Replacement Strut are Removed Prior to Installation.

12. Install in Reverse Order.