



Suburban

An AIRXCEL Brand

... feels like home!

RV APPLIANCES and ACCESSORIES

Our commitment to quality and performance.

We start with performance, design, materials and style but we don't stop until the product meets the Suburban standard of quality.

Our commitment to producing quality comfort products has remained the same for over 70 years. We select only the highest quality materials, components and designs to make sure you never have to compromise on quality, performance or style.



Quality

Ensuring every single appliance that we manufacture is reliable and finished with precision is just part of what we do every day.

We test every batch that comes off our production lines to ensure that the high standards we set are met with every delivery.

We are always working hard to improve our appliances and make them even better by utilizing our history in the RV Industry.

Performance

Suburban appliances are built to be reliable and perform exquisitely - time after time.

If something should go wrong, you can rest assured that you will receive the full support of our customer care teams.

We support most of our appliances with a 2 year limited warranty to ensure that you are never without help.

Suburban cooking appliances serve style in every way.

Imagine a galley full of thoughtfully designed products that provide a seamlessly integrated look and consistently serve performance and style.

Suburban's vast array of cooking appliances can be flexible to suit your needs. From simple to luxurious, whatever it will be is nothing less than tasteful.



With so many options, you're only limited by your imagination.

Quality, durability, performance and more options than ever makes Suburban the easy choice. You can bake your cake and eat it too! Go ahead - unleash your inner chef!

Drop-Ins | Slide-Ins | Induction | Ranges

Drop-Ins & Slide-Ins

Drop-In Two Burner



6,500 BTU/h Conventional Burners

3071ABK	2 Burner, Black
3071AST	2 Burner, Stainless

Covers



Cover With or Without Wind Guards



Flush Mount Black Glass Cover

3083A	Flush Mount Glass, Clear
3084A	Flush Mount Glass, Black
3065ABK	Black, With Wind Guards
3065AST	Stainless, With Wind Guards
3066ABK	Black
3066AST	Stainless

All in One



5,800 BTU/h Sealed Burners
Built-in Flush Mount Black Glass Cover
Spark Ignition (AA Battery)

3031AST	2 Burner, All In One, Stainless
---------	---------------------------------

Drop-In Three Burner



6,500 BTU/h Right Conventional Burner
5,200 BTU/h Left Conventional Burners

2938ABK	3 Burner, Black
2938AST	3 Burner, Stainless

Covers



Cover With or Without Wind Guards



Flush Mount Clear Glass Cover

2990A	Flush Mount Glass Cover, Clear
2947ABK	Cover, Black, With Wind Guards
2947AST	Cover, Stainless, With Wind Guards
2948ABK	Cover, Black
2948AST	Cover, Stainless

Three Burner Slide-In Cooktops



2985A - Flush Mount Glass Cover - Sold Separately

9,000 BTU/h Front Burner
6,500 BTU/h Rear Burners
Conventional or Sealed Burners
Piezo Ignition

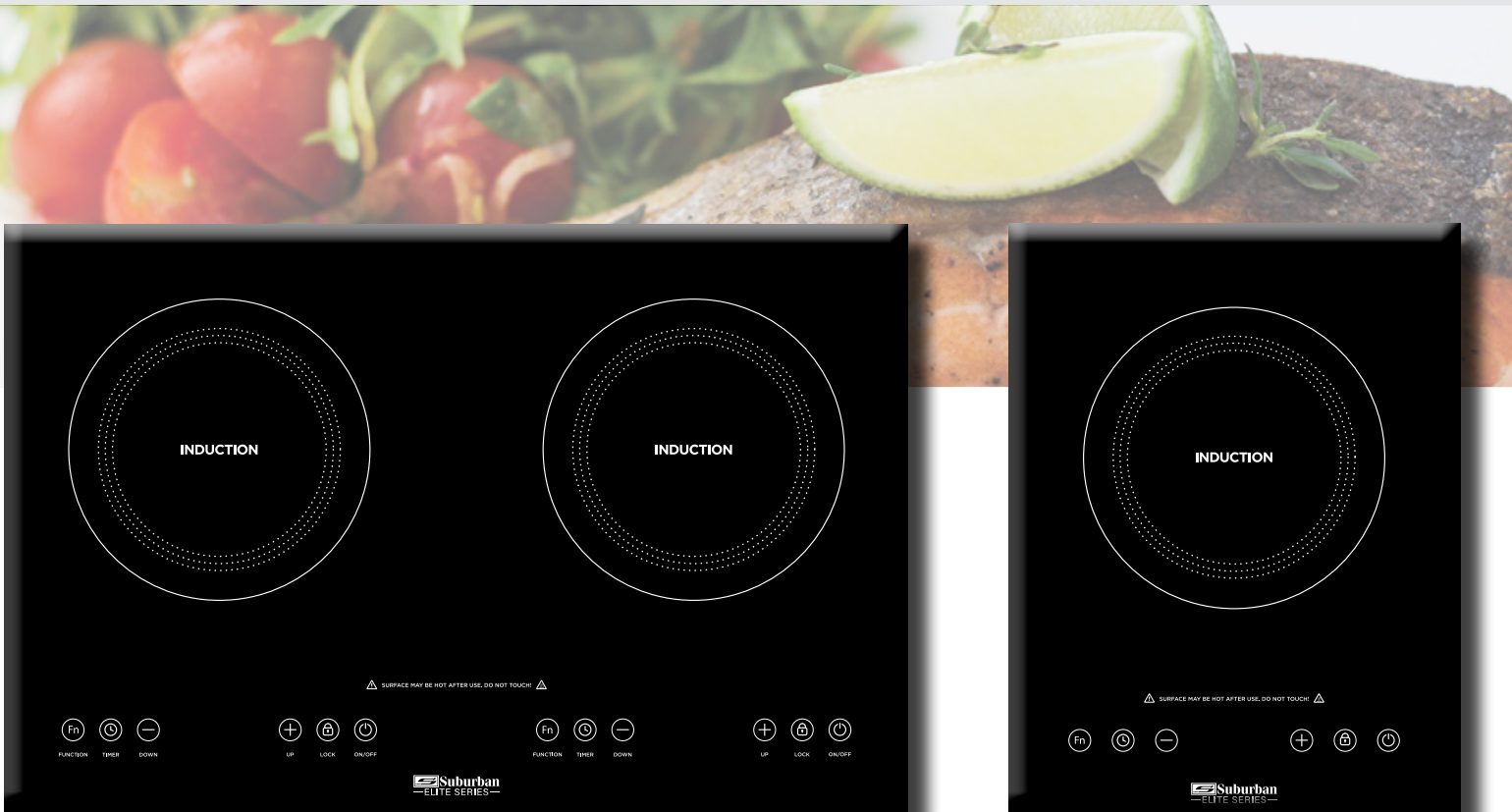
3600A	Slide-In, 3 Burner, Conventional Burners
3631A	Slide-In, 3 Burner, Sealed Burners
2985A	Flush Mount Glass Cover, Clear
2814A	Bi-fold Cover, Black

Satisfy your taste for adventure!

Boil | Brown | Fry | Sauté | Sear | Simmer

Engineered for portable use or built-in countertop applications.

Induction cooktops are a revolutionary way of cooking that uses the power of electromagnetic waves to quickly and efficiently cook or heat food faster than conventional element cooktops.



Double Element

Single Element

1800 watts of cooking power

Compact, sleek and stylish

Soft Touch Control Center

4-digit LED display

1 to 240 minute cooking timer

Smooth, grade "A" crystal cooktop

10 levels of heating power

Energy efficient

Auto safety shut off

Child Lock safety feature

Ideal for use at home or on the road - almost anywhere you have a 120v AC outlet!

Single Element Induction Cooktop

3308A

Portable or Built-In Use

Dimensions: 11.8"W x 15.3"L x 3.5"H

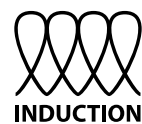
Double Element Induction Cooktop

3309A

Portable or Built-In Use

Dimensions: 23.6"W x 15.3"L x 3.5"H

EliteSERIES



Induction cooking requires pots and pans that are made of ferromagnetic materials. Look for the induction symbol on the cookware packaging or on the pan.

Designed for Adventure.

17" and 22" Ranges



3612A 17" Range



3620A 22" Range



3608A 17" Range



3615A 22" Range

9,000 BTU/h Front Burner | 6,500 BTU/h Rear Burners
Piezo Ignition | Conventional Burners
Black Knobs | Silver Oven Handle | Stainless Oven Door
Optional Covers Available

9,000 BTU/h Front Burner | 6,500 BTU/h Rear Burners
Piezo Ignition | Conventional Burners
Black Knobs | Black Oven Handle | Black Oven Door
Optional Covers Available

UPGRADE TO LED BACKLIT KNOBS AND OVEN LIGHT



3652A 17" Range



3653A 22" Range



3654A 17" Range



3655A 22" Range

9,000 BTU/h Front Burner | 6,500 BTU/h Rear Burners
Piezo Ignition | Conventional Burners
12 Volt LED Backlit Silver Knobs
Silver Oven Handle | Stainless Oven Door
12 Volt Oven Light | Optional Covers Available

9,000 BTU/h Front Burner | 6,500 BTU/h Rear Burners
Piezo Ignition | Conventional Burners
12 Volt LED Backlit Black Knobs
Black Oven Handle | Black Oven Door
12 Volt Oven Light | Optional Covers Available

OVEN LIGHT
(Enhanced for illustration purposes)



LED BACKLIGHT CONTROL KNOBS
(Enhanced for illustration purposes)

Designed for Life.

Elegant 17" and 22" Glass Front Ranges



3621A 17" Conventional Burner Range
9,000 BTU/h Front Burner | 6,500 BTU/h Rear Burners | Piezo Ignition
Brushed Nickel Knobs | Silver Oven Handle | Optional Covers Available



3622A 22" Conventional Burner Range



3637A 17" Sealed Burner Range
9,000 BTU/h Front Burner
6,500 BTU/h Rear Burners
Piezo Ignition | Black Knobs
Black Oven Handle
Optional Covers Available



3643A 22" Sealed Burner Range
9,000 BTU/h Front Burner
6,500 BTU/h Rear Burners
Piezo Ignition | Brushed Nickel Knobs
Brushed Stainless Oven Handle
Optional Covers Available

OPTIONAL COVERS



2814A Bi-fold Black Cover



2985A Flush Mount Glass Cover

RANGE AND FLUSH MOUNT GLASS COVER COMBINATION

- 9,000 BTU/h Front Burner
- 6,500 BTU/h Rear Burners
- Spark Ignition | Conventional Burners
- Brushed Nickel Knobs
- Brushed Stainless Oven Handle
- Built-in Flush Mount Glass Cover



3627A 17" Range



3628A 22" Range

These Suburban Cooking Appliances Feature A 2 Year Limited Warranty.
GAS APPLIANCES MUST BE INSTALLED BY A QUALIFIED SERVICE TECHNICIAN

Comfort you can depend on.

Designed, built and backed by one of the most trusted names in the RV Industry, the Suburban line of powerful RV furnaces provide superior, dependable heating in uniform cabinet sizes for installation flexibility.



Warm up to an inviting coach interior with quiet, low noise, dependable heating solutions.

**SF-Q | SF-FQ | NT-SQ | NT-SEQ
NT | Park Model | Furnace Core**

Wrap yourself in comfort.

FURNACES

Efficient low-profile ducted furnaces
Sealed forced-draft combustion | Direct spark ignition
SF-FQ models do not require exterior access doors.



SF-Q SERIES

- 2386A SF-20Q, 20,000 BTU/h
CORE EQUIVALENT
2605A, RP-20Q, 20,000 BTU/h
- 2387A SF-25Q, 25,000 BTU/h
- 2388A SF-30Q, 30,000 BTU/h
CORE EQUIVALENT
2607A, RP-30Q, 30,000 BTU/h
- 2398A SF-35Q, 35,000 BTU/h
- 2399A SF-42Q, 40,000 BTU/h
CORE EQUIVALENT
2609A, RP-35Q, 35,000 BTU/h
- 6258ACW - Colonial White Access Door
6258APW - Polar White Access Door

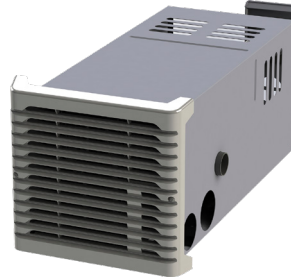
SF-FQ SERIES

- 2389A SF-20FQ, 20,000 BTU/h
CORE EQUIVALENT
2606A, RP-20FQ, 20,000 BTU/h
- 2390A SF-25FQ, 25,000 BTU/h
- 2391A SF-30FQ, 30,000 BTU/h
CORE EQUIVALENT
2608A, RP-30FQ, 30,000 BTU/h
- 2400A SF-35FQ, 35,000 BTU/h
- 2401A SF-42FQ, 40,000 BTU/h
CORE EQUIVALENT
2610A, RP-35FQ, 35,000 BTU/h

THERMOSTATS

- 161154 - Heat Only T-Stat, White
- 161210 - Heat Only T-Stat, Black

Lightweight and efficient
NT-SEQ MODELS - direct discharge for zone heating of smaller interiors.
NT-SQ MODELS - ducted for even heat distribution



NT-SEQ SERIES

- NT-16SEQ 16,000 BTU/h
2503APW
2503ABK
PW - Polar White Discharge Grille
BK - Black Discharge Grille
- NT-20SEQ 19,000 BTU/h
2504APW
2504ABK
PW - Polar White Discharge Grille
BK - Black Discharge Grille
- CORE EQUIVALENT
2612A, RP-16NEQ, 16,000 BTU/h
Grille not included with core

ACCESSORIES

- 050715 - 4" Duct Collar
- 050733 - 4-7/8" Duct Cover
- 051240 - 2" Duct Collar

NT-SQ SERIES

- 2444A NT-16SQ, 16,000 BTU/h
- 2450A NT-20SQ, 19,000 BTU/h
CORE EQUIVALENT
2611A, RP-16NQ, 16,000 BTU/h

Compact and powerful for
ducted applications
Multiple ducting locations



NT and PARK MODELS

- 2453A NT-30SP, 30,000 BTU/h
- 2454A NT-34SP, 34,000 BTU/h
CORE EQUIVALENT
2613A, RP-30N, 30,000 BTU/h
- 2455A NT-40, 40,000 BTU/h
CORE EQUIVALENT
2614A, RP-40N, 40,000 BTU/h
- 2456A P-40, 40,000 BTU/h
CORE EQUIVALENT
2615A, RP-40P, 40,000 BTU/h

FURNACE CORES

Why remove and repair a furnace with individual parts when
you can simply install a furnace core. Backed by a Two (2) Year Limited Warranty!

SF-Q and SF-FQ SERIES



NT-SQ and NT-SEQ SERIES



NT and Park Models



Suburban Furnaces and Furnace Cores Feature A 2 Year Limited Warranty. Thermostats and Doors Sold Separately
GAS APPLIANCES MUST BE INSTALLED BY A QUALIFIED SERVICE TECHNICIAN

Drench yourself in warmth.

In most cases, the water heater is virtually always out of sight, but is rarely ever out of mind. At Suburban, we feel that the water heating system is one of the most important components for providing comfort.

From porcelain lined, steel tanks to the innovative tankless, continuous on demand, Suburban Advantage water heaters incorporate a large range of features for ultimate application flexibility.

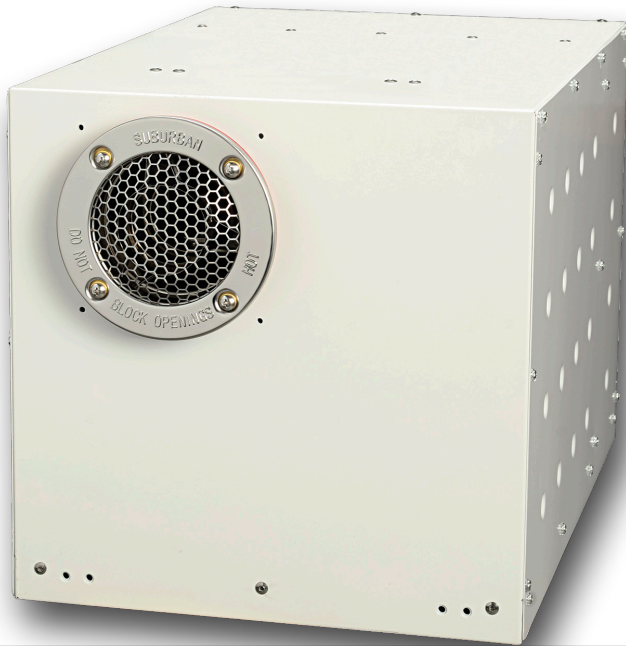


Quality, efficiency, features, service, and selection. For more than 30 years, these have been the gold standard of Suburban water heaters.

SUBURBAN ADVANTAGE **Storage and Tankless Water Heaters**

Hot Water - whenever and wherever.

SUBURBAN ADVANTAGE TANKLESS, CONTINUOUS WATER HEATER



Showers, baths, dishes and even the laundry can be done with an infinite supply of hot water whenever and wherever, simultaneously from every fixture.

- Microprocessor controlled self-modulating operation from 15,000 - 60,000 BTU/h
- 2 built-in freeze protection mechanisms
- Direct Spark Ignition

Easily replaces any 6, 10, 12 or 16 gallon porcelain tank or aluminum tank models!

A Suburban replacement panel and vent cap are required when replacing Suburban 6, 10, 12, and 16 gallon tank units.
When replacing a Dometic/Atwood style 6 or 10 gallon unit, a Dometic/Atwood style replacement panel kit and a vent cap are required.

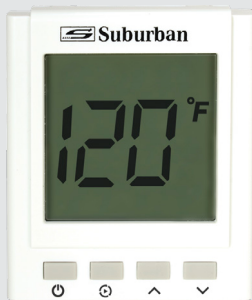
UNIT DIMENSIONS: 12 1/2" H x 12 1/2" W x 21 1/2" D

5286A - Suburban Advantage Tankless, Continuous Water Heater

FOR A COMPLETE INSTALLATION, CHOOSE:

OPERATION METHOD

On Demand Control Center - provides precise temperature control, with reliable and consistent comfort from the convenience of your RV.



On Demand Control Center

- | | |
|--------|-----------------------|
| 162291 | White, Control Center |
| 162292 | Black, Control Center |
| 234229 | Black, ON/OFF Switch |
| 234589 | White, ON/OFF Switch |

REPLACEMENT PANEL

A replacement panel must be purchased to replace the existing exterior water heater door.



- | | |
|---------|------------------------------------|
| 6376APW | Polar White, Suburban 6 Gal |
| 6377APW | Polar White, Suburban 10 Gal |
| 522147 | Polar White, Dometic/Atwood 6 Gal |
| 522150 | Polar White, Dometic/Atwood 10 Gal |

VENT CAP

The length of the vent cap is determined by the RV wall thickness.

Available in 3 sizes



- | | |
|--------|-------------------------------|
| 261616 | 1" for 0"-1" Wall Thicknesses |
| 261617 | 2" for 1"-2" Wall Thicknesses |
| 261618 | 3" for 2"-3" Wall Thicknesses |

The Suburban Advantage Tankless, Continuous Water Heater Features A 2 Year Limited Warranty.
GAS APPLIANCES MUST BE INSTALLED BY A QUALIFIED SERVICE TECHNICIAN



Our expertise. Your advantage.

SUBURBAN ADVANTAGE DIRECT FIT, UPGRADE WATER HEATER

Replace competitive 6-gallon aluminum tank water heaters without unsightly and unnecessary RV sidewall modifications!

THE SUBURBAN ADVANTAGES:

PORCELAIN LINED STEEL TANK

Built just like longer lasting residential tank water heaters.

ANODE ROD

Protects against tank corrosion and doubles as a drain.

OPTIONAL ELECTRIC ELEMENT

Take advantage of campsite or generator power to heat water.

INDUSTRY EXCLUSIVE FLUE TUBE Baffles

Slows combustion process to transfer more heat to water in tank.



DOOR NOT INCLUDED.
SHOWN FOR ILLUSTRATION PURPOSES ONLY.



The Suburban Advantage Direct Fit Upgrade Tank Water Heater is the **ONLY** water heater on the market that is **A DIRECT REPLACEMENT AND DOES NOT REQUIRE**

- **cut-out modifications;**
- **interior cabinet modifications for depth; OR**
- **major modifications for plumbing connections.**

The Suburban Advantage Direct Fit Upgrade Tank Water Heater is the most economical choice when replacing a Dometic/Atwood style water heater.

Dometic's Original "G" Model

6 gal. cut-out dimensions:

12.625"H x 16.125"W

Dometic's New "WH Series"

6 gal. cut-out dimensions:

12.75H x 12.75"W

5322A*^^- SAW6DEL, 6 Gallon, DSI, 10,000 BTU/h, Incoloy Electric Element, 12VDC relay included in wire box for use with gas & electric interior wall control

5320A^ - SAW6D, 6 Gallon, DSI, 10,000 BTU/h

SUBURBAN ADVANTAGE DIRECT FIT UPGRADE WATER HEATER DOORS

6279APW - SAW6 Water Heater Door, Polar White | **6279AEB** - SAW6 Water Heater Door, Black | **6279AAW** - SAW6 Water Heater Door, Arctic White

**For most competitive aluminum tank "DE" model replacements utilizing an indoor mounted switch for LP gas ignition and electric element operation, the SAW6DEL Advantage water heater is the direct replacement model.*

^ Requires D/DE Switch (Inside mounted switch for control of water heater gas ignition). See next page.

^^ Requires DEL Switch (12 Volt ON/OFF Switch mounted inside for control of water gas ignition and powers the electric element circuit) See next page.

The Suburban Advantage Direct Fit Upgrade Water Heater Features A 2 Year Limited Warranty with at 3 Year Limited Tank Warranty.
GAS APPLIANCES MUST BE INSTALLED BY A QUALIFIED SERVICE TECHNICIAN



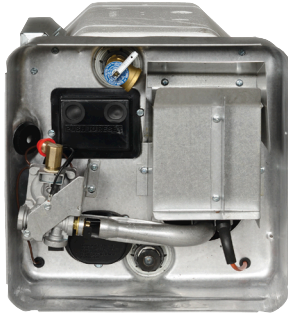
The best adventures feel like home!

SUBURBAN ADVANTAGE PORCELAIN LINED, STEEL TANK WATER HEATERS

DIRECT SPARK IGNITION (D)



DIRECT SPARK IGNITION ELECTRIC ELEMENT (DE)



DIRECT SPARK IGNITION ELECTRIC ELEMENT 12V RELAY SWITCH (DEL)



DIRECT SPARK IGNITION ELECTRIC ELEMENT MOTOR AID (DEM)

5135A	9,000 BTU/h - 4 GAL
5238A	12,000 BTU/h - 6 GAL
5242A	12,000 BTU/h - 10 GAL
5246A	12,000 BTU/h - 12 GAL
5150A	12,000 BTU/h - 16 GAL

5136A	9,000 BTU/h - 4 GAL
5239A	12,000 BTU/h - 6 GAL
5243A	12,000 BTU/h - 10 GAL
5247A	12,000 BTU/h - 12 GAL
5151A	12,000 BTU/h - 16 GAL

5137A	9,000 BTU/h - 4 GAL
5240A	12,000 BTU/h - 6 GAL
5244A	12,000 BTU/h - 10 GAL
5248A	12,000 BTU/h - 12 GAL

5241A	12,000 BTU/h - 6 GAL
5245A	12,000 BTU/h - 10 GAL
5249A	12,000 BTU/h - 12 GAL
5153A	12,000 BTU/h - 16 GAL

DEL Models - Inside mounted 12 Volt ON/OFF SWITCH* for control of water heater gas ignition and activates power to the electric element circuit
DE, DEL Models - 1440 watt Incoloy Electric Element allows the use of campground or generator power to heat your water
 6, 10, 12, and 16 GALLON capacity DEL and DE MODELS provide 16.2 gallons per hour recovery rate when using gas and electric simultaneously.

ON/OFF SWITCH & LIGHT

D and DE ON/OFF Switch & Light



DEL ON/OFF Switch & Light



234589	White, D/DE On/Off Switch
234229	Black, D/DE On/Off Switch
232882	White, DEL On/Off Switch
233111	Black, DEL On/Off Switch

FAST RECOVERY RATE

One-piece, die-formed metal housing protects the controls from the weather
 Copolymer insulation jacket specially formed to fit the tank for additional heat retention

WATER HEATER DOORS

Polar White - Flush Mount



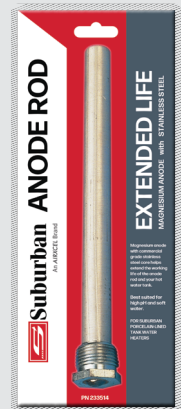
Colonial White - Radius Corner



6255ACW	Col. White, 4/6 GAL
6255APW	Polar White, 4/6 GAL
6259ACW	Col. Wht., 10/12/16 GAL
6259APW	Pol. Wht., 10/12/16 GAL

6261ACW	Col. White, 4/6 GAL
6261APW	Polar White, 4/6 GAL

ANODE RODS



233514	Extended Life Magnesium Anode Rod
232768	Aluminum Anode Rod

The Suburban Advantage Storage Water Heaters Feature A 2 Year Limited Warranty with at 3 Year Limited Tank Warranty.
GAS APPLIANCES MUST BE INSTALLED BY A QUALIFIED SERVICE TECHNICIAN

Smoke in your eyes can be a real pain.

The Suburban Voyager portable fire pit provides a safer, less stressful environment. Sit together around the fire without worrying about thick smoke or flying embers.



VOYAGER
PORTABLE FIRE PIT



**Backyards, patios, beaches, parks, camping,
tailgating and more!**

Lightweight and easy to carry

Folding legs and locking lid

54,000 BTU/h

HI to LOW settings

Includes large white natural pumice stones

Better Brands. Better Experiences.



Airxcel is a holding company of quality brands, who is a committed partner to our employees, customers, suppliers, financial partners and communities in which we operate.

Airxcel's operations in North America and Europe provide unparalleled service with product expertise to our customers worldwide.

Founded in 1991, Airxcel is the largest privately held designer, manufacturer and distributor of branded products for the recreation vehicle, commercial, and industrial markets.

Airxcel's brands provide climate control equipment for commercial and industrial markets; cooking appliances, ventilation, heating and cooling, window coverings, shades, and exterior systems to the recreation vehicle market.

Commerical / Industrial Group



Recreation Vehicle Group

