



STREET SCENE EQUIPMENT INC.

950-70221
2014-2015
CHEVY SILVERADO 1500
FRONT BUMPER COVER
"SS" STYLE
URETHANE

INSTALLATION INSTRUCTIONS

NOTE: Fit all parts before painting (See Special Instructions For Paint Prep.) Parts that have been installed, preped, or painted are not returnable.

******* NOTE: THIS WILL NOT FIT 2014-2015 GMC SIERRA 1500 TRUCKS!!!*******

Check fit all body parts PRIOR to paint. Follow urethane prep instructions before painting.

Take your time and pre-fit all pieces so that they will have a tight fit to the body.

VERY IMPORTANT! Read and understand all directions and check the following parts list before starting installation.

PARTS LIST					
1	Front Bumper Cover	1	Instruction Sheet	4	Stainless Steel Screws
2 PKS	Adhesion Promoter	1	Urethane Prep Sheet	9 FT.	1/2" Wide Two Sided Tape

INSTALLATION TOOL LIST
Drill Motor, 1/8" Drill Bit, Phillips Head Screwdriver

1. Begin by removing the factory bumper cover. First remove the 5 bolts located at each wheel well. **(Fig. 1)** Then carefully unclip the bumper cover from the bumper by depressing each retaining tab and gently pulling towards the front of the vehicle. **(Fig. 2)**
2. Disconnect the fog lights if equipped.
3. Remove front engine bay cover by removing clips and 4 upper grille retaining bolts. **(Fig.3)**
4. Remove the grille. There are 4 lower grille retaining bolts **(Fig. 4)** and two clips. The clips are located near the rear of the headlight assembly **(Fig. 5)**. Lift up and out to remove.
5. Remove the bumper assembly. Remove the 4 bumper side support bolts (two per side) **(Fig. 6)**, then remove the two bolts attaching the bumper to each frame horn **(Fig. 7)**.
6. Remove bottom air dam. Remove the 14 bolts attaching air dam to bumper **(Fig.8)**.
7. Remove bumper center. Remove the 10 bolts attaching it to bumper and the one clip per side.

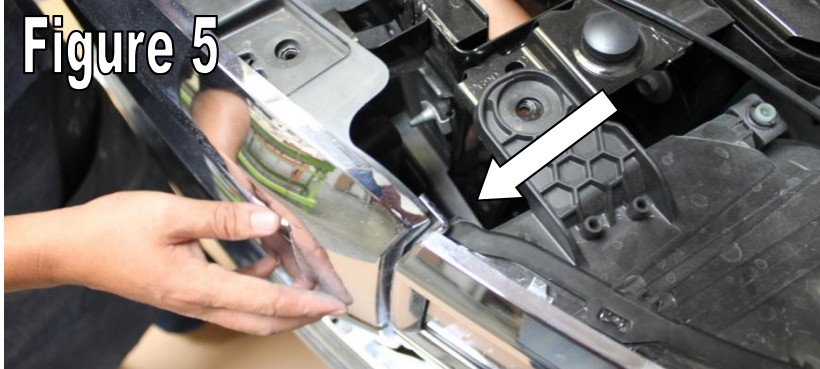
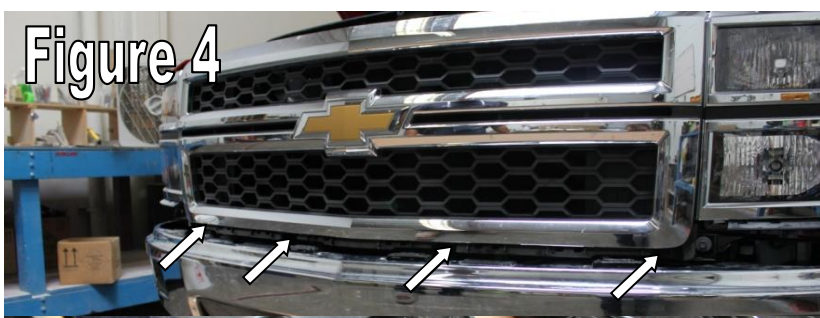
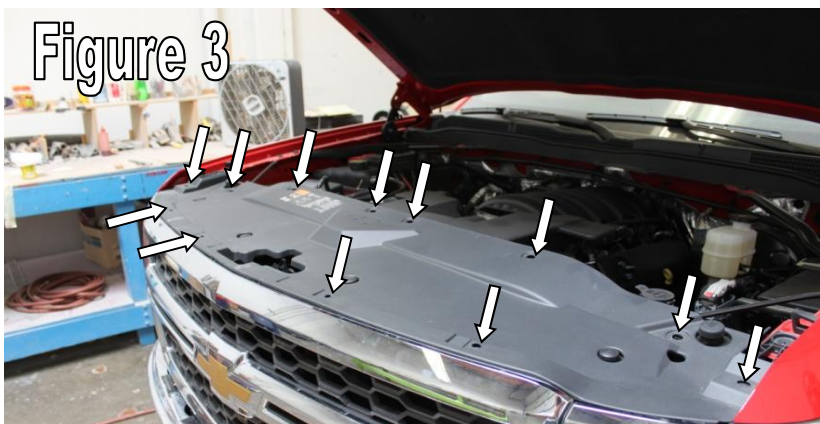


Figure 6



Figure 7

