



STREET SCENE EQUIPMENT, INC.

950-61131

GMC SIERRA
TAILGATE HANDLE
RELOCATOR KIT

INSTALLATION INSTRUCTIONS

****** REQUIRES WELDING, BODYWORK, AND PAINTING ******

****** WE HIGHLY RECOMMEND A PROFESSIONAL WELDER ******

ALWAYS WEAR SAFETY GLASSES WHEN CUTTING OR GRINDING

VERY IMPORTANT ! Read and understand all directions and check the following parts list before starting installation.

PARTS LIST					
1	Handle Relocator Plate	1	Instruction Sheet	5	Phillips Washer Head Screws
1	Filler Plate (Weld in)	1	Street Scene Decal	1	8 MM Buttonhead Bolt

TOOL LIST	
3/8" Ratchet, 13 MM Socket, Tape Measure, Saber Saw Or Die Grinder With Cut Off Wheel, Drill Motor 5/32" Drill Bit, Mig Welder, Safety Glasses, 5 MM Allen Wrench	

NOTE: Handle relocator is designed for use with non-locking tailgate. If vehicle has a locking tailgate handle you will need to purchase a non-locking handle surround at your local GM dealership.
Part Number : 15927251

SECTION I

1. Remove the tailgate from vehicle.
2. Set the tailgate on a table or bench with the outside facing down. You will see the three 13MM head bolts attaching the release handle assembly to the tailgate. Remove the SINGLE bolt at this time only.
3. Flip the tailgate over and remove the ABS black cover surrounding the tailgate handle by prying up.
4. NOTE: The position of the thread rod to the plastic clip. (Mark If Necessary) Disconnect the two linkage rods by unsnapping the nylon clips.
5. Flip the tailgate back over and remove the two remaining bolts and remove the handle assembly.

SECTION II CUTTING THE TAILGATE

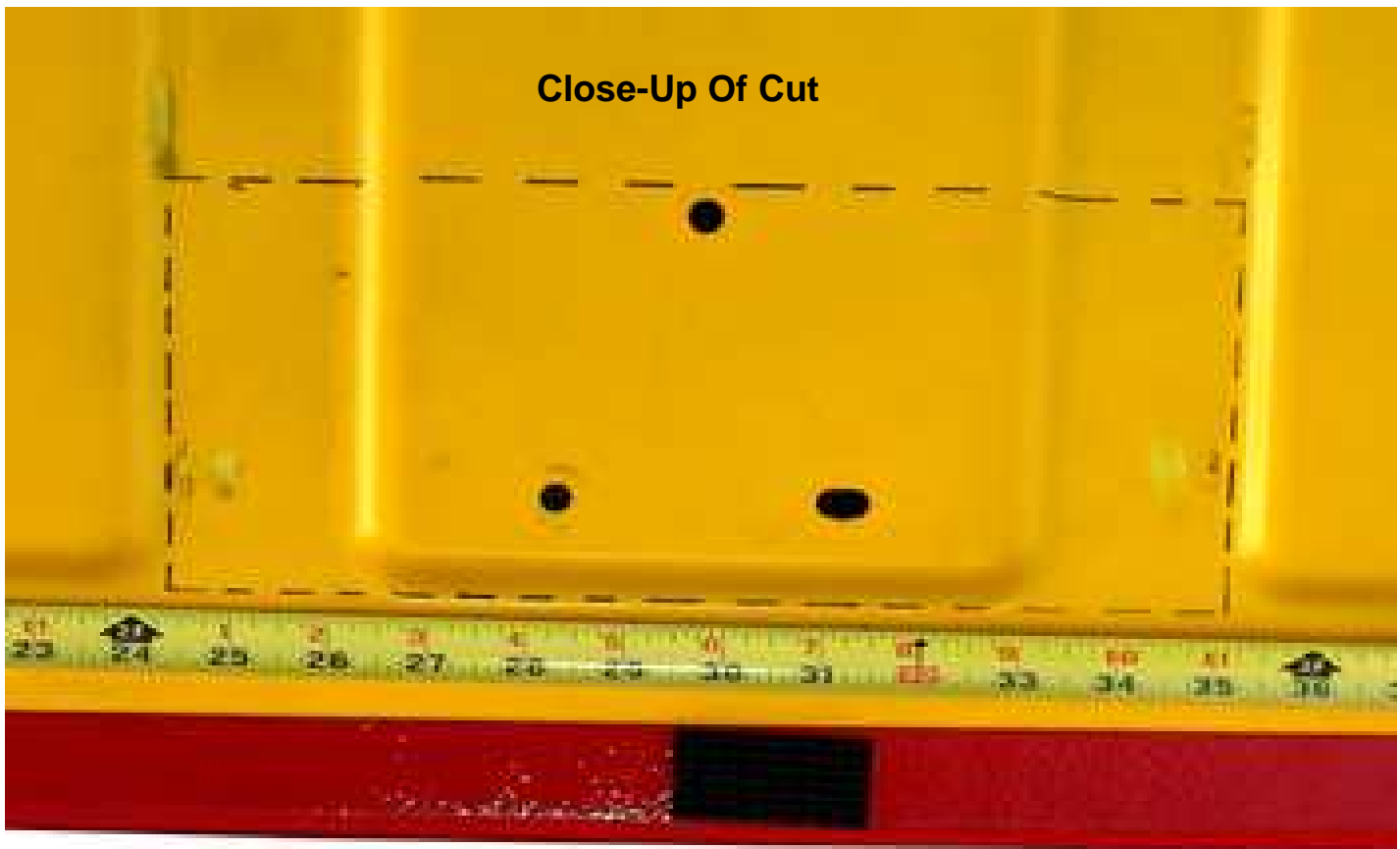
****** MEASURE TWICE - CUT ONCE ******

1. With a pencil or marking pen and a tape measure, measure in from each side 24 3/8". Mark the vertical lines. See photo below

PHOTO

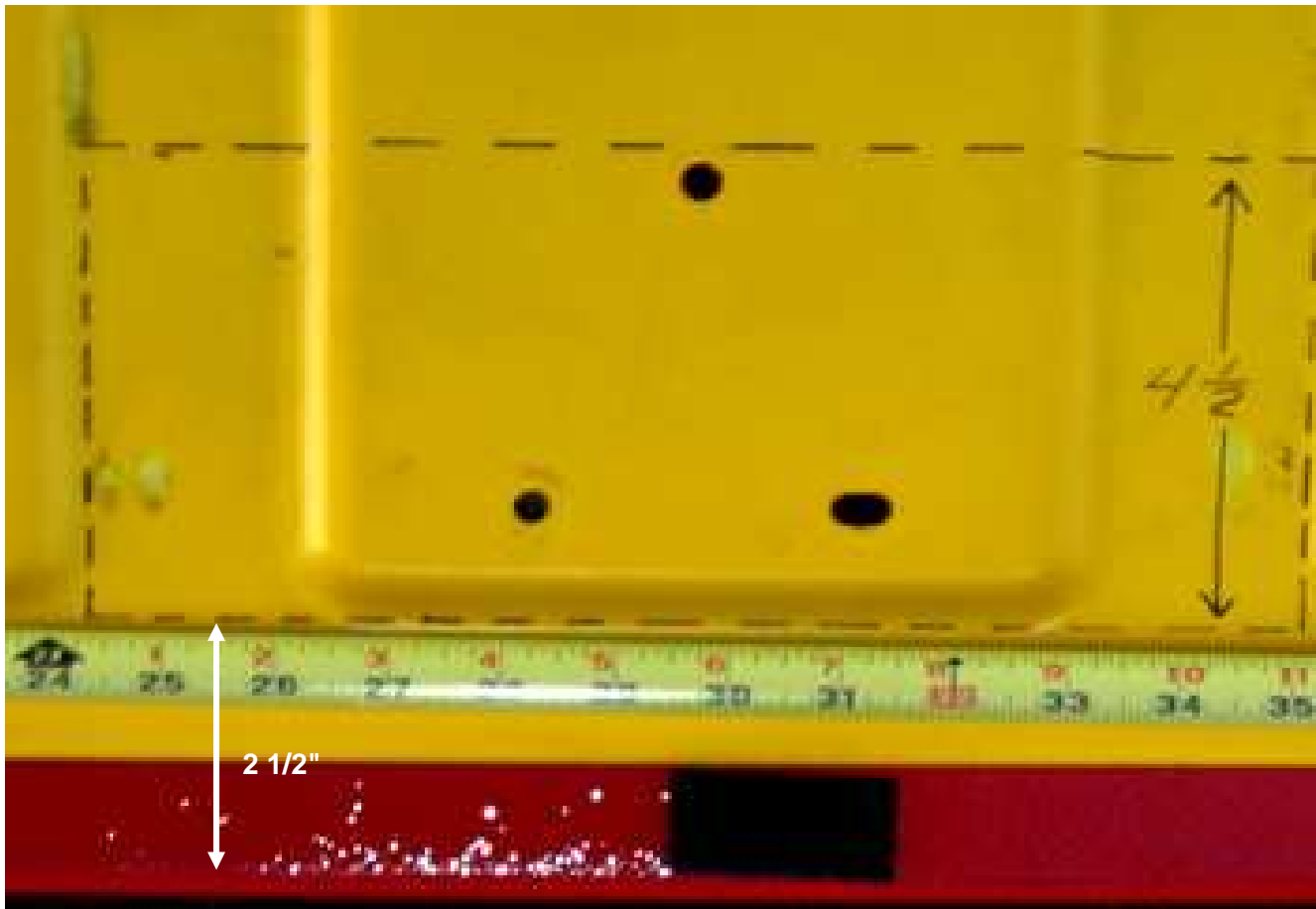


Close-Up Of Cut



2. Measure down from the top edge of tailgate 2 1/2" and mark the 1st horizontal line. Make your next mark 4 1/2" down from the previously marked top line. Double check your measurements. See Photo Below

PHOTO



3. With a die grinder or saber saw cut the rectangular pattern just marked out of the inside surface of tailgate **CAUTION** Use safety glasses. Be sure and file any sharp edges from the hole in the tailgate.
4. Attach the stock tailgate handle to the re-locator plate using two of the bolts removed on the two holes unline with each other. Use the supplied bolt **ONLY** in the third hole. If you have a locking handle remove lock and fix linkage into unlock position a tie strap or wire will work for this.
5. Place the relocater into the hole in the back of tailgate.
6. Adjust the plate so it is as straight as possible and drill two outside holes using a 5/32" drill bit. Install the washerhead metal screws provided into these holes through the plate (DO NOT install the remaining screws yet). Now drill the remaining holes through the relocating plate into the tailgate.
7. Remove the 2 screws and remove the relocater plate.

8. Now is the time to weld in the filler plate into the recess on the outside of tailgate. **CAUTION !!!!!** Use **ONLY** a Mig Welder (Wire Feed) for this process, any other type will distort the sheet metal badly. **NOTE:** Welding an continuous weld will cause the tailgate to warp. Tack a small area and let cool then repeat until complete. **DO NOT RUSH** Before welding all paint must be removed from the area to be welded. We very highly recommend an experience welder with light guage sheetmetal to do this operation.
9. Grind down the welds and finish off with body filler, block sand, primer andthen paint. Paint the relocater and handle as well.
10. Once the filler plate is welded in flip the tailgate over and coat the back of the inside of the welded area with some sort of rust preventing coating (Paint, Undercoat, Etc).
11. Palce the relocater plate with the handle bolted into place into the access hole and reattach the connecting rods into the nylon clips on the handle in the same location as noted in section 1 step 4.
12. Position the relocater plate in the access hole and align the holes for the metal screws. **DO NOT** install the ABS cover at this time.
13. **BEFORE** installing tailgate, check the system to make sure it is working correctly. With a screwdriver flip the right and left lock mechanisms into the lock position. Lift handle and see if they unlock. If not re-adjust the rods in the plastic clips to shorten the rod length. **TEST** again. **DO NOT** install tailgate until they are set correctly. Take your time here. Once the tailgate is installed and closed you will not be able to open easily if rods are not adjusted correctly.
14. Install the ABS cover over handle alligning the clips with the slots on the relocater.
15. Install the tailgate back onto the truck.