



INSTALLATION INSTRUCTIONS
Stillen Mesh Grill Insert, Lower
P/N: KB12241LG
2008 NISSAN ALTIMA SEDAN / COUPE

Materials supplied:

1. (3 pc) Mesh Grill Insert, Lower
2. (20) No.6 Screws
3. (20) Washers

Equipment needed:

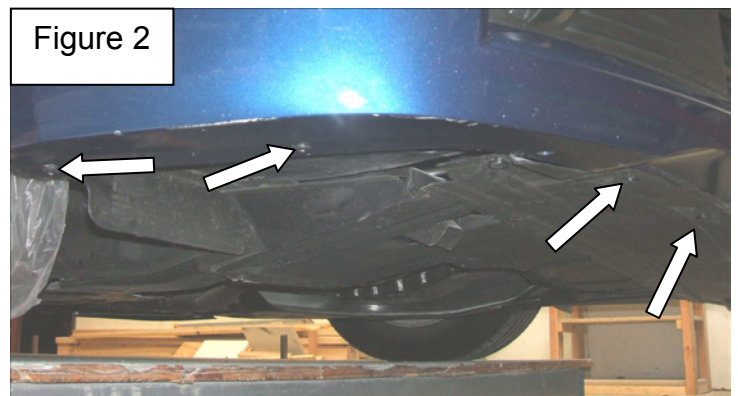
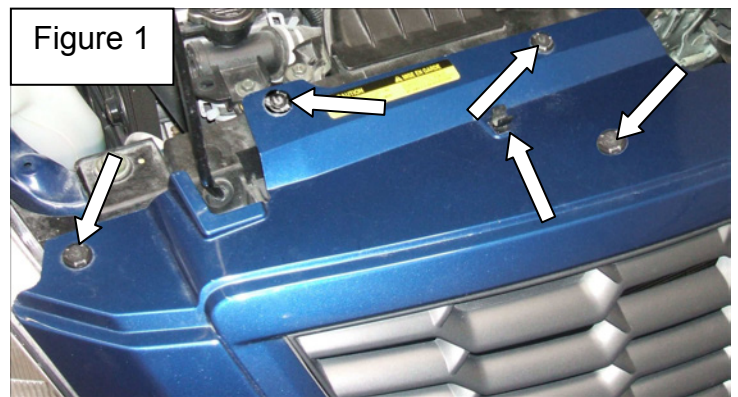
1. Assorted sockets and wrenches
2. Drill & Assorted Drill bits

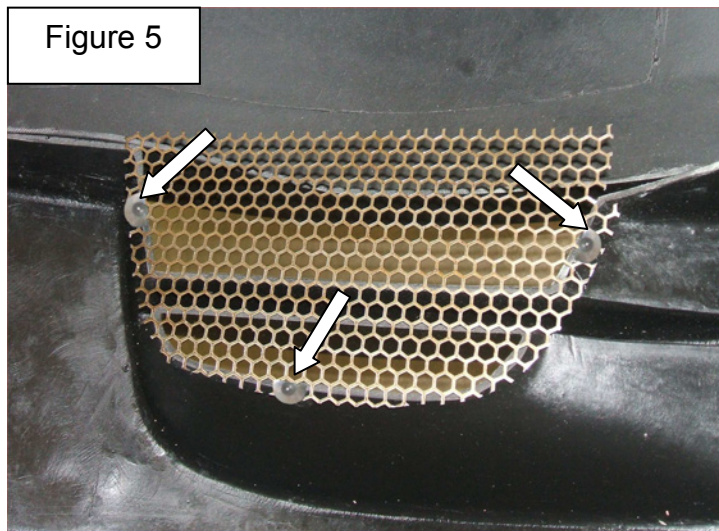
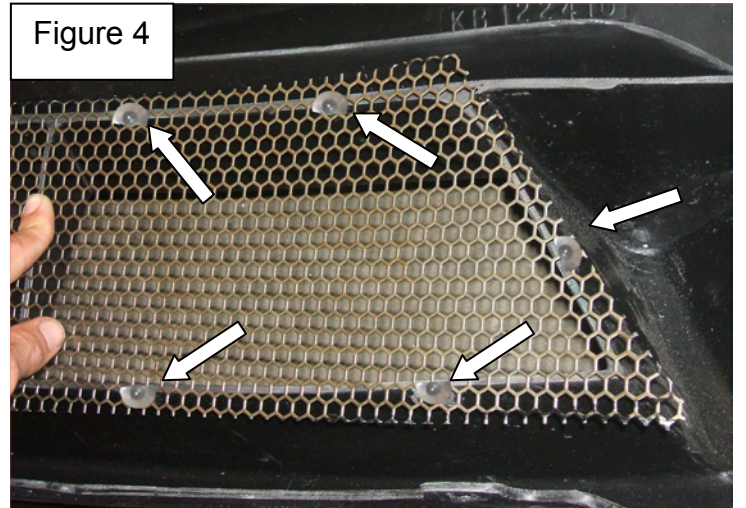
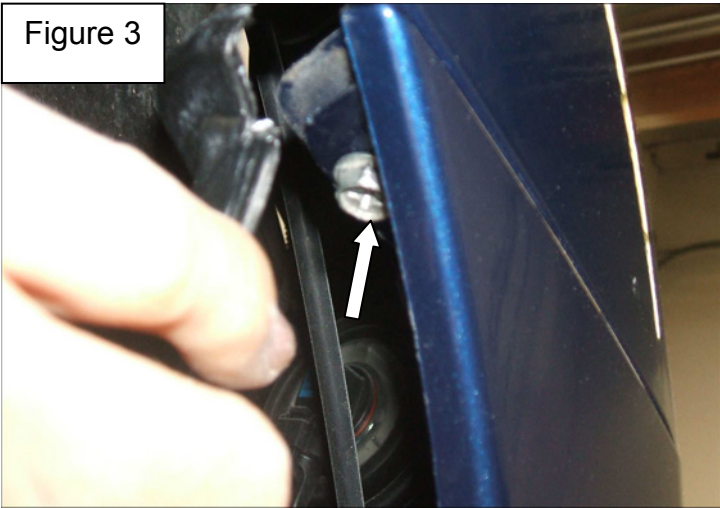


WARNING:
IF YOU ARE NOT EXPERIENCED IN THE AREA OF BODY REPAIR WE STRONGLY URGE THAT YOU REFER THIS INSTALLATION TO YOUR BODY SHOP.

INSTALL

1. First you will begin by removing the clips on the topside of front fascia (**Fig.1**). Care should be taken in not damaging the clips as they will be reused.
2. Next you will remove the screws and clips on the underside of the vehicle (**Fig.2**).
3. Next you will need to remove the screws behind the wheel well where the head lights meet the front fascia (**Fig.3**). If your car is equipped with OEM driving lights, unplug them before removing.
4. Using the provided hardware install the lower middle grill section. Make sure to use a 9/32 drill bit to make pilot holes in the bosses. See (**Fig.4**)
5. Repeat the process on the lower corner openings using the provided hardware and grills, there is a left and a right. See (**Fig.5**)
6. Reinstall your front fascia as previously removed.
7. Done!!





Rely only on high-grade car & truck custom grilles on our virtual shelves.