



INSTALLATION INSTRUCTIONS
STILLEN HI-FLOW INTAKE – SUBARU WRX
P/N 402000

Materials supplied:

1. (1) Intake Tube
2. (1) Intake Heat Shield
3. (1) MAF Sensor Harness Extension
4. (2) M6 x 1.0 x 16mm Flanged Bolts
5. (2) M4 x 0.7 x 12mm Machine Screws
6. (2) M4 Flat Washers
7. (2) M4 Lock Washers
8. (1)K&N Air Filter with clamp

Equipment needed:

1. Assorted sockets and wrenches
2. +,- Screwdriver
3. Assorted pliers



WARNING:

**IF YOU ARE NOT EXPERIENCED IN THE AREA OF
AUTOMOTIVE MECHANICS WE STRONGLY URGE THAT
YOU REFER THIS INSTALLATION TO YOUR MECHANIC.**

WARNING!!!!!! – DO NOT ATTEMPT TO START VEHICLE WITH THE MASS AIR SENSOR DISCONNECTED, FAILURE TO FOLLOW WARNING WILL RESULT IN FUTURE DIAGNOSTIC REPAIRS.

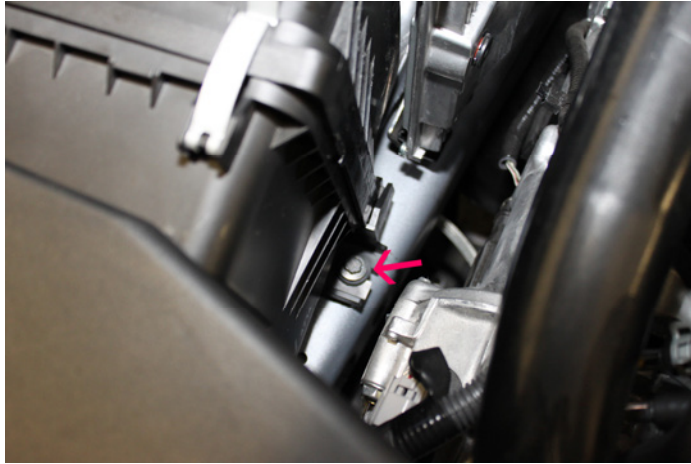
1. Disconnect the battery.
2. Remove the two plastic retainers for the factory air inlet scoop and remove the scoop.



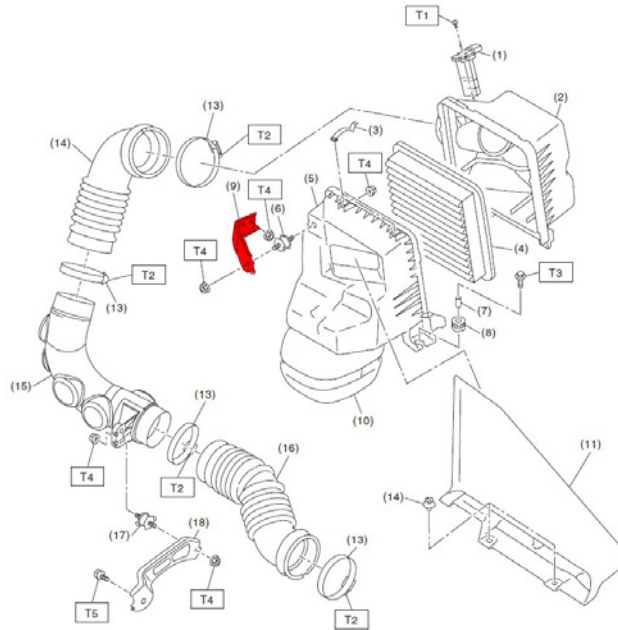
3. Undo the metal clips on the air box.



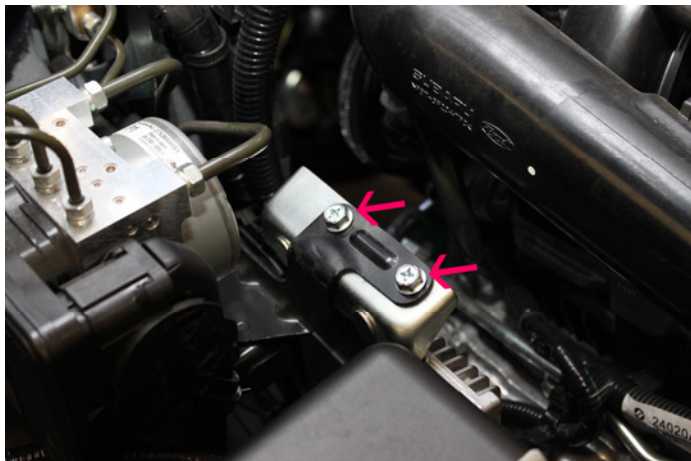
4. Remove the bolt retaining the front section of the air box from the frame rail.



5. Remove the two nuts retaining the air box bracket (# 9 in the drawing below) and air box assembly as well as the nut connecting the bracket to the air box then remove the bracket.



6. Remove the front section of the air box from the car.
7. Remove the two bolts retaining the computer box and shift the computer away from the air box.



8. Disconnect the MAF sensor harness.



9. Remove the eight plastic retainers and one screw from the passenger side fender liner.



10. Pull the fender liner down to access the lower intake tube bracket. Remove the nut retaining the bracket as well as the clamp.



11. Remove the rear air box and air inlet assembly.



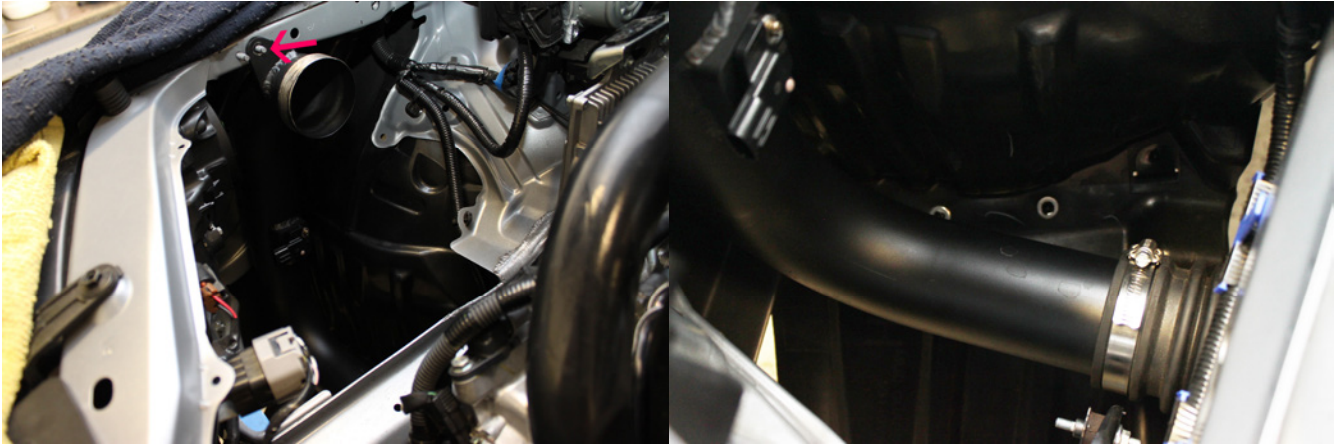
12. Remove the two screws retaining the MAF sensor from the factory air box and remove the sensor. Be sure to avoid touching the sensor element or hitting the sensor as it is very delicate.



13. Install the MAF sensor into the STILLEN air intake and install the M4 x 0.7 x 12mm machine screws, M4 washers to secure the sensor. Torque the screws to 0.7 ft-lbs.



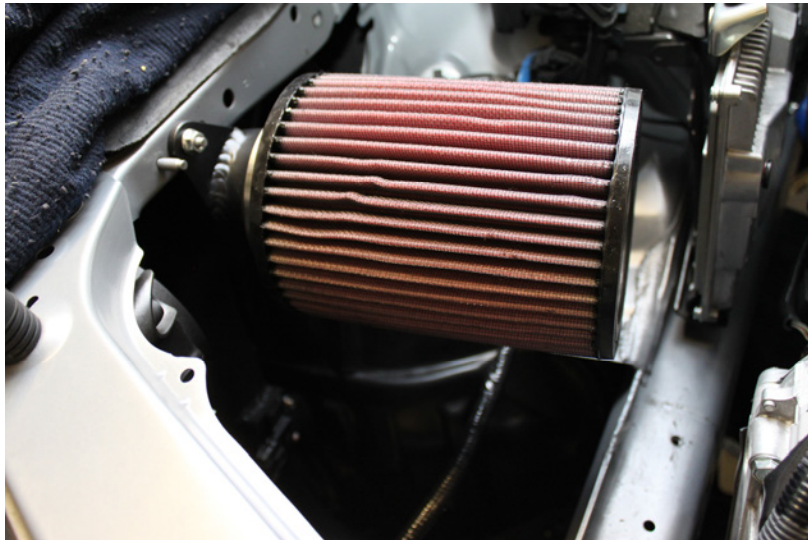
14. Install the STILLEN air intake tube to the factory turbo inlet duct and slide the mounting ear onto the rear stud that retained the front air box bracket and secure with one of the factory nuts. Tighten the lower intake clamp.



15. Install the MAF sensor harness extension onto the MAF sensor and install the other end to the factory harness.



16. Install the K&N Filter with clamp.



17. Install the heat shield and loosely install the two supplied bolts. The mounting hole for the frame rail is slotted to allow adjustment.



18. Reinstall the factory inlet scoop and adjust the heat shield to align the cutout with the inlet scoop. Tighten the two bolts for the heat shield.



19. Reinstall the clips for the fender liner. Reinstall the two bolts for the Computer. Reconnect the battery.
20. You are finished with the installation and can now enjoy the benefits of the STILLEN Hi-Flow Intake System.