



INSTALLATION INSTRUCTIONS
STILLEN AUTOMATIC TRANSMISSION COOLER
02-06 NISSAN ALTIMA /MAXIMA
P/N 400865

Materials supplied:

1. 1 ea.- Transmission cooler & bracket assembly
2. 1 ea.- Hose assembly
3. 3 ea.- 11" tie wrap
4. 4 ea.- #8 self-tapping screw
5. 2 ea.- Hose clamps
6. Installation instructions

Equipment / Supplies required:

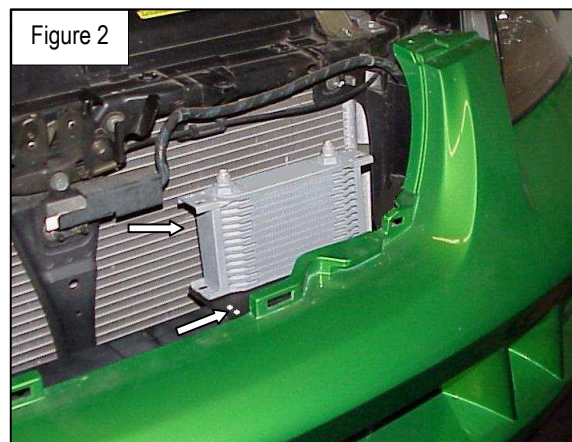
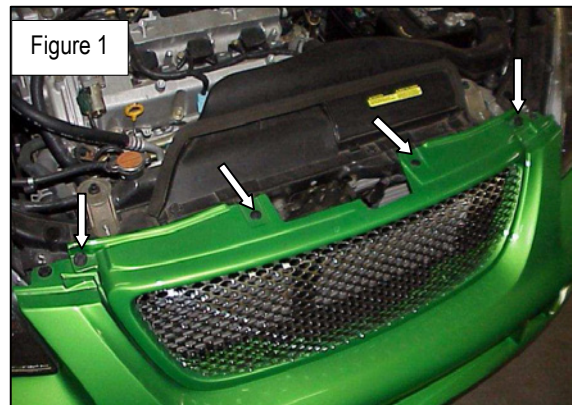
1. METRIC assorted sockets and wrenches
2. +,- Screwdriver & Assorted pliers
3. Power Drill 3/16" drill bit
4. Floor jack & Safety stands



WARNING:
IF YOU ARE NOT EXPERIENCED IN THE
AREA OF AUTOMOTIVE MECHANICS WE
STRONGLY URGE THAT YOU REFER THIS
INSTALLATION TO YOUR MECHANIC.

Installation:

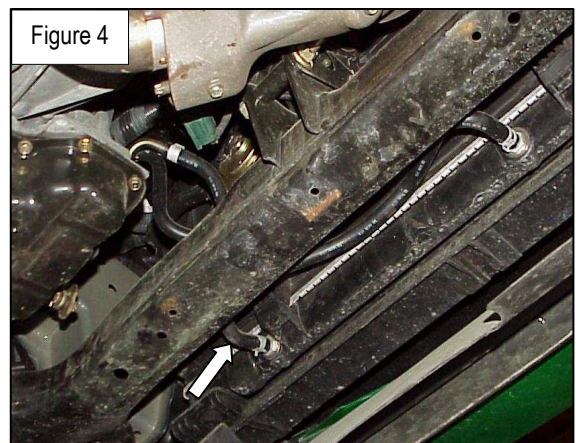
1. You will need to lift the vehicle with either an approved lift, or a garage floor jack and safety stands.
2. Remove the grill from the vehicle at this time and set aside carefully. See **(fig.1)**
3. You will be locating the cooler in the location shown in **(fig.2)** Use the provided hardware to mount it. Make sure when you mount it that you set it back far enough to clear the grill when it is reinstalled. Use a 3/16 drill bit to make a pilot hole for the self-tapping screws.
4. At this time you will have to remove the splash pan to get access to your transmission lines. See **(fig.3)**
5. There will be 2 lines coming out of the transmission which go to your radiator for cooling. We will be intercepting one of these lines with the cooler. See **(fig.4)** to see which line.
6. Disconnect hose indicated in step 5 to route your new cooler hose. It is recommended that you have some shop towels or rags handy as it can get a bit messy when doing this step. You can set this hose aside or throw it away as it will not be reused.



7. You will now be installing the hoses at this time. The hose coming out of the radiator will be going to the cooler. It will run along the top of the cross member towards the baffle of the air box. At this point it will make a 180 deg turn and come back towards the front of the fascia and go through the indicated area shown in **(fig.5)** and up to the cooler. The return line off the cooler will be going back to the transmission hard line that you disconnected earlier. It will follow the same path as the feed line of the cooler. Use the provided hose clamps to make a secure seal on the new lines installed.



8. When everything is installed and secure we recommend at this time that you start your vehicle to make sure there are no leaks in the system. Once everything is satisfactory you can button everything back up by reinstalling your splash pan and grill.



9. Next you will have to top off your transmission fluid as it will be able to hold more with the added cooler. Use the dipstick as a guide of how much you will have to add.

10. Done!! Enjoy the benefits of your new *STILLEN* Transmission cooler.

