



INSTALLATION INSTRUCTIONS

Stillen Body Kit
P/N 107011, 107018, 107050, 107059
07+ NISSAN VERSA

Materials supplied:

1. Front lip spoiler / Roof wing / Rear valance / Mid wing
2. 9" double-sided tape per piece
3. (4) (2) ea. 5/32" rivets (Lip spoiler, Rear valance only)

Equipment needed:

1. Assorted sockets and wrenches
2. +,- Screwdriver
3. Drill motor and assorted drill bits
4. Rivet gun
5. Sandpaper/Schotchbrite
6. Adhesive Promoter (optional)



WARNING:
**IF YOU ARE NOT EXPERIENCED IN THE
AREA OF BODY REPAIR WE STRONGLY
URGE THAT YOU REFER THIS
INSTALLATION TO YOUR BODY SHOP.**

NOTE: Preparation of the urethane surfaces to be painted is important to achieve proper fit and finish. However, these components are flexible and attention should be paid to the type of paint chosen for these applications.

NOTES ABOUT INSTALLATION, CLEANING, AND PAINTING

Pre-fit all pieces to the vehicle. Once you are assured that you have the right aero kit you may proceed. If you don't please call *Stillen* right away. We highly recommend using masking tape anywhere the aero kit may be touching the vehicle body to prevent scratches during the pre-fit.

- A. Kit is best installed when the front of the vehicle is supported on jackstands, with the front wheels removed.
- B. Do any sanding, filing, or spacing necessary (before painting) for a clean tight fit. Spending the extra time now will assure you of a perfect "factory" installation.

Painting urethane.

Urethane components require a special cleaning and painting procedure to obtain a proper finish. Once the urethane components have been properly pre-fitted **CLEAN AND SCRUB THEM!** Using plenty of hot water, plenty of scouring powder (like AJAX[®] or COMET[®]) and a #7447 Scotch Brite[®] pad. Scrub each piece thoroughly until there are no shiny spots. Scrub all surfaces especially the backside top sections that will be against the body. You will be applying double sided tape to this area so **clean and sand it!** The goal is to achieve an even dull finish on all surfaces to be painted. After you've finished scrubbing the parts completely repeat the procedure one more time. If this is not done properly the paint will not stick!

Any automotive primer will provide excellent adhesion to the part if the surface is properly prepared, however, **we do not recommend using lacquer primer on urethane components due to its rigidity.** Elastomeric or acrylic primers can be used but elastomeric primers, due to the flex agent added, are preferred over acrylic primers. Light sanding is recommended after primer has dried and before final color painting.

On all the *Stillen* urethane components, the preferred procedures are:

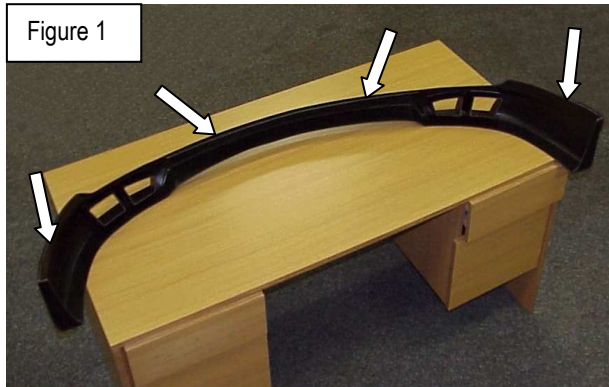
- A. Pre-fit, sand, and shape.
- B. Paint
- C. Install

Install

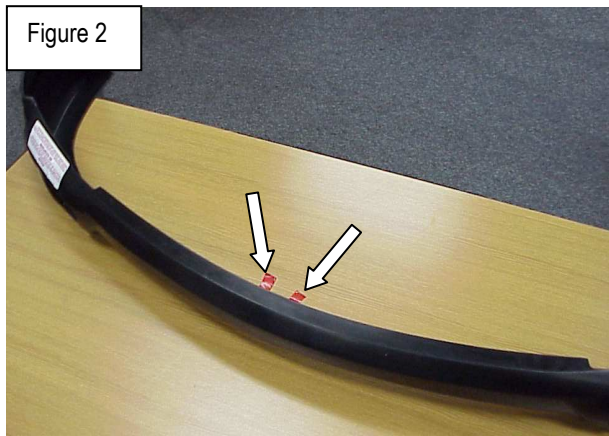
1. On the back of the front lip spoiler, roof wing, rear valance there is an indentation. This is where you will apply the double stick tape (fig.1). This surface has to be CLEAN and DRY for the tape to properly adhere. A residual-free cleaner is recommended (e.g. Wurth[™] Clean-Solve) to prepare the surface. The surface of the vehicle should also be cleaned for proper adhesion. For BEST results after cleaning, use of an adhesion promoter such as 3M[™] part #06396 should be applied to wherever tape will be used. When applying tape, make sure the tape is smooth and wrinkle free. It is best to use 3 or 4 different pieces on long sections rather than 1 piece.
2. After applying tape, pull back approx. 1 inch of protective covering on tape from each end (fig 2). Make sure film is sticking out (fig 3). Place lip spoiler, roof wing, rear valance, mid wing GENTLY on vehicle and make sure you have it positioned correctly. It is good to have a friend help with this. If adhesion promoter was used you will NOT get a second chance! While holding it in position, pull the tabs you created while applying light downward pressure. Continue this taking care not to tear off the tabs by pulling too hard. After all film is removed, apply firm pressure all around to insure the tape has bonded properly.

3. Using the supplied rivets secure the ends of the lip spoiler / rear valance to the body. Using a 5/32" bit, drill 1 or 2 holes on each end of the spoiler and attach at the spot shown in (fig.4)

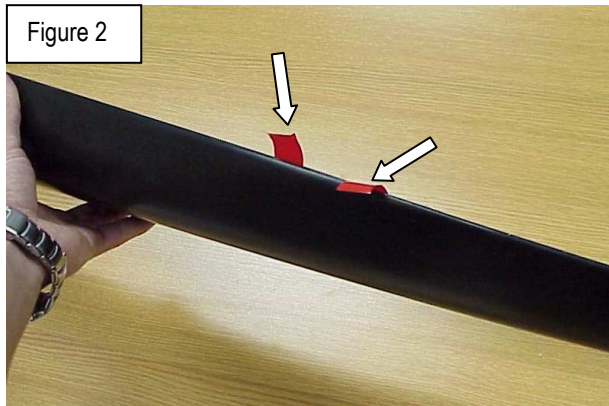
Lip Spoiler



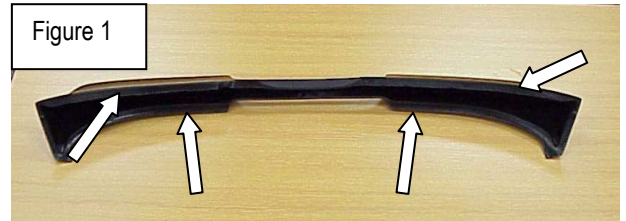
Lip Spoiler



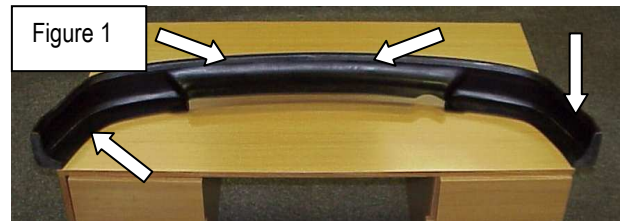
Rear Valance



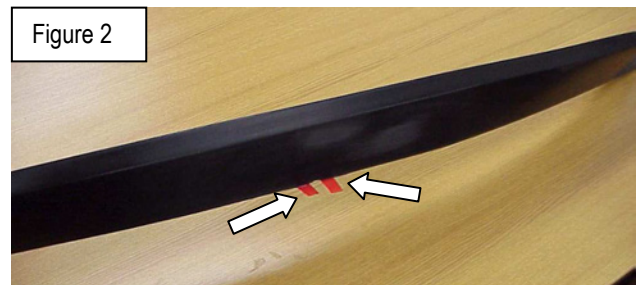
Roof Wing



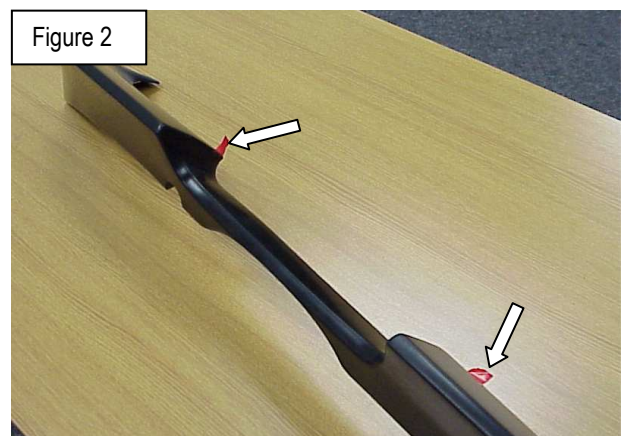
Rear Valance



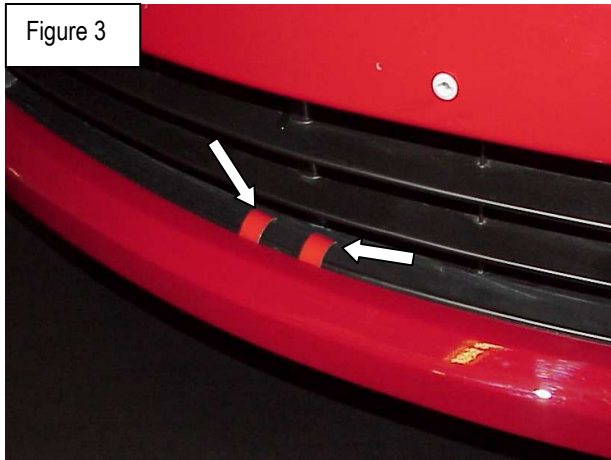
Mid Wing



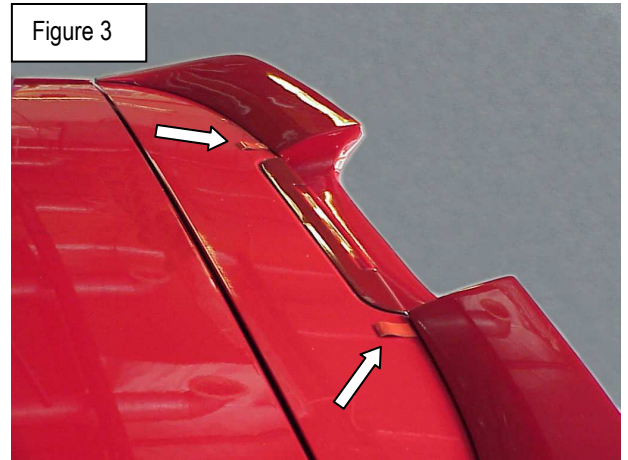
Roof Wing



Lip Spoiler



Roof Wing



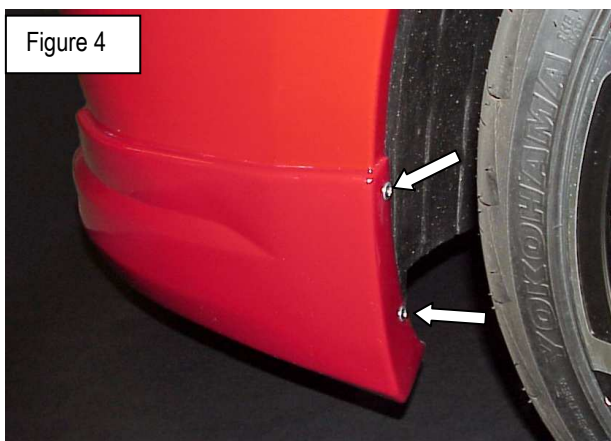
Rear Valance



Mid Wing



Lip Spoiler



Rear Valance

