



INSTALLATION INSTRUCTIONS

STILLEN SPLITTER

Infiniti G-35

P/N 1036030SP

Materials supplied:

1. (1) Splitter
2. (8) 1" Self tapping screws
3. (8) Self tapping screws
4. (2) Turnbuckles hardware

Equipment needed:

1. Assorted sockets and wrenches
2. +,- Screwdriver
3. Assorted pliers/clamps
4. Drill & drill bits



WARNING:

IF YOU ARE NOT EXPERIENCED IN THE AREA OF AUTOMOTIVE MECHANICS WE STRONGLY URGE THAT YOU REFER THIS INSTALLATION TO YOUR MECHANIC.

Note: If you are planning to paint your splitter, please see page 4.

1. Jack up the front of the car and support with jack stands. A lift would be ideal.

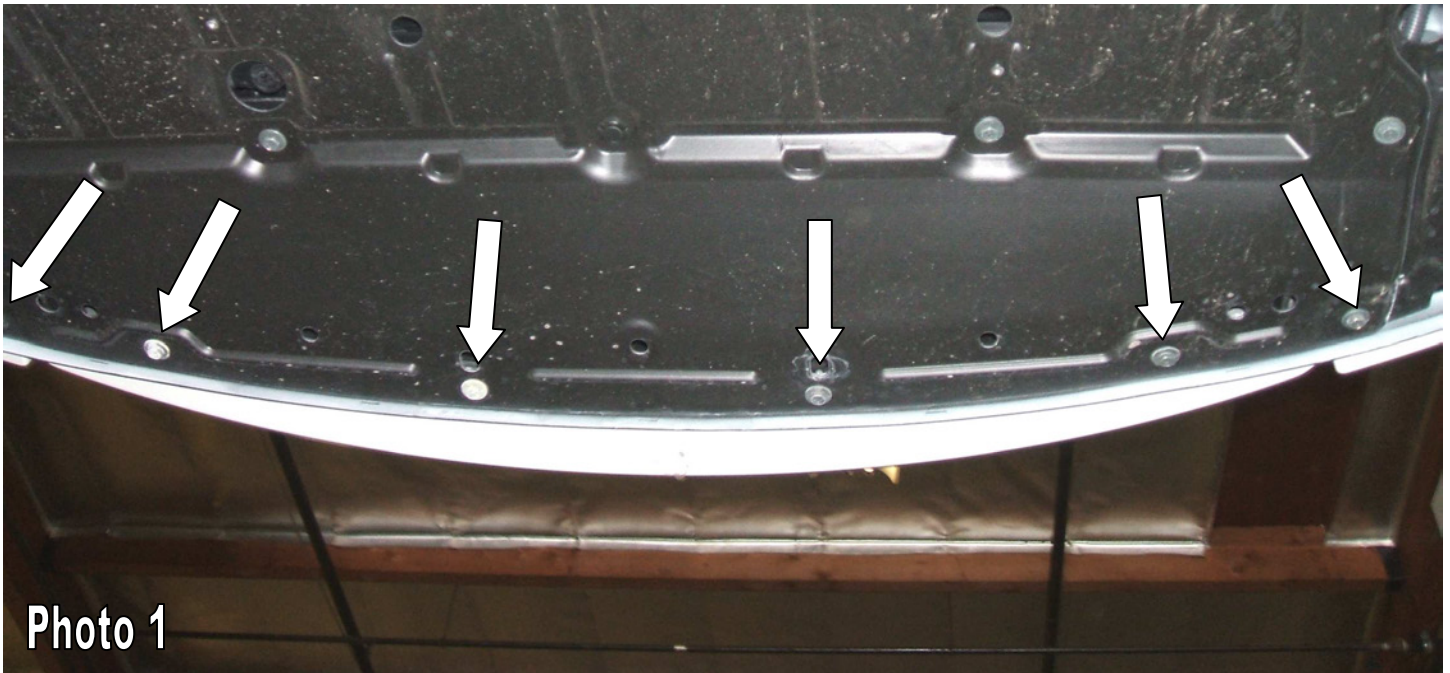


Photo 1

2. Remove the 6 bolts holding leading edge of the lower engine pan to the fascia and the 4 end bolts holding the wheel well liners to the fascia. (the 6 center bolts are shown in Photo 1)
3. Hold the splitter in place and mark the drill holes on the splitter tabs. Using a 1/2" drill bit, drill the 10 holes.
4. On the top of the splitter you will see groves on the front edges of the ends. This is the groove you will be installing the double sided tape. Lightly sand the groove and clean using Adhesive promoter.

5. Peel 1 side of the tape and adhere it in the groove. Peel back about 2” of the protective film on the tape and position it as in Photo 2. Repeat on the other side.

Photo 2



6. Prep the area of the fascia where the tape will be contacting using adhesive promoter.
7. Install the splitter using the 10 screws removed in step 2. Leave the bolts loose and the tape tabs sticking out. (Photo 3)
8. Make sure the splitter is positioned correctly and slowly peel the tabs of the protective film off the tape and firmly press the splitter into place.



Photo 3

9. Install the self tapping screws through the bottom of the splitter, through the tape, and into the fascia. 3 will go on each end (Photo 4), and 1 in each of the center supports.
10. Tighten the 10 bolts.
11. Test fit stainless turnbuckle, and mark mounting hole locations for drilling. Drill small pilot holes through fascia and splitter and mount turnbuckle as shown, repeat on opposite side. (Photo 5)
12. Adjust turnbuckles to eliminate play and stiffen up splitter. Do not over tighten them or the splitter will bow.
13. Done!



NOTE: Preparation of the urethane surfaces to be painted is important to achieve proper fit and finish. However, these components are flexible and attention should be paid to the type of paint chosen for these applications.

NOTES ABOUT INSTALLATION, CLEANING, AND PAINTING

Pre-fit all pieces to the vehicle. Once you are assured that you have the right aero kit you may proceed. If you don't please call *Stillen* right away. We highly recommend using masking tape anywhere the aero kit may be touching the vehicle body to prevent scratches during the pre-fit.

- A. Kit is best installed when the wheel on the side you are working on is removed. This applies to front and rear.
- B. Do any sanding, filing, or spacing necessary (before painting) for a clean tight fit. Spending the extra time now will assure you of a perfect "factory" installation.

Painting urethane.

Urethane components require a special cleaning and painting procedure to obtain a proper finish. Once the urethane components have been properly pre-fitted **CLEAN AND SCRUB THEM!** Using plenty of hot water, plenty of scouring powder (like AJAX[®] or COMET[®]) and a #7447 Scotch Brite[®] pad. Scrub each piece thoroughly until there are no shiny spots. Scrub all surfaces especially the backside top sections that will be against the body. You will be applying double sided tape to this area so **clean and sand it!** The goal is to achieve an even dull finish on all surfaces to be painted. After you've finished scrubbing the parts completely repeat the procedure one more time. If this is not done properly the paint will not stick!

Any automotive primer will provide excellent adhesion to the part if the surface is properly prepared, however, **we do not recommend using lacquer primer on urethane components due to its rigidity.** Elastomeric or acrylic primers can be used but elastomeric primers, due to the flex agent added, are preferred over acrylic primers. Light sanding is recommended after primer has dried and before final color painting.

On all the *Stillen* urethane components, the preferred procedures are:

- A. Pre-fit, sand, and shape.
- B. Paint
- C. Install