

INSTALLATION INSTRUCTIONS

STILLEN splitter
350Z
P/N 1035010SP

Materials supplied:

1. (1) Splitter
2. (6) M6 x 25mm hex bolts
3. (6) M6 nuts
4. (12) 6mm washers
5. (8) Self tapping screws
6. (2) Turnbuckles

Equipment needed:

1. Assorted sockets and wrenches
2. +,- Screwdriver
3. Assorted pliers/clamps
4. Drill & drill bits



WARNING:

IF YOU ARE NOT EXPERIENCED IN THE AREA OF AUTOMOTIVE MECHANICS WE STRONGLY URGE THAT YOU REFER THIS INSTALLATION TO YOUR MECHANIC.

1. Jack up the front of the car and support with jack stands. A lift would be ideal.
2. Practice fit splitter onto fascia using supplied picture (fig 1) as a guide.
3. Once satisfied with placement use duct tape to hold splitter in place and drill holes for the M6 bolts through both the splitter and fascia in 3 places on either side of splitter opening (fig 2), as well as the center hole for the center support.
4. Install M6 bolts with washer through splitter/fascia and tighten with M6 nut and washer. The longer bolt will go through the center support.
5. Test fit stainless turnbuckle (fig 3), and mark mounting hole locations for drilling. Drill small pilot holes through fascia and splitter and mount turnbuckle as shown, repeat on opposite side.
6. Adjust turnbuckles to eliminate play and stiffen up splitter.
7. Done!



FIG 1



FIG 3

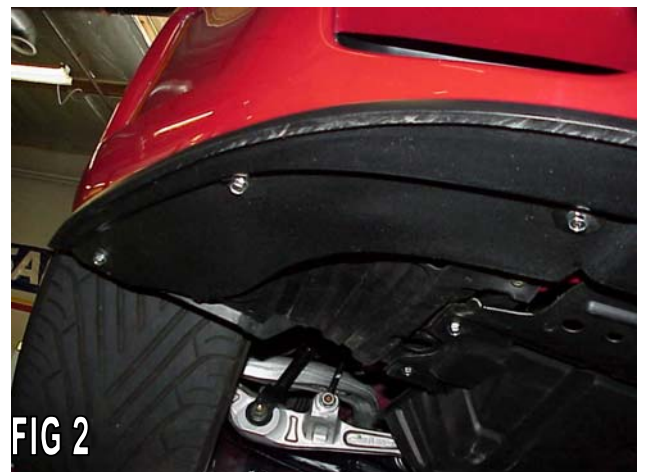


FIG 2