

INSTALLATION INSTRUCTIONS

SIDE BAR 05-13 NISSAN FRONTIER

PARTS LIST:

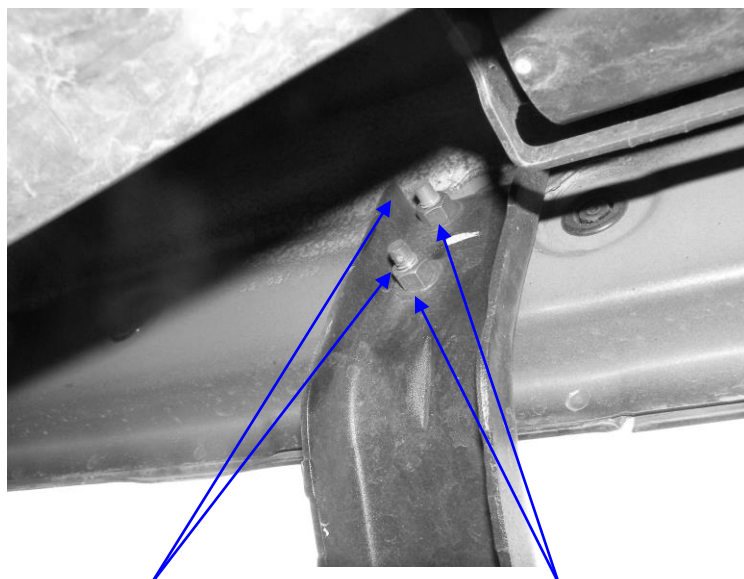
1	Passenger/Right Side Bar	8	8-1.25mm x 30mm Hex Head Bolts
1	Driver/Left Side Bar	16	8X22mm O.D.X1.5mm Flat Washers
1	Front Passenger/Right Side Mounting Bracket	16	8mm Lock Washers
1	Rear Passenger/Right Side Mounting Bracket	8	8-1.25mm Nuts
1	Front Driver/Left Side Mounting Bracket		
1	Rear Driver/Left Side Mounting Bracket		

PROCEDURE:

1. REMOVE CONTENTS FROM BOX. VERIFY ALL PARTS ARE PRESENT. READ INSTRUCTIONS CAREFULLY.
2. On the passenger/right side, if equipped, remove the existing running board by removing the four nuts holding mount to inside of body. Install the two passenger/right side mounting brackets with the removed stock nuts, leave nuts loose for now. NOTE: Holes in brackets are off set, install with holes towards front of truck, passenger/right side shown. See Fig. #1
3. If not equipped with factory running boards – then use the four supplied 8mm nuts, washers & lock washers to install mounting brackets to truck.
4. Repeat procedures 2 & 3 for driver/left side.
5. Install side bar onto mounting brackets using four 8X25mm hex head bolts, four 8mm lock washers & four 8mm flat washers. Leave bolts loose – short end whole pattern installs towards the front of truck, passenger/right side shown.
6. Repeat procedure #5 on driver/left side.
7. Level and adjust side bars as desired and tighten.
8. Do periodic inspections to the installation to make sure that all hardware is secure and tight.

FIG. #1PASSENGER SIDE SHOWN

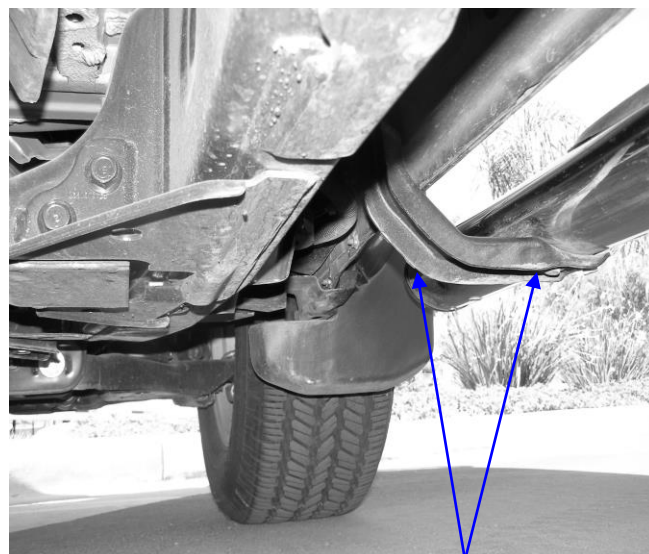
FIG. #2 PASSENGER SIDE SHOWN



EXISTING NUTS

NOTE: If vehicle is not equipped with factory Sidebars use the included
8mm Hex Nuts
8mm Lock Washers
8mm Flat Washers

OFF CENTER HOLES



SHORT END HOLE PATTERN