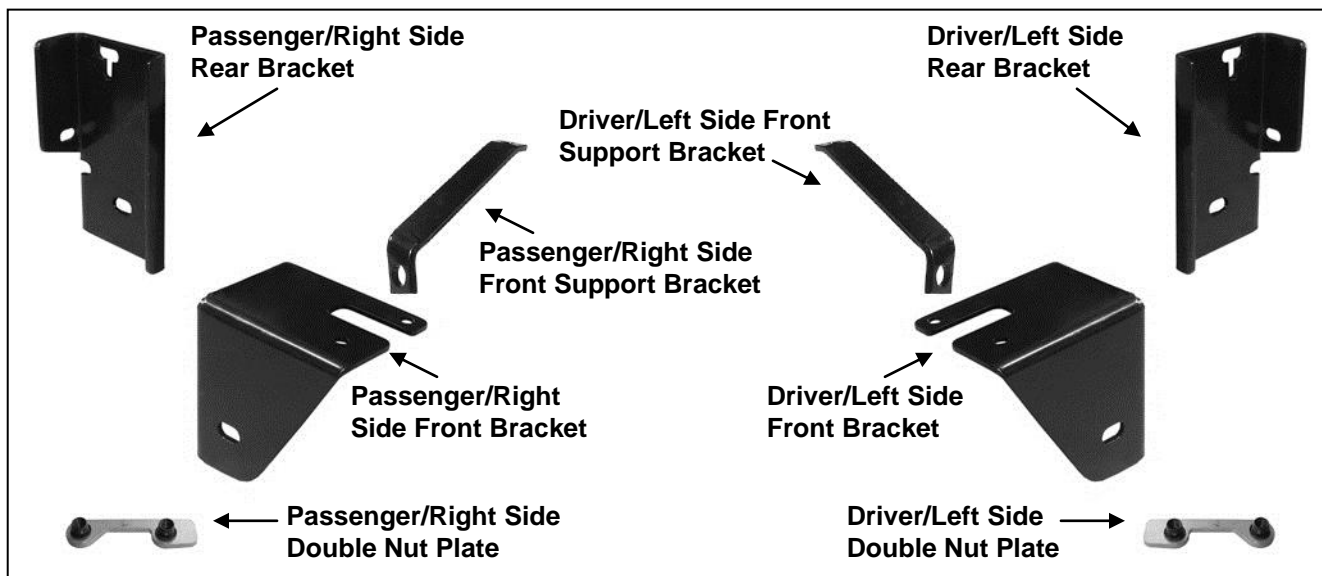


PARTS LIST:

1	Driver/Left Sidebar	1	Driver/Left Side 10-1.50mm Double Nut Plate
1	Passenger/Right Sidebar	1	Passenger/Right Side 10-1.50mm Double Nut Plate
1	Driver/Left Side Front Mounting Bracket	10	10-1.50mm x 30mm Hex Bolts
1	Passenger/Right Side Front Mounting Bracket	10	10mm Lock Washers
1	Driver/Left Side Front Support Bracket	16	10mm x 20mm OD x 2mm Flat Washers
1	Passenger/Right Side Front Support Bracket	6	10mm Hex Nuts
1	Driver/Left Side Rear Mounting Bracket	4	1/2" x 2" Hex Bolts
1	Passenger/Right Side Rear Mounting Bracket	4	1/2" Lock Washers
		4	1/2" x 1-1/2" OD x 1/8" Flat Washers



PROCEDURE:

- 1. REMOVE CONTENTS FROM BOX. VERIFY ALL PARTS ARE PRESENT. READ INSTRUCTIONS CAREFULLY BEFORE STARTING INSTALLATION.**
- From under the passenger side of the vehicle, locate the three factory holes (one large, two small) in the frame channel next to the front body mount. Insert the smaller end of the passenger side Double Nut Plate through the large hole in the frame and line it up with the smaller hole toward the front, **(Figure 1)**.
- Hang the passenger side front Bracket from the Double Nut Plate with the included (2) 10mm x 30mm Hex Bolts, (2) 10mm Lock Washers and (2) 10mm Flat Washers, **(Figure 2)**.
- Locate the factory hole on the edge of the floor panel behind the passenger front body mount. Select the passenger side Front Support Bracket. Bolt the flat end of the Support Bracket to the factory hole using the included (1) 10mm x 30mm Hex Bolt, (1) 10mm Lock Washer, (2) 10mm Flat Washers and (1) 10mm Hex Nut, **(Figure 3)**. Line up the bent end of the Support Bracket with the back of the front Bracket. Leave Support Bracket hardware loose at this time.
- Next, move towards the rear of the vehicle. Insert the passenger side rear Bracket up and between the inner side panel and the outer body of the vehicle, **(Figure 4 & 5)**. Line up the hole in the 90° bend with the factory hole in the cab toward the bed and secure it using the included (1) 10mm x 30mm Hex Bolt, (1) 10mm Lock Washer, (2) 10mm Flat Washers and (1) 10mm Hex Nut. Attach the upper mounting location in the Rear Bracket to factory hole in the inner side panel using the included (1) 10mm x 30mm Hex Bolt, (1) 10mm Lock Washer, (2) 10mm Flat Washers and (1) 10mm Hex Nut, **(Figure 4 & 5)**. Do not tighten hardware at this time. **NOTE:** On some models, it may be necessary to drill a hole through

SIDEBAR

99-11 FORD RANGER REG CAB & SUPER CAB 2 DR

the side panel for the hex bolts. **IMPORTANT:** Any cutting or drilling tool may break or shatter. Government regulations require safety glasses & equipment at all times when cutting or drilling.

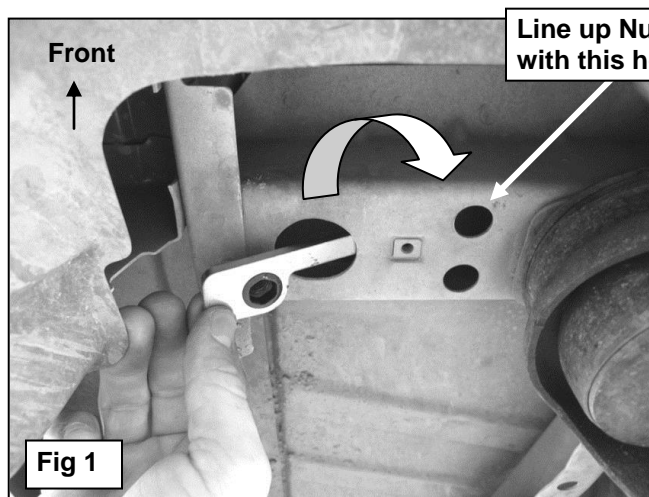
6. Hold the passenger Sidebar up to the front Bracket. Insert (1) 1/2" x 2" Hex Bolt, (1) 1/2" Lock Washer, and (1) 1/2" Flat Washer through the Support Bracket, the Frame Bracket and into the Sidebar, (**Figure 6**). Do not tighten at this time. **NOTE:** To correctly identify the front of the Sidebar, note that the front mounting leg on the Sidebar is 3/4" longer than the rear mounting leg.
7. Once the front end of the Sidebar is loosely installed, attach the rear leg of the Sidebar to the rear Mounting Bracket using the included (1) 1/2" x 2" Hex Bolt, (1) 1/2" Lock Washer and (1) 1/2" Flat Washer, (**Figure 7**). Do not tighten hardware at this time.
8. Level and adjust the Sidebar and tighten all hardware.
9. Repeat steps 2-8 for driver Sidebar installation.
10. Do periodic inspections to the installation to make sure that all hardware is secure and tight.

To protect your investment, wax this product after installing. Regular waxing is recommended to add a protective layer over the finish. Do not use any type of polish or wax that may contain abrasives that could damage the finish.

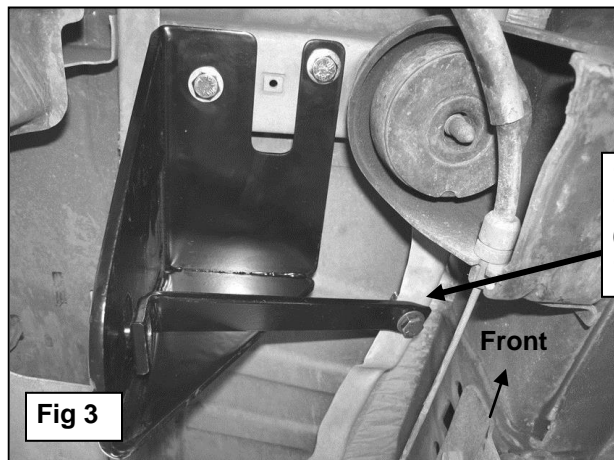
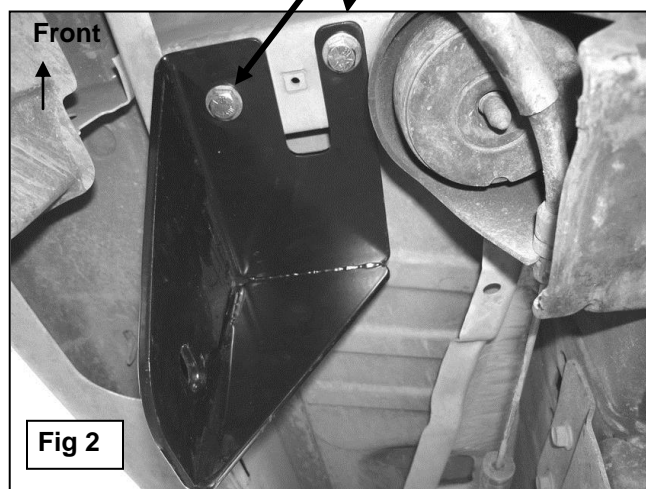
For stainless steel: Aluminum polish may be used to polish small scratches and scuffs on the finish. Mild soap may be used also to clean the Sidebar.

For gloss black finishes: Mild soap may be used to clean the Sidebar.

Passenger Sidebar Installation Pictured

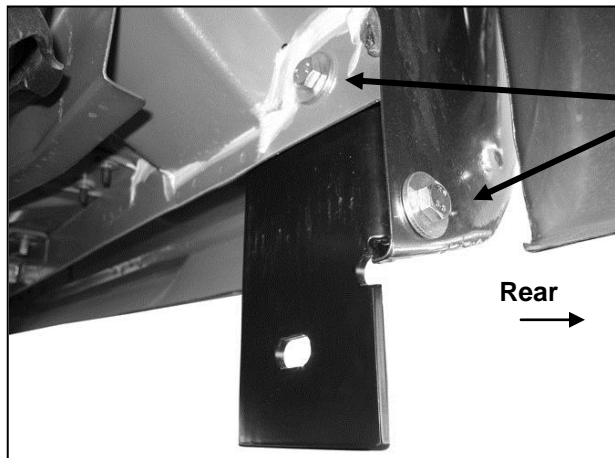


Double Nut Plate
(2) 10mm x 30mm Hex Bolts
(2) 10mm Lock Washers
(2) 10mm Flat Washers



10mm x 30mm Hex Bolt
10mm Lock Washer
(2) 10mm Flat Washers
10mm Hex Nut

Passenger Sidebar Installation Pictured



10mm x 30mm Hex Bolt
10mm Lock Washer
(2) 10mm Flat Washers
10mm Hex Nut

10mm x 30mm Hex Bolt
10mm Lock Washer
(2) 10mm Flat Washers
10mm Hex Nut



(Fig 4) Passenger Side Rear Bracket Inside View

(Fig 5) Passenger Side Rear Bracket Outside View

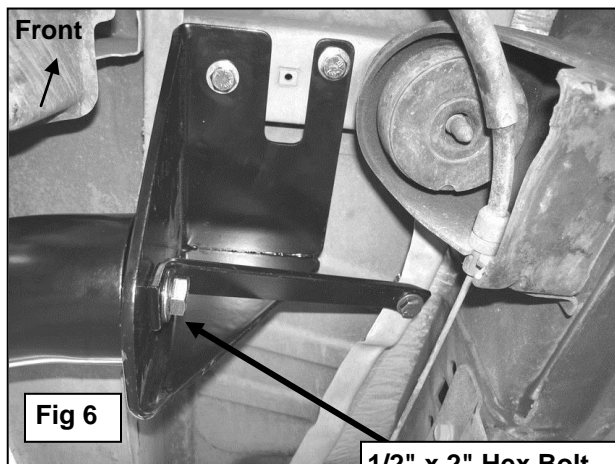
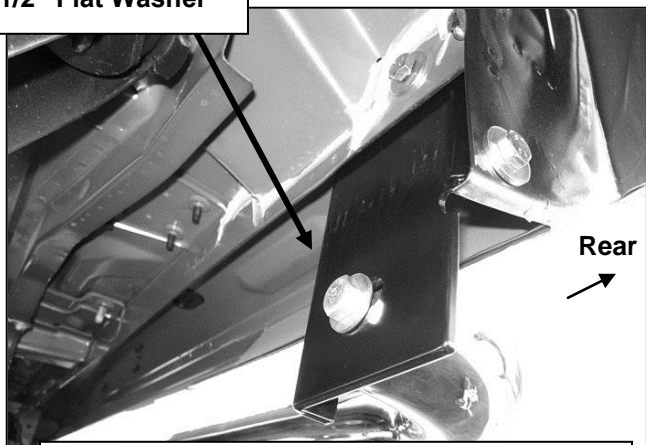


Fig 6

1/2" x 2" Hex Bolt
1/2" Lock Washer
1/2" Flat Washer

1/2" x 2" Hex Bolt
1/2" Lock Washer
1/2" Flat Washer



(Fig 7) Passenger Side Rear Bracket Inside View



Complete Installation (2-door Supercab pictured for example)