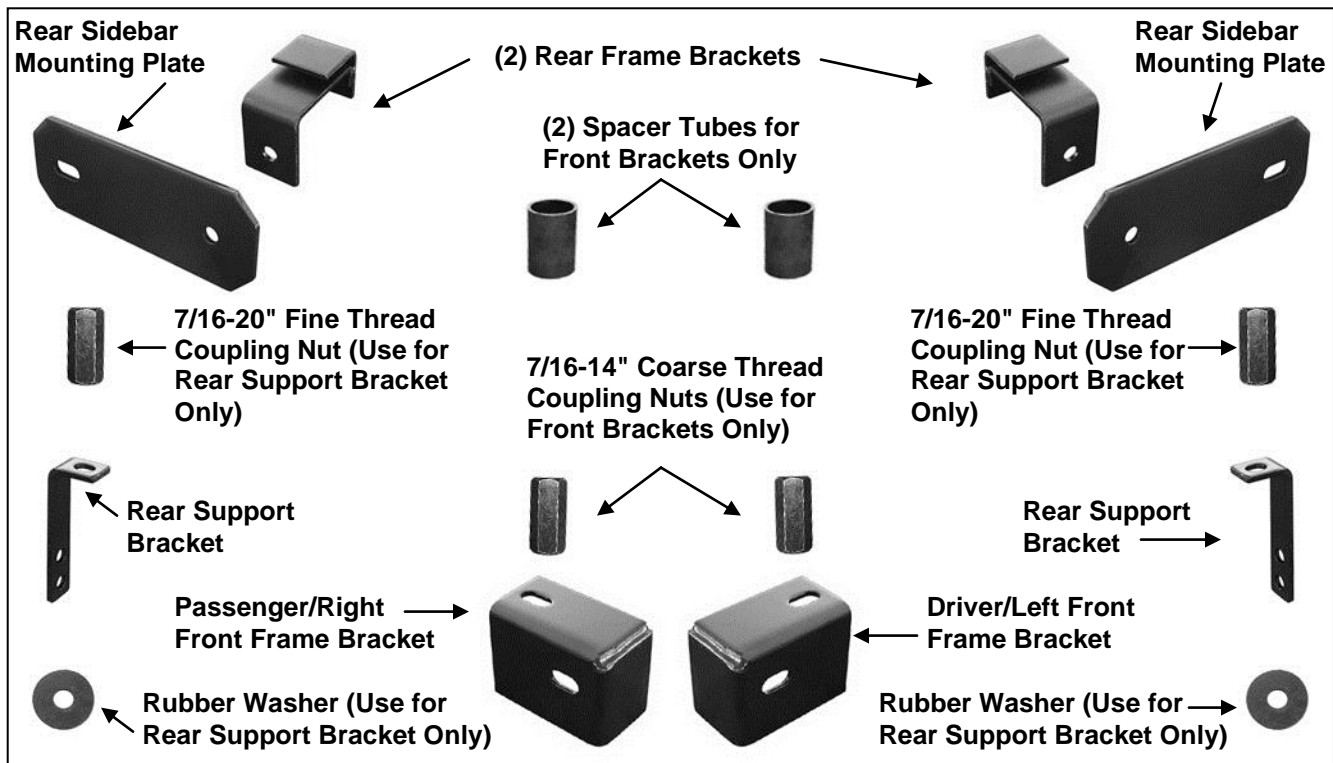


**3" BENT END SIDEBARS
1980-96 FORD REGULAR CAB F150
FULL SIZED BRONCO**

PARTS LIST:

1	Driver/Left Sidebar	2	7/16"-14 x 1-3/4" Coarse Thread Hex Bolts (Use for Front Mounting Bracket Only)
1	Passenger/Right Sidebar	2	7/16"-20 x 1-3/4" Fine Thread Hex Bolts (Use for Rear Support Brackets Only)
1	Driver/Left Front Mounting Bracket	4	7/16" x 1" OD Flat Washers
1	Passenger/Right Front Mounting Bracket	4	7/16" Lock Washers
2	Rear Frame Mounting Brackets	2	1/2" x 1-1/2" Hex Bolts (Gr. 10.9)
2	Rear Sidebar Mounting Plates	4	1/2" x 2" Hex Bolts (Gr. 10.9)
2	Rear Support Brackets	6	1/2" Lock Washers
2	Spacer Tubes (Front)	6	1/2" ID x 1 1/2" OD x 1/8" Flat Washers
2	7/16"-14 x 1-3/4" Coarse Thread Coupling Nuts (Use for Front Mounting Bracket Only)	2	1/2" Hex Nuts
2	7/16"-20 x 1-3/4" Fine Thread Coupling Nuts (Use for Rear Support Brackets Only)	4	10-1.5mm x 25mm Hex Bolts
2	Rubber Washers (Rear Support Bracket Only)	2	10mm x 20mm OD x 2mm Flat Washers
		2	10mm Lock Washers



PROCEDURE:

REMOVE CONTENTS FROM BOX. VERIFY ALL PARTS ARE PRESENT. READ INSTRUCTIONS CAREFULLY BEFORE STARTING INSTALLATION. ASSISTANCE IS RECOMMENDED.

3" BENT END SIDEBARS
1980-96 FORD REGULAR CAB F150
FULL SIZED BRONCO

1. Starting under the passenger side of the vehicle, locate the factory front body mount, **(Figure 1)**. Select (1) 7/16-14 Coarse Thread Coupling Nut. **IMPORTANT:** The hardware kit includes (4) Coupling Nuts, (2) are 7/16"-14 coarse thread and (2) are 7/16"-20 fine thread. Verify that you have selected the coarse thread Coupling Nut or damage to the body mount bolt or Coupling Nut may result. Thread the Coupling Nut onto the exposed end of the body mount bolt, **(Figure 2)**. Tighten hardware at this time.
2. Next, select the passenger side Front Mounting Bracket and (1) Tube Spacer. Slide the Tube Spacer over the Coupling Nut, **(Figure 3)**. Hold the Front Mounting Bracket in position against the Coupling Nut and Spacer. Secure the Bracket to the Coupling Nut with (1) 7/16-14 x 1-3/4" Coarse Thread Hex Bolt, (1) 7/16" Flat Washer and (1) 7/16" Lock Washer. **IMPORTANT:** Verify that you have selected the coarse thread 7/16-14 Hex Bolt or damage to the Coupling Nut may result. Do not tighten hardware at this time.
3. Move toward the rear of the vehicle. Select (1) Rear Frame Bracket. Thread (1) 10mm x 25mm Hex Bolt into the hex nut welded onto the Bracket. Slide the Bracket onto the bottom of the frame rail, **(Figure 4)**. Select (1) Rear Sidebar Mounting Plate. Bolt the Mounting Plate to the Frame Bracket with (1) 1/2" x 1-1/2" Hex Bolt, (2) 1/2" Flat Washers, (1) 1/2" Lock Washer and (1) 1/2" Hex Nut, **(Figure 5)**. Do not tighten hardware at this time.
4. Locate the exposed threaded end of the outer seat belt bolt in the bottom of the floor panel, **(Figure 6)**. Select (1) 7/16-20 Fine Thread Coupling Nut. Thread the Coupling Nut onto the threaded end of the seat belt bolt. Tighten the Coupling Nut. Select (1) Rear Support Bracket. Bolt the Support Bracket to the Coupling Nut with (1) 7/16"-20 x 1-3/4" Fine Thread Hex Bolt, (1) 7/16" Flat Washer and (1) 7/16" Lock Washer, **(Figure 7)**. **IMPORTANT:** Verify that you have selected the fine thread 7/16-20 Hex Bolt or damage to the Bolt or Coupling Nut may result. Do not tighten hardware at this time.
5. Carefully unwrap the Sidebars and select the passenger sidebar. **NOTE:** The shorter end of the tube on the Sidebar will attach to the front mounting bracket. Hold the Sidebar up in position and attach it to the front Mounting Bracket with the included (1) 1/2" x 2" Hex Bolt, (1) 1/2" Lock Washer and (1) 1/2" Flat Washer, **(Figure 3)**. Line up the hole in the rear Mounting Plate with the end of the sidebar and bolt the Sidebar to the Bracket as previously described, **(Figure 8)**. Do not tighten hardware at this time. **NOTE:** It may be necessary to move the Rear Frame Bracket to line up the Mounting Plate with the Sidebar, **(Figure 5)**. Once Brackets are in the correct position, tighten the 10mm Lock Bolt on the bottom of the Rear Frame Bracket to lock the Brackets into place on the frame channel.
6. Level and adjust the Sidebar and tighten all hardware. Line up one of the two holes in the Support Bracket with the threaded insert in the inside of the bend in the Sidebar. Insert (1) Rubber Washer between the Support Bracket and the Sidebar. Bolt the Bracket to the Sidebar with (1) 10mm x 25mm Hex Bolt, (1) 10mm Lock Washer and (1) 10mm Flat Washer, **(Figure 9)**. Tighten all hardware at this time.
7. Repeat steps 2 – 6 for driver Sidebar installation.
8. Do periodic inspections of the installation to make sure all hardware is secure and tight.

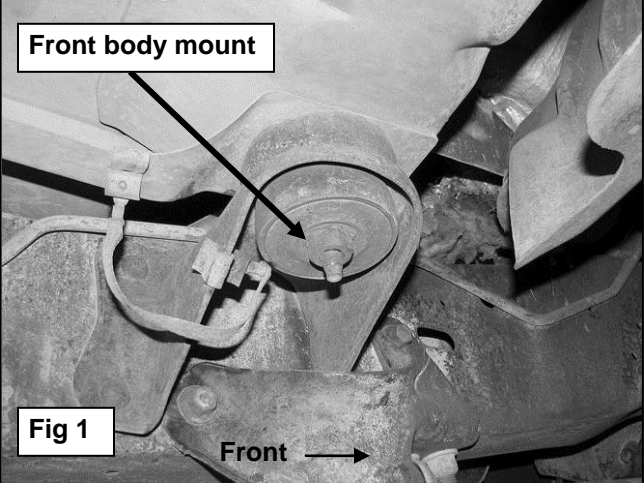
To protect your investment, wax this product after installing. Regular waxing is recommended to add a protective layer over the finish. Do not use any type of polish or wax that may contain abrasives that could damage the finish.

For stainless steel: Aluminum polish may be used to polish small scratches and scuffs on the finish. Mild soap may be used also to clean the Sidebar.

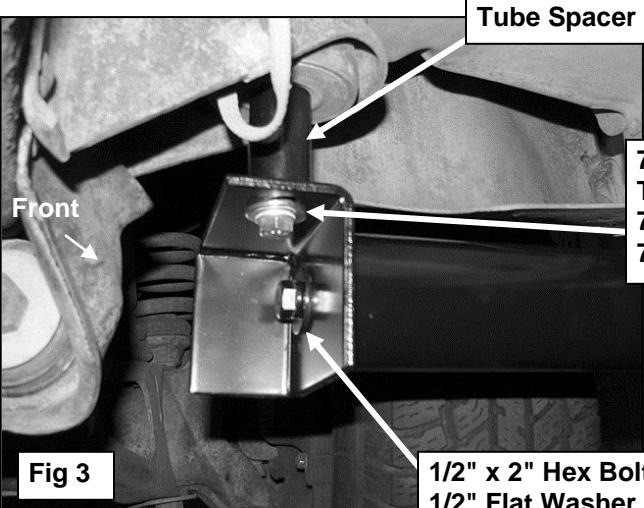
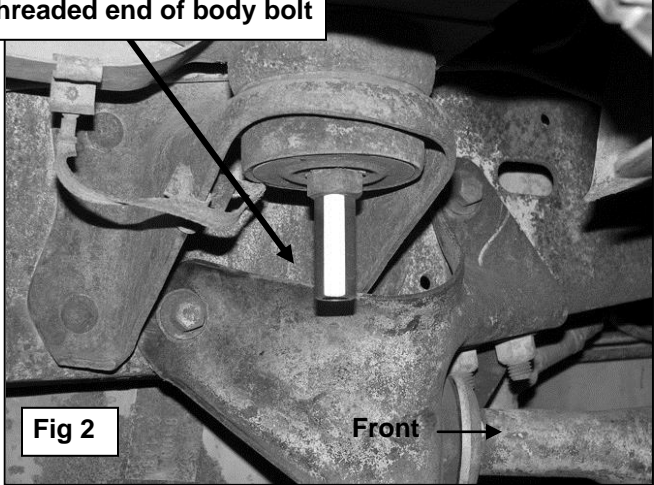
For gloss black finishes: Mild soap may be used to clean the Sidebar.

**3" BENT END SIDEBARS
1980-96 FORD REGULAR CAB F150
FULL SIZED BRONCO**

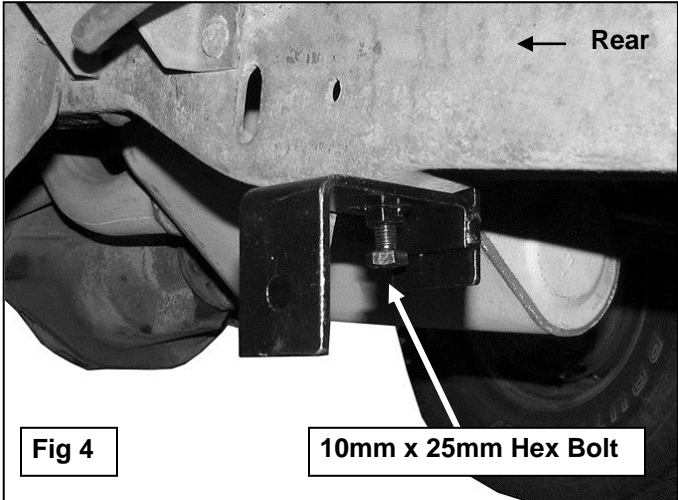
PASSENGER SIDE INSTALLATION PICTURED



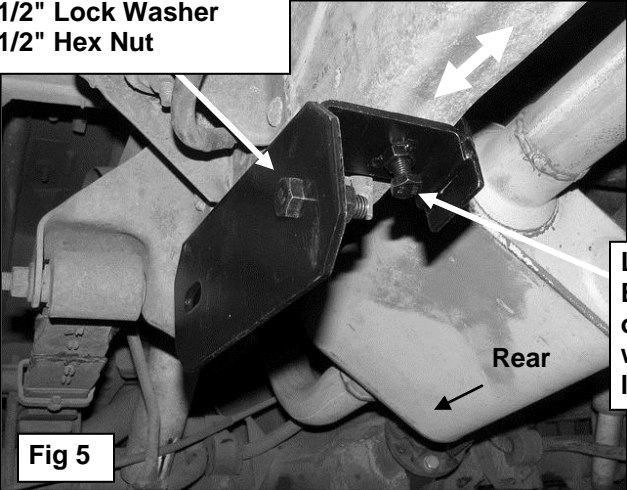
Thread the 7/16" – 14tpi
Coarse Thread Coupling Nut
onto threaded end of body bolt



1/2" x 2" Hex Bolt
1/2" Flat Washer
1/2" Lock Washer



1/2" x 1-1/2" Hex Bolt
(2) 1/2" Flat Washers
1/2" Lock Washer
1/2" Hex Nut



Loosen 10mm Locking Bolt in Frame
Bracket to slide Bracket Assembly forward
or backward on frame channel to line up
with the end of the Sidebar. Once properly
lined up, tighten 10mm Lock Bolt

**3" BENT END SIDEBARS
1980-96 FORD REGULAR CAB F150
FULL SIZED BRONCO**

PASSENGER SIDE INSTALLATION PICTURED

Thread the 7/16" – 20tpi Fine Thread Coupling Nut onto threaded end of seat belt bolt

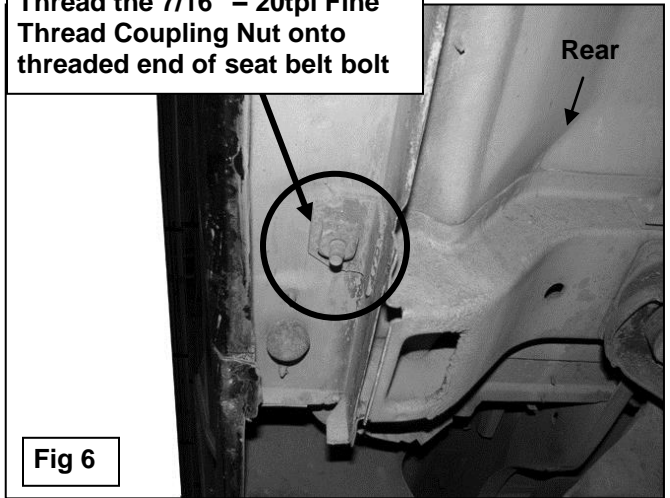
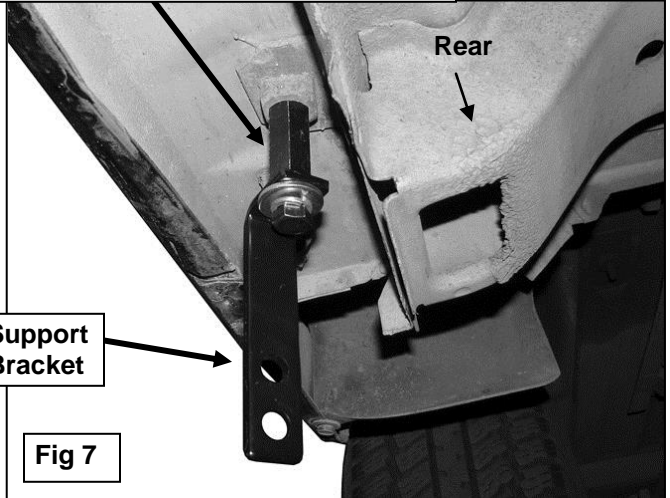


Fig 6

7/16" – 20 Fine Thread Coupling Nut
7/16" – 20 x 1-3/4" Fine Thread Hex Bolt
7/16" Flat Washer
7/16" Lock Washer



Support Bracket

Fig 7

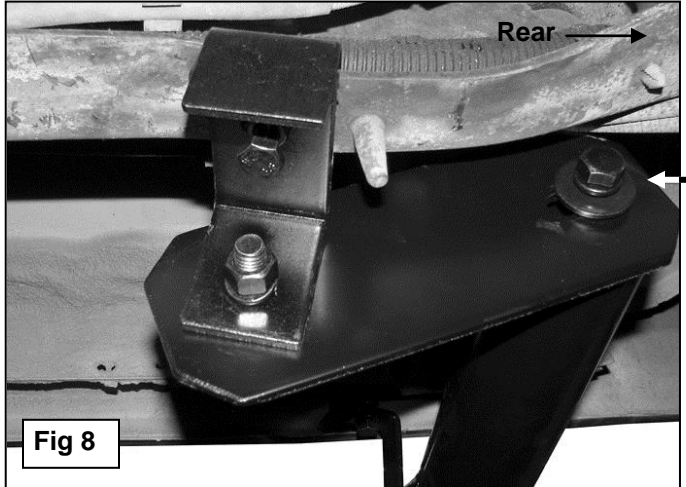


Fig 8

1/2" x 2" Hex Bolt
1/2" Flat Washer
1/2" Lock Washer

Insert Rubber Washer between Support Bracket and Sidebar

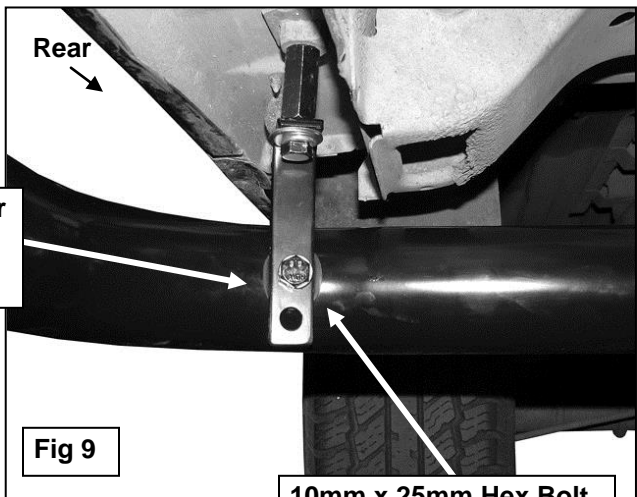


Fig 9

10mm x 25mm Hex Bolt
10mm Flat Washer
10mm Lock Washer



Complete Installation