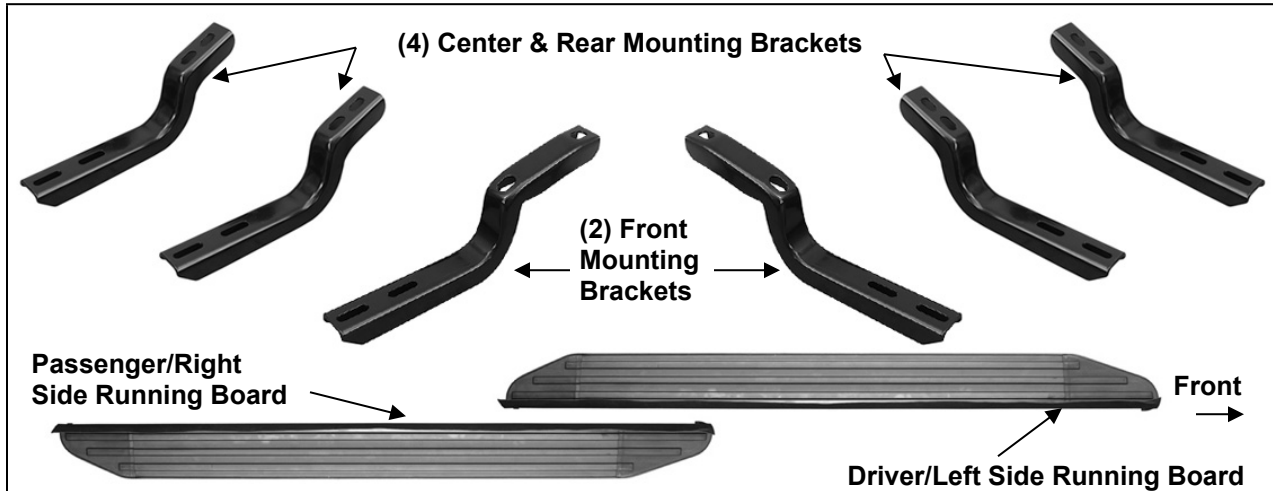


**PARTS LIST:**

1	Driver/Left Running Board	12	8mm x 22mm OD x 2mm Flat Washers
1	Passenger/Right Running Board	12	6mm x 20mm "T" bolts
2	Front Mounting Brackets	12	6mm Lock Washers
4	Center & Rear Mounting Brackets	12	6mm x 22mm OD x 2mm Flat Washers
12	8-1.25mm x 30mm Hex Bolts	12	6mm Hex Nuts
12	8mm Lock Washers		



**PROCEDURE:**

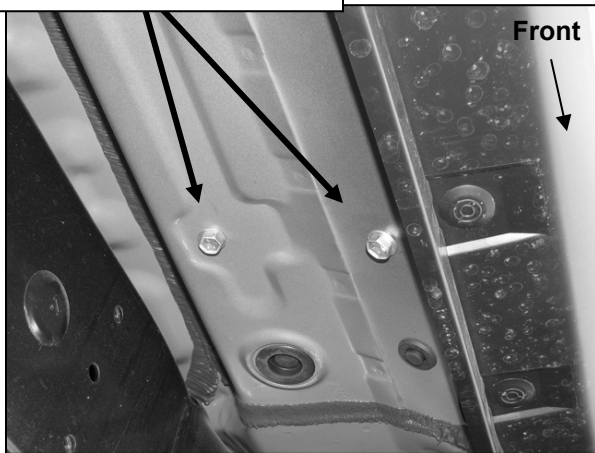
1. REMOVE CONTENTS FROM BOX. VERIFY ALL PARTS ARE PRESENT. READ INSTRUCTIONS CAREFULLY BEFORE STARTING INSTALLATION.
2. Starting on the passenger side of the vehicle, remove the existing (2) factory bolts, (or plugs), located by the front tire opening, **(Figure 1)**. Select (1) Front Mounting Bracket. Hold the Front Bracket up to the bottom of the body panel and against the pinch weld. Bolt the bracket to the factory threaded holes with the included (2) 8mm x 30mm Hex Bolts, (2) 8mm Lock Washers and (2) 8mm Flat Washers, **(Figure 2)**. Do not tighten hardware at this time.
3. The center and rear brackets are identical. Repeat the procedure as described in **Step 2** to install the Brackets in the center and rear mounting locations, **(Figures 3 & 4)**. **NOTE:** Install (1) mounting bracket at a time. Do not tighten hardware at this time.
4. Carefully unwrap and select the passenger side Running Board. Select (6) 6mm T-Bolts. From the front, insert (3) T-Bolts into each channel in the bottom of the Running Board, **(Figure 5)**. Slide the T-Bolts forward or back to line up with the (3) previously installed Mounting Brackets, **(Figure 6)**. Hold the Running Board up to the vehicle at a slight angle and gently push it into position against the end of the Brackets. **IMPORTANT:** Depending on year/model, it may be necessary to remove the plastic deflector from in front of the rear tire opening, **(Figure 3)**.
5. Attach the Running Board to the Mounting Brackets with the included (6) 6mm Flat Washers, (6) 6mm Lock Washers and (6) 6mm Hex Nuts, **(Figures 7 - 9)**. Do not tighten at this time.
6. Level and adjust the Running Board as desired and tighten all hardware. **IMPORTANT:** Leave a minimum 1/4" gap between the front of the Running Board and the front mud flap if equipped.
7. Repeat **Steps 2 – 6** for the driver side Running Board installation.
8. Do periodic inspections to the installation to make sure that all hardware is secure and tight.

**To protect your investment**, wax this product after installing. Regular waxing is recommended to add a protective layer over the finish. Do not use any type of polish or wax that may contain abrasives that could damage the finish.

**For stainless steel:** Aluminum polish may be used to polish small scratches and scuffs on the finish. Mild soap may be used also to clean the Running Board.

### Passenger Side Installation Pictured

Remove factory hex bolts



(Fig 1) Passenger side front mount pictured

(2) 8mm x 30mm Hex Bolts  
(2) 8mm Flat Washers  
(2) 8mm Lock Washers

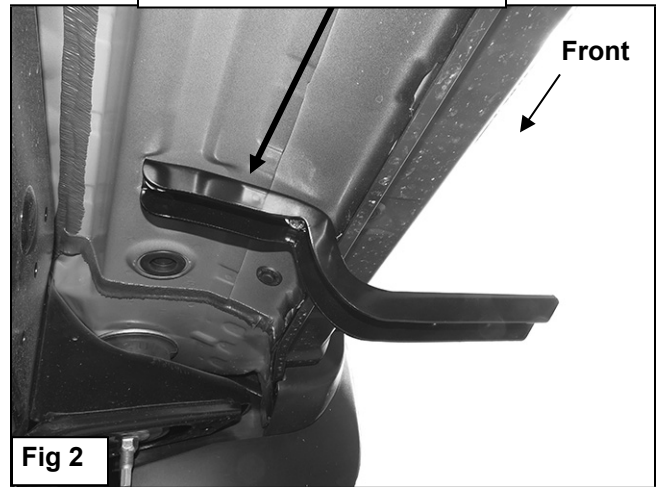


Fig 2

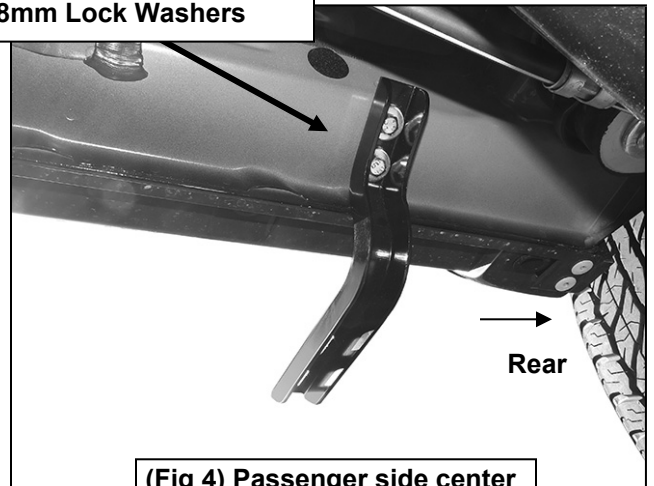
Plastic deflector



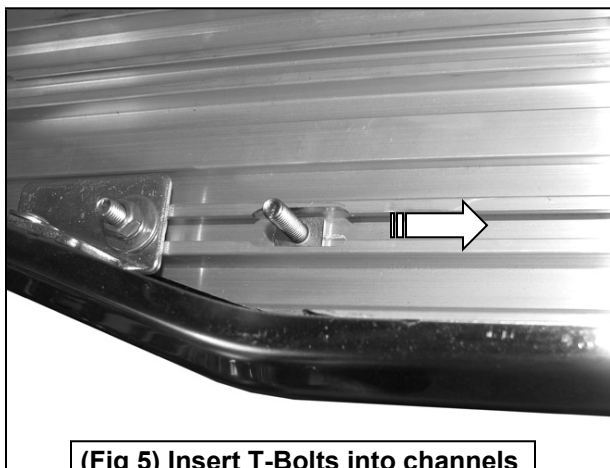
(Fig 3) Passenger side rear bracket location pictured

Remove factory hex bolts

(2) 8mm x 30mm Hex Bolts  
(2) 8mm Flat Washers  
(2) 8mm Lock Washers

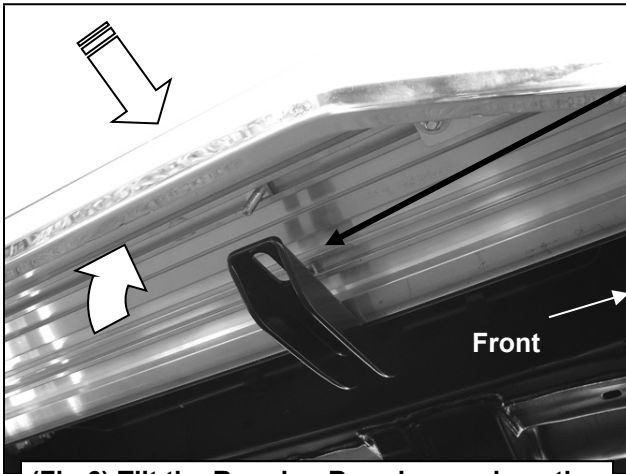


(Fig 4) Passenger side center and rear brackets pictured



(Fig 5) Insert T-Bolts into channels in bottom of Running Board

### Passenger Side Installation Pictured



Slide T-Bolt along slots to line up with Mounting Brackets

(Fig 6) Tilt the Running Board up and gently push back into position against rocker panel. Line up T-Bolts with Brackets

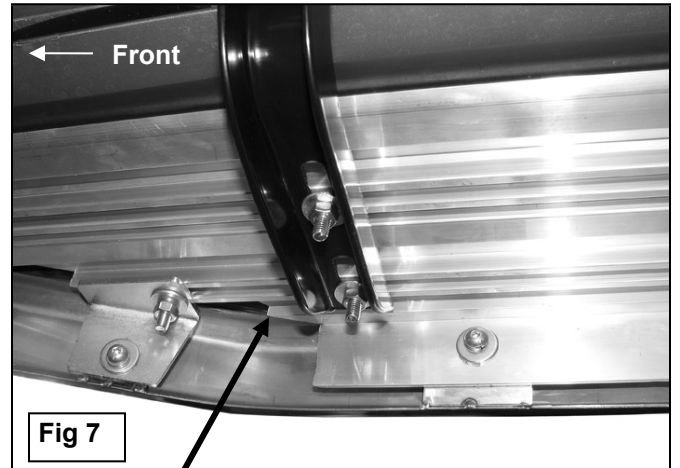
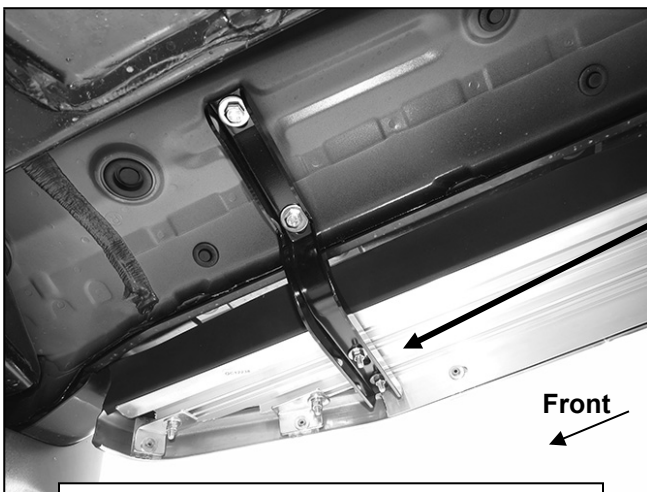
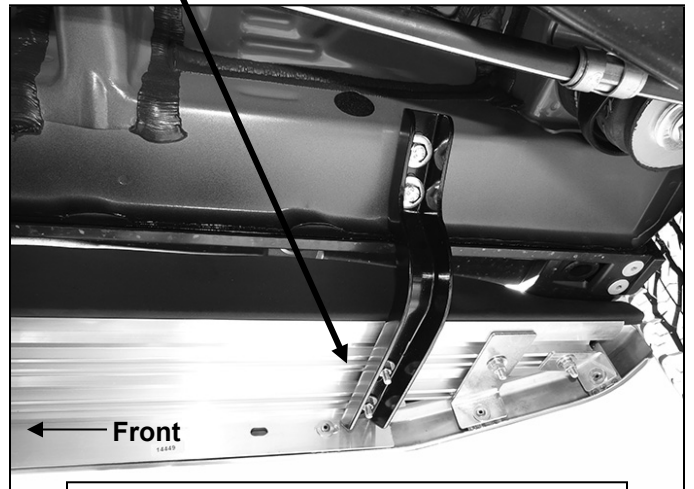


Fig 7

(2) 6mm Flat Washers  
(2) 6mm Lock Washers  
(2) 6mm Hex Nuts



(Fig 8) Front Bracket installation pictured



(Fig 9) Rear Bracket installation pictured



Complete Installation