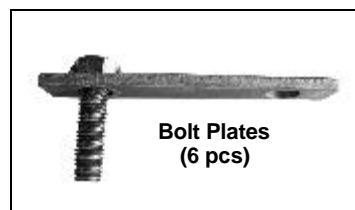


# INSTALLATION INSTRUCTIONS

**SIDEBAR  
02-07 JEEP LIBERTY  
PART #**

## PARTS LIST:

1	Driver/Left Sidebar	6	1/2" x 1 3/4" Bolt Plates
1	Passenger/Right Sidebar	6	1/2" Hex Nuts
1	Driver/Left Front Mounting Bracket	6	1/2" Lock Washers
1	Passenger/Right Front Mounting Bracket	8	1/2" ID x 1 3/8" OD x 3/32" Flat Washers
1	Driver/Left Rear Mounting Bracket	2	10-1.50mm x 30mm Hex Head Bolts
1	Passenger/Right Rear Mounting Bracket	2	10mm Lock Washers
1	Driver/Left Front Support Bracket	2	10mm Hex Nuts
1	Passenger./Right Front Support Bracket	2	10mm ID x 26mm OD x 1.5mm Flat Washers
2	12-1.75mm Hex Nuts	8	8-1.25mm Hex Head Bolts
		8	8mm Lock Washers
		8	8mm ID x 22mm OD x 1.5mm Flat Washers



## PROCEDURE:

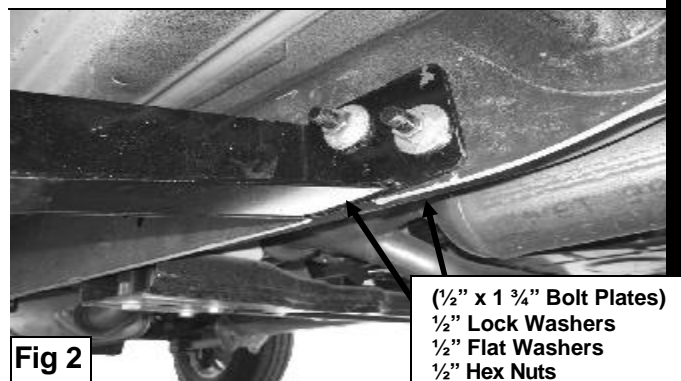
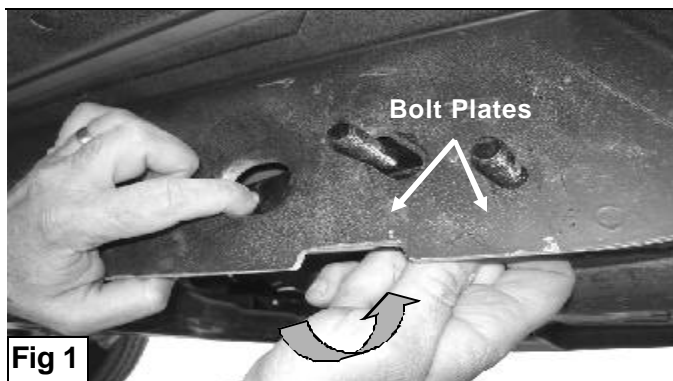
1. REMOVE CONTENTS FROM BOX. VERIFY ALL PARTS ARE PRESENT. READ INSTRUCTIONS CAREFULLY BEFORE STARTING INSTALLATION.
2. Locate driver side front Mounting Bracket and driver side front Support Bracket. There are three factory holes in the outer side of the frame rail towards the front of the vehicle, one large round, one oval, and one small round. Insert (2)  $\frac{1}{2}$ " x  $1\frac{3}{4}$ " Bolt Plates through large round hole so they protrude through oval and small round hole adjacent (**Figure 1**).
3. While holding the Bolt Plates in place, position driver side front Mounting Bracket over already inserted Bolt Plates. Secure front Mounting Bracket using the included (2)  $\frac{1}{2}$ " Lock Washers, (2)  $\frac{1}{2}$ " Flat Washers, and (2)  $\frac{1}{2}$ " Hex Nuts (**Figure 2**). Do not tighten at this time.
4. Remove the factory bolt in the pinch weld located right above the front Mounting Bracket. Loosely attach straight end of the front Support Bracket on the outer side of pinch weld using the factory bolt removed in this step (**Figure 3**).
5. Attach bend end of driver side front Support Bracket to the front side of the Mounting Bracket using the included (1) 10mm x 30mm Hex Head Bolt, (1) 10mm lock Washer, (1) 10mm Hex Nut, and (2) 10mm Flat Washers (**Figure 3**). Do not tighten at this time.
6. Partially hang driver side rear Mounting Bracket to factory 12mm stud located in the floor panel towards the center of the vehicle using the included (1) 12-1.75mm Hex Nut and (1)  $\frac{1}{2}$ " Flat Washer (**Figure 4**).
7. Insert (1)  $\frac{1}{2}$ " x  $1\frac{3}{4}$ " Bolt Plate through slotted factory hole on the bottom of the frame rail so it protrude through hole on the outer side of the frame. Attach driver side rear Mounting Bracket to Bolt Plate using the included (1)  $\frac{1}{2}$ " Lock Washer, (1)  $\frac{1}{2}$ " Flat Washer, and (1)  $\frac{1}{2}$ " Hex Nut (**Figure 4**).
8. Position driver Sidebar onto Mounting Brackets. Attach Sidebar to Mounting Brackets using the included (4) 8mm x 25mm Hex Head Bolts, (4) 8mm Lock Washers, (4) 8mm Flat Washers (**Figure 3**).
9. Align Sidebar properly; and then tighten all hardware at this time.
10. Repeat steps 2 -10 for passenger Sidebar. **NOTE:** Passenger side rear Mounting Bracket mounts the same as the driver side, except the passenger side mounts on the inner side of the frame rail (**Figure 5**).
11. Do periodic inspections to the installation to make sure that all hardware is secure and tight.

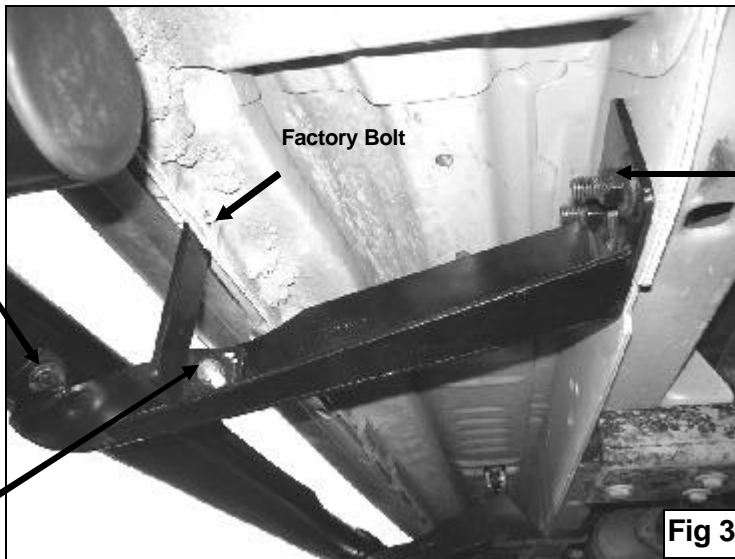
**To protect your investment**, wax this product after installing. Regular waxing is recommended to add a protective layer over the finish. Do not use any type of polish or wax that may contain abrasives that could damage the finish.

**For stainless steel:** Aluminum polish may be used to polish small scratches and scuffs on the finish. Mild soap may be used also to clean the Sidebar.

**For gloss black finishes:** Mild soap may be used to clean the Sidebar.

### (Driver Side Installation Shown)





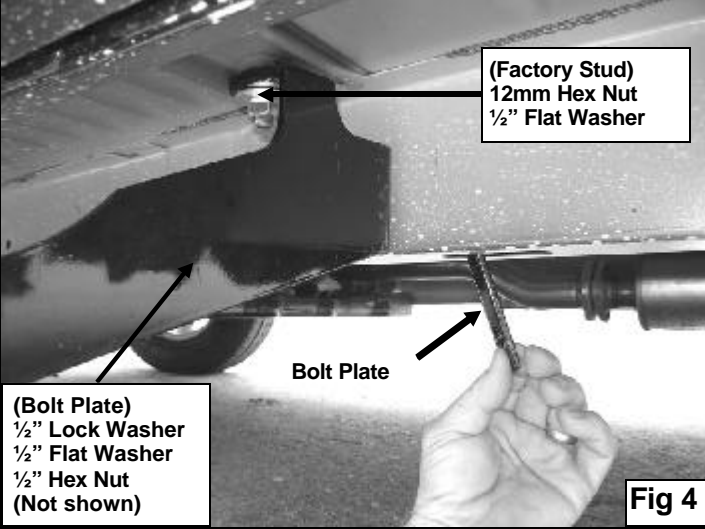
8mm x 25mm Hex Bolts  
8mm Lock Washers  
8mm Flat Washers

10mm x 30mm Hex Bolt  
10mm Lock Washer  
10mm Flat Washers  
10mm Hex Nuts

( $\frac{1}{2}$ " x 1  $\frac{3}{4}$ " Bolt Plates)  
 $\frac{1}{2}$ " Lock Washers  
 $\frac{1}{2}$ " Flat Washers  
 $\frac{1}{2}$ " Hex Nuts

**Fig 3**

**Driver Side Rear Mounting Bracket Shown**



(Factory Stud)  
12mm Hex Nut  
 $\frac{1}{2}$ " Flat Washer

(Bolt Plate)  
 $\frac{1}{2}$ " Lock Washer  
 $\frac{1}{2}$ " Flat Washer  
 $\frac{1}{2}$ " Hex Nut  
(Not shown)

**Fig 4**

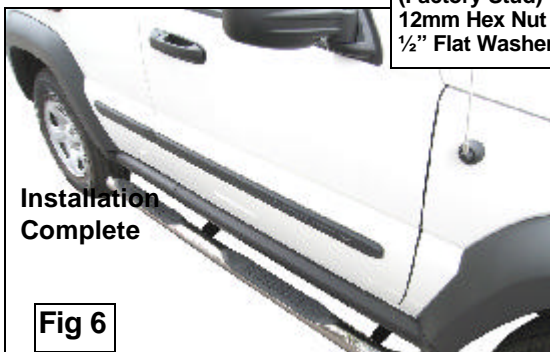
**Passenger Side Rear Mounting Bracket Shown**



(Factory Stud)  
12mm Hex Nut  
 $\frac{1}{2}$ " Flat Washer

(Bolt Plate)  
 $\frac{1}{2}$ " Lock Washer  
 $\frac{1}{2}$ " Flat Washer  
 $\frac{1}{2}$ " Hex Nut  
(Not shown)

**Fig 5**



Installation Complete

**Fig 6**