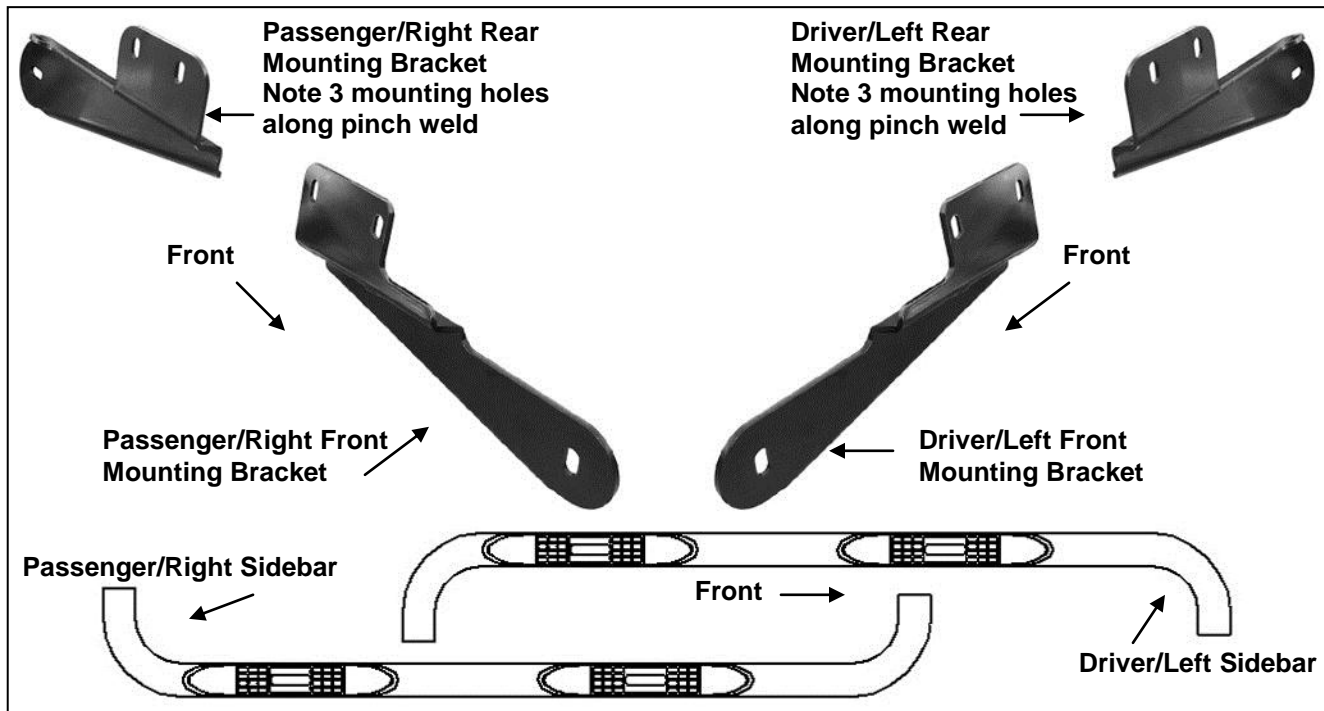


3" SIDE BAR
03-13 FORD EXPEDITION (EXCLUDES "EL")

PARTS LIST:

1	Driver Side Bar	8	8-1.25mm x 25mm Self Tapping Bolts
1	Passenger Side Bar	10	8-1.25mm x 25mm Hex Bolts
1	Driver Side Front Mounting Bracket	10	8mm Nylon Lock Nuts
1	Passenger Side Front Mounting Bracket	20	8mm x 16mm OD x 1.6mm Flat Washers
1	Driver Side Rear Mounting Bracket	4	1/2" x 2" Hex Bolts
1	Passenger Side Mounting Bracket	4	1/2" Lock Washers
		4	1/2" Flat Washers



PROCEDURE:

- 1. REMOVE CONTENTS FROM BOX. VERIFY ALL PARTS ARE PRESENT. READ INSTRUCTIONS CAREFULLY BEFORE STARTING INSTALLATION.**
- Start installation on the passenger side of the vehicle. Remove factory running boards and all hardware if equipped. **IMPORTANT:** On vehicles equipped with factory running boards, remove the threaded clip nuts from the pinch weld before continuing installation, (**Figure 1**).
- Locate the (2) holes in the bottom of the pinch weld and the (2) threaded holes in the side of the inner body panel above the oval opening, (**Figure 2**). Select the passenger side Front Bracket. Hang the Bracket from the (2) threaded holes with the included (2) 8mm x 25mm Self Tapping Bolts, (**Figure 3**). **NOTE:** The 8mm Self Tapping Bolts are designed to remove any paint or undercoating in the factory threaded holes in the body panel. Leave hardware loose at this time. Insert (2) 8mm x 25mm Hex Bolts with (2) 8mm Flat Washers up from the bottom and through the pinch weld and the Mounting Bracket. Secure the Bracket to the pinch weld with (2) 8mm Flat Washers and (2) 8mm Nylon Lock Nuts, (**Figure 3**). Leave hardware loose at this time.
- Repeat **Step 2** to install the passenger side Rear Mounting Bracket to the threaded holes in the inner body panel and the pinch weld. **NOTE:** The Rear Mounting Bracket will require (3) 8mm x 25mm Hex Bolts with (6) 8mm Flat Washers and (3) 8mm Nylon Lock Nuts to attach the Bracket to the pinch weld, (**Figures 4 & 5**). Leave hardware loose at this time.

3" SIDE BAR

03-13 FORD EXPEDITION (EXCLUDES "EL")

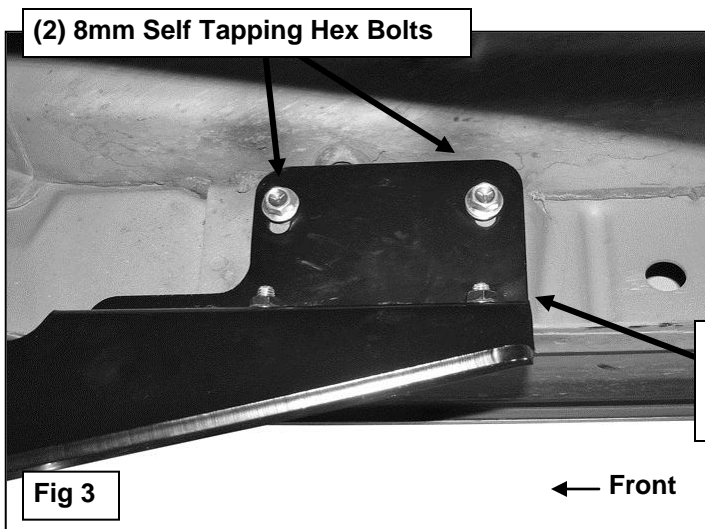
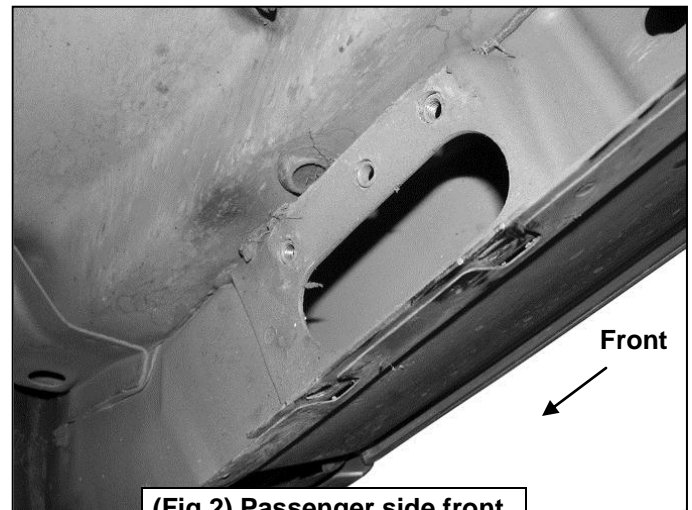
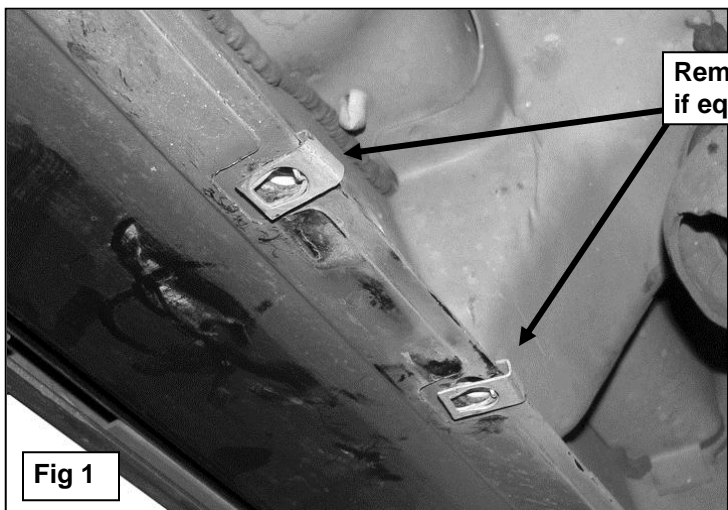
5. Select the passenger Sidebar and carefully place it up to the Brackets. Bolt the Side Bar to the Mounting Brackets with the included (2) 1/2" x 2" Hex Bolts, (2) 1/2" Lock Washers and (2) 1/2" Flat Washers (**Figures 5 & 6**). Do not tighten hardware at this time.
6. Level and adjust the Side Bar and tighten all hardware at this time.
7. Repeat Steps 2 - 6 for driver Side Bar installation.
8. Do periodic inspections to the installation to make sure that all hardware is secure and tight.

To protect your investment, wax this product after installing. Regular waxing is recommended to add a protective layer over the finish. Do not use any type of polish or wax that may contain abrasives that could damage the finish.

For stainless steel: Aluminum polish may be used to polish small scratches and scuffs on the finish. Mild soap may be used also to clean the Sidebar.

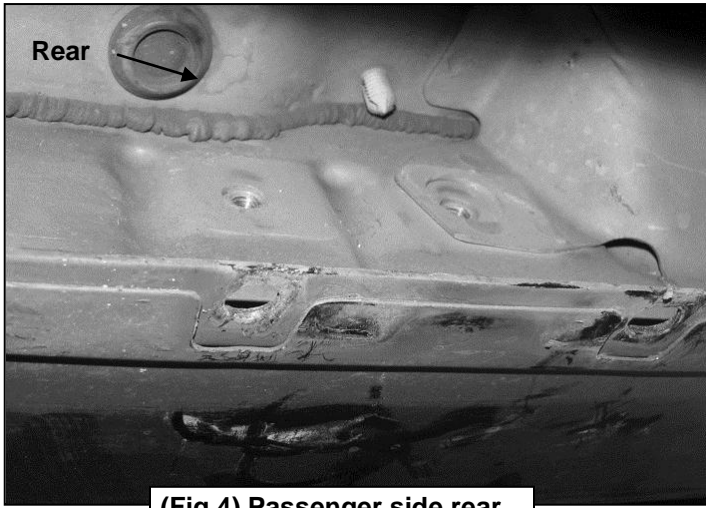
For gloss black finishes: Mild soap may be used to clean the Sidebar.

Passenger Side Installation Pictured



3" SIDE BAR
03-13 FORD EXPEDITION (EXCLUDES "EL")

Passenger Side Installation Pictured



(Fig 4) Passenger side rear mounting location pictured

- (3) 8mm x 25mm Hex Bolts**
- (6) 8mm Flat Washers**
- (3) 8mm Nylon Lock Nuts**



Fig 5

- 1/2" x 2" Hex Bolt**
- 1/2" Flat Washer**
- 1/2" Lock Washer**

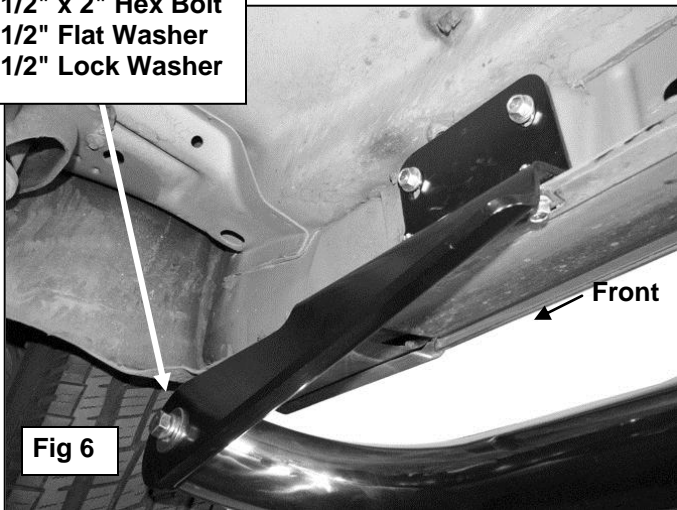


Fig 6



Complete Installation