

INSTALLATION INSTRUCTIONS

SIDE BAR

99-08 FORD F250 / F350 SUPER CAB & SUPER CREW

PART NUMBER 212450 / 212457 / 212460 / 212467

PARTS LIST:

| | | | |
|---|---------------------------------|----|---------------------------------|
| 1 | Passenger Side Bar | 6 | 10mm Clip Nuts |
| 1 | Driver Side Bar | 14 | 10-1.50mm x 40mm Hex Head Bolts |
| 4 | Mounting Brackets | 22 | 10mm Flat Washers |
| 4 | 12-1.75mm x 50mm Hex Head Bolts | 14 | 10mm Lock Washers |
| 4 | 12mm Lock Washers | 8 | 10mm Hex Nuts |
| 4 | 12mm Flat Washers | | |

PROCEDURE:

- 1. REMOVE CONTENTS FROM BOX. VERIFY ALL PARTS ARE PRESENT. READ INSTRUCTIONS CAREFULLY.**
- Locate the driver side front and rear mounting points under the vehicle on the pinch weld.
- Install the 10mm Clip Nuts (*Figure 1*). **NOTE:** The rear mount will required (2) Clip Nuts and the front only (1).
- Loosely attach the Driver Side Brackets to pinch weld using the included (2) 10-1.50mm x 40mm Hex Head Bolts, (4) 10mm Flat Washers, and (2) 10mm Lock Washers (2 & 3)).
NOTE: Pinch weld and side panel holes on the bracket must be Horizontal when installing.
- Loosely attach the upper side of the Mounting Brackets to already installed Clip Nuts by using (2) 10-1.50mm x 40mm Hex Head Bolts, (2) 10mm Flat Washers, and 10mm Lock Washers on each Mounting Bracket (*Figure 2 & 3*)..
- Place Side Bar into position and loosely attach it to Mounting Brackets using the included (2) 12-1.75mm x 50mm Hex Head Bolts, (2) 12mm Flat Washers, and (2) 12mm Lock Washers (*Figure 4 & 5*). **NOTE:** Side Bar mounting hole on the brackets must be vertical.
- Level and align Side Bar with the side of the vehicle then tighten all hardware at this time.
- Repeat steps 2 to 7 for passenger side.
- Periodically check and retighten the hardware as necessary.

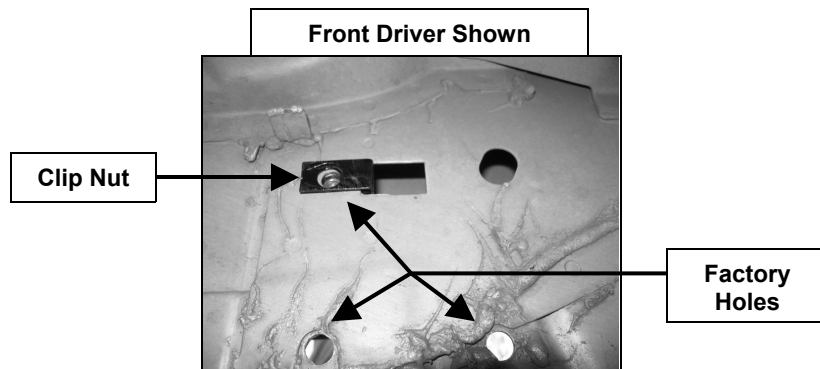


Figure 1

Front Driver Side Bracket Shown

Clip Nut, 10mm x 40mm Hex Bolt, 10mm Lock Washer, & 10mm Flat Washer

10mm x 40mm Hex Bolt, 10mm Lock Washer, 10mm Flat Washer, 10mm Nut

Disregard hole

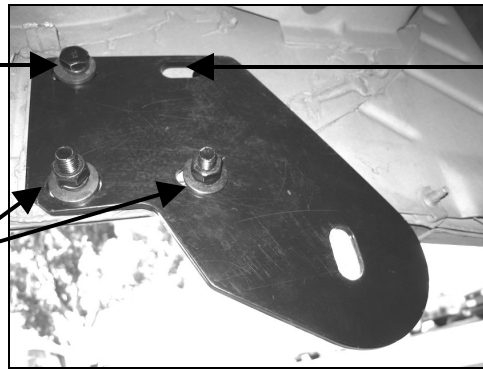


Figure 2

Rear Driver Side Bracket Shown

Clip Nut, 10mm x 40mm Hex Bolt, 10mm Lock Washer, & 10mm Flat Washer

10mm x 40mm Hex Bolt, 10mm Lock Washer, 10mm Flat Washer, 10mm Nut

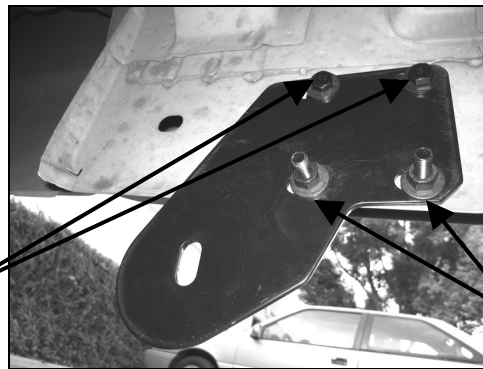


Figure 3

Rear Driver Side Bracket Shown

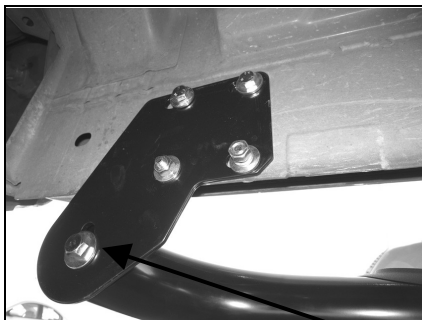


Figure 4

12mm x 50mm Hex Bolt, 12mm Lock Washer, & 12mm Flat Washer

Front Driver Side Bracket Shown

Disregard hole

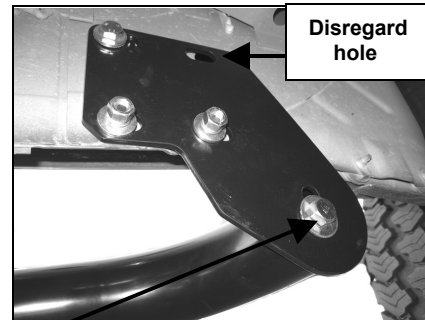


Figure 5