

INSTALLATION INSTRUCTIONS

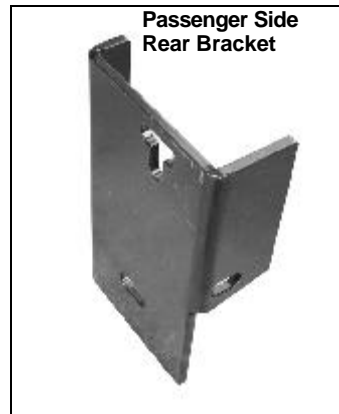
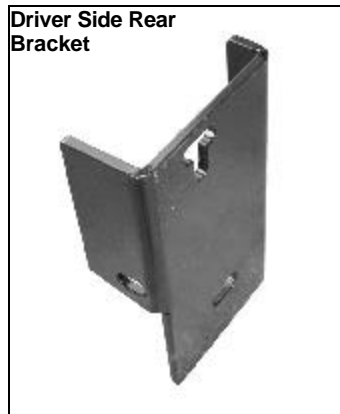
SIDEBAR

98-10 FORD RANGER REG CAB & SUPER CAB 2 DR

PART

PARTS LIST:

1	Driver/Left Sidebar	10	10-1.50mm x 30mm Hex Head Bolts
1	Passenger/Right Sidebar	10	10mm Lock Washers
1	Driver/Left Front Bracket	16	10mm ID x 21mm OD x 1.5mm Flat Washers
1	Driver/Left Rear Bracket	6	10mm Hex Nuts
1	Driver/Left Front Support Bracket	4	1/2" x 2" Hex Head Bolts
1	Passenger/Right Front Bracket	4	1/2" Lock Washers
1	Passenger/Right Rear Bracket	4	1/2" ID x 1 3/8" OD x 3/32" Flat Washers
1	Passenger/Right Front Support Bracket		
1	Driver/Left 10mm Double Nut Plate		
1	Passenger/Right 10mm Double Nut Plate		



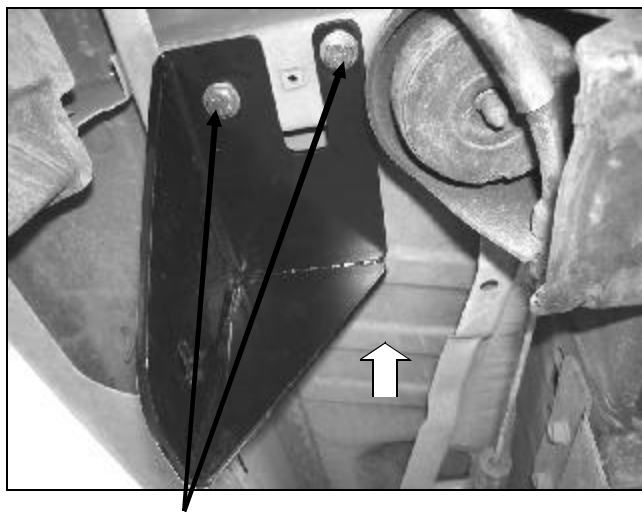
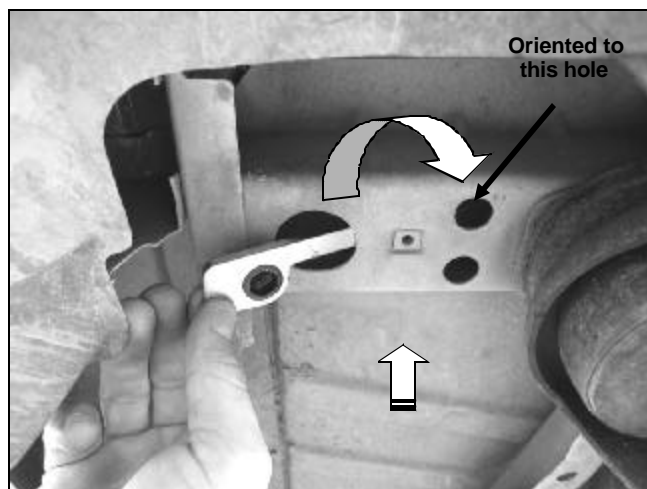
PROCEDURE:

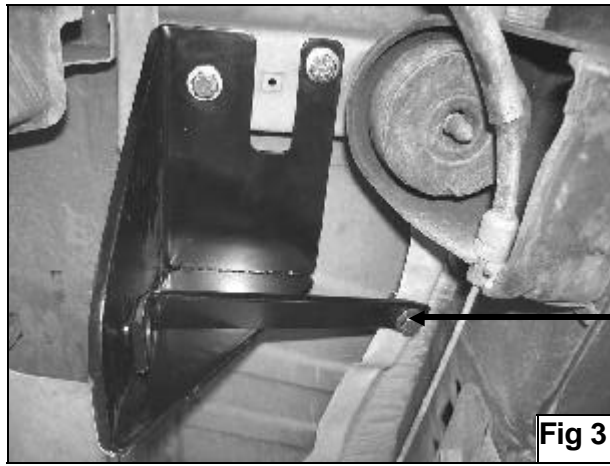
1. REMOVE CONTENTS FROM BOX. VERIFY ALL PARTS ARE PRESENT. READ INSTRUCTIONS CAREFULLY BEFORE STARTING INSTALLATION.
2. From underside of vehicle, locate the three factory holes (one large, two small) in the driver side cross frame by the front body mount. With the welded nuts facing up, insert the smaller end of the driver side Double Nut Plate through large hole in the frame and orient it to front smaller hole (**Figure 1**).
3. Partially hang driver side front Bracket from already inserted Double Nut Plate using the included (2) 10mm x 30mm Hex Head Bolts, (2) 10mm Lock Washers, and (2) 10mm Flat Washers (**Figure 2**).
4. On the rear side of the driver front body mount there is a factory hole in the floor panel located by the frame rail, loosely attach the straight end of the driver side front Support Bracket to this factory hole using the included (1) 10mm x 30mm Hex Head Bolt, (1) 10mm Lock Washer, (1) 10mm Hex Nut, and (2) 10mm Flat Washers (**Figure 3**).
5. With the larger 90° bend towards the rear of the vehicle and facing the side of the vehicle, insert the driver side rear Bracket between the side panel and body of the vehicle (**Figure 4 & 5**). Line up the hole in the 90° bend with factory hole located between the cab and the bed of the vehicle and secure it using the included (1) 10mm x 30mm Hex Head Bolt, (1) 10mm Lock Washer, (1) 10mm Hex Nut, and (2) 10mm Flat Washers. Attach upper mounting location in the Rear Bracket to factory hole in the side panel using the included (1) 10mm x 30mm Hex Head Bolt, (1) 10mm Lock Washer, (1) 10mm Hex Nut, and (2) 10mm Flat Washers (**Figure 4 & 5**). **NOTE:** On some models drilling on the side panel is required. **IMPORTANT:** Any cutting or drilling tool may break or shatter. Government regulations require safety glasses & equipment at all times when cutting or drilling.
6. Attach driver Sidebar to front Support Bracket and front Bracket using the included (1) ½" x 2" Hex Head Bolt, (1) ½" Lock Washer, and (1) ½" Flat Washer (**Figure 6**). Do not tighten at this time. **NOTE:** Front mounting leg is ¾" longer than rear mounting leg.
7. Once the front end of the Sidebar is loosely installed proceed to attach the rear end of the Sidebar to rear Mounting Bracket using the included (1) ½" x 2" Hex Head Bolt, (1) ½" Lock Washer, and (1) ½" Flat Washer (**Figure 7**). **NOTE:** Front mounting leg is ¾" longer than rear mounting leg.
8. Level and adjust Sidebar; then tighten all hardware at this time.
9. Repeat steps 2-8 for passenger Sidebar.
10. Do periodic inspections to the installation to make sure that all hardware is secure and tight.

To protect your investment, wax this product after installing. Regular waxing is recommended to add a protective layer over the finish. Do not use any type of polish or wax that may contain abrasives that could damage the finish. **For stainless steel:** Aluminum polish may be used to polish small scratches and scuffs on the finish. Mild soap may be used also to clean the Sidebar.

For gloss black finishes: Mild soap may be used to clean the Sidebar.

(Passenger Sidebar Installation Shown)





10mm x 30mm Hex Bolt
 10mm Lock Washer
 10mm Hex Nut
 10mm Flat Washers

Fig 3

(Passenger Side Rear Bracket Inside View Shown)

(Passenger Side Rear Bracket Outside View Shown)

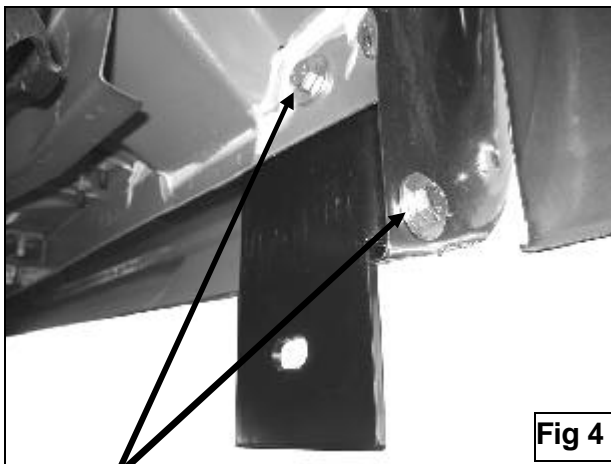


Fig 4

10mm x 30mm Hex Bolts
 10mm Lock Washers
 10mm Hex Nuts
 10mm Flat Washers

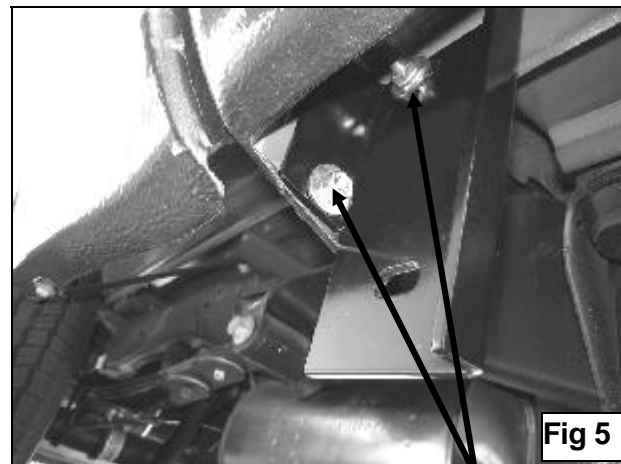


Fig 5

10mm x 30mm Hex Bolts
 10mm Lock Washers
 10mm Hex Nuts
 10mm Flat Washers

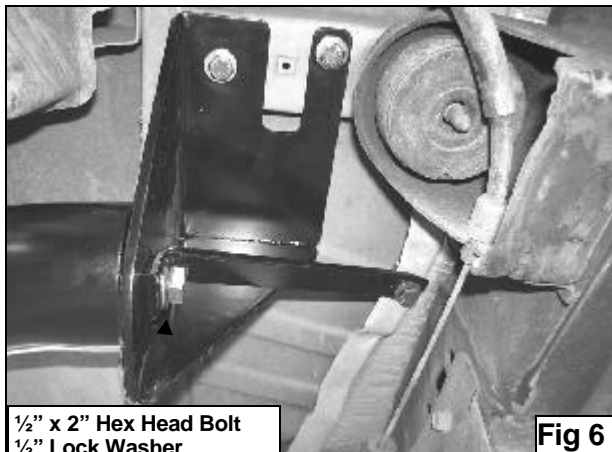
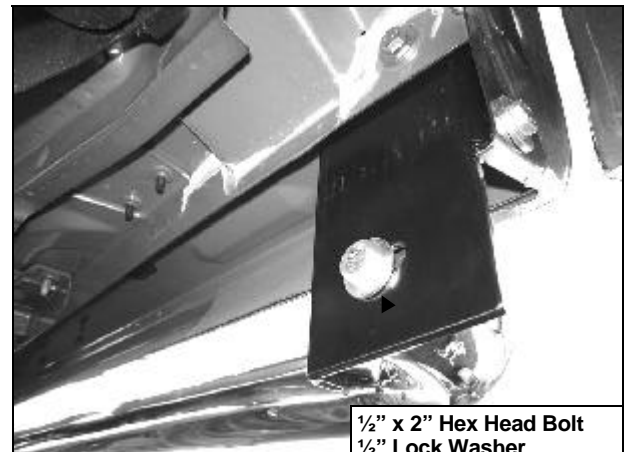


Fig 6

1/2" x 2" Hex Head Bolt
 1/2" Lock Washer



1/2" x 2" Hex Head Bolt
 1/2" Lock Washer