



## INSTALLATION INSTRUCTION

BULL BAR # 72140

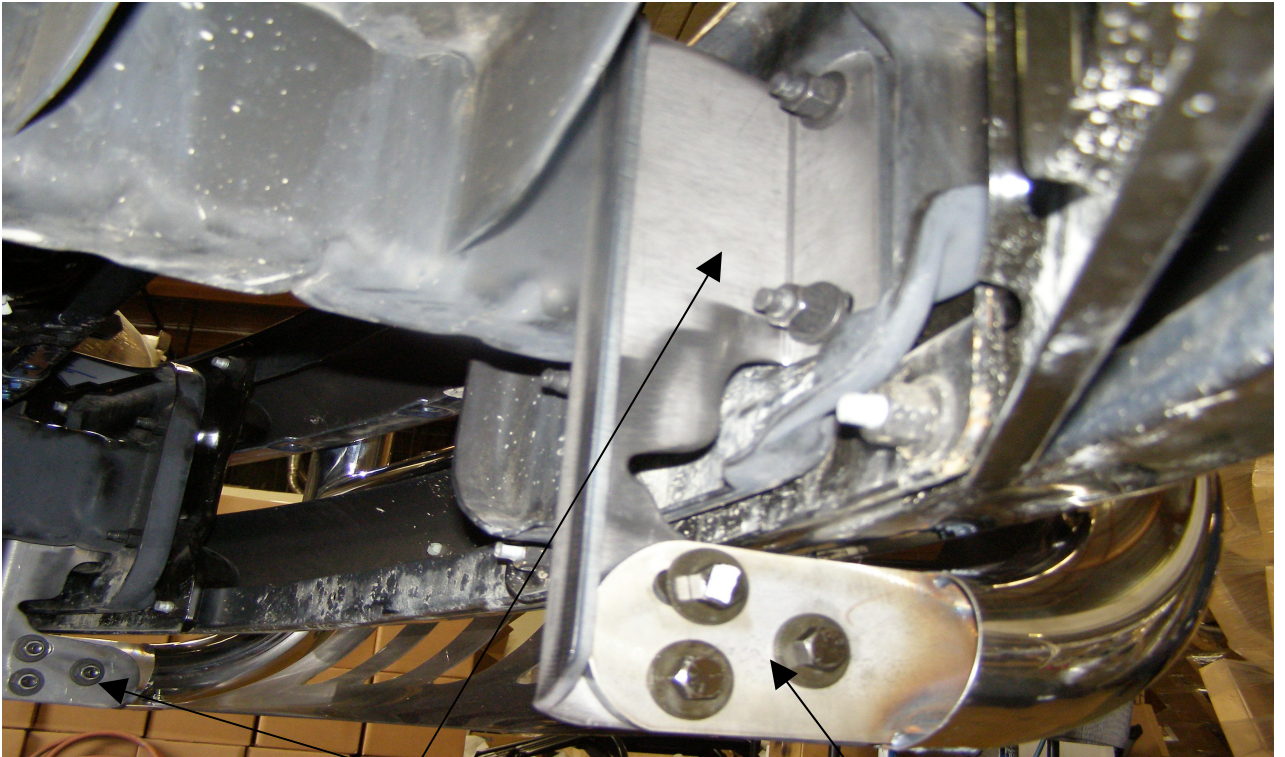
2006 DODGE RAM 1500

### PARTS LIST:

- 1 – BULL BAR
- 2 – BRACKETS DRIVER/PASSENGER SIDE
- 6 – 7/16 X 1 1/4 HEX HEAD BOLTS
- 6 – 7/16 HEX HEAD NUTS
- 12 – 7/16 FLAT WASHERS

### PROCEDURE:

- 1 – REMOVE CONTENT'S FROM BOX AND CHECK FOR DAMAGE. VERIFY ALL PARTS ARE PRESENT. READ INSTRUCTIONS CAREFULLY.
- 2 – REMOVE LOWER URETHANE VALANCE LOCATED UNDERNEATH FRONT BUMPER TEMPORARILY AND SET ASIDE
- 3 – UNBOLT (2) EXISTING NUTS LOCATED ON OUTER SIDE OF FRAME RAIL (PASSENGER SIDE SHOWN) INSTALL LOWER BRACKET ONTO FRAME RAIL BOLTS \*LEAVE LOOSE\* (SEE FIG # 1)
- 4 – REPEAT PROCEDURE #3 ON OPPOSITE SIDE
- 5- INSTALL BULL BAR USING 6 – 7/16 X 1 1/4 HEX HEAD BOLTS, 6 – 7/16 HEX HEAD NUTS,  
12 – 7/16 FLAT WASHERS \*LEAVE LOOSE\* (SEE FIG # 1)
- 6 – LEVEL AND ADJUST BULL BAR AS DESIRED. TIGHTEN & TORQUE BOLTS
- 7 – MEASURE AND TRIM LOWER URETHANE VALANCE AS DESIRED AND REINSTALL VALANCE & FRONT BUMPER (Re-install \*optional\*)



Passenger Side Shown

\*7/16 Hardware\*