

S P E E D M A T T E R S

2015-2017
MUSTANG
S550 PERFORMANCE & STYLING CATALOG



Building American Made Performance Parts For an American Icon.



STEEDDA
AUTOSPORTS®

WWW.STEEDDA.COM



STEEDA EQUIPPED DRAG CAR
8.71 @ 164 MPH WITH 1.35 60 FT



STEEDA EQUIPPED MUSTANG TIRE TESTING @ PBIR

2015-2017 STEEDA SUSPENSION

Steeda Front and Rear Sway Bar Kit

555-1017 (All)

- Improved handling
- More stable cornering
- Reduces body roll
- Sway bar adjustability



Steeda Front Sway Bar

555-1015

- Improved handling
- More stable cornering
- Reduces body roll
- Sway bar adjustability



Steeda Rear Sway Bar

555-1016

- Improved handling
- More stable cornering
- Reduces body roll
- Sway bar adjustability



Steeda Drag Race Rear Sway Bar

555-1018 (All)

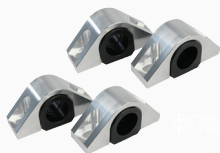
- Improves stability during launch
- Reduces body roll
- 1 1/8" solid sway bar
- Installed on the fastest S550



Steeda Front & Rear Sway Bar Mount Kit

555-8149 (All)

- No flex while cornering
- Assures optimal handling
- High-quality billet
- Lifetime warranty



Adjustable Stay-Bar Endlinks

Steeda's adjustable stay-bar endlinks make a great upgrade for the stock endlinks as well as the perfect dual purpose street/open track piece.

555-1042 Front and Rear Endlink Kit

555-1041 Adjustable Rear Endlink

555-1040 Adjustable Front Endlink



Steeda Billet Aluminum Vertical Links

555-4121 (All)

- Increased handling characteristics
- Will not flex under load
- No increase in NVH
- High-quality billet
- Reduces wheel hop



Steeda IRS Subframe Bushing Support System

555-4437 (All)

- Increase traction
- Reduces wheel hop - No increase in NVH
- Reduce rear subframe movement



Steeda Sport Springs - Linear

555-8208 (GT/V6), 555-8209 (EcoBoost)

- 1" drop all around
- Great ride quality
- Sharpen steering response
- Improved handling



Steeda Sport Springs - Progressive

555-8210 (GT/V6), 555-8212 (EcoBoost)

- 1.125" front drop 1" rear drop
- Great ride quality
- Sharpen steering response
- Increased spring rate as roll increases



Steeda Ultralite Springs - Linear

555-8211 (GT/V6), 555-8213 (EcoBoost)

- 1.125" front drop 1" rear drop
- Great ride quality
- Sharpen steering response
- 10% lighter than OE springs



Steeda Ultralite Extreme Springs - Linear

555-8214 (GT/V6)

- 2" drop in front and rear
- Improved aerodynamics & stance
- 30% lighter than competitor springs



Steeda Adjustable Bumpstop Kit

555-4445

- Direct replacement of stock components
- Prevents damage and fatigue to the shocks
- Adaptable for various vehicle ride heights



Steeda IRS Subframe Alignment Kit

555-4438 (All)

- Aligns subframe to chassis
- No increase in NVH
- Easy install
- No permanent modification



Steeda S550 Mustang Billet Rear Spring Spacer ('15-'17 All)

555-8251 1/4"

555-8250 3/8"

- Raise the rear of your car
- Lifetime warranty
- Made in the USA
- Sold in pairs of thicknesses of 1/4" and 3/8"



Steeda Differential Bushings - Urethane Kit

555-4439 (15-17 GT)

- Limits IRS differential movement
- Increases traction, eliminates wheel hop
- Little to no increase in NVH
- Easily removable, not permanent mod
- 2 Adjustable bushing options



Steeda Differential Bushings - Urethane Kit

555-4443 (15-17 EcoBoost)

- Limits IRS differential movement
- Increases traction, eliminates wheel hop
- Little to no increase in NVH
- Easily removable, not permanent mod
- 2 Adjustable bushing options



Steeda Differential Bushings - Aluminum

555-4440 (All)

- Eliminates IRS differential movement
- Aggressive wheel hop solution
- No permanent modification
- Less than 1 hour install time



Steeda Differential Bushings Combo Kit

555-4442 (All)

- Limits IRS differential movement
- Reduces wheel hop
- No permanent modification
- 3 Adjustable bushing options



S550 Differential Bushing 12.9 Hardware Upgrade Kit

555-4448

- Stronger than OEM Hardware
- Zinc plated for a long lasting finish
- Strongest bolts you can buy



Steeda S550 Mustang IRS Subframe Alignment Kit ('15-'17 All)

555-4447

- Easy to install
- No permanent modifications
- Correctly align the rear end
- Aligns rear ends with BMR CB005 Kit
- No increase in NVH
- Made in the USA



Steeda IRS Subframe Support Braces

555-5754 (Coupe)

- Increased handling characteristics
- Limits IRS subframe movement
- No increase in NVH
- Reduces wheel hop



Steeda Rear Spherical Bearings

555-4117 (All)

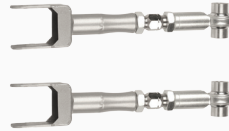
- Decreases vehicle reaction times
- Reduces rear lower control arm deflection and wheel hop
- Eliminates alignment changes under **power**
- No NVH increase



Steeda Adjustable Rear Toe Links

555-4120 (All)

- On-car adjustability with no increase in NVH
- Great for aggressive driving
- Comes with eccentric block-out plates



Steeda S550 Mustang Front Adjustable Camber Bolts ('15-'17 All)

555-4124

- Better traction - Less tire wear
- Adjustable Camber
- Made in the USA
- Fits the front struts of the S550 2015+ Mustang.



Steeda Rear Adjustable Camber Arms

555-4123 (All)

- Increased cornering performance
- More predictable handling
- Gain rear grip with no increase in NVH
- Increase vehicle reaction time



Steeda Rear Camber Adjustment Kit

555-4126

- Bolt-on design/No Permanent modifications necessary
- Utilizes the full 2.0 degrees of adjustment from the factory
- Works with stock camber arm, Steeda adjustable camber and aftermarket non-adjustable camber arms
- Patent Pending



Steeda Bumpsteer Kit

555-8133 (All)

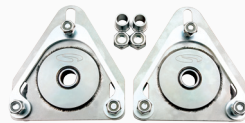
- Correct your bumpsteer geometry
- Wide -range of adjustment
- No spindle modification
- Direct replacement
- Billet Aluminum and 4140 CM Steel construction



Steeda Camber Plates

555-8139 (All)

- Adjust camber angle from -0.3° to -2.8°
- Reduces uneven tire wear for lowered cars
- Increases cornering capability by .11 G's



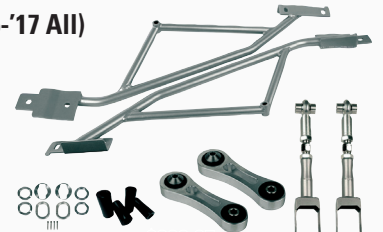
Steeda Mustang Ultimate IRS 'Stop the Hop' Package ('15-'17 All)

555-2129

PACKAGE INCLUDES

- IRS Subframe Bushing Support System
- IRS Subframe Alignment Kit
- Billet Aluminum Vertical Links
- IRS Subframe Support Braces
- Adjustable Rear Toe Links

- Improves vehicle handling
- On-car toe adjustability
- Improves suspension compliance
- Increases traction
- Aligns subframe to chassis
- Limits IRS sub frame movement
- Reduces wheel hop
- No added NVH



Steeda Adjustable Front & Rear Shocks Kit

555-8157 (Specifically designed for lowered S550 Mustangs)

- Steeda proprietary shock valving
- Reduce wheel hop, squat, body roll & body oscillation
- Less damper friction, less sideloading on the shafts, lower internal pressures



Steeda Adjustable Front Shocks

555-8155

- Steeda proprietary shock valving
- Reduce wheel hop, squat, body roll & body oscillation
- Less damper friction, less sideloading on the shafts, lower internal pressures



Steeda Adjustable Rear Shocks

555-8156

- Steeda proprietary shock valving
- Reduce wheel hop, squat, body roll & body oscillation
- Less damper friction, less sideloading on the shafts, lower internal pressures



Steeda Pro Action Kit (non adjustable)

555-8150 (All)

- Better handling with exceptional ride quality
- Properly valved for the Mustang
- Great for street and track action!
- Perfect for daily street driving or open track use



Steeda Pro Action Front Shocks (non adjustable)

555-8158

- Better handling with exceptional ride quality
- Properly valved for the Mustang
- Great for street and track action!
- Perfect for daily street driving or open track use



Steeda Pro Action Rear Shocks (non adjustable)

555-8159

- Better handling with exceptional ride quality
- Properly valved for the Mustang
- Great for street and track action!
- Perfect for daily street driving or open track use



Steeda Billet Rear Shock Mount 12mm

555-8152

- For 12mm aftermarket shocks like Steeda's Pro-Action
- Made from billet 6061 aluminum
- Better rear shock control
- Stronger than the OEM bracket



Rear Shock Mount 10mm

555-8151

Rear Shock Mount Coilover

555-8161

- For factory & Ford Racing shocks that are 10mm in diameter
- Made from billet 6061 aluminum
- Better rear shock control
- Greatly help control with uncompromised durability



Steeda 12mm Shock Mount Spacer Kit

555-8153 (For Steeda 12mm Billet Rear Shock Mounts)

- For upgrading the 10mm Billet Rear Shock Mount kit for their OEM or Ford Racing struts to aftermarket 12mm units
- Includes spacers & custom machined nuts needed to convert



2015-2017 STEEDA ENGINE

Steeda ProFlow Cold Air Intake - No Tune

555-3193 – 15-17 GT

- 22 rwHP and 18 ft/lb tq without a tune
- 30 rwHP and 23 ft/lb tq with a tune
- Power increase at all RPM ranges



Steeda ProFlow Cold Air Intake - Tune Required

555-3194 – 15-17 GT

- 22 rwHP and 18 ft/lb tq without a tune
- 30 rwHP and 23 ft/lb tq with a tune
- Power increase at all RPM ranges



Steeda ProFlow Ultimate Induction Power Pack

555-3202 – 15-17 GT

- 30 rwHP and 23 ft/lb tq - GT
- 48 rwHP and 78 ft/lb tq - GT
- Includes Steeda Tunes for Life



Steeda ProFlow Cold Air Intake ('15-'17 EcoBoost)

555-3199 (EcoBoost)

- 27 rwHP and 10 ft/lb tq without a tune
- 48 rwHP and 78 ft/lb tq with a tune
- Uses speed density, no tuning is required



Carb # D-536-5

Steeda ProFlow Ultimate Induction Power Pack

555-3205 (EcoBoost)

- 30 rwHP and 23 ft/lb tq - GT
- 48 rwHP and 78 ft/lb tq - EcoBoost
- Includes Steeda Tunes for Life



Steeda wwProFlow Cold Air Intake Restrictor, No tune required ('15-'17 GT)

555-3204

- Allows you to maintain your factory tune
- Added horsepower and torque without a tune
- Lifetime warranty



Steeda ProFlow Cold Air Intake - V6

555-3206 (V6)

- 8 rwHP and 10 ft/lb tq without a tune
- Power increase at all RPM ranges
- Uses speed density, no tune is required



Steeda Sound Tube Delete Kit

555-3210

- For use with OEM induction system
- Comes with rubber cap for the intake tube and a plug for the firewall making for a clean removal of factory sound tube
- Cleaner engine bay



Steeda Billet Idler Pulleys

555-3366 (GT)

- Made from Aerospace grade aluminum
- Stronger than OEM pulleys
- Double sealed for a long, trouble-free life



Steeda Blk Billet Oil Separator

555-3716 (GT)

- Increases longevity of the 5.0L V8
- Prevents oil & crankcase vapors from entering intake manifold
- Plain black, no logo



Steeda Throttle Body Spacer

555-3195 (EcoBoost)

- Increases horsepower & torque
- Increases fuel economy
- High-quality billet aluminum



Steeda Water Pump Pulley

555-3367 13-17

- Light weight design using aerospace grade 6061 aluminum
- Simple to install
- 100% Made in the USA



Steeda EcoBoost Motor Mounts

555-4038 (EcoBoost)

- Allows for a 3/4" adjustment range
- Adjustable in 1/4" increments
- Includes 2 durometer



Steeda GT Motor Mounts

555-4039 (GT)

- Allows for a 3/4" adjustment range
- Adjustable in 1/4" increments
- Includes 2 durometer



2015-2017 STEEDA DRESS UP

Steeda Hood Strut Kit

555-0687 (All)

- Big support brackets prevent hood flex
- Neoprene backing to avoid abrasion
- More room to work on your engine



Steeda Functional Wings

476-STEEDA-WING-15 (Race)

- Proven functionality with minimal drag
- Aggressive styling, make a statement
- Paint-ready, easy install



Steeda Functional Wings

307-0015K (Street)

- Proven functionality with minimal drag
- Aggressive styling, make a statement
- Paint-ready, easy install



Steeda Front Splitter - Street

283-S550-GT-PP (GT)

- Aerodynamic, improves front downforce
- Steeda aesthetics, aggressive styling
- Pre-drilled holes, easy install



Steeda Front Fascia

028-S550-FASCIA: P (Painted), U (Unpainted)

- As seen on Steeda's Q750 SEMA build
- Perfect OE color match options
- Aggressive yet tasteful styling



Steeda Reverse Lock-Out Collar

555-7080

- Replaces flimsy plastic factory part
- Avoid losing reverse capabilities due to broken factory lock-out collar
- Aluminum finish



Steeda Reverse Lock-Out Collar

555-7081

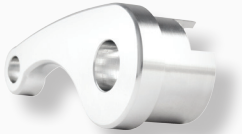
- Replaces flimsy plastic factory part
- Avoid losing reverse capabilities due to broken factory lock-out collar
- Stealthy black Delrin finish for strength



Steeda Interior Hood Latch

555-1248 (Plain Billet)

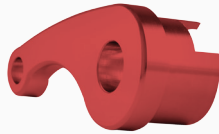
- Replaces plastic OE interior hood latch
- Anodized red and black billet aluminum
- Curved design for better grip



Steeda Interior Hood Latch

555-1248-RED (Red)

- Replaces plastic OE interior hood latch
- Anodized red and black billet aluminum
- Curved design for better grip



Steeda Interior Hood Latch

555-1248-BL (Black)

- Replaces plastic OE interior hood latch
- Anodized red and black billet aluminum
- Curved design for better grip



Steeda Illuminated Door Sills

067-1511-7030-01 (All)

- Works with Ford's MyColor® system
- Illuminates with "Steeda" logo
- Works on Mustangs with or without factory illuminated door sills



Steeda Heel/Toe Pedal Kit

555-1272 (All)

- For competition-use
- Fits on factory pedal
- Easy to install



Steeda Pedal Kit - Manual

555-1270 (All)

- Fits on factory pedal
- High-quality billet
- Easy to install



Steeda Pedal Kit - Automatic

555-1271 (All)

- Fits on factory pedal
- High-quality billet
- Easy to install



Steeda Heel/Toe Gas Pedal

555-1273 (All)

- For competition-use
- Fits on factory pedal
- Easy to install



2015-2017 STEEDA DRIVETRAIN

Steeda Drive Shaft Loop

555-5070 (All)

- Safety precaution: contains driveshaft in case of u-joint failure
- Direct bolt-on installation, lightweight
- NHRA legal construction
- 1/4" thick stamped steel for strength



Steeda Braided Clutch Line

555-7016 (GT/ EcoBoost)

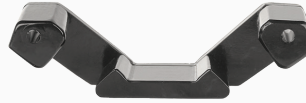
- Improves clutch feel
- Reduces clutch pedal sticking
- Stainless line, CNC machined fittings



Steeda Trans Mount Bushing

555-4037 (All)

- Improves shifting performance
- No permanent modification
- Easy install



Steeda Shifter Base Bracket

555-7092 (All)

- Improves shifting performance
- Aerospace-grade aluminum
- Easy install



Steeda Tri-Ax Street Shifter

555-7316 (All)

- 30% throw reduction
- Shift knob sits lower
- Completely replace OE reverse lockout
- Reduces NVH from stock shifter rattle



Steeda Tri-Ax Race Shifter

555-7317 (GT), 555-7318 (EcoBoost)

- 30% throw reduction
- Adjustable springs
- 20% lighter than others
- Lifetime warranty
- Eliminates slop & shifter deflection



Steeda Shift Knob

203-S550-BLACK (All), 203-S550-WHITE (All)

- Works with most aftermarket shifters
- Uses factory M12 x 1.25 pitch
- Adds Steeda flair to your interior



Steeda Clutch Spring 35 lb/in

555-7022 (All)

- More linear clutch feel
- Piano wire with high tensile strength
- Avoid slave cylinder damage



Steeda Spring Perch Assembly

555-7024

- Stronger than factory
- Lifetime warranty
- Simple install
- 100% Made in the USA



Spring Perch and Clutch Spring Upgrade Kit

555-7027

- Improve clutch pedal engagement feel
- Consistent spring rate and minimal sag even after repeated use
- More linear clutch feel
- Heavy Duty design that's



2015-2017 STEEDA CHASSIS

Steeda Ultra Lite Jacking Rails

555-5205 (Coupe Only)

- 40% lighter than competition, only 14 lbs
- Jack up an entire car side w/ease
- Prevents damage to OE pinch welds
- Does not fit convertibles



Steeda Ultra Lite Jacking Rails

555-5207 (Convertible Only)

- 60% lighter than competition, only 12 lbs
- Includes all mounting hardware
- Works w/IRS Subframe Support Braces
- Jack anywhere along rail, preventing damage to factory pinch welds



Steeda Strut Tower Brace

555-5731 (GT/EcoBoost All - Does not fit V6)

- Increases front chassis stiffness
- Improves ride quality over rough surfaces
- Improves vehicle handling characteristics
- Fits all RH drive models that are not V6



Steeda Extreme G-Trac Brace

555-5532 (Fits All - except GT350)

- 15% lighter than the competition
- Stiffens front subframe
- Improves suspension compliance
- Also referred to as K-Member brace
- Clears long tube - headers
- Bolt-on installation



Steeda 2-Point G-Trac Brace

555-5533 (GT350)

- Improves chassis stiffness
- Only 5.5 lbs, over 50% lighter than competition
- Compatible w/other aftermarket components (headers, etc.)
- Improves vehicle response & predictability
- Installs in minutes



Steeda Mustang Shelby GT350 Strut Tower Brace ('15-'17 GT350)

555-5733

- Stiffens up the front of your GT350
- No permanent modifications
- Light weight design
- Made in the USA





2015-2017 STEEDA WHEELS



Steeda ST-R Gunmetal

Steeda's ST-R wheels offer mesh styling and low-pressure cast construction, square and staggered fitments available.

004-209502 (20 x 9.5)

004-211502 (20 x 11)



Steeda ST-R Black

Steeda's ST-R wheels offer mesh styling and low-pressure cast construction, square and staggered fitments available.

004-209501 (20 x 9.5)

004-211501 (20 x 11)



Steeda Spyder Black

Steeda's Spyder wheels feature a split 5-spoke design with machined lip, square and staggered fitments available.

013-0021-45B-15 (20 x 9.5)

013-0021-59B-15 (20 x 11)



Velgen Wheels VMB9 Satin Black - 20x10.5 ('05-'17)

- Aggressive staggered muscle car look
- Affordable custom look
- Provides clearance for big brake kits
- Velgen Wheels quality

SILVER – 884-VMB8-20105-SLVR (20 x 10.5)

GUNMETAL – 884-VMB8-209 (20 x 9.5)

BLACK – 884-VMB7-20-105-9-B (20 x 10.5)

BRONZE – 884-VMB5-19105-B (19 X 10.5)

2015-2017 STEEDA EXHAUST

Steeda GT Axle-Back Exhaust

159-0001 (GT)

- Lighter than OE exhaust, easy install
- Adds aggressive muscle car tone
- Ideal for daily driving, no drone mufflers



Steeda GT H-Pipe

053-S550-GT-HPIPE (GT)

- Increases exhaust flow, aggressive tone
- Deletes restrictive stock resonator
- Simple clamp-on design, easy install



2015-2017 STEEDA BRAKES

Steeda Slotted Brake Rotor Kit

555-6026 (Kit), 555-6024 (Front), 555-6025 (Rear)

- Minimizes surface cracking
- Reduces rotor fatigue
- Front and rear rotors, combo value kit



Steeda Braided Brake Lines

555-6027 (GT)

- Increases stopping power
- Corrosion-resistant, stainless lines
- No volumetric expansion

