

GF10539 ALT. B

FOR EFFECTIVE REPAIR, USE ALL PARTS IN KIT REGARDLESS OF ORIGINAL CONDITION

Steering Wheel Speed Sensor Replacement 1997-1998 C/K Truck Read service manual instructions carefully before proceeding

Disassembly

Set the front wheels in the straight ahead position and the steering wheel in the LOCKED position.

1. Disconnect the negative battery cable.
2. Disable the SIR (Supplemental Inflatable Restraint) system (refer to service manual for proper procedure).
3. Remove the nut and bolt from upper to lower steering shaft connection. Slide lower shaft down.
4. Remove sensor connector by using suitable tool to pull connector down around the right side of steering column for accessibility.
5. Remove sensor and bearing assembly from steering column jacket by pulling straight out. Use care not to apply force to sensor and bearing assembly in a sideways direction.
6. Remove sensor from clips in bearing assembly.

Assembly

1. Install sensor into bearing assembly.
2. Place the bearing into steering column jacket. Align notches on bearing and column jacket and seat bearing fully into jacket. Use care not to apply force to sensor in a sideways direction.
3. Position sensor connector.
4. Install the bolt and nut to upper end of shaft.
5. Tighten nut to 62 Nom (46 lb. ft).
6. Connect the negative battery cable.
7. Enable the SIR system (refer to service manual for proper procedure).

Removing Bearing Assembly and Sensor from Steering Column FOR EFFECTIVE REPAIR, USE ALL PARTS IN KIT REGARDLESS OF ORIGINAL CONDITION

Steering Wheel Speed Sensor Replacement 1997-1998 G, M/L Van Read service manual instructions carefully before proceeding

Disassembly

1. Disable the SIR system (refer to service manual for proper procedure).
2. Remove steering column from vehicle for access to sensor assembly (refer to service manual for proper procedure).
3. Secure steering column into vise.
4. Position sensor and bearing assembly from steering column jacket by pulling straight out. Use care not to apply force to sensor and bearing assembly in a sideways direction.
5. Position sensor from clips in bearing assembly.

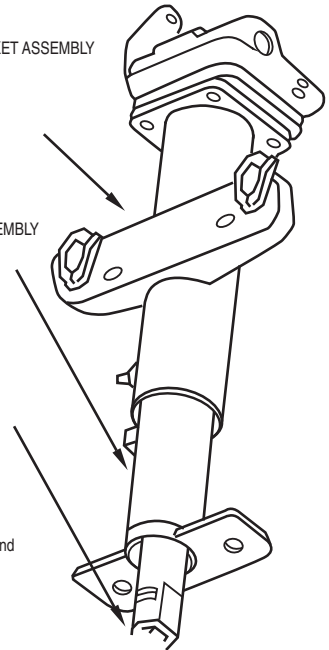
Assembly

1. Position sensor into bearing assembly.
2. Place the bearing into steering column jacket. Align notches on bearing and column jacket and seat bearing fully into jacket. Use care not to apply force to sensor in a sideways direction.
3. Install steering column into vehicle (refer to service manual for proper procedure).
4. Enable the SIR system (refer to service manual for proper procedure).

STEERING COLUMN JACKET ASSEMBLY

ADAPTER AND BEARING ASSEMBLY

Removing Bearing Assembly and
Sensor from Steering Column



[View other replacement steering parts made by Standard on our website.](#)