

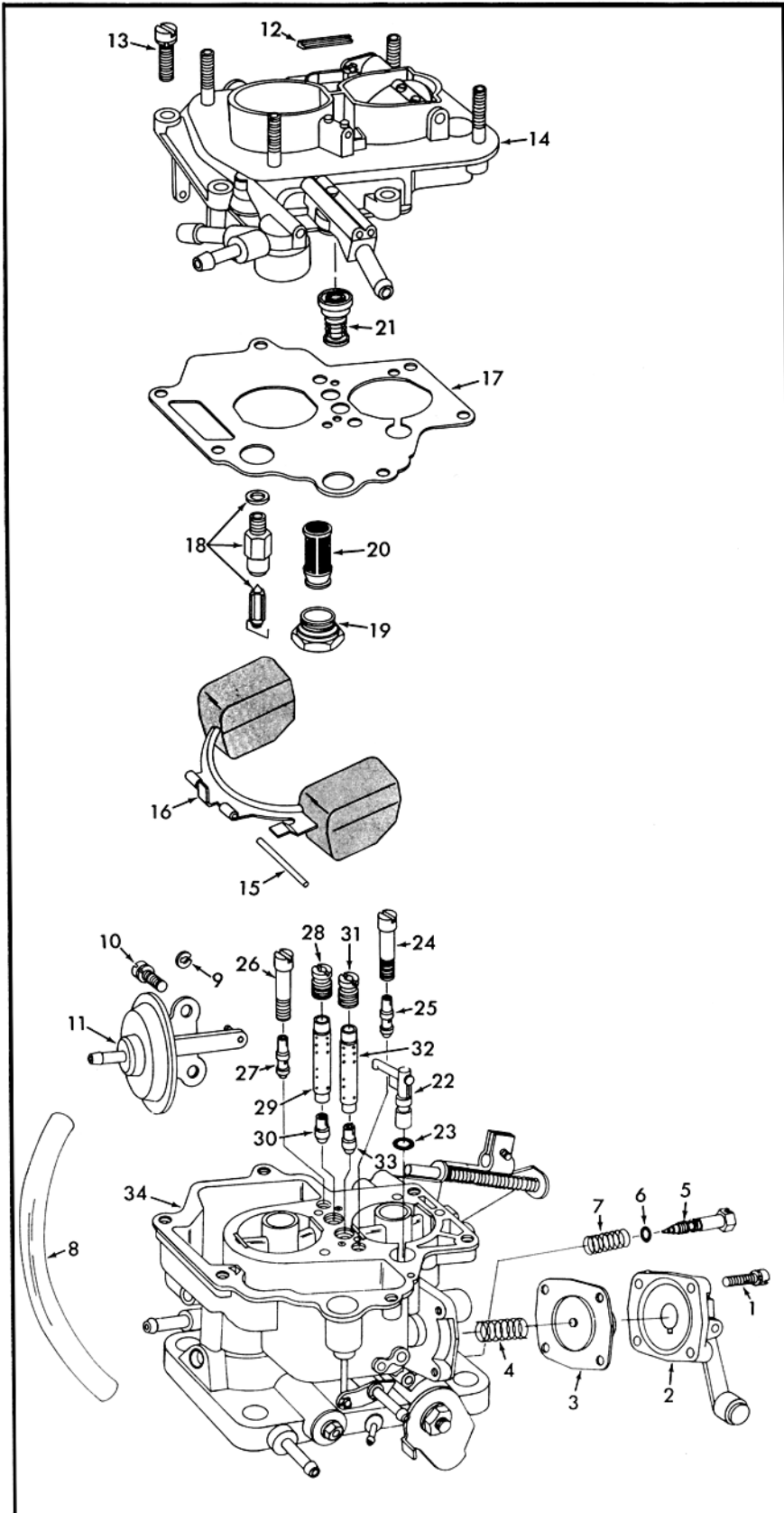
INSTRUCTION SHEET

WEBER CARBURETOR — MODEL 32 DMTRA

08050-532

GENERAL EXPLODED VIEW

THE GENERAL DESIGN AND PARTS SHOWN WILL VARY TO
INDIVIDUAL UNITS COVERED ON THIS INSTRUCTION SHEET



DISASSEMBLY

USE EXPLODED VIEW AS A GUIDE. THE NUMERICAL SEQUENCE MAY GENERALLY BE FOLLOWED TO DISASSEMBLE UNIT FAR ENOUGH TO PERMIT CLEANING AND INSPECTION. NOTE SIZES OF JETS AND MAIN WELL TUBES AND THEIR LOCATION FOR PROPER ASSEMBLY. (RECORD SIZES BELOW). VENT VALVE ASSY. (21) HAS A RUBBER VALVE AND MUST BE REMOVED BEFORE CLEANING. VALVE RETAINER IS A PRESS FIT IN BOWL COVER.

NOMENCLATURE

REF. NO.	REF. NO.
1. SCREW & LOCKWASHER (4)- PUMP COVER	19. PLUG- FUEL FILTER
2. PUMP COVER ASSY.	20. FILTER- FUEL
3. DIAPHRAGM ASSY.- PUMP	21. VENT VALVE ASSY.
4. SPRING- PUMP DIAPHRAGM	22. NOZZLE ASSY. PUMP DISC.
5. NEEDLE- IDLE ADJUSTING	23. O-RING- PUMP NOZZLE
6. O-RING- IDLE ADJ. NEEDLE	24. RETAINER- PRIMARY IDLE JET
7. SPRING- IDLE ADJ. NEEDLE	25. JET- PRIMARY IDLE
8. HOSE- VACUUM BREAK ASSY.	26. RETAINER- SECONDARY IDLE JET
9. RETAINER- VACUUM BREAK PIN	27. JET- SECONDARY IDLE
10. SCREW & LOCKWASHER (2)- VACUUM BREAK ASSY.	28. JET- SECONDARY MAIN AIR BLEED
11. VACUUM BREAK ASSY.	29. TUBE- SECONDARY EMULSION
12. PLUG- FAST IDLE ROD SEAL	30. JET- SECONDARY MAIN
13. SCREW & LOCKWASHER (6)- BOWL COVER	31. JET- PRIMARY MAIN AIR BLEED
14. BOWL COVER ASSY.	32. TUBE- PRIMARY EMULSION
15. PIN- FLOAT HINGE	33. JET- PRIMARY MAIN
16. FLOAT ASSY.	34. MAIN BODY ASSY.
17. GASKET- BOWL COVER	
18. NEEDLE, SEAT & GASKET ASSY.	

CLEANING

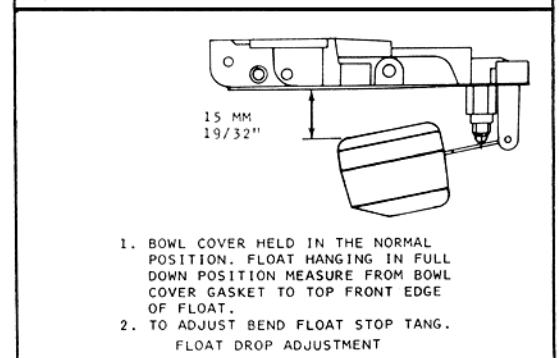
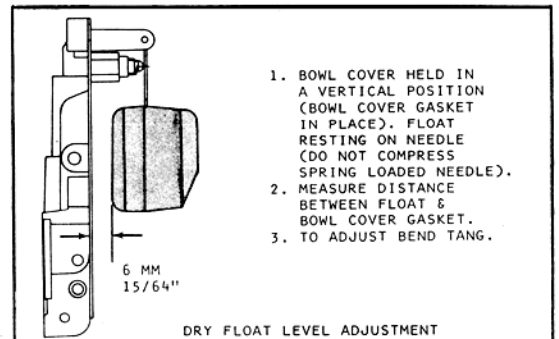
CLEANING MUST BE DONE WITH CARBURETOR DISASSEMBLED. SOAK PARTS LONG ENOUGH TO SOFTEN AND REMOVE ALL FOREIGN MATERIAL. USE A CARBURETOR CLEANING SOLVENT. MAKE CERTAIN THE THROTTLE BORES ARE FREE OF ALL CARBON AND VARNISH DEPOSITS. RINSE OFF IN SUITABLE SOLVENT. BLOW OUT ALL PASSAGES IN CASTINGS WITH COMPRESSED AIR AND CHECK CAREFULLY TO INSURE THOROUGH CLEANING OF OBSCURE AREAS. CAUTION: DO NOT SOAK FLOAT, PARTS CONTAINING RUBBER OR DIAPHRAGM ASSEMBLYS IN CLEANING SOLVENTS.

REASSEMBLY

REASSEMBLE IN REVERSE ORDER OF DISASSEMBLY. NOTE SPECIAL INSTRUCTIONS AND ADJUSTMENTS.

SPECIAL INSTRUCTIONS

IDLE ADJUSTING NEEDLE (5)- TURN IN UNTIL LIGHTLY SEATED THEN BACK OUT 2 TURNS.



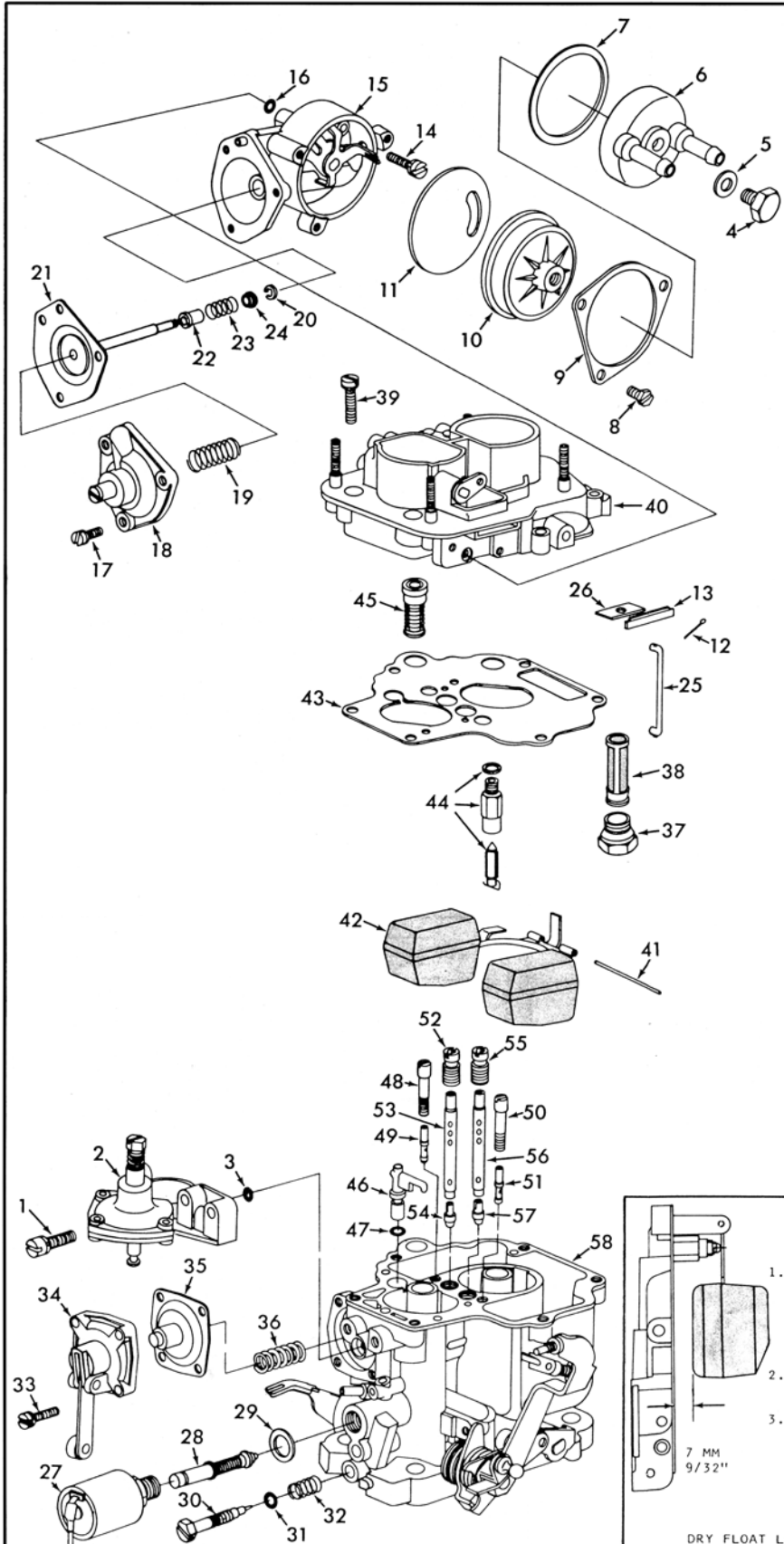
INSTRUCTION SHEET

WEBER CARBURETOR — MODEL 32 DATRA

08050-532

GENERAL EXPLODED VIEW

THE GENERAL DESIGN AND PARTS SHOWN WILL VARY TO
INDIVIDUAL UNITS COVERED ON THIS INSTRUCTION SHEET



DISASSEMBLY

USE EXPLODED VIEW AS A GUIDE. THE NUMERICAL SEQUENCE MAY GENERALLY BE FOLLOWED TO DISASSEMBLE UNIT FAR ENOUGH TO PERMIT CLEANING AND INSPECTION. NOTE SIZES OF JETS AND MAIN WELL TUBES AND THEIR LOCATION FOR PROPER ASSEMBLY. (RECORD SIZES BELOW). VENT VALVE ASSY. (45) HAS A RUBBER VALVE AND MUST BE REMOVED BEFORE CLEANING. VALVE RETAINER IS A PRESS FIT IN BOWL COVER.

NOMENCLATURE

REF. NO.	REF. NO.
1. SCREW & LOCKWASHER (2)- SPEED UP CONTROL	29. GASKET- SOLENOID
2. SPEED UP CONTROL ASSY.	30. NEEDLE- IDLE ADJUSTING
3. O-RING- SPEED UP CONTROL ASSY.	31. O-RING- IDLE ADJ. NEEDLE
4. SCREW- CHOKE WATER COVER	32. SPRING- IDLE ADJ. NEEDLE
5. WASHER- SCREW	33. SCREW & LOCKWASHER (4)- PUMP COVER
6. COVER- WATER HOUSING	34. PUMP COVER ASSY.
7. GASKET- COVER	35. DIAPHRAGM ASSY.- PUMP
8. SCREW (3)- CHOKE COVER RETAINER	36. SPRING- PUMP DIAPHRAGM
9. RETAINER- CHOKE COVER	37. PLUG- FUEL FILTER
10. CHOKE COIL COVER ASSY.	38. FILTER- FUEL
11. GASKET- CHOKE COVER ASSY.	39. SCREW & LOCKWASHER (6)- BOWL COVER
12. COTTER PIN- FAST IDLE ROD	40. BOWL COVER ASSY.
13. PLUG- FAST IDLE ROD SEAL	41. PIN- FLOAT HINGE
14. SCREW & WASHERS (2)- CHOKE HOUSING ASSY.	42. FLOAT ASSY.
15. CHOKE HOUSING ASSY.	43. GASKET- BOWL COVER
16. O-RING- CHOKE HOUSING ASSY.	44. NEEDLE, SEAT & GASKET ASSY.
17. SCREW & LOCKWASHER (3)- COVER ASSY.- DIAPHRAGM	45. VENT VALVE ASSY.
18. SPRING- DIAPHRAGM RETURN	46. NOZZLE ASSY.- PUMP DISC.
19. E-CLIP- DIAPHRAGM STEM	47. O-RING- PUMP NOZZLE
20. DIAPHRAGM ASSY.- VACUUM BREAK	48. RETAINER- PRIMARY IDLE JET
21. BUSHING- BUMPER SPRING	49. JET- PRIMARY IDLE
22. SPRING- BUMPER	50. RETAINER- SECONDARY IDLE JET
23. BUSHING- (SMALL)- BUMPER SPRING	51. JET- SECONDARY IDLE
24. ROD- FAST IDLE	52. JET- PRIMARY MAIN AIR BLEED
25. SEAL- FAST IDLE ROD	53. TUBE- PRIMARY EMULSION
26. SOLENOID- ANTI DIESELING	54. JET- PRIMARY MAIN
27. PLUNGER ASSY.- SOLENOID	55. JET- SECONDARY MAIN AIR BLEED
	56. TUBE- SECONDARY EMULSION
	57. JET- SECONDARY MAIN
	58. MAIN BODY ASSY.

CLEANING

CLEANING MUST BE DONE WITH CARBURETOR DISASSEMBLED. SOAK PARTS LONG ENOUGH TO SOFTEN AND REMOVE ALL FOREIGN MATERIAL. USE A CARBURETOR CLEANING SOLVENT. MAKE CERTAIN THE THROTTLE BORES ARE FREE OF ALL CARBON AND VARNISH DEPOSITS. RINSE OFF IN SUITABLE SOLVENT. BLOW OUT ALL PASSAGES IN CASTINGS WITH COMPRESSED AIR AND CHECK CAREFULLY TO INSURE THOROUGH CLEANING OF OBSCURE AREAS. CAUTION: DO NOT SOAK FLOAT, SOLENOIDS, PARTS CONTAINING RUBBER OR DIAPHRAGM ASSEMBLYS IN CLEANING SOLVENTS.

REASSEMBLY

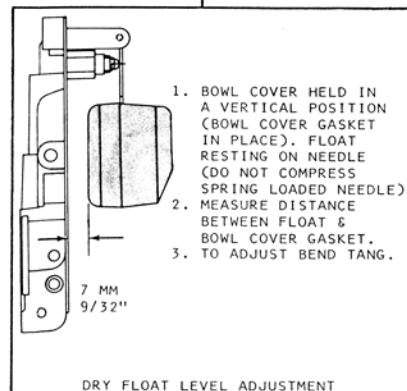
REASSEMBLE IN REVERSE ORDER OF DISASSEMBLY. NOTE SPECIAL INSTRUCTIONS- AND ADJUSTMENTS.

SPECIAL INSTRUCTIONS

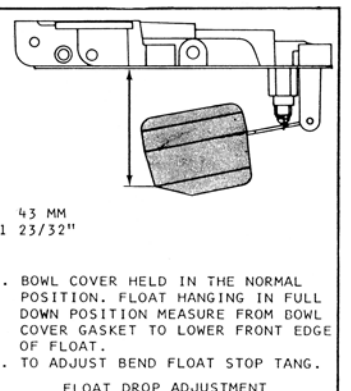
PUMP DIAPHRAGM SPRING (36)- SHORTER THAN SPRING (19)

IDLE ADJUSTING NEEDLE (30)- TURN IN UNTIL LIGHTLY SEATED THEN BACK OUT 2 TURNS.

CHOKE COIL & COVER ASSY. (10)- WHEN INSTALLING BE SURE TO INSTALL BI-METAL SPRING HOOK IN SLOT OF LEVER. ALIGN MARK ON CHOKE COVER WITH MARK ON CHOKE HOUSING.



DRY FLOAT LEVEL ADJUSTMENT



FLOAT DROP ADJUSTMENT