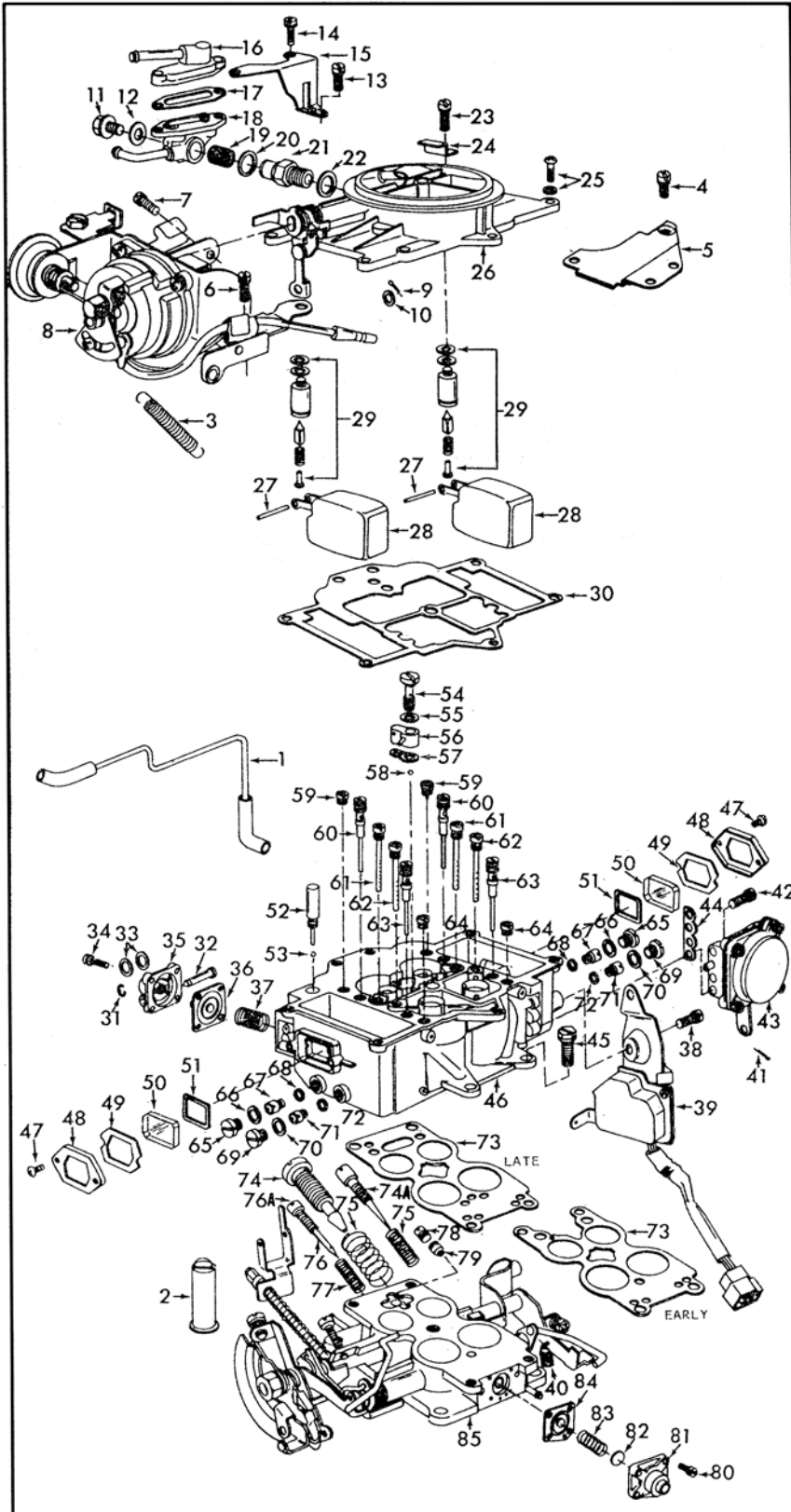


# INSTRUCTION SHEET

## (NIKKI) ZENITH STROMBERG CARBURETOR MAZDA ROTARY

### GENERAL EXPLODED VIEW

THE GENERAL DESIGN AND PARTS SHOWN WILL VARY TO  
INDIVIDUAL UNITS COVERED ON THIS INSTRUCTION SHEET



### DISASSEMBLY

USE EXPLODED VIEW AS A GUIDE. THE NUMERICAL SEQUENCE MAY GENERALLY BE FOLLOWED TO DISASSEMBLE UNIT FAR ENOUGH TO PERMIT CLEANING AND INSPECTION. NOTE: JETS ARE IN PAIRS AND COLOR CODED. PRIMARY JETS ARE BRASS COLOR AND SECONDARY JETS ARE SILVER COLOR. (RECORD SIZES BELOW). DISASSEMBLY OF SECONDARY VACUUM UNIT NOT NECESSARY UNLESS DIAPHRAGM NEEDS TO BE REPLACED.

### NOMENCLATURE

REF. NO.	REF. NO.
1. VACUUM TUBE ASSY. - CHOKE PULL OFF	43. SECONDARY DIAPHRAGM ASSY.
2. SPRING & COVER - THROTTLE RETURN	44. GASKET - SECONDARY DIAPHR. ASSY.
3. SPRING - FAST IDLE LEVER	45. SCREW & LOCKWASHER (4) - BOWL TO THROTTLE BODY
4. SCREW & LOCKWASHER (2) - BRACKET	46. BOWL ASSY. - FUEL
5. BRACKET	47. SCREW (4) - WINDOW RETAINERS
6. SCREW & LOCKWASHER - GRD. LEAD ELEC. CHOKE	48. RETAINER (2) - WINDOW
7. SCREW & LOCKWASHER (3) - CHOKE AND BRACKET ASSY.	49. GASKET (2) - WINDOW
8. CHOKE AND BRACKET ASSY.	50. WINDOW (2) - FUEL BOWL
9. COTTER PIN - FAST IDLE ROD	51. GASKET (2) - WINDOW (RUBBER)
10. WASHER - FAST IDLE ROD	52. PLUG - INLET CHECK BALL
11. BOLT - FUEL RETURN VALVE	53. BALL - PUMP INLET CHECK
12. GASKET - BOLT	54. SCREW - PUMP NOZZLE
13. SCREW & LOCKWASHER - FUEL VALVE BRACKET	55. GASKET - SCREW
14. SCREW & LOCKWASHER (2) - BRACKET & COVER	56. NOZZLE - PUMP
15. BRACKET - FUEL VALVE	57. GASKET - PUMP NOZZLE
16. COVER - FUEL VALVE	58. BALL - PUMP DISC. BALL
17. GASKET - COVER	59. JET (2) - SLOW AIR BLEED P/S
18. VALVE - FUEL RETURN	60. JET (2) - SLOW P/S
19. SCREEN - FUEL INLET	61. JET (2) - MAIN AIR BLEED P/S
20. GASKET - FUEL VALVE	62. JET (2) - MAIN AIR BLEED. S/S
21. FITTING - FUEL INLET	63. JET (2) - STEP S/S
22. GASKET - FITTING	64. JET (2) - STEP AIR BLEED S/S
23. SCREW & LOCKWASHER - BRACKET	65. PLUG (2) - PRI. MAIN JET
24. BRACKET	66. GASKET (2) - PRI. PLUG
25. SCREW & LOCKWASHER (3) - BOWL COVER	67. JET (2) - PRI. MAIN
26. BOWL COVER ASSY.	68. GASKET (2) - PRI. MAIN JET
27. PIN (2) - FLOAT	69. PLUG (2) - SEC. MAIN JET
28. FLOAT & LEVER ASSY. (2)	70. GASKET (2) - SEC. PLUG
29. NEEDLE, SEAT AND GASKET ASSY. (2)	71. JET (2) - SEC. MAIN
30. GASKET - BOWL COVER	72. GASKET (2) - SEC. MAIN JET
31. E-CLIP RETAINER - PUMP LEVER PIN	73. GASKET - THROTTLE BODY
32. PIN - PUMP LEVER	74. NEEDLE - IDLE BY PASS (R.P.M. ADJ.)
33. SHIM (2) - PUMP LEVER	74A. NEEDLE - IDLE MIXTURE (1972)
34. SCREW & LOCKWASHER (4) - PUMP COVER	75. SPRING - NEEDLE
35. COVER - PUMP DIAPHRAGM	76. NEEDLE - IDLE MIXTURE
36. DIAPHRAGM - PUMP	76A. NEEDLE - IDLE LIMITER (1972)
37. SPRING - DIAPHRAGM RETURN	77. SPRING - NEEDLE
38. SCREW & LOCKWASHER (2) - IDLE SWITCH	78. PLUG - AUXILIARY SLOW JET
39. IDLE SWITCH	79. JET - AUXILIARY SLOW
40. SPRING - SWITCH LEVER	80. SCREW & LOCKWASHER (4) - COVER
41. COTTER PIN - SECONDARY THROTTLE LINK	81. COVER - AUXILIARY
42. SCREW & LOCKWASHER (3) - SEC. THROTTLE DIAPHR. ASSY.	82. SHIM - SPRING
	83. SPRING - DIAPHRAGM RETURN
	84. DIAPH. ASSY. - AUXILIARY SLOW
	85. THROTTLE BODY ASSY.

P/S=PRIMARY SIDE  
S/S=SECONDARY SIDE

### CLEANING

CLEANING MUST BE DONE WITH CARBURETOR DISASSEMBLED. SOAK PARTS LONG ENOUGH TO SOFTEN AND REMOVE ALL FOREIGN MATERIAL. USE A CARBURETOR CLEANING SOLVENT. MAKE CERTAIN THE THROTTLE BODY IS FREE OF ALL CARBON DEPOSITS. WASH OFF IN SUITABLE SOLVENT. BLOW OUT ALL PASSAGES IN CASTINGS WITH COMPRESSED AIR AND CHECK CAREFULLY TO INSURE THOROUGH CLEANING OF OBSCURE AREAS. CAUTION: DO NOT SOAK RUBBER OR PLASTIC PARTS IN SOLVENTS OR UNITS SUCH AS FLOAT (28) SECONDARY DIAPHRAGM ASSY. (43) IDLE SWITCH (39) CHOKE ASSY. (8).

### REASSEMBLY

REASSEMBLE IN REVERSE ORDER OF DISASSEMBLY. NOTE SPECIAL INSTRUCTIONS AND ADJUSTMENTS.

# ADJUSTMENTS

## SPECIAL INSTRUCTIONS

(1972) IDLE LIMITER NEEDLE (76A) - TURN IN UNTIL LIGHTLY SEATED, THEN BACK OUT 3 1/2 TURNS.

(1972) IDLE MIXTURE NEEDLE (74A) - TURN IN UNTIL LIGHTLY SEATED, THEN BACK OUT 1 1/2 TURNS.

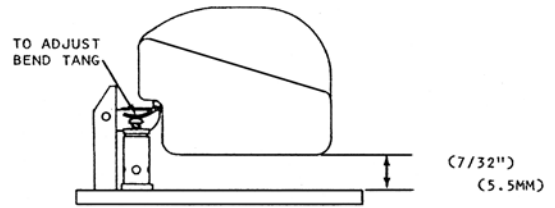
(1973) IDLE MIXTURE NEEDLE (76) - TURN IN UNTIL LIGHTLY SEATED, THEN BACK OUT 2 TURNS.

(1973) IDLE SPEED ADJUSTING NEEDLE (74) - TURN IN UNTIL LIGHTLY SEATED, THEN BACK OUT 5 TURNS.

CHOKE & BRACKET ASSY. (8) - WHEN INSTALLING BE SURE LEVER ON CHOKE SHAFT IS PROPERLY INSERTED IN HOOK ON CHOKE COIL SPRING.

FAST IDLE ADJUSTMENT - CHOKE VALVE HELD IN CLOSED POSITION. MEASURE CLEARANCE BETWEEN LOWER EDGE OF PRIMARY THROTTLE VALVE & BORE OF CARBURETOR. (3/64") (1.2MM) TO ADJUST BEND FAST IDLE ROD.

FIG. 1

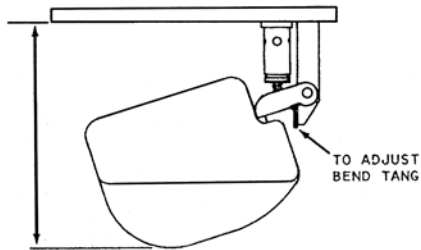


BOWL COVER HELD IN THE INVERTED POSITION, FLOAT RESTING ON NEEDLE OF ITS OWN WEIGHT. MEASURE DISTANCE BETWEEN SURFACE OF BOWL COVER AND TOP OF FLOAT. (DO NOT COMPRESS SPRING LOADED NEEDLE.) (CHECK EACH FLOAT)

DRY FLOAT LEVEL ADJUSTMENT

FIG. 2

(2 3/16")  
(55-56MM)



BOWL COVER HELD UPRIGHT WITH FLOAT HANGING FREE. MEASURE DISTANCE FROM GASKET SURFACE OF BOWL COVER TO LOWEST POINT OF FLOAT. (CHECK EACH FLOAT)

FLOAT DROP ADJUSTMENT

FIG. 3

## SLOW IDLE ADJUSTMENT

USE FACTORY CAR MANUAL PROCEDURE FOR SETTING SLOW IDLE IF AVAILABLE

### SUPPLEMENT

1972 MODELS. ADJUST IDLE SPEED (R.P.M.) WITH STOP SCREW TO 900 R.P.M. ADJUST IDLE MIXTURE SCREW (74A) (UPPER SCREW) TO OBTAIN THE BEST IDLE. RESET R.P.M. IF NECESSARY.

1973 MODELS. ADJUST IDLE SPEED (R.P.M.) WITH IDLE BYPASS SCREW (74) (UPPER LARGE SCREW) TO 900 R.P.M. THEN ADJUST IDLE MIXTURE SCREW TO OBTAIN THE BEST IDLE. IT WILL BE NECESSARY TO ALTER BETWEEN THE TWO TO OBTAIN THE BEST IDLE AT 900 R.P.M.

FIG. 4