

FUEL SYSTEM

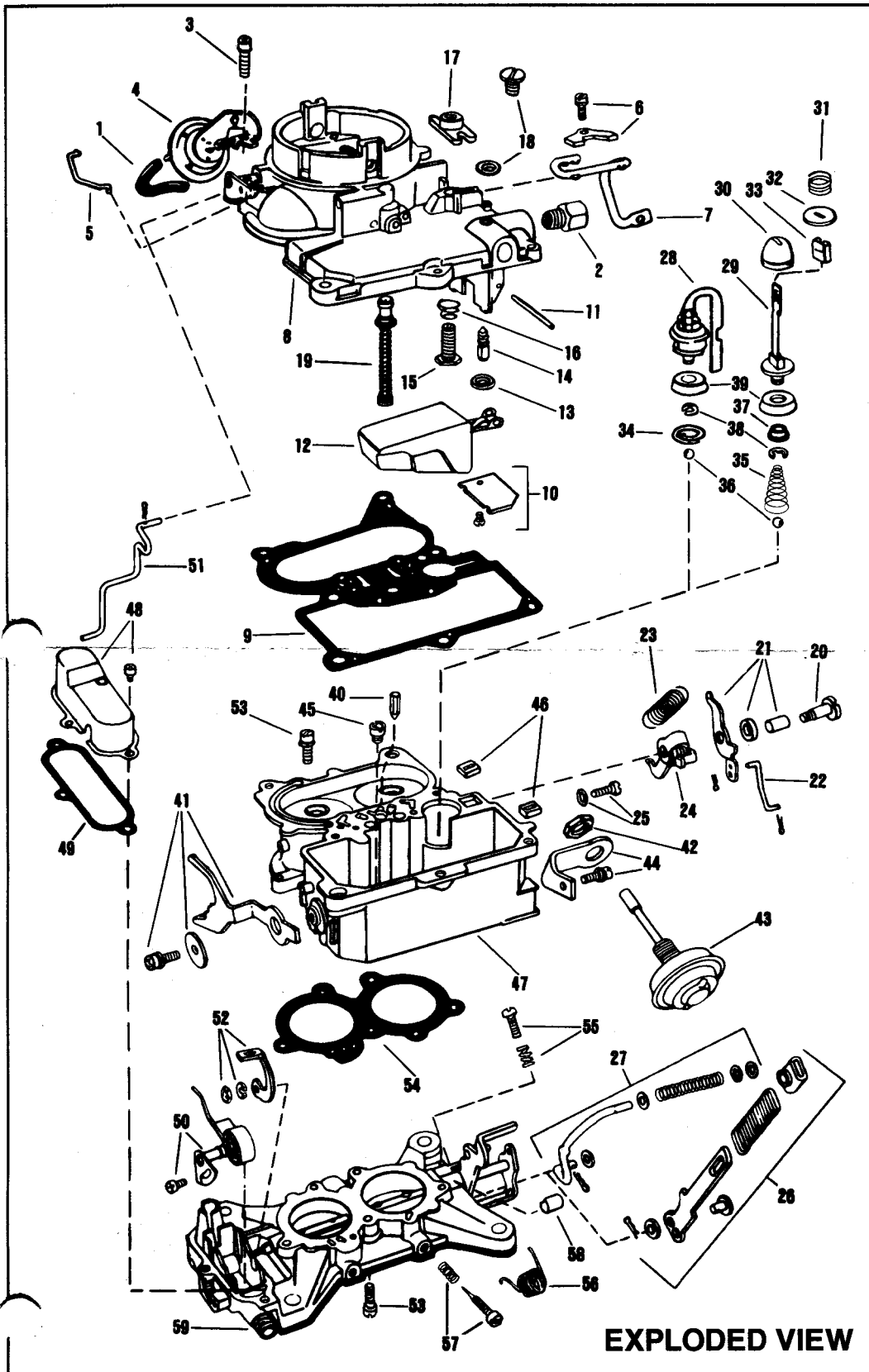
SERVICE INSTRUCTION WORKSHEET

TO REPAIR

GF3570-1

HOLLEY CARBURETOR

2 BARREL—Model 2209



EXPLODED VIEW

1. Carefully read the text in the following pages to become familiar with the contents of this worksheet before performing carburetor overhaul.
2. The exploded view is typical of the model carburetor this kit will service. The view may differ slightly from the actual carburetor being overhauled.
3. Use the exploded view as a guide. The numerical sequence of the parts list may generally be followed to disassemble the carburetor far enough to permit cleaning and inspection.
4. Parts list shown DOES NOT reflect the contents of the kit.
5. Kit may contain extra parts intended for other carburetors within this group. Substitute identical replacement parts for original worn parts found in carburetor.

CLEANING

Cleaning must be done with carburetor disassembled. Use spray cleaner and a stiff bristle brush to remove dirt and carbon deposits. Do not use abrasives and wires to clean parts and passageways. Wash off in suitable solvent, and clear all passageways with compressed air.

Caution: When cleaning with solvent do not soak or spray parts containing rubber, leather, plastic and electrical components.

PARTS LIST

1. Vacuum diaphragm hose
2. Fuel inlet fitting
3. Main body & airhorn screw
4. Choke diaphragm
5. Diaphragm link rod
6. Pump rod clamp & screw
7. Pump rod
8. Airhorn assembly
9. Main body gasket
10. Fuel bowl baffle & screw
11. Float hinge pin
12. Float
13. Retainer
14. Needle valve
15. Bowl vent screw
16. Bowl vent spring
17. Vent valve
18. Fuel level plug & gasket
19. Power valve assembly
20. Lever screw
21. Pump lever assembly
22. Link
23. Spring
24. Pump lever
25. Pump stop screw and gasket
26. Pump link assembly
27. Pump control rod assembly
28. Accelerator pump assembly
29. Accelerator pump
30. Stem seal
31. Vent return spring
32. Vent washer
33. Vent adjusting clip
34. Inlet valve retainer
35. Return spring
36. Inlet ball valve
37. Cup liner
38. Cup retainer
39. Pump cup
40. Pump discharge needle
41. Fast idle cam assembly
42. Dashpot mounting nut
43. Dashpot assembly
44. Mounting bracket & screw
45. Main jet
46. Pump rod alignment guides
47. Main body
48. Choke cover & screw
49. Choke cover gasket
50. Choke thermostats assembly
51. Choke rod
52. Unloader lever assembly
53. Main body & throttle body screw
54. Gasket
55. Throttle adjusting screw & spring
56. Throttle return spring
57. Idle adjusting screw & spring
58. Throttle shaft bushing
59. Throttle body

PARTS LIST SHOWN DOES NOT REFLECT THE CONTENTS OF THE KIT

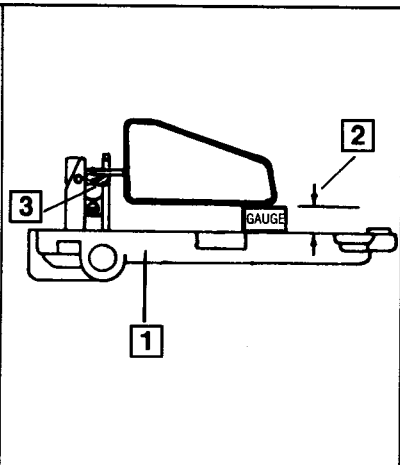
REMOVAL & INSTALLATION NOTES

1. Cover opening on intake manifold after carburetor is removed.
2. Take off staking from air horn for easy removal of power valve assembly (19).
3. Power valve located in bottom of main body should not be removed.
4. When cleaning carburetor parts do not soak choke thermostat assembly (50). Follow other cleaning note.
5. Before removing idle adjusting screws (57), turn in until lightly seated counting number of turns. Record for proper installation.
6. Install parts and components in reverse order of removal.
7. To replace pump cup, first remove 'E' clip (38).
8. When installing idle adjusting screw (57), turn in until lightly seated, then back out number of turns recorded earlier.
9. After installation of power valve assembly (19), lightly stake casting around washer.
10. When installing choke rod (51), make sure lower end is between stat spring and vacuum piston lifter spring as shown in Fig. 7.

ADJUSTMENT DATA

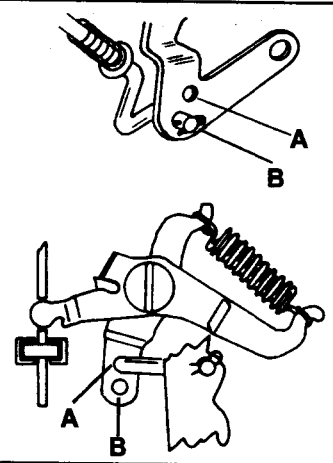
**FIG. 1
FLOAT LEVEL ADJUSTMENT**

1. Invert air horn assembly and remove gasket.
 2. Measure distance from air horn surface to top of float as shown. It should be as specified.
 3. To adjust, bend float tab.
- Caution:** Do not exert pressure on needle valve as incorrect setting may result.



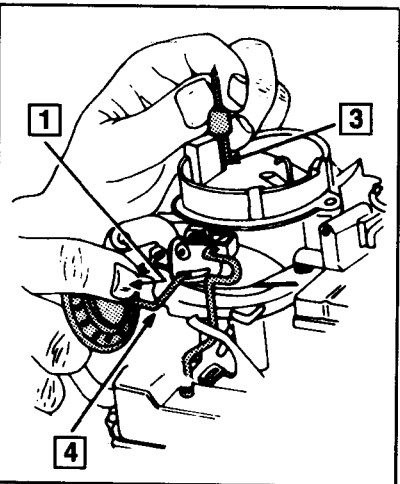
**FIG. 2
PUMP LINK POSITION**

Install pump operating link in hole "A" or "B" as specified.



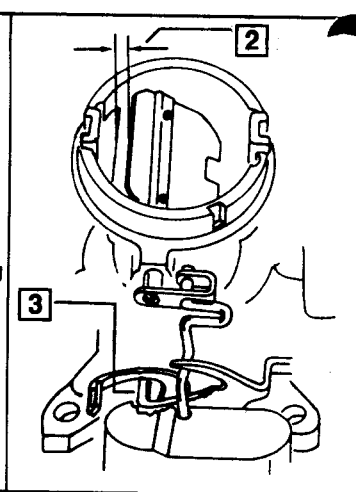
**FIG. 3
CHOKE DIAPHRAGM ADJUSTMENT**

1. With throttle valves closed and throttle lever tab on high step of fast idle cam, depress choke diaphragm stem until fully seated.
2. Close choke valve lightly to remove slack from linkage.
3. Measure distance between upper edge of choke valve and air horn wall using a gauge or drill bit. It should be as specified.
4. To adjust, bend diaphragm connecting link.



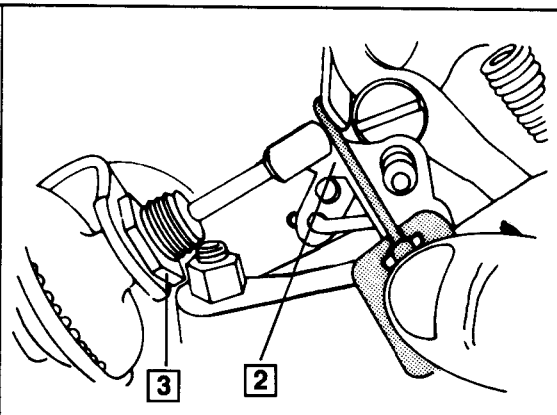
**FIG. 4
UNLOADER ADJUSTMENT**

1. Hold throttle valves in wide open position.
2. Lightly close choke valve and measure distance between upper edge of choke valve and wall of air horn using a gauge or drill bit. It should be as specified.
3. To adjust, bend tab or fast idle lever.



**FIG. 5
DASHPOT ADJUSTMENT
(Where Applicable)**

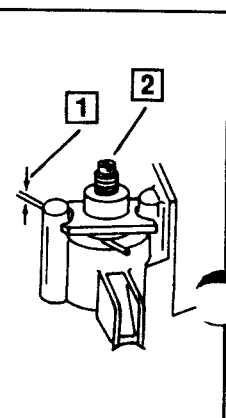
1. Hold throttle valves fully closed in curb idle position.
2. Depress dashpot plunger until fully seated and measure distance between top of plunger and tab on throttle lever using a gauge or drill bit.
3. To adjust, loosen locknut and turn dashpot in or out of mounting bracket. Retighten locknut.



**FIG. 6
BOWL VENT ADJUSTMENT**

NOTE: Perform slow idle adjustment before adjusting bowl vent. (See Fig. 8).

1. With engine slow idle adjusted, measure distance between vent valve and vent seat using a gauge or drill bit. It should be as specified.
2. To adjust, turn adjusting screw in or out as necessary.



ADJUSTMENT DATA (Cont'd)

FIG. 7

CHOKOMATIC CHOKE ADJUSTMENT

1. Loosen clampscrew and rotate plate until mark on plate aligns with mark on housing. Tighten clampscrew.
Do not vary choke setting more than 2 graduations either way from specified setting.

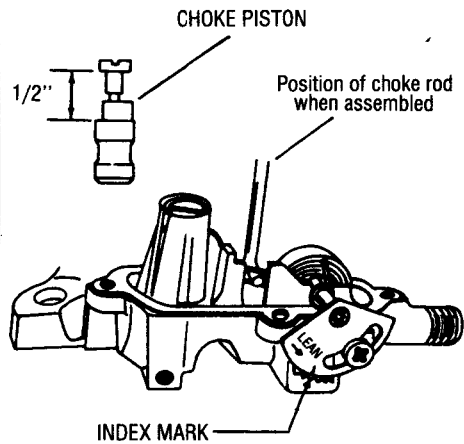
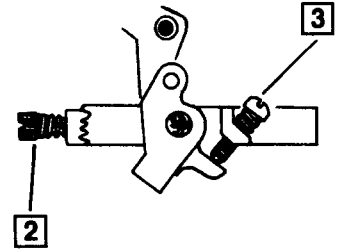


FIG. 8

SLOW IDLE ADJUSTMENT

1. Allow engine to reach normal operating temperature. Choke valve at wide open position.
2. Adjust idle mixture screws to a smooth idle.
3. Adjust idle stop screw for proper idle R.P.M. as specified in tune-up section of service manual.



SPECIFICATION CHART

Year	Application	Float Level Fig. 1	Pump Link Position Fig. 2	Choke Diaphragm Fig. 3	Unloader Fig. 4	Dashpot Fig. 5	Bowl Vent Fig. 6	Auto. Choke Fig. 7
AMC								
1967	290 Eng. -Carb. No. R4445	11/32	A	11/64	3/16	—	5/64	—
1967-66	290, 343 Eng. -Carb. Nos. R3307-1; 3308-1; R3484-1; R3905	11/32	A	3/16	3/16	— ¹	5/64	1NR ²
	290 Eng. -Carb. No. R3483-1	11/32	A	3/16	3/16	5/32	5/64	Index
	287 Eng.	11/32	B	11/64	3/16	5/32 ³	5/64	Index
1965	287, 327 Eng.	11/32	A	11/64	3/16	5/32	5/64	Index
KAISER-JEEP								
1967-65	327 Eng.	9/16	B	11/64	3/16	5/32	—	1NR ⁴

FOOTNOTES:

- ¹ Carb. No. R3307-1 set 5/32".
- ² Carb. Nos. R3307-1; 3308-1 set 1NL.
- ³ Carb. No. R3304 set 3/64.
- ⁴ Carb. Nos. R3234; R3262 set Index.

ABBREVIATIONS:

- NL - Notch Lean
NR - Notch Rich