

# FUEL SYSTEM

## SERVICE INSTRUCTION WORKSHEET

TO REPAIR

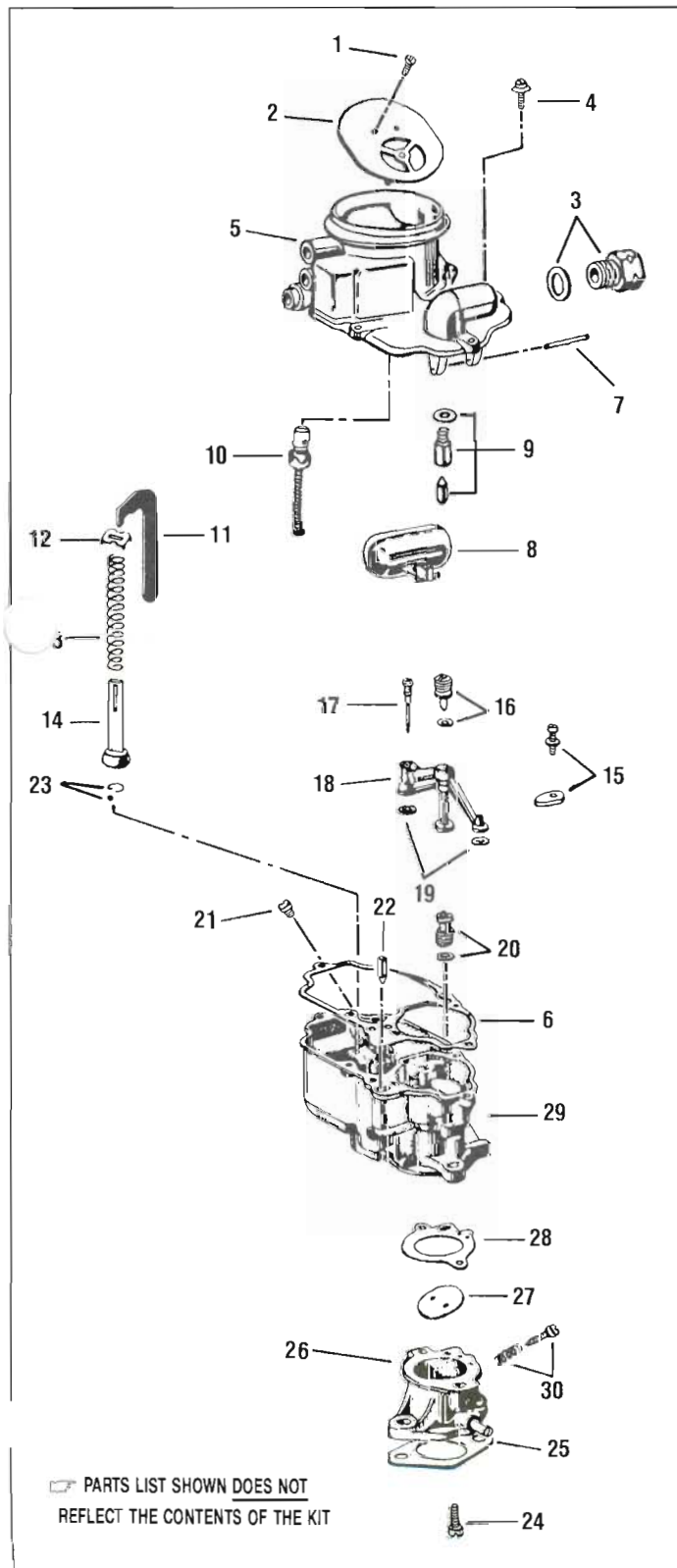
GF1249V-2

HOLLEY CARBURETOR

1 BARREL • Model 847

1. Carefully read the text in the following pages to become familiar with the contents of this worksheet before performing carburetor overhaul.
2. The exploded view is typical of the model carburetor this kit will service. The view may differ slightly from the actual carburetor being overhauled.

3. Use the exploded view as a guide. The numerical sequence of the parts list generally be followed to disassemble the carburetor far enough to permit cleaning and inspection.
4. Parts list shown **DOES NOT** reflect the contents of the kit.
5. Kit may contain extra parts intended for other carburetors within this group. Substitute identical replacement parts for original worn parts found in carburetor.



☐ PARTS LIST SHOWN DOES NOT REFLECT THE CONTENTS OF THE KIT

### CLEANING

Cleaning must be done with carburetor disassembled. Use spray cleaner and a stiff bristle brush to remove dirt and carbon deposits. Do not use abrasives and wires to clean parts and passageways. Wash off in suitable solvent, and clear all passageways with compressed air.  
**Caution:** When cleaning with solvent do not soak or spray parts containing rubber, leather, plastic and electrical components.

### PARTS LIST

- |                                 |                                   |
|---------------------------------|-----------------------------------|
| 1. Screw, choke valve (2)*      | 16. Plug & washer, nozzle         |
| 2. Choke valve assembly*        | 17. Idle tube                     |
| 3. Fitting & washer, fuel inlet | 18. Nozzle bar assembly           |
| 4. Screw, air horn (5)          | 19. Washer, nozzle bar (2)        |
| 5. Air horn assembly            | 20. Power jet assembly            |
| 6. Gasket, air horn             | 21. Main jet                      |
| 7. Pin, float hinge             | 22. Valve, pump                   |
| 8. Float assembly               | 23. Check ball & retainer         |
| 9. Needle & seat assembly       | 24. Screw, throttle body (2)      |
| 10. Power piston assembly       | 25. Gasket, flange                |
| 11. Pump operating rod          | 26. Throttle body assembly        |
| 12. Retainer, spring            | 27. Throttle valve*               |
| 13. Spring, pump return         | 28. Gasket, throttle body         |
| 14. Pump piston assembly        | 29. Main body assembly            |
| 15. Screw & hold down clamp     | 30. Idle adjusting screw & spring |

\* Do not remove unless necessary.

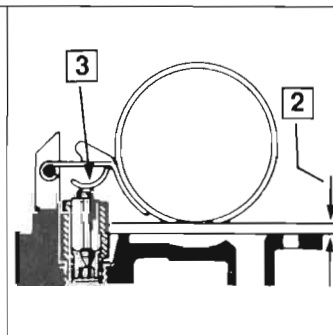
NOTE: Pump piston cup (14) must be flared then soaked in clean oil for a few minutes before installation.

### ADJUSTMENT DATA

#### FIG. 1—FLOAT ADJUSTMENT

1. Invert air horn assy. and remove gasket. Allow float to hang freely.
2. Measure distance from casting to top of float (not to soldered seam) using a gauge or drill bit.
3. To adjust, bend float arm tab.

**CAUTION:** Do not exert pressure on needle valve as incorrect setting may result.



#### FIG. 2—IDLE ADJUSTMENT

1. Turn in idle adjusting screw until lightly seated. Then, open adjusting screw as indicated in the specification chart.

NOTE: For richer mixture, turn screw further out.

Engine speed should not idle below the idle speed indicated in specification chart with manual transmission in Neutral and automatic transmission in Drive.

### SPECIFICATIONS:

Year	Carburetor Tag Nos.	Float Adjustments	Idle Adjustment	
			Turns to Open	Eng. RPM at Idle Speed
1951-41	1GA; 1HA; 5GA; 7HA; 7HT; 8HT-9510A	3/16	1 ± 1/2	425—450