

INSTRUCTION SHEET

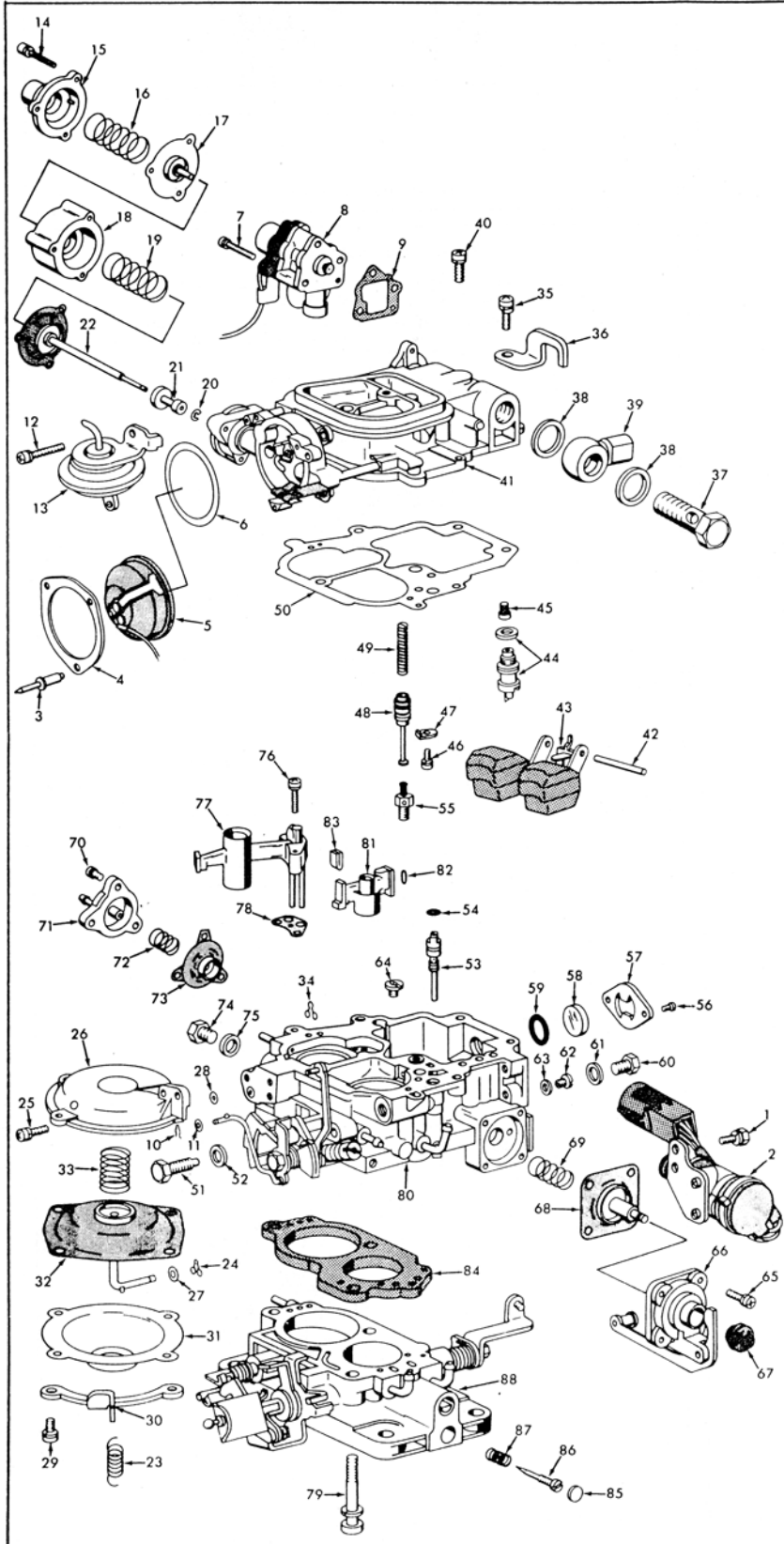
OFF VEHICLE CARBURETOR SERVICE

AISAN 2 VENTURI

1987-88 RANGER

GENERAL EXPLODED VIEW

THE GENERAL DESIGN AND PARTS SHOWN WILL VARY TO INDIVIDUAL UNITS COVERED ON THIS INSTRUCTION SHEET.



DISASSEMBLY

USE EXPLODED VIEW AS A GUIDE. THE NUMERICAL SEQUENCE MAY GENERALLY BE FOLLOWED TO DISASSEMBLE UNIT FAR ENOUGH TO PERMIT CLEANING AND INSPECTION. DRILL OR CUT OFF POP RIVET HEADS (3) TO REMOVE CHOKE COVER. TO REMOVE PLUG (85) COVERING IDLE NEEDLE, CENTER PUNCH CENTER OF PLUG AND CAREFULLY DRILL A HOLE IN PLUG. (NOTE THERE IS ONLY .040" CLEARANCE BETWEEN PLUG AND IDLE NEEDLE.) USE A PULLER OR PRY PLUG FROM HOLE.

NOMENCLATURE

REF. NO.	REF. NO.
1. SCREW & LOCKWASHER (2) - IDLE SPEED CONTROL	41. BOWL COVER ASSY.
2. IDLE SPEED CONTROL ASSY.	42. PIN - FLOAT
3. POP RIVET (3) - CHOKE RETAINER	43. FLOAT & LEVER ASSY.
4. RETAINER - CHOKE COVER	44. NEEDLE & SEAT ASSY.
5. CHOKE COVER ASSY. - ELECTRIC	45. SCREEN - FUEL INLET
6. GASKET - CHOKE COVER	46. SCREW & LOCKWASHER - RETAINER
7. SCREW & LOCKWASHER (3) - BOWL VENT ASSY.	47. RETAINER - POWER PISTON
8. BOWL VENT ASSY.	48. PISTON - POWER
9. GASKET - BOWL VENT ASSY.	49. SPRING - POWER PISTON
10. RETAINER - CHOKE OPENER LINK	50. GASKET - BOWL COVER
11. WASHER - CHOKE OPENER LINK	51. PLUG - IDLE PASSAGE (LONG)
12. SCREW & LOCKWASHER - CHOKE OPENER	52. GASKET - PLUG
13. FAST IDLE CAM BREAKER ASSY.	53. JET - SLOW
14. SCREW & LOCKWASHER (3) - COVER	54. O RING - SLOW JET
15. COVER - CHOKE PULLDOWN	55. POWER VALVE & JET ASSY.
16. SPRING - DIAPHRAGM	56. SCREW (2) - WINDOW RETAINER
17. DIAPHRAGM - SECOND STAGE PULLDOWN	57. RETAINER - WINDOW
18. HOUSING - CHOKE PULLDOWN	58. WINDOW - FUEL LEVEL
19. SPRING - DIAPHRAGM	59. O RING - WINDOW
20. E CLIP - STEM GUIDE	60. PLUG - PRI. MAIN JET
21. GUIDE BUSHING - STEM	61. GASKET - PLUG
22. DIAPHRAGM - FIRST STAGE PULLDOWN	62. JET - PRIMARY MAIN
23. SPRING - SECONDARY LOCKOUT LEVER	63. GASKET - PRI. MAIN JET
24. RETAINER - SEC. DIAPHRAGM LINK	64. JET - SECONDARY MAIN (NO GASKET)
25. SCREW & LOCKWASHER (2) - SEC. DIAPHRAGM ASSY.	65. SCREW & LOCKWASHER (4) - PUMP COVER
26. SECONDARY DIAPHRAGM ASSY.	66. COVER & LEVER - PUMP
27. WASHER - SEC. DIAPHRAGM LINK	67. BOOT - PUMP STEM
28. GASKET - SEC. DIAPHRAGM ASSY.	68. DIAPHRAGM ASSY. - PUMP
29. SCREW & LOCKWASHER (4) - SEC. DIAPHRAGM COVER	69. SPRING - PUMP DIAPHRAGM
30. BRACKET - SEC. SPRING	70. SCREW & LOCKWASHER (3) - COVER
31. COVER - SEC. DIAPHRAGM	71. COVER - AUX. PUMP DIAPHRAGM
32. DIAPHRAGM ASSY. - SECONDARY THROTTLE	72. SPRING - AUX. PUMP DIAPHRAGM
33. SPRING - SEC. DIAPHRAGM	73. DIAPHRAGM ASSY. - AUX. PUMP
34. RETAINER - FAST IDLE LINK (UPPER)	74. PLUG - PASSAGE
35. SCREW & LOCKWASHER - FUEL UNION BRACKET	75. GASKET - PLUG
36. BRACKET - FUEL UNION	76. SCREW & LOCKWASHER (2) - SECONDARY VENTURI
37. BOLT - FUEL UNION	77. SECONDARY VENTURI ASSY.
38. GASKET (2) - FUEL UNION	78. GASKET - SEC. VENTURI
39. FUEL UNION	79. SCREW & LOCKWASHER (3) - THROTTLE BODY
40. SCREW & LOCKWASHER (4) - BOWL COVER	80. BOWL ASSY.
	81. PRIMARY VENTURI ASSY.
	82. O RING - PRI. VENTURI
	83. RETAINER - PRI. VENTURI
	84. GASKET - THROTTLE BODY
	85. PLUG - IDLE NEEDLE
	86. NEEDLE - IDLE ADJUSTING
	87. SPRING - IDLE ADJ. NEEDLE
	88. THROTTLE BODY ASSY.

CLEANING

CLEANING MUST BE DONE WITH CARBURETOR DISASSEMBLED. USE A CARBURETOR CLEANING SOLVENT. SOAK PARTS LONG ENOUGH TO SOFTEN AND REMOVE ALL FOREIGN MATERIAL. MAKE CERTAIN THE THROTTLE BORES ARE FREE OF ALL CARBON DEPOSITS. WASH OFF IN SUITABLE SOLVENT. BLOW OUT ALL PASSAGES IN CASTINGS WITH COMPRESSED AIR AND CHECK CAREFULLY TO INSURE THOROUGH CLEANING OF OBSCURE AREAS. CAUTION: DO NOT SOAK RUBBER PARTS, DIAPHRAGMS OR ITEMS SUCH AS (2), (5), (8), (11), (13), (43), (44), (45), IN CLEANING SOLVENTS.

REASSEMBLY

REASSEMBLE IN REVERSE ORDER OF DISASSEMBLY. NOTE SPECIAL INSTRUCTIONS AND ADJUSTMENTS.

SPECIAL INSTRUCTIONS

IDLE ADJUSTING NEEDLE (86) - TURN NEEDLE IN UNTIL LIGHTLY SEATED THEN BACK OUT 2 1/2 TURNS.

ADJUSTMENTS

① BOWL COVER INVERTED. (NO GASKET). FLOAT RESTING ON NEEDLE OF ITS OWN WEIGHT. MEASURE DISTANCE BETWEEN FLOAT AT TOE END AND CASTING SURFACE.

SETTING
6.4MM

TO ADJUST BEND FLOAT LEVER.

CAUTION: DO NOT EXERT PRESSURE ON RESILIENT NEEDLE VALVE.

DRY FLOAT LEVEL ADJUSTMENT FIG. 1

① BOWL COVER INVERTED. RAISE FLOAT BY HAND UNTIL IT CONTACTS FLOAT HANGER. MEASURE DISTANCE FROM BOTTOM OF FLOAT TO CASTING SURFACE.

47.1MM SETTING
+/- 1.0MM

TO ADJUST BEND STOP TAB.

FLOAT DROP ADJUSTMENT FIG. 2

TWO STAGE CHOKE PULLDOWN ADJUSTMENT

1. FIRST STAGE

- SET THE CHOKE ON HIGH CAM BY DEPRESSING THE THROTTLE LEVER TO THE 1/2 OPEN POSITION AND THEN PUSHING THE CHOKE PLATE COMPLETELY CLOSED. WHILE HOLDING THE CHOKE PLATE CLOSED, RELEASE THE THROTTLE LEVER AND THEN RELEASE THE CHOKE PLATE.
- ACTIVATE THE FIRST STAGE PULLDOWN BY APPLYING AN EXTERNAL VACUUM SOURCE (16 IN.-HG. MINIMUM) TO THE FIRST STAGE VACUUM CONNECTION.
- CHECK THE CHOKE PLATE ANGLE (38° FOR 1987, 40° FOR 1988), OR CHECK THE CLEARANCE BETWEEN LOWER EDGE OF CHOKE PLATE AND AIRHORN WALL (.112 IN. FOR 1987; .128 IN. FOR 1988) BY USING A DRILL OF THE PROPER DIAMETER.
- IF ADJUSTMENT IS NEEDED, BEND THE FIRST STAGE ADJUSTMENT LEVER TO GET THE CORRECT ANGLE OR CLEARANCE.

2. SECOND STAGE

- ACTIVATE THE SECOND STAGE PULLDOWN BY APPLYING AN EXTERNAL VACUUM SOURCE (16 IN.-HG. MINIMUM) TO THE SECOND STAGE VACUUM CONNECTION HOLD A VACUUM TO FIRST STAGE VACUUM CONNECTION AT THE SAME TIME.
- CHECK THE CHOKE PLATE ANGLE TO BE 62° OR CHECK THE CLEARANCE BETWEEN LOWER EDGE OF CHOKE PLATE AND AIRHORN WALL TO BE .370 IN. BY USING A DRILL OF THE PROPER DIAMETER.
- IF ADJUSTMENT IS NEEDED, TURN THE SECOND STAGE ADJUSTMENT SCREW TO GET A CORRECT ANGLE OR CLEARANCE.

FIG. 3

FAST IDLE CAM INDEX SETTING

- POSITION THE FAST IDLE LEVER ON THE SECOND STEP OF THE FAST IDLE CAM AGAINST THE SHOULDER OF THE HIGH STEP (FIRST STEP).
- CHECK THE CHOKE PLATE ANGLE TO BE 35°, OR CHECK THE CLEARANCE BETWEEN LOWER EDGE OF CHOKE PLATE AND AIRHORN WALL TO BE 0.088 IN. BY USING A DRILL OF THE PROPER DIAMETER.
- IF ADJUSTMENT IS NEEDED, BEND THE FAST IDLE CAM INDEX TANG TO GET THE CORRECT ANGLE OR CLEARANCE.

FIG. 4

DE-CHOKE ADJUSTMENT (UNLOADER)

- HOLD THE THROTTLE PLATE FULLY OPEN, AND CLOSE THE CHOKE PLATE AS FAR AS POSSIBLE WITHOUT FORCING IT. CHECK THE CHOKE PLATE ANGLE TO BE 48°, OR CHECK THE CLEARANCE BETWEEN LOWER EDGE OF CHOKE PLATE AND AIRHORN WALL TO BE 0.206 IN. BY USING A DRILL OF THE PROPER DIAMETER.
- IF ADJUSTMENT IS NEEDED BEND THE DECHOKE TANG TO GET A CORRECT ANGLE OR CLEARANCE.

FIG. 5

FAST IDLE CAM BREAKER ADJUSTMENT (F.I.C.B.)

- FULLY RETRACT THE IDLE SPEED CONTROL MOTOR (ELECTRICALLY).
- SET THE THROTTLE ON THE HIGH CAM POSITION.
- APPLY AN EXTERNAL VACUUM SOURCE (16 IN.-HG. MINIMUM) TO F.I.C.B. DIAPHRAGM.
- THE FAST IDLE LEVER SHOULD BE ON THE THIRD STEP OF THE FAST IDLE CAM.
- IF ADJUSTMENT IS NEEDED, BEND F.I.C.B. LINK.

FIG. 6