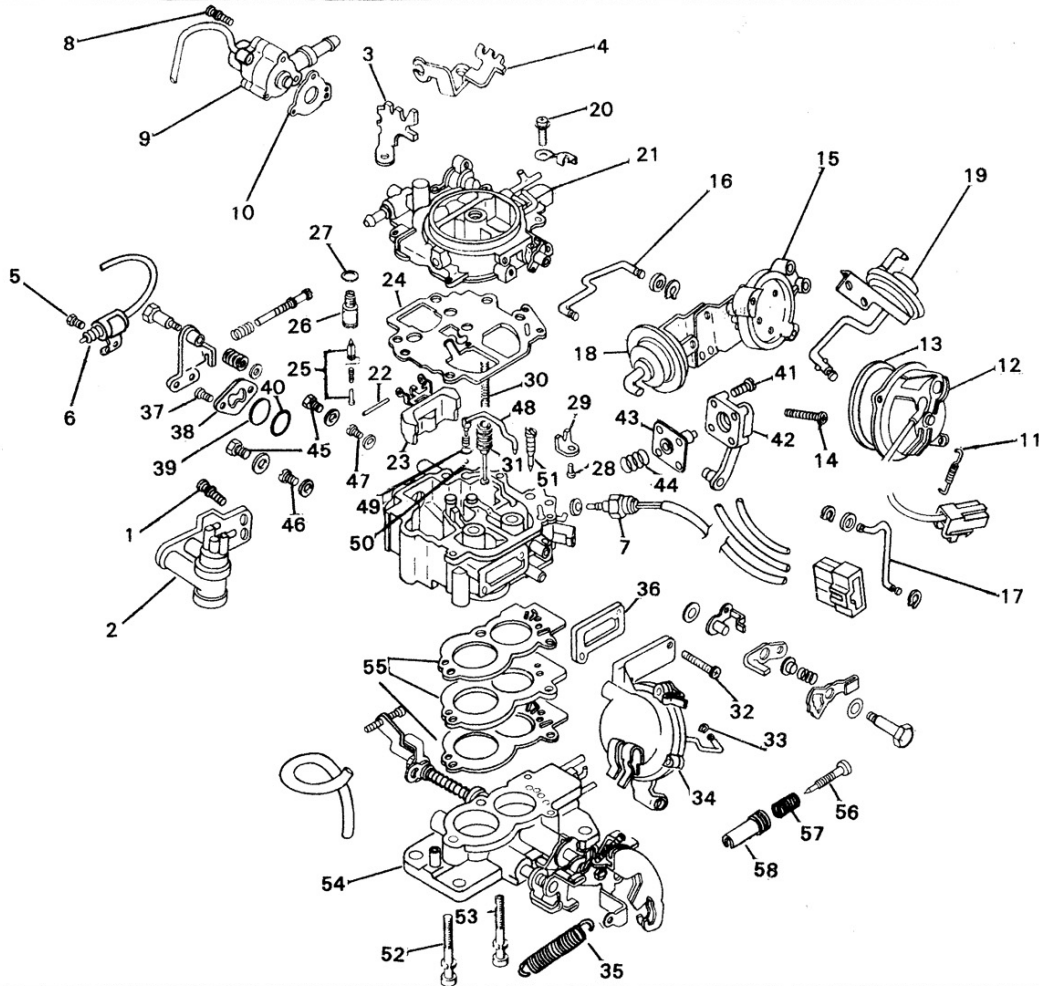


# INSTRUCTION SHEET

## OFF VEHICLE CARBURETOR SERVICE

### AISAN A-2 (FESTIVA 1.3L 1988-89)

#### GENERAL EXPLODED VIEW



#### NOMENCLATURE

REF. NO.	REF. NO.
1. SCREW & WASHER, AIR BLEED CONTROL VALVE, 2	31. PLUNGER, POWER VALVE
2. AIR BLEED CONTROL VALVE (ABCV) W/BACKET	32. SCREW & WASHER, VACUUM SECONDARY ASSY, 2
3. BRACKET #1, ABCV VACUUM HOSES	33. KEEPER, VACUUM SEC. ROD
4. BRACKET #2, ABCV VACUUM HOSES	34. VACUUM SECONDARY ASSY
5. SCREW & WASHER, IDLE SWITCH, 2	35. SPRING, THROTTLE RETURN
6. IDLE SWITCH	36. GASKET, VACUUM SECONDARY
7. EMISSION CONTROL SOLENOID	37. SCREW & WASHER, SIGHT GLASS
8. SCREW & WASHER, BOWL VENT SOLENOID, 3	38. BRACKET, SIGHT GLASS
9. BOWL VENT SOLENOID	39. SIGHT GLASS
10. GASKET, BOWL VENT SOLENOID	40. O-RING, SIGHT GLASS
11. SPRING, SECONDARY LOCK-OUT	41. SCREW & WASHER, ACCELERATOR PUMP, 4
12. CHOKE THERMOSTAT	42. COVER, ACCELERATOR PUMP
13. GASKET, CHOKE THERMOSTAT	43. DIAPHRAGM, ACCELERATOR PUMP
14. SCREW & WASHER, CHOKE HOUSING, 3	44. SPRING, ACCELERATOR PUMP
15. CHOKE HOUSING	45. PLUGS, BOWL DRAIN, 2
16. CHOKE ROD WITH KEEPER	46. MAIN JET, PRIMARY (BRASS COLOR)
17. CHOKE PULL-OFF ROD WITH KEEPER	47. MAIN JET, SECONDARY (STEEL COLOR)
18. CHOKE PULL-OFF WITH BRACKET	48. PUMP DISCHARGE NOZZLE
19. FAST IDLE CAM BREAKER (FICB)	49. SPRING, PUMP DISCHARGE
20. SCREW & WASHER, FLOAT BOWL, 5	50. CHECK BALL, PUMP DISCHARGE
21. FLOAT BOWL COVER	51. IDLE JET
22. PIN, FLOAT	52. SCREW & WASHER, THROTTLE BODY, 2
23. FLOAT	53. SCREW & WASHER, THROTTLE BODY (HOLLOW-CENTER)
24. GASKET, FLOAT BOWL	54. THROTTLE BODY ASSEMBLY
25. NEEDLE VALVE	55. GASKET, THROTTLE BODY (PHENOLIC BLOCK WITH SKINS)
26. SEAT, NEEDLE VALVE	56. SCREW, MIXTURE CONTROL
27. WASHER, NEEDLE VALVE	57. SPRING, MIXTURE CONTROL SCREW
28. SCREW, POWER VALVE PLUNGER	58. COVER, MIXTURE CONTROL SCREW
29. BRACKET, POWER VALVE PLUNGER	
30. SPRING, POWER VALVE PLUNGER	

#### DISASSEMBLY

USE THE EXPLODED VIEW AS A GUIDE. THE NUMERICAL SEQUENCE MAY GENERALLY BE FOLLOWED TO DISASSEMBLE UNIT FAR ENOUGH TO PERMIT CLEANING AND INSPECTION. NOTE SPECIAL INSTRUCTIONS.

#### SPECIAL DISASSEMBLY INSTRUCTIONS

BEFORE BEGINNING DISASSEMBLY OF CARBURETOR, CAREFULLY NOTE WIRING OF COMPONENTS, THEN LOCATE AND TAG ALL VACUUM HOSES. WIRES FOR THE EMISSION CONTROL SOLENOID MUST BE REMOVED FROM THE WIRING CONNECTOR-NOTE POSITION IN CONNECTOR OF EACH WIRE. MAIN JETS ARE NUMBERED AND DIFFERENT COLORS. RECORD LOCATION AND NUMBER ON DISASSEMBLY. CHOKE THERMOSTAT POP RIVETS MUST BE DRILLED OUT FOR REMOVAL. TURN MIXTURE ADJUSTMENT SCREW IN UNTIL LIGHTLY SEATED, AND RECORD NUMBER OF TURNS. DO NOT DISASSEMBLE THROTTLE SHAFT ASSEMBLY UNLESS REPLACEMENT IS NECESSARY.

#### CLEANING

CLEANING MUST BE DONE WITH UNIT DISASSEMBLED. DO NOT IMMERSE ANY COMPONENT CONTAINING PLASTIC OR ELECTRICAL PARTS IN ANY TYPE OF CLEANING SOLVENT. DAMAGE TO THE COMPONENTS WILL RESULT. CLEAN PASSAGES AND PARTS WITH A SPRAY CARBURETOR CLEANER. BE SURE TO REMOVE ALL CARBON DEPOSITS. WASH OFF WITH SUITABLE SOLVENT AND USE COMPRESSED AIR TO BLOW OUT ALL PASSAGES. DO NOT USE SOLVENT OR CLEANER ON ANY ELECTRICAL PARTS.

#### REASSEMBLY

REASSEMBLE IN REVERSE ORDER OF DISASSEMBLY. NOTE ALL SPECIAL REASSEMBLY INSTRUCTIONS.

#### SPECIAL REASSEMBLY INSTRUCTIONS

HOLLOW-CENTER THROTTLE BODY SCREW MOUNTS IN CENTER ONLY. MIXTURE ADJUSTMENT SCREW--TURN IN TO LIGHTLY SEAT, BACK OUT NUMBER OF TURNS RECORDED ON DISASSEMBLY. REINSTALL JETS IN SAME POSITION AS NOTED ON DISASSEMBLY. RELOCATE WIRING IN CONNECTOR AND BRACKETS AS NOTED REPOSITION VACUUM HOSES AS NOTED AND TAGGED.

## ADJUSTMENTS

