

# INSTRUCTION SHEET

## OFF VEHICLE CARBURETOR SERVICE

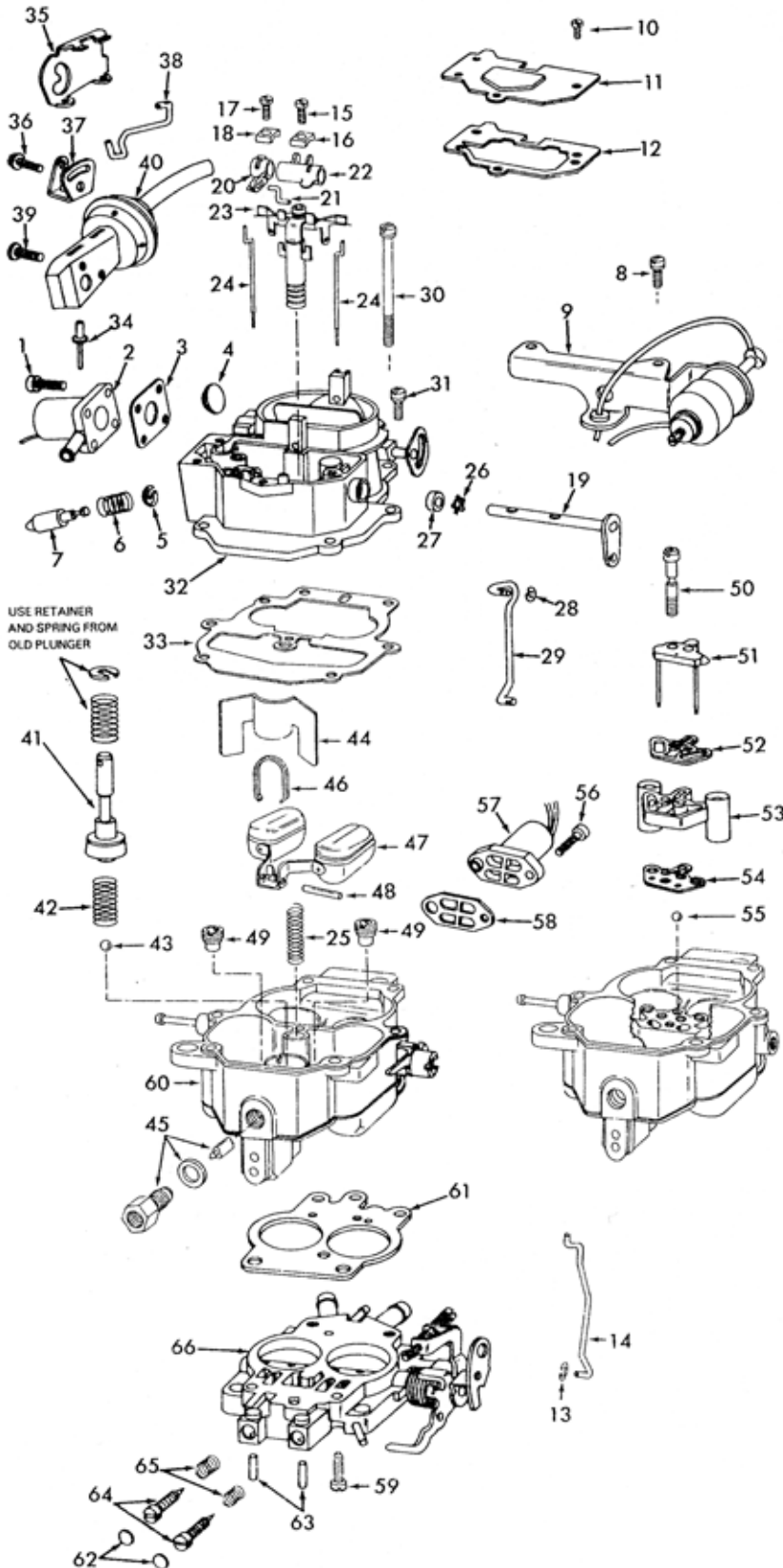
### CARTER - MODEL BBD

WITH DUTY CYCLE SOLENOID

50-612-2

**GENERAL EXPLODED VIEW**

THE GENERAL DESIGN AND PARTS SHOWN WILL VARY TO INDIVIDUAL UNITS COVERED ON THIS INSTRUCTION SHEET.



**DISASSEMBLY**

USE EXPLODED VIEW AS A GUIDE. THE NUMERICAL SEQUENCE MAY GENERALLY BE FOLLOWED TO DISASSEMBLE UNIT FAR ENOUGH TO PERMIT CLEANING AND INSPECTION. DRILL POP RIVET HEADS OFF TO REMOVE CHOKE PULL OFF LINK COVER. TO REMOVE IDLE ADJUSTING NEEDLE PLUGS & PINS, DRILL A SMALL HOLE IN THE CENTER OF EACH PLUG USING A SUITABLE PULLER REMOVE PLUGS. USING A SHARP PUNCH HELD AT AN ANGLE DRIVE ROLL PINS OUT FAR ENOUGH TO REMOVE IDLE ADJUSTING NEEDLES. BEFORE REMOVING TURN IDLE ADJUSTING NEEDLES IN COUNTING THE NUMBER OF TURNS IT TAKES TO LIGHTLY SEAT NEEDLE. RECORD FOR REASSEMBLY.

**NOMENCLATURE**

REF. NO.	REF. NO.
1. SCREW (4) - BOWL VENT SOLENOID	33. GASKET - BOWL COVER
2. BOWL VENT SOLENOID ASSEMBLY	34. RIVET (2) - COVER - (DRILL OUT)
3. GASKET - BOWL VENT SOLENOID	35. COVER - CHOKE PULLOFF LINK
4. VALVE - VENT	36. SCREW - LEVER
5. RETAINER - SPRING	37. LEVER - CHOKE PULLOFF LINK
6. SPRING - PLUNGER	38. LNK - CHOKE PULLOFF
7. PLUNGER - SOLENOID	39. SCREW (2) - CHOKE PULLOFF
8. SCREW & LOCKWASHER (2) - SOLENOID BRACKETS	40. CHOKE PULLOFF ASSEMBLY
9. SOLENOID & BRACKET ASSEMBLY	41. PUMP ASSEMBLY
10. SCREW (4) - COVER	42. SPRING - PUMP RETURN
11. COVER - DUST	43. BALL - PUMP CHECK (LARGE)
12. GASKET - DUST COVER	44. BAFFLE - FUEL BOWL
13. RETAINER - PUMP ROD	45. NEEDLE & SEAT ASSEMBLY
14. ROD - PUMP	46. RETAINER - FLOAT PIN
15. SCREW - METERING ROD ARM WASHER	47. FLOAT ASSEMBLY
16. WASHER - METERING ROD ARM	48. PIN - FLOAT
17. SCREW - PUMP ARM WASHER	49. JET (2) - MAIN
18. WASHER - PUMP ARM	50. SCREW (2) - VENTURI CLUSTER
19. SHAFT - PUMP	51. COVER - VENTURI
20. ARM - PUMP LINK	52. GASKET - VENTURI COVER
21. LNK - PUMP	53. CLUSTER ASSEMBLY - VENTURI
22. ARM - METERING ROD	54. GASKET - VENTURI CLUSTER
23. PISTON ASSEMBLY - VACUUM	55. BALL - PUMP CHECK (SMALL)
24. ROD (2) METERING	56. SCREW (2) - SOLENOID
25. SPRING - VACUUM PISTON	57. DUTY CYCLE SOLENOID ASSEMBLY
26. RETAINER - SHAFT SEAL	58. GASKET - SOLENOID
27. SEAL - PUMP SHAFT	59. SCREW & LOCKWASHER (2) - THROTTLE BODY
28. RETAINER - ROD	60. BOWL ASSEMBLY
29. ROD - FAST IDLE	61. GASKET - THROTTLE BODY
30. SCREW & LOCKWASHER (2) - BOWL COVER	62. PLUG - IDLE NEEDLE
31. SCREW & LOCKWASHER (2) - BOWL COVER	63. PIN - IDLE NEEDLE
32. BOWL COVER ASSEMBLY	64. NEEDLE (2) - IDLE ADJUSTING
	65. SPRING (2) - IDLE ADJUSTING NEEDLE
	66. THROTTLE BODY ASSEMBLY

**CLEANING**

CLEANING MUST BE DONE WITH CARBURETOR DISASSEMBLED. SOAK PARTS LONG ENOUGH TO SOFTEN AND REMOVE ALL FOREIGN MATERIAL. USE A CARBURETOR CLEANING SOLVENT. MAKE CERTAIN THE THROTTLE BORES ARE FREE OF ALL CARBON AND VARNISH DEPOSITS. RINSE OFF IN SUITABLE SOLVENT. BLOW OUT ALL PASSAGES IN CASTINGS WITH COMPRESSED AIR AND CHECK CAREFULLY TO INSURE THOROUGH CLEANING OF OBSCURE AREAS. CAUTION: DO NOT SOAK PLASTIC PARTS FOR A LONG PERIOD OF TIME. DO NOT SOAK PARTS CONTAINING DIAPHRAGMS, SOLENOIDS SUCH AS (2), (9), (40), (57) IN ANY TYPE OF CLEANING SOLVENTS.

**REASSEMBLY**

REASSEMBLE IN REVERSE ORDER OF DISASSEMBLY. NOTE SPECIAL INSTRUCTIONS AND FOLLOW NUMERICAL OUTLINE IN MAKING ADJUSTMENTS NECESSARY FOR CARBURETOR BEING SERVICED.

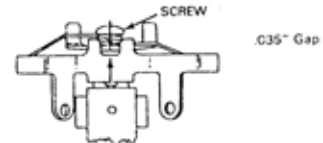
**SPECIAL INSTRUCTIONS**

IDLE ADJUSTING NEEDLES (64) - TURN IN UNTIL LIGHTLY SEATED THEN BACK OUT NUMBER OF TURNS RECORDED ON DISASSEMBLY. DO NOT INSTALL IDLE LIMITER PINS OR PLUGS AT THIS TIME)

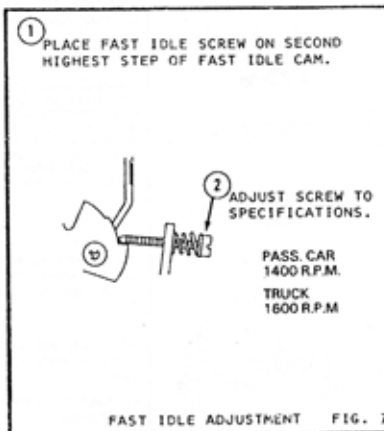
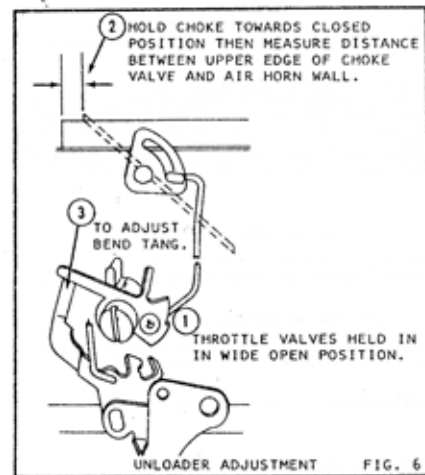
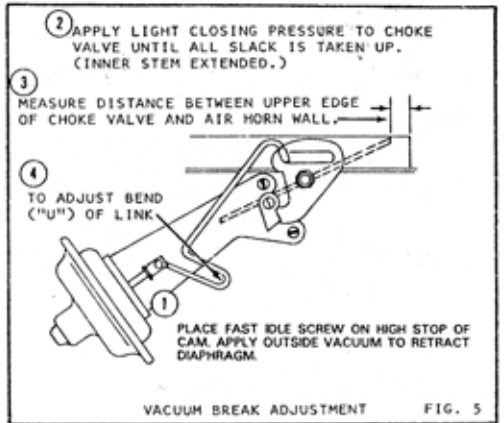
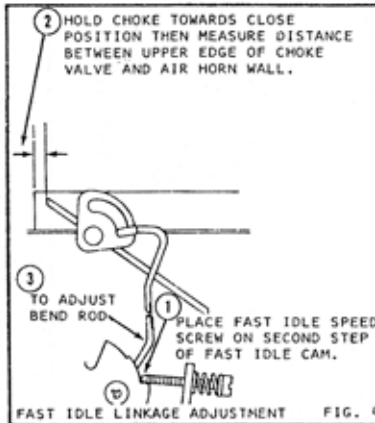
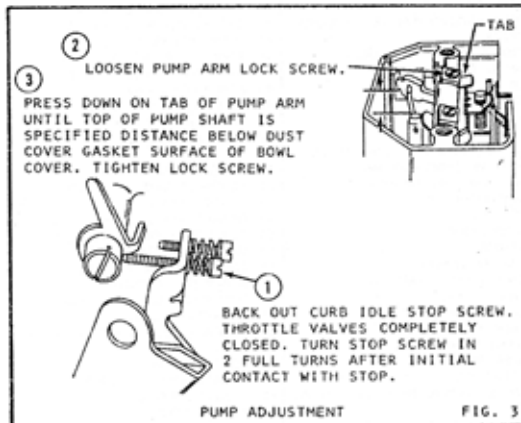
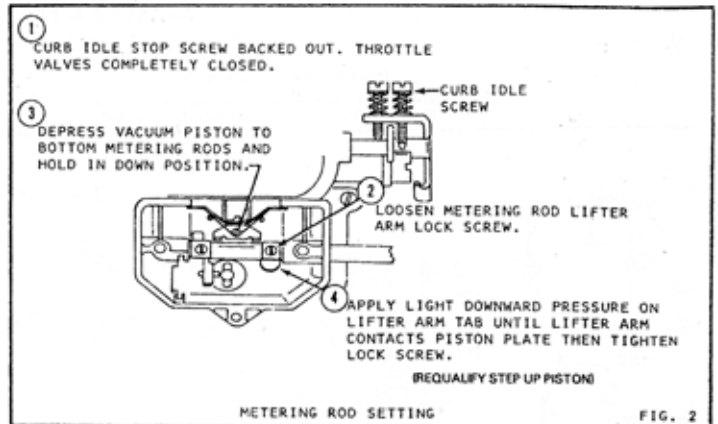
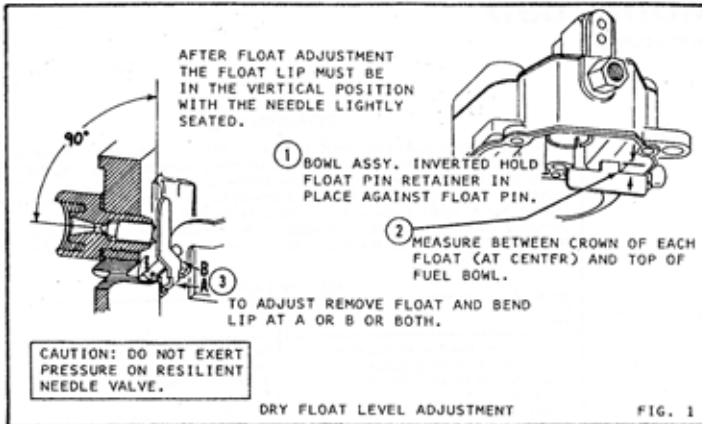
RETAINER FLOAT PIN (46) BE SURE RETAINER IS SEATING ON FLOAT PIN AND NOT HUNG UP IN GUIDE SLOTS.

**STEP UP PISTON QUALIFYING ADJUSTMENT**

BEFORE INSTALLING, ADJUST THE GAP (AS ILLUSTRATED) BY TURNING ALLEN HEAD SCREW ON TOP OF PISTON. (RECORD NUMBER OF TURNS AND DIRECTION TO OBTAIN THIS DIMENSION FOR THIS MUST BE RESET TO ITS ORIGINAL POSITION AFTER THE VACUUM STEP UP PISTON ADJUSTMENT HAS BEEN MADE.)



# ADJUSTMENTS



## CHRYSLER PRODUCTS ADJUSTMENT DATA TABLE

YEAR	CARB NO.	FLOAT LEVEL	PUMP ADJ.	FAST IDLE LINKAGE ADJ.	VACUUM BREAK	UNLOADER
1981-83	8291	1/4"	1/2"	.070"	.130"	.280"
1983	8381	1/4"	15/32"	5/64"	1/8"	9/32"
	8382	1/4"	15/32"	5/64"	1/8"	9/32"
1984	8385	1/4"	15/32"	5/64"	1/8"	9/32"
TRUCK						
1982	8348	1/4"	1/2"	.070"	.130"	.310"
1983-84	8358	1/4"	15/32"	.070"	.130"	.280"
	8359	1/4"	15/32"	.070"	.130"	.280"
	8374	1/4"	15/32"	.070"	.130"	.280"