

FUEL SYSTEM

SERVICE INSTRUCTION WORKSHEET

TO REPAIR

GF5185-1

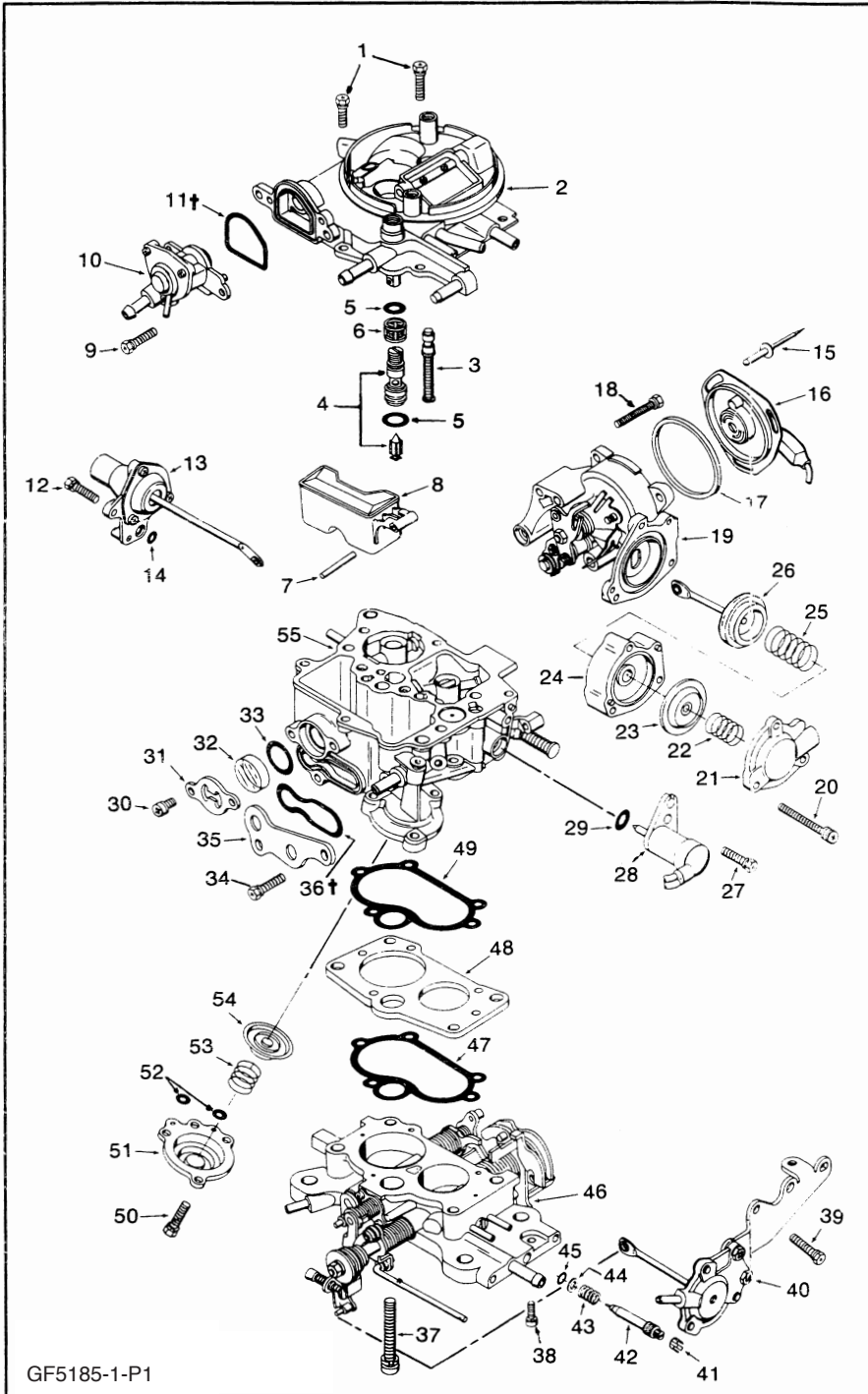
KEIHIN

2 BARREL CARBURETOR

1. Carefully read the text in the following pages to become familiar with the contents of this worksheet before performing carburetor overhaul.
2. The exploded view shown is typical of the model carburetor this kit will service. The view may differ slightly from the actual carburetor being overhauled.

3. Use the exploded view as a guide. The numerical sequence may generally be followed to disassemble the carburetor far enough to permit cleaning and inspection.
4. Parts List shown DOES NOT reflect the contents of the kit.

EXPLODED VIEW



PARTS LIST

1. Screw & L.W. Air Horn (6)
2. Air Horn Assembly
3. Power Piston Assembly
4. Needle & Seat Assembly
5. O-Ring, Needle & Seat
6. Filter, Needle & Seat
7. Hinge, Float Assembly
8. Float Assembly
9. Screw & L.W., Vent Valve
10. Power Piston Assembly
11. O-Ring Seal, Vent Valve †
12. Screw, Choke Opener (2)
13. Choke Opener, Diaphragm Assembly
14. O-Ring, Choke Opener
15. Pop Rivet, Choke Cover
16. Choke Cover Assembly
17. Gasket, Choke Cover
18. Screw & L.W., Choke Housing (3)
19. Choke Housing Assembly
20. Screw & L.W., Cover (3)
21. Cover, Fast Idle Unloader
22. Spring, Outer Diaphragm
23. Outer Diaphragm, Fast Idle Unloader
24. Housing, Fast Idle Unloader
25. Spring, Inner Diaphragm
26. Inner Diaphragm, Fast Idle Unloader
27. Screw & L.W., Cut-Off Solenoid
28. Cut-Off Solenoid Assembly
29. O-Ring, Cut-Off Solenoid
30. Screw & L.W., Window Plate (2)
31. Window Plate
32. Window, Fuel Level
33. O-Ring, Window Seal
34. Screw & L.W., Main Jet Cover
35. Main Jet Cover
36. O-Ring Seal, Cover †
37. Screw & L.W., Throttle Body (4)
38. Screw, Idle Control (Bottom of T.B.)
39. Screw, Idle Control (2)
40. Idle Control Diaphragm, Assembly
41. Cap, Mixture Adj. Screw
42. Mixture Adj. Screw
43. Spring
44. Washer
45. O-Ring
46. Throttle Body Assembly
47. O-Ring Seal, Spacer
48. Spacer
49. O-Ring Seal, Spacer
50. Screw & L.W., Pump Cover (3)
51. Cover, Pump Diaphragm
52. O-Ring (2)
53. Spring
54. Pump Diaphragm
55. Main Body Assembly

GF5185-1-P1

CLEANING

CLEANING MUST BE DONE WITH CARBURETOR DISASSEMBLED. COVER OPENING ON INTAKE MANIFOLD AFTER REMOVING CARBURETOR ASSEMBLY. **CAUTION:** DO NOT SOAK MAIN BODY ASSEMBLY (55) IN A CLEANING SOLVENT, THIS CAN DAMAGE PUMP BY-PASS VALVE AND PUMP DISCHARGE CHECK WHICH ARE NOT REMOVABLE.

USE SPRAY CLEANER AND A STIFF BRISTLE BRUSH TO REMOVE DIRT AND CARBON DEPOSITS. DO NOT USE ABRASIVES AND WIRES TO CLEAN PARTS AND PASSAGeways. AFTER CLEANING, WASH OFF IN SUITABLE SOLVENT AND CLEAR OUT PASSAGeways WITH COMPRESSED AIR.

CAUTION: DO NOT SOAK PARTS CONTAINING RUBBER, PLASTIC, LEATHER, AND ELECTRICAL PARTS IN ANY CLEANING SOLVENT.

DISASSEMBLY — ASSEMBLY HIGHLIGHTS

- TO REMOVE THE CHOKE COVER (16) USE A 5/32" DRILL BIT AND DRILL OUT THE RIVETS. SEE FIG. 4 FOR REASSEMBLY. **CAUTION:** COVER THE CARBURETOR TO PREVENT METAL SHAVINGS FROM ENTERING INTO THE CARBURETOR THROAT.
- THE IDLE CONTROL DIAPHRAGM ASSEMBLY (40) CAN BE REMOVED ONLY AFTER CARBURETOR HAS BEEN LIFTED OFF MANIFOLD. (HOLD-DOWN SCREW (38) IS LOCATED UNDER THROTTLE BODY ASSY. (40)).
- THE MIXTURE ADJUSTING SCREW (42) CAN BE REMOVED ONLY AFTER REMOVAL OF THE IDLE CONTROL DIAPHRAGM ASSEMBLY. **IMPORTANT** TURN MIXTURE ADJUSTING SCREW CLOCKWISE. COUNT AND RECORD NUMBER OF TURNS. USE IT TO OBTAIN INITIAL SETTING UPON REASSEMBLY.
- IF JETS AND VENTURIS ARE BEING REMOVED, MAKE SURE ALL SIZES ARE RECORDED AND MARKED ACCORDING TO LOCATIONS. THIS IS NEEDED FOR PROPER REASSEMBLY.
- DO NOT INSTALL MIXTURE ADJUSTING SCREW CAP (41) AFTER REASSEMBLY. THIS WILL ALLOW FINAL ON-CAR ADJUSTMENT. SEE SERVICE MANUAL FOR PROPER PROCEDURE.
- AFTER ADJUSTING FUEL LEVEL (FIG. 1), PAINT TOP OF ADJUSTING SCREW TO PREVENT IT FROM TURNING.
- WHEN CHECKING CHOKE VALVE, NOTE THAT ABOVE 82°F, CHOKE WILL NOT CLOSE COMPLETELY, BUT SHOULD STILL CLOSE TO LESS THAN 3mm.

NOTE

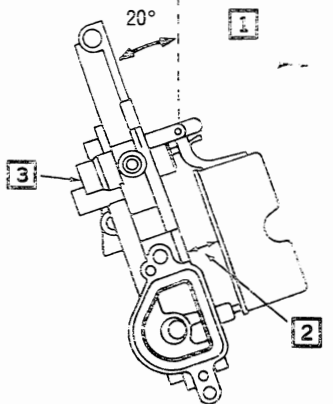
† O-RING SEALS (11 & 36) ARE NOT FORMED UNTIL INSTALLED ON CARBURETOR.

ADJUSTMENTS

FIG. 1

FLOAT LEVEL ADJUSTMENT

1. TILT AIR HORN ASSEMBLY APPROXIMATELY 20° OFF VERTICAL PLANE. ALLOW FLOAT TO REST LIGHTLY ON SPRING LOADED NEEDLE. **CAUTION:** DO NOT COMPRESS SPRING LOADED NEEDLE OR FORCE IT INTO SEAT.
2. SET FLOAT PARALLEL WITH AIR HORN ASSEMBLY.
3. TO ADJUST, TURN NEEDLE SEAT IN OR OUT.



FLOAT LEVEL ADJUSTMENT

1. WITH ENGINE AT OPERATING TEMPERATURE AND CAR ON LEVEL GROUND, REV ENGINE TO 3000 R.P.M. SEVERAL TIMES, THEN ALLOW TO IDLE.
2. WHEN THE FUEL LEVEL STABILIZES, CHECK THAT FUEL IS CENTERED IN INSPECTION WINDOW.
3. TO ADJUST, TURN ADJUSTING SCREW AS SHOWN. **NOTE:** DO NOT TURN MORE THAN 1/8 TURN EVERY 15 SECONDS.

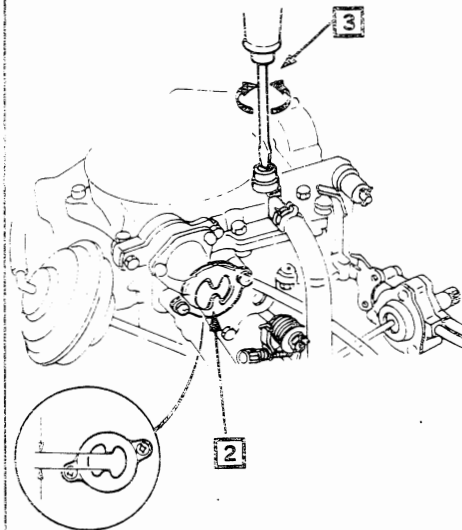
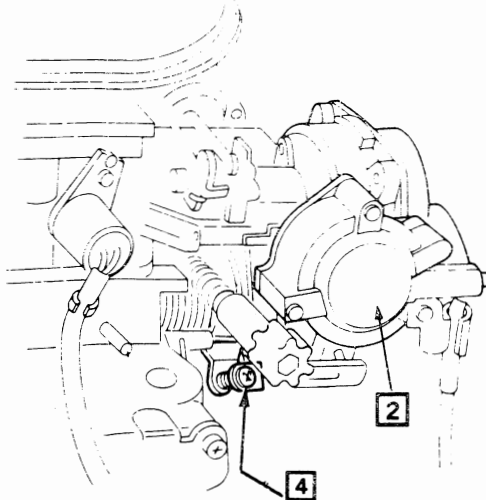


FIG. 3

FAST IDLE ADJUSTMENT (HOT ENGINE)

1. WITH ENGINE IN OPERATING TEMPERATURE, STOP ENGINE AND CONNECT A TACHOMETER.
2. DISCONNECT AND PLUG THE INSIDE VACUUM HOSE OF FAST IDLE UNLOADER.
3. TO ENGAGE FAST IDLE CAM, OPEN AND CLOSE THROTTLE VALVE FULLY WHILE HOLDING CHOKE VALVE CLOSED.
4. WITH ENGINE RUNNING, FAST IDLE SHOULD BE AS SPECIFIED. TO SET, TURN ADJUSTING SCREW.



ADJUSTMENTS (Cont'd)

FIG. 4

AUTO. CHOKE ADJUSTMENT

1. INSTALL CHOKE THERMOSTAT TO CHOKE HOUSING. MAKE SURE BI-METAL SPRING IS PROPERLY SEATED.
2. ALIGN INDEX MARKS. SECURE WITH NEW POP RIVETS.

NOTE: REFER TO THIS ADJUSTMENT AFTER CHOKE OPENER ADJUSTMENT (FIG. 5) IF BEING PERFORMED.

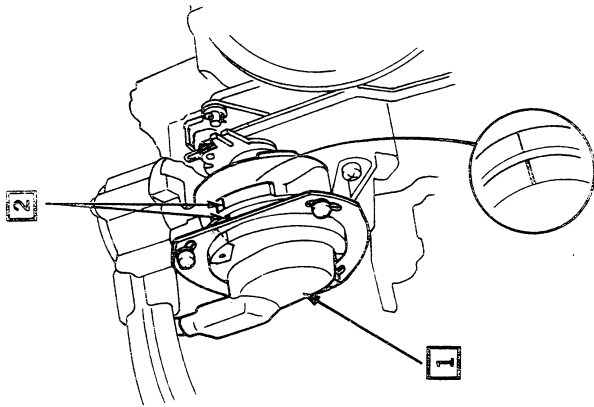


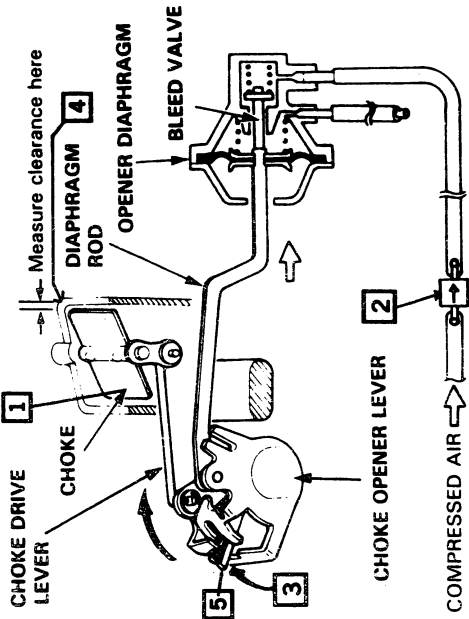
FIG. 5

CHOKE OPENER ADJ.

NOTE: THIS ADJUSTMENT IS NECESSARY ONLY IF THE LINKAGE HAS BEEN BENT, CHOKE OPENER HAS BEEN REPLACED, OR CAR HAS POOR COLD STARTING.

STAGE ONE:

1. HOLD CHOKE VALVE CLOSED. OPEN AND CLOSE THROTTLE TO ENGAGE CHOKE AND FAST IDLE LEVER. KEEP THIS SETTING THROUGH THE FOLLOWING STEPS.
2. ATTACH A CHECK VALVE TO CHOKE OPENER HOSE, THEN PRESSURIZE CHOKE OPENER WITH AIR (15-85 PSI) TO HOLD BLEED VALVE CLOSED.
3. PUSH CHOKE OPENER LEVER IN DIRECTION OF ARROW UNTIL IT STOPS (THE OPENER ROD SEATS AGAINST BLEED VALVE). THEN PULL CHOKE DRIVE LEVER DOWN AGAINST CHOKE OPENER LEVER.
4. MEASURE CLEARANCE BETWEEN UPPER EDGE OF CHOKE VALVE AND AIR HORN WALL. SEE SPEC. CHART.
5. TO ADJUST, BEND TAB A.



NOTE: FOR CHECK VALVE, USE HONDA P/N 36145-PAG-004 OR USE IGNITION CHECK VALVE FROM 80 ACCORD OR PRELUDE (EXC. CALIF. WITH A/T).

FIG. 5 (Cont'd)

CHOKE OPENER ADJ. (Cont'd)

STAGE TWO:

6. REMOVE CHECK VALVE AND RECONNECT CHOKE OPENER HOSE.
7. PUSH BOTH LEVERS TOGETHER IN DIRECTION OF ARROW UNTIL TAB "B" TOUCHES STOP. MEASURE AS IN STEP 4.
8. TO ADJUST, BEND TAB "B".

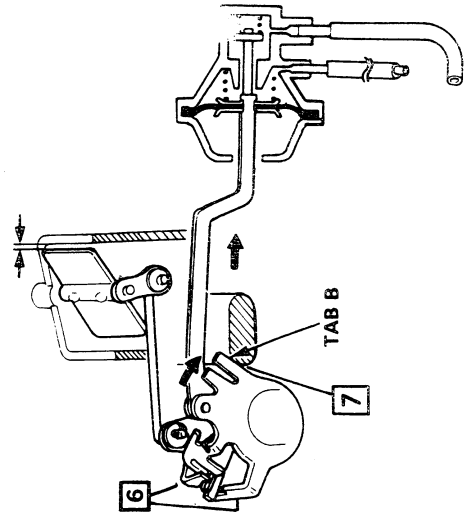
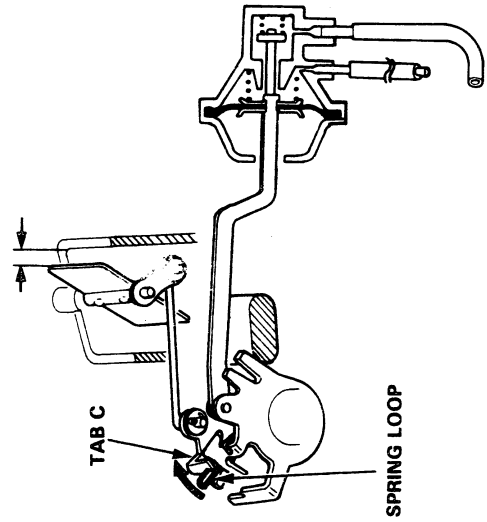


FIG. 5 (Cont'd)

CHOKE OPENER ADJ. (Cont'd)

STAGE THREE:

9. WHILE HOLDING CHOKE OPENER LEVER IN PLACE (AGAINST STOP), RELEASE CHOKE DRIVE LEVER. TAB "C" SHOULD TOUCH SPRING LOOP. MEASURE AS IN STEP 4.
10. TO ADJUST, BEND TAB "C".



SPECIFICATION CHART

Year	MODEL	Float Level	Fast Idle Adj. ±500 RPM	Choke Opener Adjustment			Idle Mixture Adjustment	Auto. Choke Adjustment
				Stg. 1 ±.07	Stg. 2 ±.09	Stg. 3 ±.2		

HONDA ACCORD — SPECIFICATION I.D.-A

1989-88	2000cc Eng.	1	2500	1.46	3.54	5.25	2	Index
	Exc. Calif.—A.T.	1	2500	1.54	3.28	5.25	2	Index
	—M.T.	1	2500	1.46	3.28	5.25	2	Index
	Calif.—A.T.	1	2500	1.54	3.28	5.25	2	Index
1987-86	1800cc Eng.	1	2500	1.46	3.54	5.25	2	Index
	Exc. Calif.—A.T.	1	2500	1.54	3.28	5.25	2	Index
	—M.T.	1	2500	1.46	3.28	5.25	2	Index
	Calif.—A.T.	1	2500	1.54	3.28	5.25	2	Index

HONDA CIVIC — SPECIFICATION I.D.-B

1987	1500cc Eng.	1	3000	1.10	1.93	5.25	2	Index
	Wagon—A.T.	1	3000	1.27	1.80	5.25	2	Index
1987-86	1300cc Eng.	1	3000	1.02	1.93	3.87	2	Index
	1500cc Eng.	1	3000	1.10 ³	1.93	5.26	2	Index
	CRX Std.—A.T.	1	3000	0.94	1.93	5.26	2	Index
1985-84	CRX HF—Fed.	1	3000	1.19	2.0	3.94	2	Index
	1300cc Eng.	1	3000	1.44	2.0	5.28	2	Index
	CRX HF							
	1500cc Eng.							
	CRX Std.							

FOOTNOTES:

¹ See Fig. 1 & 2.

² Refer to service manual.

³ M/T set 1.27mm.

ABBREVIATIONS:

A/T Automatic Transmission
M/T Manual Transmission
Hi-Alt. High Altitude
Std. Standard Model
Fed. Federal (49 States)
Exc. Except